

Sensex settles above 16,100

Tracking weak cues from the Asian markets, the Sensex opened on a cautious note with a negative gap of 12.58 points at 16,111.09. However, it pared all the losses in the first hour of trades on the back of fresh buying in the index heavyweights. Thereafter, in the early afternoon deals the market shed its gains and slipped into the negative territory due to profit-booking and the weak opening of the European markets and US index future. In the late noon, the measure once again recovered from the day's low as European markets reversed an early slide to touch the intraday high of 16,215.74. However, during the last hour of trade, the bourse pared some of its gains due to selling pressure in the Realty and Auto stocks. The Sensex closed the choppy session with a marginal gain of 59.88 points or 0.37%, at 16,183.55.

The Nifty closed the day with a marginal gain of 9 points or 0.19%, at 4,814.25.

Negative Market Breadth

Market breadth was negative with an advance-decline ratio of 0.84:1 on the BSE. Out of the 2,882 stocks traded, 1,280 advanced, 1,530 declined, and 72 remained unchanged.

Oil & Gas surges, Realty plunges

Oil & Gas led the gainers list as it rose by 2.36%. Banking and Pharma increased by 0.59% and 0.35% respectively. Metals moved up 0.24% after LMEX, a gauge of six metals traded on the London Metal Exchange jumped 2.43%. On the other hand, Realty declined by 1.65% on profit-booking. Auto and Capital Goods slipped 0.88% and 0.80%, respectively. Among other losers, Consumer Durables, FMCG, IT and Power lost 0.64%, 0.56%, 0.34% and 0.32%, respectively.

US and European markets advance

- US stocks closed higher for a fourth straight day, as industrial and technology companies gained from a weak dollar.
- European markets closed in the green, with stronger crude prices on the back of a falling dollar boosting energy stocks.

Index	Latest	1D Chg	YTD
Sensex (09-Sep-09)	16,183.55	0.37%	7.15%
Nifty (09-Sep-09)	4,814.25	0.19%	4.96%
Nasdaq (09-Sep-09)	1,669.23	0.87%	37.77%
DJIA (09-Sep-09)	9,547.22	0.53%	8.78%
S&P 500 (09-Sep-09)	1,033.37	0.78%	14.41%
FTSE (09-Sep-09)	5,004.30	1.15%	12.86%
CAC 40 (09-Sep-09)	3,707.69	1.28%	15.22%
Nikkei 225 (09-Sep-09)	10,312.14	(0.78)%	16.40%
Hang Seng (09-Sep-09)	20,851.04	(1.04)%	44.92%

SENSEX		
Top Gainers	Close	1DGain
RIL	2,169.35	4.54%
Hindalco	119.60	4.14%
JaiPrakash Associates	237.95	1.88%
HDFC	2,528.10	1.32%
HDFC Bank	1,474.30	1.29%
Top Losers	Close	1DLoss
DLF	420.40	(3.51)%
Bharti Airtel	409.85	(3.36)%
Hero Honda	1,627.85	(2.44)%
Wipro	542.25	(1.75)%
Reliance Communication	299.45	(1.67)%

NIFTY		
Top Gainers	Close	1DGain
Hindalco	120.20	4.57%
RIL	2,168.45	4.47%
PNB	701.05	1.56%
Cairn	270.20	1.45%
HDFC	2,535.20	1.37%
Top Losers	Close	1DLoss
BPCL	562.50	(4.40)%
DLF	420.40	(3.48)%
Bharti Airtel	409.35	(3.46)%
Jindal Steel	3,455.90	(3.29)%
Hero Honda	1,627.85	(2.46)%
Market Stats	BSE	NSE
Advance-Dcline ratio	0.84	0.65
Volume (in'000)	499,100	967,344

SENSEX



NIFTY



Corporate Announcements:



- ING Vysya Bank** said it has raised a total of Rs. 4.15 bn through private placement of shares with potential buyers and via preferential allotment. The bank has issued 92,70,455 shares at Rs. 248.10 a share totaling to Rs. 2.30 bn to qualified buyers. (BS)
- BPCL** plans to spend around Rs. 30 bn in the current fiscal to fund drilling operations in some exploration blocks, upgradation of refineries and for building a product pipeline. (BS)
- Television Eighteen** said its board has decided to issue shares on rights basis. The company would issue shares at Rs. 84 a share. (BS)

Economic and Political Headlines:

- The government is considering a proposal for granting Rs. 6.00 bn for 15 more state-of-the-art Integrated Textile Parks to be set up in public-private partnership at a total cost of Rs. 20.00 bn. (BS)
- The Reserve Bank said bank finance to developers of infrastructure facilities in SEZs would be taken as infrastructure lending, against its 2006 ruling that classified these as commercial real estate (CRE) exposures. (ET)

International News Headlines:

- Mortgage applications in the US jumped the most since March last week, as lower interest rates sparked a surge in refinancing and purchases also rose. The Mortgage Bankers Association's index of applications to buy a home or refinance a loan increased 17% to 648.3 in the week ended Sept. 4 from 554.1 a week earlier. The group's refinancing gauge climbed 23% while the index of purchases was up 9.5% to the highest since January. (Bloomberg)
- UK consumer confidence rose to the highest level in more than a year in August as signs mounted that the economy is emerging from the worst recession in a generation, Nationwide Building Society said. An index of sentiment rose to 63 in August, the highest since May 2008, from 61 in July. (Bloomberg)

Most Active Stocks by Value (in Cr)

BSE	Close	%Chg	Value	Volume
RIL	2,169.35	4.54%	388	1,812,955
DLF	420.40	(3.51)%	186	4,372,763
IFCI	59.45	3.12%	179	29,974,879
Unitech	112.25	(1.01)%	158	14,007,864
HDIL	321.00	2.41%	150	4,717,037

NSE	Close	%Chg	Value	Volume
RIL	2,168.45	4.47%	1,284	6,009,262
DLF	420.40	(3.48)%	672	15,791,175
Unitech	112.15	(1.15)%	575	50,868,544
IFCI	59.40	3.04%	557	93,103,604
HDIL	321.00	2.38%	443	13,967,771

Most Active Calls by Contract Value (in Cr)

	Value	Price	% Chg
Nifty 4900 Call Sep-09	3,162	74.95	1.90%
Nifty 4800 Call Sep-09	2,958	122.00	1.58%

Most Active Puts by Contract Value (in Cr)

Nifty 4700 Put Sep-09	3,021	63.95	(12.34)%
Nifty 4800 Put Sep-09	2,799	101.40	(9.71)%

Most Active Future Contracts by Value (in Cr)

Nifty Sep-09	9,675	4,821.00	0.26%
RELIANCE Sep-09	1,915	2,166.00	4.38%

Top Contracts by Change in Open Interest

Contract	Change in OI	Price	% Chg
IFCI Sep-09	5,973,040	59.80	3.28%
POWERGRID Sep-09	1,430,275	106.10	(1.94)%

FII open positions in Derivatives (NSE)

	Idx Fut	Ind Opt	Stk Fut	Stk Opt
No of Contracts	491,252	902,313	562,563	67,771
Amt (in cr.)	11,235	21,729	18,593	2,378

FII (Rs. Cr.)*

	9-Sep-09	MTD	YTD
Equity inflows	3,085	17,801	378,331
Equity outflows	2,892	17,352	372,342
Net	193	449	5,989

DII (Rs. Cr.)*

	9-Sep-09	MTD	YTD
Equity inflows	1,619	10,117	205,438
Equity outflows	1,381	8,704	181,009
Net	239	1,413	24,430

* FII & DII data is provisional in nature

Commodities

	Latest	1DChg
Brent (USD/bbl) (Sep 09, 2009)	70.06	0.78%
Gold (USD/oz) (Sep 09, 2009)	999.50	(0.12)%
Cu (USD/lb) (Sep 09, 2009)	2.91	(0.97)%

X-rate

	9-Sep-09	1DChg	1MChg
USD/Rs.	48.5	(0.37)%	1.27%
GBP/Rs.	80.2	0.67%	0.01%
EUR/Rs.	70.3	0.51%	2.33%
JPY/Rs.	52.4	(0.23)%	4.48%

ADR/GDR (USD)

	9-Sep-09	1DChg
Dr Reddy's	16.29	0.00%
HDFC Bank	103.52	1.37%
ICICI Bank	33.93	3.57%
Infosys	46.85	1.78%
Wipro	16.49	1.79%
Tata Communications	20.36	1.19%
Tata Motors	13.00	0.08%
MTNL	3.82	0.26%
Patni	17.53	(0.45)%
Sterlite	15.41	1.05%

Macro Economic Indicators

GDP Growth*	6.70%
Inflation (week ended Aug 22, 2009)	(0.21)%
Index of Industrial Production (IIP) growth (June)	7.80%
CRR (Sep 09, 2009)	5.00%
SLR (Sep 09, 2009)	24.00%

* As per CSO Estimate for 2008-09

BSE Bulk Deals

COMPANY	CLIENT	TRAN	QTY	TRADED PRICE
ALKALI	SANDEEP S SABOO	SELL	71,300	263.64
BELLA STE AL	JMP SECURITIES PVT LTD	BUY	1,321,966	3.92
BELLA STE AL	JMP SECURITIES PVT LTD	SELL	2,204,666	4.03
BILCARE LT	BAJAJ ALLIANZ LIFE INSURANCE CO.LTD	BUY	497,590	389.00
BILCARE LT	RAJESH OMKARNATH MALPANI	SELL	250,000	389.00
BILCARE LT	SANJAY OMKARNATH MALPANI	SELL	250,000	389.03
C G IMPEX	DAXABEN VASANTKUMAR SHAH	SELL	70,150	7.50
C G IMPEX	NILESH DOSHI	BUY	108,101	7.52
C G IMPEX	SHAH RAJESH C.	BUY	50,000	7.80
FILAT FASH	CHANDRA SHEKHAR SUNIL BHATT	BUY	51,000	80.48
FILAT FASH	SB LIQUOR DISTRIBUTORS PRIVAT	BUY	60,000	80.00
FILMCIT MEDI	WELLNESS COMMUNICATION (P) LTD	SELL	1,700,000	1.16
GOOD LUCK ST	KINOFOLK INDUSTRIES LTD.	BUY	102,055	41.26
HIND TIN WOR	SUNIL BHAGWATLAL DALAL	BUY	131,197	99.71
HIRAN ORGOCH	SANJAY SHANTILAL ANCHALIYA	BUY	100,000	56.74
HIRAN ORGOCH	SUCHHANDAA CHATTERJEE	SELL	174,437	55.07
INDTRADECO L	PLEASENT TEXTILES LIMITED	SELL	4,500,000	0.41
INTELLVIS SO	DHEERAJ KUMAR	BUY	50,000	20.00
INTELLVIS SO	GOLDMAN SACHS INVESTMENTS MAURITIUS I LTD	SELL	84,923	20.00
KAY POW PAP	BAMPSL SECURITIES LTD.	BUY	353,574	7.87
KAY POW PAP	BAMPSL SECURITIES LTD.	SELL	396,512	7.82
KAY POW PAP	KAILASH CHAND GUPTA	SELL	71,000	8.01
KAY POW PAP	NARENDER GUPTA	SELL	134,529	7.74
KAY POW PAP	OMPARKASH GUPTA	BUY	56,648	7.95
KAY POW PAP	SUMAN GUPTA	BUY	70,000	7.63
KOHINORFOODS	TEMPTATION FOODS LTD	SELL	226,919	57.28
LANCOR HOLDS	VISWANATH SHEKHAR RAJAMANI	BUY	200,000	70.73
LIPPI SYSTEM	DINESHKUMAR RAMKUMAR GUPTA	SELL	297,850	5.30
LIPPI SYSTEM	NEHA NANDLAL AGRAWAL	BUY	297,850	5.30
LOTUS EYE	SUBODHSAGAR SHARES & SERVICES PRIVATE LIMITED	BUY	104,022	37.93
NIRAJ CEMENT	AYODHYAPATI INVESTMENT PVT LTD	BUY	71,000	86.67
NIRAJ CEMENT	AYODHYAPATI INVESTMENT PVT LTD	SELL	52,896	85.00
ODYSSEY CORP	BHROSEMAND COMMODITIES PVT. LTD.	SELL	147,141	22.55
ODYSSEY CORP	DYNAMIC EQUITIES PRIVATE LIMITED	BUY	145,000	22.55
PUNJAB WOOLC	DHARAM ARORA	SELL	250,000	5.50
PUNJAB WOOLC	KB SHAH	BUY	85,000	5.50
REPRO INDIA	SETU SECURITIES PVT LTD	BUY	59,409	115.36
SAMPADA CHEM	THE PREMIER COMMERCIAL COPVT LTD	SELL	108,000	28.55
TEMPT.FOODS	FAIRDEAL INFIN SERVICES PVT. LTD.	BUY	180,827	44.99
TEMPT.FOODS	TAIB BANK A/C TSML	SELL	189,889	44.97

MORNING BRIEF *India*

Daily Market Update

September 10, 2009

UTTAM GALVA	JMP SECURITIES PVT LTD	BUY	1,260,656	137.48
UTTAM GALVA	JMP SECURITIES PVT LTD	SELL	1,079,076	137.42
VEER ENERGY	AANGI SHARES & SERVICES PVT. LTD.	SELL	297,880	24.92

Note: Bulk Deals over and above 50,000 shares are only considered

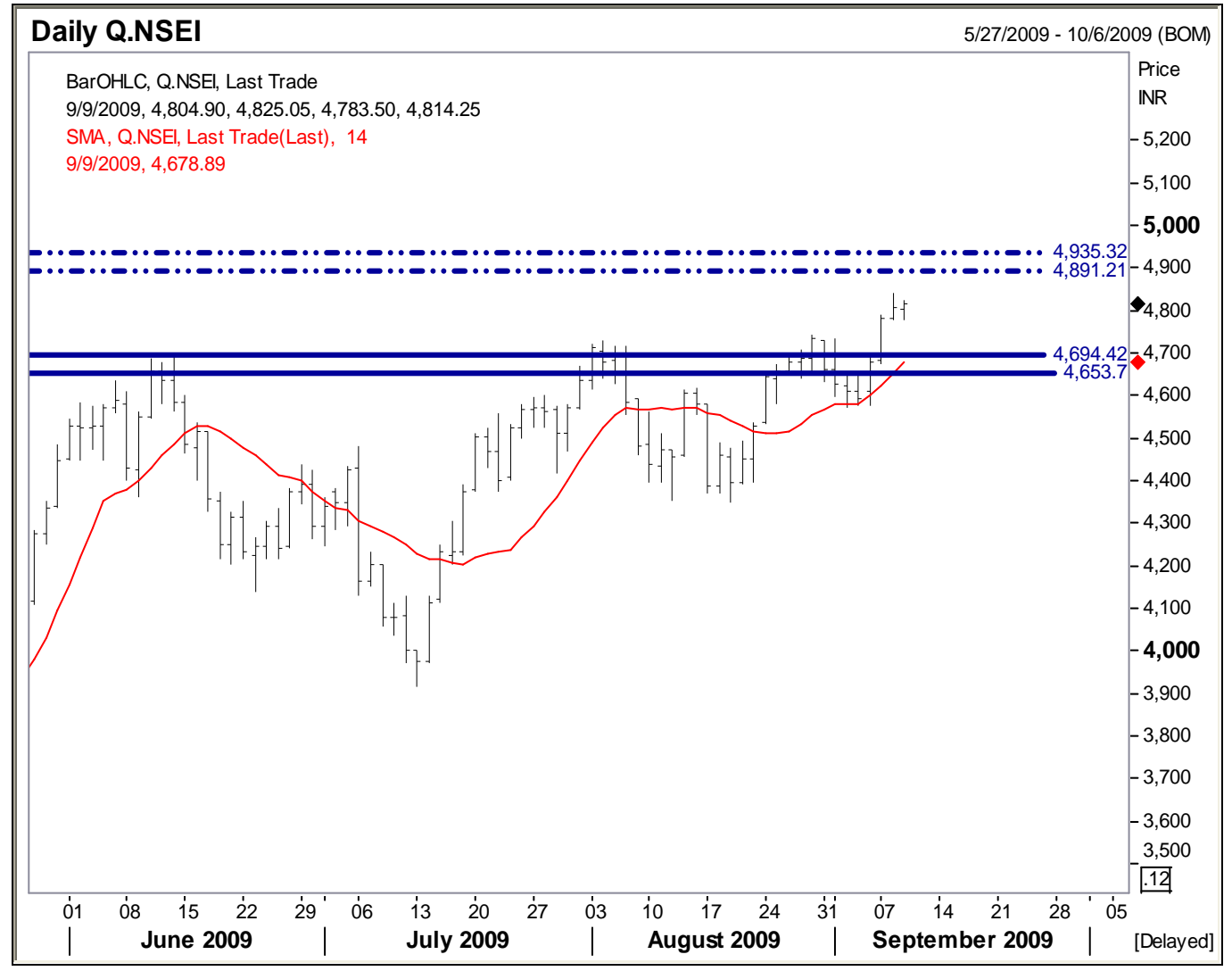
NSE Bulk Deals

COMPANY	CLIENT	TRAN	QTY	TRADED PRICE
JINDALSAW	PHILLIPS HAGER AND NORTH OVERSEAS EQUITY PENSION TRUST	BUY	514,668	618.87
KOHINOOR	TEMPTATION FOODS LTD	SELL	220,281	57.37
PRAENG	MACQUARIE BANK LIMITED	BUY	200,000	35.05
PRAENG	SWISS FINANCE CORPORATION (MAURITIUS) LIMITED	SELL	200,000	35.05
UTTAMSTL	JMP SECURITIES PVT LTD	BUY	931,472	138.14
UTTAMSTL	JMP SECURITIES PVT LTD	SELL	800,992	137.19

Note: Bulk Deals over and above 50,000 shares are only considered

Technical Analysis

NIFTY: 4,814.25



MORNING BRIEF *India*

Daily Market Update

September 10, 2009

Name	LTP	Support 1	Support 2	Resistance 1	Resistance 2
NIFTY	4,814.25	4,694.42	4,653.70	4,891.21	4,935.32
ABAN Offshore Ltd	1,528.55	1,495.87	1,442.33	1,572.98	1,622.23
ABB Ltd India	737.20	720.23	707.01	757.00	776.88
ACC Limited	796.55	778.35	769.80	818.95	829.54
Aditya Birla Nuvo	1,009.70	967.45	942.00	1,037.00	1,046.00
Ambuja Cements	99.55	97.89	95.04	102.74	105.12
Asian Paints Ltd	1,360.00	1,324.70	1,291.00	1,406.30	1,459.00
Axis Bank	915.35	891.00	874.21	934.55	954.00
Bajaj Auto Ltd	1,235.05	1,187.23	1,161.22	1,284.56	1,323.79
Bank Of Baroda	451.70	428.00	416.85	462.48	477.12
BF Utilities Ltd	909.50	887.53	870.00	940.22	966.89
Bharat Electronics	1,403.00	1,382.44	1,349.76	1,447.60	1,484.00
Bharat Forge Co	217.20	213.50	209.00	226.30	233.00
Bharat Heavy Electricals	2,237.25	2,187.65	2,157.89	2,280.54	2,316.89
Bharat Petroleum	562.50	542.00	521.34	589.79	599.63
Bharti Airtel Ltd	409.35	403.56	392.33	426.58	438.99
Bosch Ltd	3,972.60	3,895.64	3,800.00	4,087.00	4,187.55
Cairn India	270.20	263.59	255.74	276.12	281.99
Canara Bank	287.60	281.45	273.65	299.88	306.45
Cipla Ltd	267.40	260.99	255.26	272.87	280.59
Container Corporation	1,145.10	1,120.00	1,097.56	1,178.52	1,239.25
Crompton Greaves	312.55	304.78	291.80	321.65	332.45
Dabur India Ltd	128.90	124.88	121.45	135.00	138.45
DLF Ltd	420.40	406.78	398.55	446.89	457.00
Dr Reddy's Labs	793.05	774.93	758.06	808.00	826.78
Essar Oil Ltd	154.50	147.22	144.69	160.00	165.80
Financial Technologies	1,427.25	1,382.56	1,349.00	1,479.86	1,513.56
Gail India Ltd	357.05	350.12	344.98	366.80	378.00
Glaxosmithkline	1,439.50	1,407.00	1,383.25	1,480.00	1,499.00
Glenmark Pharma	225.10	218.80	215.00	232.90	235.05
GMR Infrastructure	139.65	135.42	131.00	143.89	148.90
Grasim Inds Ltd	2,728.55	2,670.56	2,621.24	2,800.00	2,851.00
HCL Technologies Ltd	308.60	298.70	291.56	316.70	323.85
HDFC	2,535.20	2,489.00	2,396.60	2,578.00	2,622.00
HDFC Bank Ltd	1,475.45	1,440.23	1,400.98	1,509.78	1,550.23
Hero Honda Motors	1,627.85	1,589.05	1,526.31	1,700.00	1,729.58
Hindalco	120.20	114.56	109.85	124.53	129.50
Hindustan Lever	265.45	258.69	249.77	273.00	281.00
Hindustan Zinc	806.20	785.63	760.53	834.50	854.00
HPCL	405.30	396.80	387.96	416.59	429.63
ICICI Bank Ltd	792.90	769.00	748.00	806.00	817.00
Idea Cellular	79.60	77.89	75.23	82.95	85.25
Indian Hotels Co	66.10	64.20	61.90	69.10	71.01
Indian Oil Corporation	631.40	602.35	585.63	666.00	682.32
Indian Overseas Bank	89.30	85.12	83.69	91.00	94.20
Industrial Dev Bk Ind	106.35	103.01	100.00	108.40	112.60
Infosys Technologies Ltd	2,189.70	2,135.61	2,058.32	2,240.06	2,332.03
Infrastructure Development	144.10	140.45	137.60	150.00	154.78
ITC Ltd	227.00	222.00	216.95	234.77	241.20
Jaiprakash Associates	237.95	232.07	223.67	243.42	253.42

MORNING BRIEF *India*

Daily Market Update

September 10, 2009

Name	LTP	Support 1	Support 2	Resistance 1	Resistance 2
Jet Airways India	262.85	254.00	248.50	269.88	277.84
Jindal Steel & Power	3,455.90	3,370.54	3,248.55	3,535.39	3,680.53
JSW Steel Ltd	731.05	712.99	687.19	747.86	778.57
Kotak Mahindra Bank	718.60	703.69	684.52	734.00	748.90
Larsen & Toubro	1,602.05	1,560.00	1,496.00	1,638.96	1,672.56
MMTC Ltd	28,749.00	28,038.90	27,024.06	29,410.23	30,617.69
MTNL	93.30	90.52	88.63	96.57	97.60
Mahindra & Mahindra	836.95	818.22	800.00	867.12	891.25
Mangalore Refineries	87.60	84.50	81.77	91.23	94.21
Maruti Udyog Ltd	1,513.05	1,480.00	1,448.00	1,574.55	1,602.00
Mundra Port and SEZ Ltd	540.15	528.10	513.56	565.00	578.00
National Aluminum Co	348.50	339.89	327.59	356.52	371.15
Nati Mineral Development	370.25	361.52	347.12	379.69	386.00
Nestle India Ltd	2,230.00	2,172.30	2,100.36	2,286.36	2,346.99
Neyveli Lignite	137.60	134.00	129.12	141.51	145.80
NTPC Limited	205.20	200.95	195.36	211.60	216.80
Oil & Natural Gas Corp	1,180.10	1,140.25	1,118.11	1,222.30	1,248.97
Oracle Financial Services	1,776.15	1,734.49	1,708.01	1,826.00	1,882.77
Patni Computers	405.75	396.55	384.77	424.00	438.75
Power Finance Corporation	224.25	219.70	214.51	234.00	239.00
Power Grid Corporation	105.45	102.67	100.23	108.56	112.41
Punjab Natl Bank	701.05	683.12	670.25	721.36	741.59
Ranbaxy Labs Ltd	320.00	309.42	302.15	331.74	339.85
Reliance Capital	916.30	895.00	877.89	936.52	950.55
Reliance Communication	299.10	291.88	284.59	310.23	322.56
Reliance Infrastructure	1,192.35	1,157.77	1,103.59	1,233.62	1,275.33
Reliance Industries	2,168.45	2,105.56	1,985.00	2,221.00	2,250.23
Reliance Petroleum	132.75	128.90	122.63	138.56	141.00
Sesa Goa Ltd	226.30	219.99	210.60	232.00	237.85
Siemens India	507.30	493.00	477.66	523.86	537.12
Sobha Developers	242.10	237.00	234.36	252.36	263.14
State Bank of India	1,894.75	1,840.00	1,790.84	1,940.55	2,001.22
Steel Authority of India Ltd	169.05	164.52	159.65	172.00	176.00
Sterlite Industries	747.45	729.00	702.60	764.00	796.00
Sun Pharmaceutical	1,220.40	1,190.20	1,147.00	1,250.36	1,300.00
Sun TV Network	288.80	282.10	272.45	296.00	307.50
Suzlon Energy Ltd	99.95	97.15	93.62	102.50	105.50
Tata Communications	484.95	470.89	455.00	496.00	520.00
Tata Consultancy	560.45	544.60	526.32	574.00	598.63
Tata Motors Ltd	557.05	543.20	521.00	570.00	593.21
Tata Power Co	1,295.70	1,260.00	1,217.44	1,326.00	1,380.95
Tata Steel Limit	460.65	449.27	433.01	471.24	490.59
Tech Mahindra Ltd	948.75	925.00	890.24	971.56	1,013.77
Union Bank of India	223.00	217.49	209.62	228.13	237.50
Unitech Limited	112.15	109.00	104.63	115.63	119.23
United Breweries	152.50	147.85	142.77	156.98	164.77
United Spirits	900.30	876.00	850.00	921.00	959.63
Videocon Industries	238.95	233.00	225.00	245.00	254.50
Wipro Limited	542.55	528.74	511.00	555.00	577.96
Zee Entertainment	213.60	208.52	201.00	219.00	228.41

Disclaimer:

This report is not for public distribution and is only for private circulation and use. The Report should not be reproduced or redistributed to any other person or person(s) in any form. No action is solicited on the basis of the contents of this report.

This material is for the general information of the authorized recipient, and we are not soliciting any action based upon it. This report is not to be considered as an offer to sell or the solicitation of an offer to buy any stock or derivative in any jurisdiction where such an offer or solicitation would be illegal. It is for the general information of clients of Indiabulls Securities Limited. It does not constitute a personal recommendation or take into account the particular investment objectives, financial situations, or needs of individual clients. You are advised to independently evaluate the investments and strategies discussed herein and also seek the advice of your financial adviser.

Past performance is not a guide for future performance. The value of, and income from investments may vary because of changes in the macro and micro economic conditions. Past performance is not necessarily a guide to future performance.

This report is based upon information that we consider reliable, but we do not represent that it is accurate or complete, and it should not be relied upon as such. Any opinions expressed here in reflect judgments at this date and are subject to change without notice. Indiabulls Securities Limited (ISL) and any/all of its group companies or directors or employees reserves its right to suspend the publication of this Report and are not under any obligation to tell you when opinions or information in this report change. In addition, ISL has no obligation to continue to publish reports on all the stocks currently under its coverage or to notify you in the event it terminates its coverage. Neither Indiabulls Securities Limited nor any of its affiliates, associates, directors or employees shall in any way be responsible for any loss or damage that may arise to any person from any error in the information contained in this report.

The analyst for this report certifies that all of the views expressed in this report accurately reflect his or her personal views about the subject stock and no part of his or her compensation was, is or will be, directly or indirectly related to specific recommendations or views expressed in this report. No part of this material may be duplicated in any form and/or redistributed without Indiabulls Securities Limited prior written consent.

The information given herein should be treated as only factor, while making investment decision. The report does not provide individually tailor-made investment advice. Indiabulls Securities Limited recommends that investors independently evaluate particular investments and strategies, and encourages investors to seek the advice of a financial adviser. Indiabulls Securities Limited shall not be responsible for any transaction conducted based on the information given in this report, which is in violation of rules and regulations of National Stock Exchange or Bombay Stock Exchange.