



**Punter's Call**

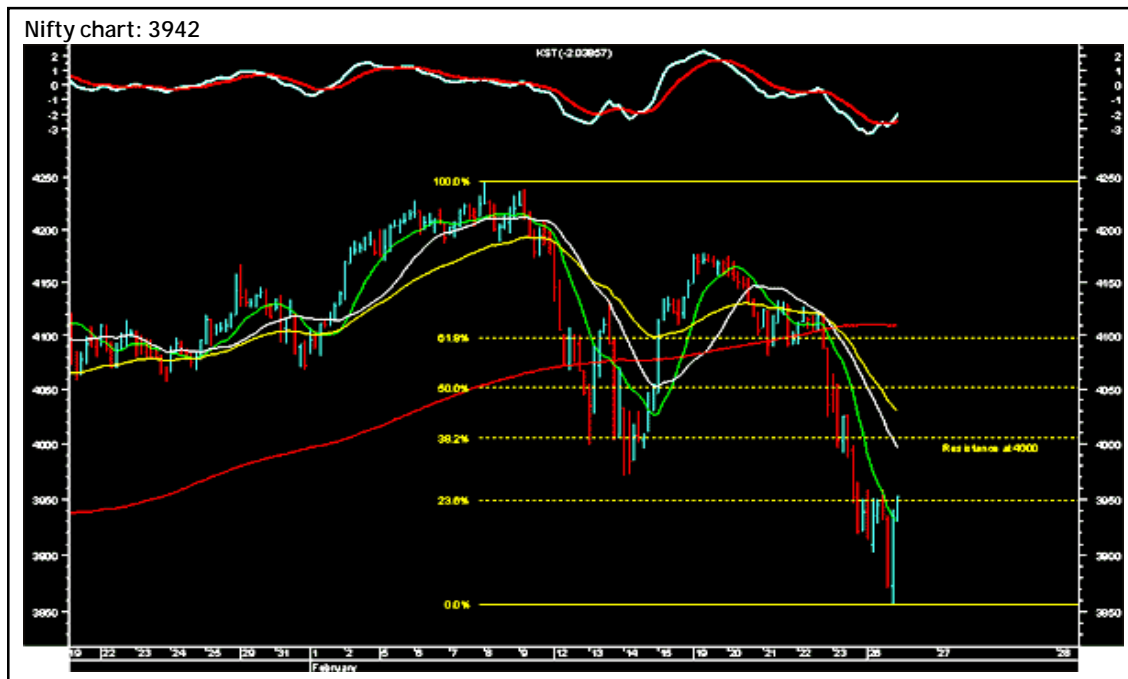
### A bounce on the cards

The Nifty achieved its short-term target of 3880 and took support near 3850. The index witnessed a bounce from around 3850 and ended the trading session marginally in positive territory. Intra-day the Nifty witnessed huge volatility and in the last hour of the session there was substantial buying in front-line stock, which lifted the Nifty. In the short term the Nifty could see a bounce to 4050, which is the 61.8% retracement level of the fall from the high of 4180 to the low it made today at 3856. Intra-day the index faces a resistance in the 3980-4010 range. On surpassing the 3980-4010 range the next resistance is at the 40-DEMA at 4050. As long as the Nifty is below the 40-DEMA at 4050, the near term bias remains down.

Wipro has a support at Rs600 and it faces a resistance at Rs630. TCS could bounce from its support at Rs1,260 and it faces a resistance around Rs1,325. Tata Steel looks strong and should test Rs485. The stock has a support at Rs465.

**Market Breadth**

	BSE	NSE
Advances	1,229	618
Declines	1,315	716
Unchanged	50	17



## Short Term Trend

	Target	Trend	Reversal	Support/Resistance
Sensex	13300	↓	Up above 14050	13500 / 13800
Nifty	3850	↓	Up above 4050	3880 / 4000

## Medium Term Trend

	Target	Trend	Reversal	Support/Resistance
Sensex	12800	↓	Up above 14300	13300 / 14000
Nifty	3700	↓	Up above 4130	3880 / 4050

### Icon guide

 Up	 Down	 Downswing matures	 Upswing matures
--	--	---	---

Smart Charts > Open Long Calls

Date	Recommendation	Stop Loss/ Reversal (Intra-day)	Stop Loss/ Reversal (Closing)	Buy Price	Closing Price	Potential % P/L at CMP	Targets
05-02-07	Reliance Capital	-	632.4	675.0	670.6	-1%	784
24-01-07	SAIL	-	92.4	103.0	113.8	10%	134

Smart Charts > Open Short Calls

Date	Recommendation	Stop Loss/ Reversal (Intra-day)	Stop Loss/ Reversal (Closing)	Sell Price	Closing Price	Potential % P/L at CMP	Targets
23-02-07	Satyam	-	475.0	454.0	461.5	-2%	410
29-01-07	Dr Reddy's	-	821.0	755.0	691.5	9%	600

## Trendy Levels

Sensex		Nifty	
Support	Resistance	Support	Resistance
13568	13780	3900	3950
13400	13900	3880	3980
13300	14000	3850	4000
<b>20DSMA</b>	<b>40DEMA</b>	<b>20DSMA</b>	<b>40DEMA</b>
14245	14032	4115	4050
BSE Sensex: 13650		Nifty: 3942	

## Day Trader's HIT List

For February 27, 2007

Scrip Name	Support Levels		Close (Rs)	Resistance Levels		Action
	S1	S2		R2	R1	
NIFTY Futures	3900	3940	3969	3980	4000	Buy above R2.
ACC	920	930	946	962	975	Buy above R2.
Century	555	570	579	588	600	Buy above R2.
Hindalco	138	142	145	148	156	Go long above R2. Go short below S2.
Infosys	2180	2200	2217	2250	2275	Sell on rise to R2.
ICICI Bank	880	888	906	920	935	Buy above R2.
India Cements	180	185	190	195	204	Buy above R2.
IVRCL Infra	340	348	353	362	370	Buy above R2.
M & M	835	848	852	861	872	Go long above R2. Go short below S2.
Maruti	850	870	874	885	899	Go long above R2. Go short below S2.
ONGC	800	810	835	855	875	Sell on rise to R2.
Rcom	410	420	426	435	455	Buy above R2.
Reliance	1380	1400	1407	1415	1440	Go long above R2. Go short below S2.
Reliance Capital	645	650	671	685	695	Sell on rise to R2.
Ranbaxy	335	345	351	355	365	Go long above R2. Go short below S2.
Satyam	430	450	461	470	475	Sell on rise to R2.
SBI	1040	1060	1089	1100	1125	Go long above R2. Go short below S2.
Sterlite	490	500	508	520	525	Buy above R2.
Tata Steel	460	465	470	474	485	Buy above R2.
Tata Motors	800	825	840	848	865	Go long above R2. Go short below S2.
VSNL	380	390	395	400	415	Go long above R2. Go short below S2.
Wipro	600	610	614	618	632	Go long above R2. Go short below S2.

\*Note: Closing price of Nifty futures is last traded price of Nifty futures on NSE

For Private Circulation only

[Home](#)

### Disclaimer

"This document has been prepared by Sharekhan Ltd.(SHAREKHAN) This Document is subject to changes without prior notice and is intended only for the person or entity to which it is addressed to and may contain confidential and/or privileged material and is not for any type of circulation. Any review, retransmission, or any other use is prohibited. Kindly note that this document does not constitute an offer or solicitation for the purchase or sale of any financial instrument or as an official confirmation of any transaction.

Though disseminated to all the customers simultaneously, not all customers may receive this report at the same time. SHAREKHAN will not treat recipients as customers by virtue of their receiving this report.

The information contained herein is from publicly available data or other sources believed to be reliable. While we would endeavour to update the information herein on reasonable basis, SHAREKHAN, its subsidiaries and associated companies, their directors and employees ("SHAREKHAN and affiliates") are under no obligation to update or keep the information current. Also, there may be regulatory, compliance, or other reasons that may prevent SHAREKHAN and affiliates from doing so. We do not represent that information contained herein is accurate or complete and it should not be relied upon as such. This document is prepared for assistance only and is not intended to be and must not alone be taken as the basis for an investment decision. The user assumes the entire risk of any use made of this information. Each recipient of this document should make such investigations as it deems necessary to arrive at an independent evaluation of an investment in the securities of companies referred to in this document (including the merits and risks involved), and should consult its own advisors to determine the merits and risks of such an investment. The investment discussed or views expressed may not be suitable for all investors. We do not undertake to advise you as to any change of our views. Affiliates of Sharekhan may have issued other reports that are inconsistent with and reach different conclusion from the information presented in this report.

This report is not directed or intended for distribution to, or use by, any person or entity who is a citizen or resident of or located in any locality, state, country or other jurisdiction, where such distribution, publication, availability or use would be contrary to law, regulation or which would subject SHAREKHAN and affiliates to any registration or licensing requirement within such jurisdiction. The securities described herein may or may not be eligible for sale in all jurisdictions or to certain category of investors. Persons in whose possession this document may come are required to inform themselves of and to observe such restriction.

SHAREKHAN & affiliates may have used the information set forth herein before publication and may have positions in, may from time to time purchase or sell or may be materially interested in any of the securities mentioned or related securities. SHAREKHAN may from time to time solicit from, or perform investment banking, or other services for, any company mentioned herein. Without limiting any of the foregoing, in no event shall SHAREKHAN, any of its affiliates or any third party involved in, or related to, computing or compiling the information have any liability for any damages of any kind. Any comments or statements made herein are those of the analyst and do not necessarily reflect those of SHAREKHAN."