

June 6, 2006

FOR PRIVATE CIRCULATION

**Shrikant Chouhan**  
 shrikant.chouhan@kotak.com  
 +9122 66341439

## Index view

**The markets on 5 June:** The market failed to sustain the higher opening.

**LOOKING AHEAD:** The market failed to sustain the higher opening and closed at a day's low. Also, the market has missed the opportunity of filling the bearish gap between 10680 and 10720. This might trigger further bearish sentiment. According to the formation of the daily chart, it seems the market might challenge the immediate bottom of 10000/2925 in early hours of trading. However, continuation of the bearish trend is possible only if the market trades/sustains below the level of 10000/2925.

### Index range

**NIFTY : 3017**

Range : 2935-3090

Resistance : 3030-3055-3090-3130

Support : 2980-2950-2935-2825

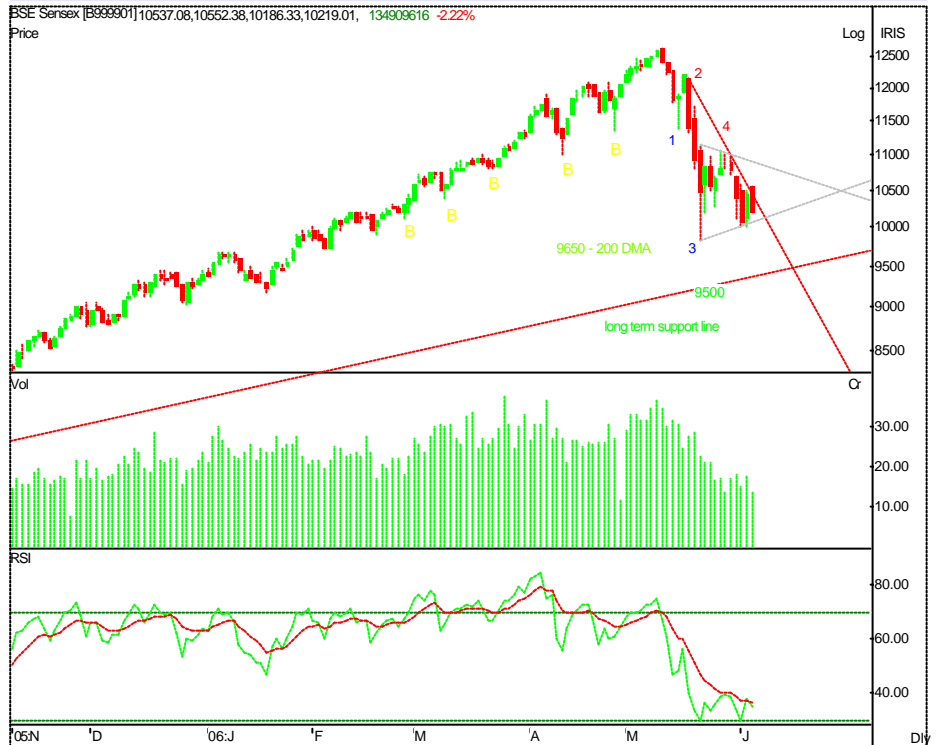
**Sensex : 10220**

Range : 10000-10350

Resistance : 10275-10350-10490-10550

Support : 10100-10000-9940-9820

### BSE daily chart



### Trading calls

Stock	Recommendation
-------	----------------

NIL

These trading calls are based on cash but clients can trade in futures also with the support of the above mentioned prices.

## Trading Tool

Stock	Extreme	Probable	Achievable	Closings	Achievable	Probable	Extreme	Final Stop Loss
NIFTY (June-F)	2918	2932	2941	2959	2977	2986	3000	2863
RELIANCE	890	901	914	925	936	949	960	925
SAIL	77.0	78.7	79.5	81.05	82.6	83.4	85.1	75
TISCO	475	481	488	494	500	507	513	480
HDFC	1153	1169	1184	1199	1214	1229	1245	1096
ONGC	1045	1058	1073	1086	1099	1114	1127	1051
HERO HONDA	726	735	746	755	764	775	784	700.55
BAJAJ AUTO	2575	2607	2644	2677	2710	2747	2779	2559
M&M	586	593	601	609	617	625	632	560
MARUTI	708	717	727	736	745	755	764	670
TELCO	756	765	776	786	796	807	816	731
REL CAPITAL	476	485	489	495	501	514	526	473
SRF	187	190	194	198	200	206	212	197
TITAN	35	35	35	36	36	37	39	626
VSNL	365	369	374	379	384	389	393	360
BOB	213	218	221	224	227	230	235	220
OBC	173	177	180	182	184	187	191	180
SBIN	773	793	804	814	824	835	855	807.5
PNB	355	371	379	390	401	410	425	384
HCL TECH	474	483	487	493	499	503	512	485
INFOSYS	2716	2768	2789	2824	2859	2880	2932	2810
SATYAM	617	629	634	642	650	655	667	618
TCS	1700	1733	1746	1768	1790	1803	1836	1685
WIPRO	441	449	452	458	464	467	475	436
ACC	715	728	734	743	752	758	771	735
GACL	84.6	85.7	87.9	90.2	92.5	93.6	95.8	89.9
GRASIM	1669	1700	1714	1735	1756	1770	1801	1650
BHEL	1886	1922	1937	1961	1985	2000	2036	1895
REL	441	450	453	459	465	468	477	440
NTPC	105.1	107.5	108.5	110.65	112.8	113.8	116.2	108
TATAPOWER	451	460	463	469	475	478	487	461

- Achievable** = which is achievable if the stock trades above or below the closing price. (Trade as per the trend of the market)
- Probable** = which is probably achievable if the stock trades above or below the closing price.  
(If the prevailing trend of the market is in force)
- Extreme** = Here traders can go short (higher side) or long (lower side) with minimal stop loss.

### Research Team

Name	Sector	Tel No	E-mail id
Jay Prakash Sinha	Economy, Banking, FMCG, Agro-Industry	+91 22 6634 1207	jay.sinha@kotak.com
Dipen Shah	IT, Media, Telecom	+91 22 6634 1376	dipen.shah@kotak.com
Sanjeev Zarbade	Capital Goods, Engineering	+91 22 6634 1258	sanjeev.zarbade@kotak.com
Teena Virmani	Construction, Mid Cap, Power	+91 22 6634 1237	teena.virmani@kotak.com
Awadhesh Garg	Pharmaceuticals	+91 22 6634 1406	awadhesh.garg@kotak.com
Apurva Doshi	Logistics, Textiles, Mid Cap	+91 22 6634 1366	doshi.apurva@kotak.com
Nikhil Ranka	Capital Goods, Engineering, Paper	+91 22 6634 1440	nikhil.ranka@kotak.com
Saurabh Gurnurkar	IT, Media, Telecom	+91 22 6634 1273	saurabh.gurnurkar@kotak.com
Vinay Goenka	Auto, Auto Ancillary, Sugar	+91 22 6634 1291	vinay.goenka@kotak.com
Shrikant Chouhan	Technical analyst	+91 22 6634 1439	shrikant.chouhan@kotak.com
Kaustav Ray	Editor	+91 22 6634 1223	kaustav.ray@kotak.com
K. Kathirvelu	Production	+91 22 6634 1557	k.kathirvelu@kotak.com

### Disclaimer

This document is not for public distribution and has been furnished to you solely for your information and must not be reproduced or redistributed to any other person. Persons into whose possession this document may come are required to observe these restrictions.

This material is for the personal information of the authorized recipient, and we are not soliciting any action based upon it. This report is not to be construed as an offer to sell or the solicitation of an offer to buy any security in any jurisdiction where such an offer or solicitation would be illegal. It is for the general information of clients of Kotak Securities Ltd. It does not constitute a personal recommendation or take into account the particular investment objectives, financial situations, or needs of individual clients.

We have reviewed the report, and in so far as it includes current or historical information, it is believed to be reliable though its accuracy or completeness cannot be guaranteed. Neither Kotak Securities Limited, nor any person connected with it, accepts any liability arising from the use of this document. The recipients of this material should rely on their own investigations and take their own professional advice. Price and value of the investments referred to in this material may go up or down. Past performance is not a guide for future performance. Certain transactions -including those involving futures, options and other derivatives as well as non-investment grade securities - involve substantial risk and are not suitable for all investors. Reports based on technical analysis centers on studying charts of a stock's price movement and trading volume, as opposed to focusing on a company's fundamentals and as such, may not match with a report on a company's fundamentals.

Opinions expressed are our current opinions as of the date appearing on this material only. While we endeavor to update on a reasonable basis the information discussed in this material, there may be regulatory, compliance, or other reasons that prevent us from doing so. Prospective investors and others are cautioned that any forward-looking statements are not predictions and may be subject to change without notice. Our proprietary trading and investment businesses may make investment decisions that are inconsistent with the recommendations expressed herein.

Kotak Securities Limited has two independent equity research groups: Institutional Equities and Private Client Group. This report has been prepared by the Private Client Group. The views and opinions expressed in this document may or may not match or may be contrary with the views, estimates, rating, target price of the Institutional Equities Research Group of Kotak Securities Limited.

We and our affiliates, officers, directors, and employees world wide may: (a) from time to time, have long or short positions in, and buy or sell the securities thereof, of company (ies) mentioned herein or (b) be engaged in any other transaction involving such securities and earn brokerage or other compensation or act as a market maker in the financial instruments of the company (ies) discussed herein or act as advisor or lender / borrower to such company (ies) or have other potential conflict of interest with respect to any recommendation and related information and opinions.

The analyst for this report certifies that all of the views expressed in this report accurately reflect his or her personal views about the subject company or companies and its or their securities, and no part of his or her compensation was, is or will be, directly or indirectly related to specific recommendations or views expressed in this report.

No part of this material may be duplicated in any form and/or redistributed without Kotak Securities' prior written consent.