

Sensex moves past 15,700

Snapping a three-day rally, the Sensex opened with a negative gap of 54.84 points at 15,573.91, tracking feeble global cues. In addition, the weak Asian markets propelled the index to slip below the 15,500 mark amidst a bout of volatility. The measure extended its losses to touch the intraday low of 15,423.39 due to profit-booking in the Banking, FMCG, and Realty sectors. However, the gauge recovered sharply in the late morning deals and drifted into the positive terrain after Finance Minister Pranab Mukherjee said that economic reforms are needed to steer the Indian economy to a 9% growth path. Fresh buying in the index pivots led by the Consumer Durables, Health Care, and Capital Goods stocks helped the measure to sustain the momentum in the afternoon trades. Thereafter, the index traded in a narrow range with positive bias and touched the intraday high of 15,735.32 towards the closing bell. The Sensex finally closed the session with a gain of 59.72 points, or 0.38%, at 15,688.47.

After a strong rebound from the day's low, the Nifty ended the session with an upswing of 16.55 points, or 0.36%, at 4,659.35.

Positive market breadth

Market breadth was strong with an advance-decline ratio of 1.59:1 on the BSE. Of the 2,816 stocks traded, 1,681 stocks advanced, 1,060 stocks declined, and 75 stocks remained unchanged.

IT advances, Banking declines

IT was the top gainer on the BSE after it jumped 1.92% on improvement in the global economy. Consumer Durable climbed 1.8%, Oil & Gas surged 1.13%, and Pharma rose 1.08%. Among other gainers, Realty, Capital Goods, and Auto advanced 0.68%, 0.54%, and 0.47%, respectively, while FMCG gained 0.19%, Power grew 0.12%, and Metal edged up 0.1%. However, Banking sector declined 0.88% on profit-booking.

US and European markets advance

- The US stocks advanced as economic data and the reappointment of Federal Reserve Chief Ben Bernanke strengthened expectations for a recovery and offset forecasts of federal budget red ink.
- European shares rose on Tuesday after data showed the US consumer confidence climbed more than expected in August on an improved outlook on the job market and the overall economy.

Index	Latest	1D Chg	YTD
Sensex (25-Aug-09)	15,688.47	0.38%	3.87%
Nifty (25-Aug-09)	4,659.35	0.36%	1.58%
Nasdaq (25-Aug-09)	1,639.90	0.31%	35.34%
DJIA (25-Aug-09)	9,539.29	0.32%	8.69%
S&P 500 (25-Aug-09)	1,028.00	0.24%	13.81%
FTSE (25-Aug-09)	4,916.80	0.42%	10.88%
CAC 40 (25-Aug-09)	3,680.61	0.78%	14.38%
Nikkei 225 (25-Aug-09)	10,497.36	(0.79)%	18.49%
Hang Seng (25-Aug-09)	20,435.24	(0.49)%	42.03%

SENSEX		
Top Gainers	Close	1DGain
Tata Motors	490.25	7.10%
Wipro	544.50	3.86%
RIL	2,023.75	2.51%
Rel Comm	262.25	2.22%
Grasim Industries	2,666.15	2.04%

Top Losers		
Close	1DLoss	
SBI	(2.36)%	
BHEL	(1.76)%	
Bharti Airtel	(1.62)%	
ICICI Bank	(1.07)%	
ONGC	(1.00)%	

NIFTY		
Top Gainers	Close	1DGain
Ranbaxy	343.70	7.02%
Tata Motors	490.35	6.86%
HCL	307.20	5.93%
Suzlon	92.10	4.48%
Wipro	543.75	3.70%

Top Losers		
Close	1DLoss	
BPCL	(2.92)%	
IDEA	(2.85)%	
SBI	(2.38)%	
SAIL	(2.37)%	
GAIL	(1.83)%	

Market Stats		
	BSE	NSE
Advance-Decline ratio	1.59	1.45
Volume (in'000)	534,100	971,052

SENSEX



NIFTY



Corporate Announcements:



- **Aban Offshore** has signed contract worth USD 603 bn for the deployment of three newly builds jack-up rigs (from the deep driller series) in the Middle East. (BS)
- **Maruti Suzuki India** is expecting its sales to grow by over 10% during the current fiscal on the back of last year's low-base and is planning to upgrade all its models to Bharat Stage-IV emission norms compliant by March 2010. (BS)
- **ABB India** has bagged an order worth Rs. 1.28 bn from state-run Power Grid Corporation of India for setting up a sub-station in Gujarat. (BS)
- **Lupin** is planning to borrow up to Rs. 5 bn from corporate bodies and various financial institutions. (BS)

Economic and Political Headlines:

- Indians spend a whopping Rs. 300 bn every year on fuel and maintenance cost on power back-up equipments to secure themselves against frequent outages. (BS)
- The government ruled out any increase in its borrowing programme for the current fiscal and said expenditure needs due to failed monsoon would be met with additional tax and adjustments within the budget. (BS)

International News Headlines:

- The US consumer confidence climbed to 54.1 in August, more than forecast and national home prices increased for the first time in three years, signaling government efforts to right the world's biggest economy are starting to pay off. (Bloomberg)
- The UK mortgage approvals rose to 38,181 in July, compared with 35,564 in June, the highest level since February 2008. (Bloomberg)
- Hong Kong exports fell 19.9% from a year earlier in July, a faster pace as demand from the US and Europe weakened, signaling the economic recovery may be slow. (Bloomberg)

Most Active Stocks by Value (in Cr)

BSE	Close	%Chg	Value	Volume
Bharti Airtel	407.25	(1.62)%	243	5,967,823
Satyam	107.95	6.62%	209	19,800,914
RIL	2,023.75	2.51%	194	971,451
HDIL	306.05	3.40%	189	6,315,959
Suzlon Energy	92.10	4.48%	167	18,454,903

NSE	Close	%Chg	Value	Volume
RIL	2,025.65	2.60%	649	3,250,116
Suzlon Energy	92.10	4.48%	542	59,841,049
HDIL	305.80	2.98%	481	16,077,676
Satyam	107.85	6.52%	464	44,086,317
Unitech	90.55	(0.11)%	452	50,264,647

Most Active Calls by Contract Value (in Cr)

	Value	Price	% Chg
Nifty 4700 Call Aug-09	6,881	27.15	(9.35)%
Nifty 4600 Call Aug-09	6,595	81.65	0.93%

Most Active Puts by Contract Value (in Cr)

Nifty 4600 Put Aug-09	6,647	22.85	(26.76)%
Nifty 4500 Put Aug-09	3,826	6.35	(42.53)%

Most Active Future Contracts by Value (in Cr)

Nifty Aug-09	14,247	4,660.95	0.20%
Nifty Sep-09	4,306	4,669.50	0.23%

Top Contracts by Change in Open Interest

Contract	Change in OI	Price	% Chg
IFCI Sep-09	9,897,280	51.85	(0.29)%
Dish TV Sep-09	9,280,300	48.10	0.52%

Fill open positions in Derivatives (NSE)

	Idx Fut	Ind Opt	Stk Fut	Stk Opt
No of Contracts	923,424	1,696,433	849,577	63,118
Amt (in cr.)	20,540	39,334	26,501	1,966

Fills (Rs. Cr.)*	25-Aug-09	MTD	YTD
Equity inflows	1,931	35,810	350,617
Equity outflows	2,190	40,197	345,698
Net	(259)	(4,388)	4,919

DII's (Rs. Cr.)*	25-Aug-09	MTD	YTD
Equity inflows	1,445	22,525	189,225
Equity outflows	1,009	17,722	166,390
Net	437	4,803	22,835

* Fill & DII data is provisional in nature

Commodities	Latest	1DChg
Brent (USD/bbl) (Aug 25, 2009)	73.06	(1.80)%
Gold (USD/oz) (Aug 25, 2009)	950.50	(0.11)%
Cu (USD/lb) (Aug 25, 2009)	2.85	(2.06)%

X-rate	25-Aug-09	1DChg	1MChg
USD/Rs.	48.8	0.60%	0.85%
GBP/Rs.	80.0	0.12%	0.06%
EUR/Rs.	69.7	0.40%	1.60%
JPY/Rs.	51.9	1.55%	1.62%

ADR/GDR (USD)	25-Aug-09	1DChg
Dr Reddy's	16.42	(0.67)%
HDFC Bank	99.23	0.61%
ICICI Bank	31.41	1.16%
Infosys	43.08	1.70%
Wipro	15.76	2.20%
Tata Communications	20.91	(0.81)%
Tata Motors	11.98	0.93%
MTNL	3.93	0.00%
Patni	18.42	5.20%
Sterlite	13.20	(0.15)%

Macro Economic Indicators

GDP Growth*	6.70%
Inflation (week ended Aug 8, 2009)	(1.53)%
Index of Industrial Production (IIP) growth (June)	7.80%
CRR (Aug 25, 2009)	5.00%
SLR (Aug 25, 2009)	24.00%

* As per CSO Estimate for 2008-09

BSE Bulk Deals

COMPANY	CLIENT	TRAN	QTY	TRADED PRICE
ADESHWAR COT	NILESH KRUSHNA PALANDE	SELL	64,250	10.03
ALPHAGEO IND	JMP SECURITIES PVT LTD	BUY	75,092	223.74
ALPHAGEO IND	JMP SECURITIES PVT LTD	SELL	53,840	221.64
AVANCE TECHN	B BALAJI	BUY	250,000	2.17
AVANCE TECHN	JASMIN S BAJORIYA	SELL	372,000	2.24
AVANCE TECHN	RAJIV KHANNA	SELL	400,000	2.17
AVANCE TECHN	RANGANATHAN A	BUY	250,000	2.17
AVANCE TECHN	RATHOD MANOJ CHHAGANLAL HUF	SELL	500,000	2.17
EDSERV SOFT	SETU SECURITIES PVT LTD	BUY	78,950	82.90
EDSERV SOFT	SETU SECURITIES PVT LTD	SELL	85,156	82.66
FILMCIT MEDI	WELLNESS COMMUNICATION (P) LTD	SELL	1,700,000	1.21
GMR FERRO	PRIME INDIA INVESTMENT FUND LTD	SELL	71,403	32.25
GSS AMERICA	DHANANJAY MONEY MANAGEMENT SERVICES	BUY	65,098	204.14
GSS AMERICA	DHANANJAY MONEY MANAGEMENT SERVICES	SELL	75,049	204.34
IL & FS INVE	XITIJ INVESTMENTS	BUY	265,000	183.09
JAI MATA GLA	HITESH SHASHIKANT JHAVERI	SELL	91,269	19.30
MAJESTIC AUT	Naman Securities & Finance Pvt. Ltd.	SELL	53,030	68.41
POWERSOFT	COSMO INVESTMENT	BUY	83,052	29.11
POWERSOFT	COSMO INVESTMENT	SELL	78,052	28.10
PUNJ ALK CHE	NETEDGE.TECHNOSOFT.PRIVATE.LIMITED	BUY	119,500	35.51
RISHABHDEV	SHELENDRA N BARADIA	SELL	150,000	16.56
SAARC NET	GOVIND SHARDA	SELL	500,000	1.77
SELAN EXPLO*	JMP SECURITIES PVT LTD	BUY	71,245	308.47
SELAN EXPLO*	Naman Securities & Finance Pvt. Ltd.	BUY	74,634	303.41
SELAN EXPLO*	Naman Securities & Finance Pvt. Ltd.	SELL	80,663	295.44
SHAMKE MULTI	SARAGO VINIYOG PVT LTD	SELL	200,000	1.06
SHAMKE MULTI	SNEHALATHA SINGHI	BUY	217,576	1.06
SHAMKE SPINE	SARAGO VINIYOG PVT LTD	SELL	200,000	1.05
SHAMKE SPINE	SNEHALATHA SINGHI	BUY	236,906	1.05
SPECTACLE	SUVIDHA SECURITIES PVT LTD	SELL	382,660	42.00
SPICEJET LTD	JMP SECURITIES PVT LTD	BUY	1,604,101	27.11
SPICEJET LTD	JMP SECURITIES PVT LTD	SELL	1,291,436	26.87
VARUN INDS	HITESH SHASHIKANT JHAVERI	BUY	162,281	149.06
VARUN INDS	HITESH SHASHIKANT JHAVERI	SELL	181,038	149.03

Note: Bulk Deals over and above 50,000 shares are only considered

MORNING BRIEF *India*

Daily Market Update

August 26, 2009

NSE Bulk Deals

COMPANY	CLIENT	TRAN	QTY	TRADED PRICE
EVERONN	NANDITA MIHIR MEHTA	SELL	112,853	373.58
FAME	RATNABALI CAPITAL MARKETS LTD.	SELL	249,647	22.65
GMRFER	PRIME INDIA INVESTMENT FUND LTD	SELL	79,112	32.63
GMRFER	SATABDI INVESTMENT PVT LTD	SELL	100,137	30.54
ISPATIND	JAYPEE CAPITAL SERVICES LTD.	BUY	6,519,891	22.14
ISPATIND	JAYPEE CAPITAL SERVICES LTD.	SELL	6,923,639	22.15
MSKPROJ	MERRILL LYNCH CAPITAL MARKETS ESPANA S.A. SVB	SELL	157,321	79.74
ORCHIDCHEM	GLOBE CAPITAL MARKET LIMITED	BUY	361,587	113.58
ORCHIDCHEM	GLOBE CAPITAL MARKET LIMITED	SELL	256,587	115.58
ORCHIDCHEM	RATNABALI CAPITAL MARKETS LTD.	BUY	476,969	112.08
ORCHIDCHEM	RATNABALI CAPITAL MARKETS LTD.	SELL	78,069	116.09
ROLTA	MACQUARIE BANK LIMITED	BUY	1,429,370	174.69
SELAN	DINESH MUNJAL(HUF)	BUY	89,931	310.13
SELAN	DINESH MUNJAL(HUF)	SELL	92,936	308.01
SELAN	NAMAN SECURITIES & FINANCE PVT. LTD	BUY	123,126	303.88
SELAN	NAMAN SECURITIES & FINANCE PVT. LTD	SELL	148,476	302.57
TATACOFFEE	CITIGROUP GLOBAL MKTS MAURITIUS PVT LTD	SELL	100,000	375.67

Note: Bulk Deals over and above 50,000 shares are only considered

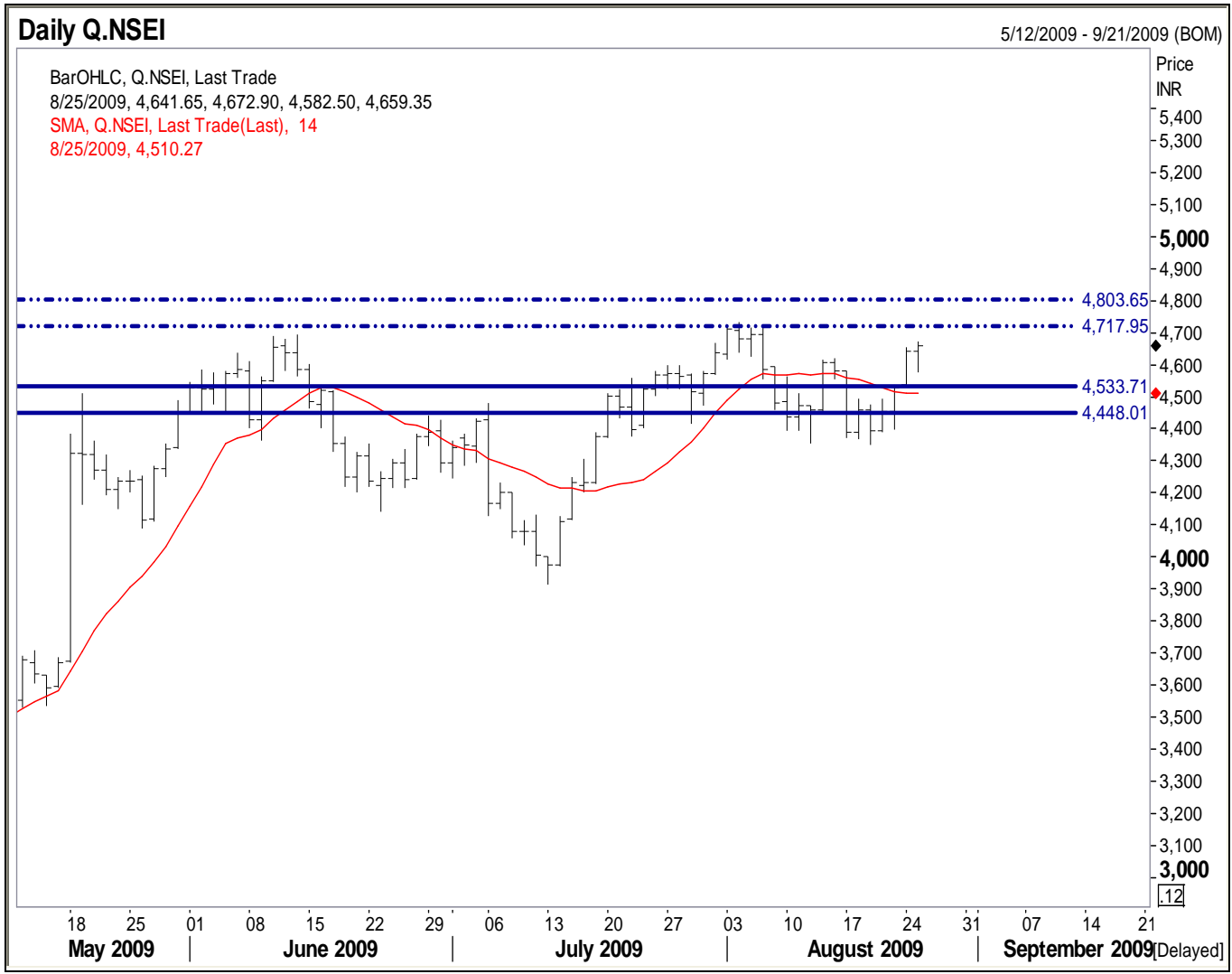
MORNING BRIEF *India*

Daily Market Update

August 26, 2009

Technical Analysis

NIFTY: 4,659.35



MORNING BRIEF *India*

Daily Market Update

August 26, 2009

Name	LTP	Support 1	Support 2	Resistance 1	Resistance 2
NIFTY	4,659.35	4,533.71	4,448.01	4,717.95	4,803.65
ABAN Offshore Ltd	1,210.05	1,164.55	1,131.50	1,252.55	1,281.95
ABB Ltd India	730.75	700.90	691.30	746.50	760.40
ACC Limited	789.05	770.10	753.55	808.55	825.40
Aditya Birla Nuvo	950.20	936.10	913.65	985.65	1,003.30
Ambuja Cements	97.85	95.85	94.40	102.05	104.85
Asian Paints Ltd	1,359.65	1,308.80	1,285.35	1,405.85	1,430.30
Axis Bank	916.50	875.15	859.55	940.70	970.90
Bajaj Auto Ltd	1,134.60	1,077.30	1,047.30	1,188.70	1,215.15
Bank Of Baroda	426.10	417.25	409.84	435.00	440.20
BF Utilities Ltd	873.45	825.90	815.60	910.45	930.60
Bharat Electronics	1,430.05	1,415.70	1,385.10	1,495.65	1,532.05
Bharat Forge Co	225.45	213.95	208.90	234.25	240.05
Bharat Heavy Electricals	2,303.50	2,265.95	2,243.05	2,360.54	2,389.15
Bharat Petroleum	502.85	493.85	482.30	518.50	525.40
Bharti Airtel Ltd	408.05	400.65	395.75	415.30	420.45
Bosch Ltd	4,013.95	3,927.60	3,855.85	4,075.55	4,145.30
Cairn India	258.75	247.10	240.85	267.65	272.05
Canara Bank	265.20	260.55	254.75	273.80	279.60
Cipla Ltd	260.60	250.80	246.50	266.20	269.85
Container Corporation	1,241.15	1,189.25	1,162.35	1,292.95	1,320.80
Crompton Greaves	306.50	293.90	287.15	312.60	317.80
Dabur India Ltd	125.55	121.40	119.15	129.95	132.45
DLF Ltd	393.20	386.95	374.50	413.05	422.10
Dr Reddy's Labs	809.40	782.85	769.45	818.65	832.05
Essar Oil Ltd	140.70	135.20	132.50	144.90	150.85
Financial Technologies	1,443.15	1,415.20	1,388.45	1,477.10	1,511.15
Gail India Ltd	334.80	328.30	324.35	342.25	347.85
Glaxosmithkline	1,409.50	1,378.45	1,357.65	1,437.80	1,460.60
Glenmark Pharma	216.25	211.35	204.05	222.45	226.35
GMR Infrastructure	135.60	127.85	125.35	140.15	145.65
Grasim Inds Ltd	2,667.95	2,620.60	2,565.55	2,710.75	2,745.05
HCL Technologies Ltd	307.20	297.35	287.50	322.75	336.85
HDFC	2,508.60	2,466.95	2,421.15	2,575.40	2,630.55
HDFC Bank Ltd	1,486.95	1,459.60	1,435.50	1,503.20	1,525.70
Hero Honda Motors	1,515.20	1,489.25	1,455.25	1,561.25	1,595.25
Hindalco	107.95	105.25	103.20	110.70	113.35
Hindustan Lever	269.50	260.65	255.10	275.15	280.15
Hindustan Zinc	746.45	726.05	711.70	770.95	783.55
HPCL	348.95	336.95	330.65	355.60	363.90
ICICI Bank Ltd	759.20	740.45	724.30	785.05	804.05
Idea Cellular	80.10	78.45	76.05	84.55	85.25
Indian Hotels Co	66.30	62.85	61.35	68.90	70.40
Indian Oil Corporation	572.05	560.85	547.00	602.50	617.75
Indian Overseas Bank	80.15	78.05	76.65	82.30	83.45
Industrial Dev Bk Ind	97.65	92.25	90.15	100.20	102.14
Infosys Technologies Ltd	2,095.00	2,063.05	2,038.95	2,121.95	2,140.65
Infrastructure Development	129.95	122.45	118.65	138.45	142.65
ITC Ltd	240.50	234.75	230.85	245.75	249.25
Jaiprakash Associates	220.60	215.25	204.75	228.80	235.15

MORNING BRIEF *India*

Daily Market Update

August 26, 2009

Name	LTP	Support 1	Support 2	Resistance 1	Resistance 2
Jet Airways India	249.45	238.10	230.70	255.65	261.65
Jindal Steel & Power	3,266.10	3,132.35	3,045.45	3,305.20	3,380.30
JSW Steel Ltd	715.10	703.60	690.70	730.85	742.35
Kotak Mahindra Bank	721.20	715.70	705.70	748.60	764.30
Larsen & Toubro	1,573.50	1,533.95	1,485.20	1,615.15	1,655.75
MMTC Ltd	27,907.40	27,065.10	26,440.10	29,152.35	29,875.45
MTNL	95.00	91.45	89.65	97.85	99.65
Mahindra & Mahindra	810.25	771.60	755.65	830.60	855.00
Mangalore Refineries	83.15	80.45	78.60	85.05	86.95
Maruti Udyog Ltd	1,417.75	1,392.55	1,352.15	1,452.65	1,466.00
Mundra Port and SEZ Ltd	542.45	525.65	518.90	550.15	558.50
National Aluminum Co	336.10	321.50	314.00	345.65	352.05
Natl Mineral Development	363.30	355.85	351.05	369.65	375.80
Nestle India Ltd	2,210.00	2,180.45	2,156.20	2,250.15	2,271.40
Neyveli Lignite	131.25	125.65	122.05	135.45	139.40
NTPC Limited	210.70	204.10	201.45	218.65	222.05
Oil & Natural Gas Corp	1,183.65	1,165.60	1,153.35	1,205.95	1,215.20
Oracle Financial Services	1,711.70	1,656.80	1,625.05	1,755.00	1,775.50
Patni Computers	451.25	423.77	407.80	468.85	486.25
Power Finance Corporation	225.75	219.15	214.05	230.25	235.75
Power Grid Corporation	109.95	103.25	100.05	112.35	117.65
Punjab Natl Bank	671.70	663.45	651.35	685.40	697.50
Ranbaxy Labs Ltd	343.70	324.50	315.75	357.54	368.25
Reliance Capital	822.80	800.80	783.85	855.55	875.45
Reliance Communication	263.25	256.15	249.75	272.25	279.35
Reliance Infrastructure	1,140.50	1,110.55	1,088.10	1,162.10	1,190.70
Reliance Industries	2,025.65	1,970.60	1,940.95	2,058.55	2,094.15
Reliance Petroleum	124.75	118.45	115.05	128.55	132.05
Sesa Goa Ltd	222.95	210.60	202.45	228.05	236.60
Siemens India	483.15	465.25	449.85	502.85	515.80
Sobha Developers	239.20	230.65	222.70	254.40	263.45
State Bank of India	1,747.60	1,715.30	1,696.52	1,790.40	1,821.00
Steel Authority of India Ltd	162.60	159.85	155.65	165.45	168.65
Sterlite Industries	653.95	634.80	616.30	668.70	682.60
Sun Pharmaceutical	1,194.30	1,165.15	1,151.75	1,211.95	1,232.00
Sun TV Network	268.00	261.50	257.15	278.55	284.40
Suzlon Energy Ltd	92.10	87.70	83.65	96.20	98.40
Tata Communications	508.00	498.05	491.55	517.55	526.20
Tata Consultancy	528.30	515.05	509.85	536.80	544.65
Tata Motors Ltd	490.35	475.35	461.25	507.90	520.40
Tata Power Co	1,314.25	1,295.20	1,280.10	1,340.55	1,360.45
Tata Steel Limit	457.85	446.55	440.35	464.10	472.35
Tech Mahindra Ltd	891.00	860.40	827.50	920.25	956.15
Union Bank of India	213.15	200.50	195.05	220.42	225.45
Unitech Limited	90.55	88.05	85.15	93.80	95.20
United Breweries	164.15	159.00	156.05	170.20	175.00
United Spirits	929.30	907.95	886.85	952.30	965.00
Videocon Industries	227.15	218.45	212.45	235.65	240.65
Wipro Limited	543.75	522.30	513.65	555.95	566.85
Zee Entertainment	205.80	195.65	188.65	212.65	220.05

Disclaimer:

This report is not for public distribution and is only for private circulation and use. The Report should not be reproduced or redistributed to any other person or person(s) in any form. No action is solicited on the basis of the contents of this report.

This material is for the general information of the authorized recipient, and we are not soliciting any action based upon it. This report is not to be considered as an offer to sell or the solicitation of an offer to buy any stock or derivative in any jurisdiction where such an offer or solicitation would be illegal. It is for the general information of clients of Indiabulls Securities Limited. It does not constitute a personal recommendation or take into account the particular investment objectives, financial situations, or needs of individual clients. You are advised to independently evaluate the investments and strategies discussed herein and also seek the advice of your financial adviser.

Past performance is not a guide for future performance. The value of, and income from investments may vary because of changes in the macro and micro economic conditions. Past performance is not necessarily a guide to future performance.

This report is based upon information that we consider reliable, but we do not represent that it is accurate or complete, and it should not be relied upon as such. Any opinions expressed here in reflect judgments at this date and are subject to change without notice. Indiabulls Securities Limited (ISL) and any/all of its group companies or directors or employees reserves its right to suspend the publication of this Report and are not under any obligation to tell you when opinions or information in this report change. In addition, ISL has no obligation to continue to publish reports on all the stocks currently under its coverage or to notify you in the event it terminates its coverage. Neither Indiabulls Securities Limited nor any of its affiliates, associates, directors or employees shall in any way be responsible for any loss or damage that may arise to any person from any error in the information contained in this report.

The analyst for this report certifies that all of the views expressed in this report accurately reflect his or her personal views about the subject stock and no part of his or her compensation was, is or will be, directly or indirectly related to specific recommendations or views expressed in this report. No part of this material may be duplicated in any form and/or redistributed without Indiabulls Securities Limited prior written consent.

The information given herein should be treated as only factor, while making investment decision. The report does not provide individually tailor-made investment advice. Indiabulls Securities Limited recommends that investors independently evaluate particular investments and strategies, and encourages investors to seek the advice of a financial adviser. Indiabulls Securities Limited shall not be responsible for any transaction conducted based on the information given in this report, which is in violation of rules and regulations of National Stock Exchange or Bombay Stock Exchange.