

**About the report:**

Candlestick Pattern is a pictorial representation of high, low, close and open prices of particular scrip. It shows how the scrip has closed compared to its open, low and high prices. Based on the close relative to the open and relative to the previous day's close and open, there are basically two kinds of patterns namely Bullish reversal and Bearish reversal patterns.

Bullish reversal patterns appear in down trend and mark a reversal in the trend (i.e) upwards. Bearish reversal patterns appear in uptrend and mark reversal in trend (i.e) downwards.

Eg of bullish reversal-Hammer, Inverted Hammer etc.

Eg of bearish reversal-Shooting star, Darkcloud etc.

This report "TRENDZ DAILY" provides the list of scrips which exhibit these patterns and the levels above which there will be a reversal in trend.

Both Buying and Selling prices are provided as even a bullish reversal pattern may sometimes change its trend to bearish and bearish reversal pattern may change its trend to bullish.

Strict stoploss is always advisable.

Caution: All Buying and Selling prices are applicable only after 10:15 a.m.

HAMMER: Hammer candlesticks form when a security moves significantly lower after the open, but rallies to close well above the intraday low. The resulting candlestick looks like a square lollipop with a long stick. If this candlestick forms during an

advance, then it is called a Hanging Man.



SCRIP NAME	BUY PRICE	TARGET1	TARGET2	TARGET3	STOPLOSS	SELL PRICE
ABB Ltd Jan08	1420	1448	1463	1477	1406	1406
Adlabs Films Ltd Jan08	1515	1545	1560	1576	1500	1500
Allahabad Bank Jan08	135	137	139	140	133	133
Andhra Bank Ltd Jan08	116	118	119	120	115	112
Aptech Ltd Jan08	365	373	376	380	362	357
Axis Bank Jan08	1187	1211	1223	1234	1175	1175
Bata India Jan08	251	256	259	262	249	249
Bharat Earth Mover Jan08	1670	1704	1720	1737	1653	1620
Bharti Airtel Jan08	872	889	898	906	863	850
Bharat Hvy Electrc Jan08	2400	2448	2472	2496	2376	2342
Bharat Forge Ltd Jan08	354	361	365	368	350	352
Biocon Ltd Jan08	553	564	569	575	547	538
Birla Corp Jan08	282	288	290	293	279	272
Cairn India Ltd Jan08	235	240	242	245	233	233
Central Bank of In Jan08	137	139	141	142	135	133
Corporation Bank Jan08	437	446	450	454	433	432
DLF Ltd Jan08	1162	1185	1197	1208	1150	1144
Great Eastern Ship Jan08	490	500	505	510	485	478
GMR Infrastructure Jan08	221	225	227	230	218	218
Gujarat Narmada Jan08	218	222	224	226	215	210
GTS Ltd Jan08	272	277	280	283	269	270
Hindustan Construc Jan08	224	228	230	233	222	217
HCL Technologies Jan08	275	281	283	286	272	268
HDFC Bank Limited Jan08	1732	1767	1784	1801	1715	1686
Housing Dvlmt Finc Jan08	2900	2958	2987	3016	2871	2858
Housing Devt & Inf Jan08	1347	1374	1387	1401	1334	1333
HTMT Glob Solution Jan08	483	493	497	502	478	469
Hindalco Industry Jan08	196	200	202	204	194	192
ICICI Bank Limited Jan08	1372	1399	1413	1426	1358	1340
IDEA Cellular Ltd Jan08	136	139	140	142	135	135
Infrastructure Dev Jan08	226	231	233	235	224	216

India Infoline Jan08	1676	1709	1726	1743	1659	1644
3i Infotech Ltd Jan08	140	143	144	146	139	138
ITC Limited Jan08	215	220	222	224	213	211
IVR Prime Urban Jan08	391	399	403	407	387	388
Jaiprakash Hydro Pw Jan08	119	121	123	124	118	118
Jaiprakash Associa Jan08	450	459	464	468	446	437
Jindal Steel & Pwr Jan08	15708	16022	16179	16336	15551	15401
JSW Steel Limited Jan08	1190	1214	1226	1238	1178	1159
Karnataka Bank Ltd Jan08	266	271	274	277	263	255
Cummins India Ltd Jan08	373	380	384	388	369	365
Kotak Mahindra Bk Jan08	1262	1287	1300	1312	1249	1246
Moser Baer India Jan08	278	283	286	289	275	276
Mahindra &Mahindra Jan08	754	769	777	784	746	738
Mphasis BFL Ltd Jan08	294	300	303	306	291	276
Chennai Petroleum Jan08	384	392	396	399	380	381
Mahanagar Telephon Jan08	187	191	193	194	185	185
National Aluminium Jan08	429	438	442	446	425	413
NTPC Limited Jan08	272	277	280	283	269	263
Neyveli Lignite Jan08	238	243	245	248	236	232
Nicholas Piramal Jan08	349	356	359	363	345	341
OMAXE Ltd Jan08	483	493	497	502	478	444
Peninsula Land Ltd Jan08	145	148	149	151	144	144
Pantaloon Retail Jan08	785	801	809	816	777	780
Petronet LNG Ltd Jan08	109	111	112	113	108	107
Power Finance Corp Jan08	257	262	265	267	254	252
Puravankara Proj Jan08	436	445	449	453	432	428
Reliance Capital Jan08	2728	2782	2809	2837	2700	2707
Reliance Comm Jan08	774	789	797	805	766	741
Reliance Energy Jan08	2320	2366	2390	2413	2297	2285
Rolta India Ltd Jan08	692	706	713	720	685	688
Rel Nat Resource Jan08	222	226	228	230	219	211
Sasken Comm Tech Jan08	292	298	301	304	289	288
State Bank India Jan08	2443	2492	2516	2541	2419	2385
S Kumar Nationwide Jan08	155	158	160	161	153	154
Sobha Developers Jan08	931	950	959	968	922	920
Shree Cement Ltd Jan08	1323	1349	1363	1376	1310	1302
SRF Limited Jan08	178	181	183	185	176	175
Sterlite Industry Jan08	960	979	989	998	950	935
Strides Arcolab Jan08	254	259	261	264	251	249
Suzlon Energy Ltd Jan08	2030	2071	2091	2111	2010	2013

Sun TV Ltd Jan08	407	415	419	423	402	385
Triveni Engg & Ind Jan08	166	169	171	173	164	161
Titan Industries Jan08	1520	1550	1566	1581	1505	1499
Tata Teleservices Jan08	55	56	57	57	54	55
Union Bank India Jan08	212	217	219	221	210	208
United Spirits Ltd Jan08	1991	2031	2051	2071	1971	1977
Unitech Ltd Jan08	510	520	525	530	505	493
Ultra Tech Cement Jan08	910	928	937	946	901	889
Vijaya Bank Jan08	86	88	89	90	86	84

INVERTED HAMMER: A one-day bullish reversal pattern. In a downtrend, the open is lower, then it trades higher, but closes near its open, therefore looking like an inverted



SCRIP NAME	BUY PRICE	TARGET1	TARGET2	TARGET3	STOPLOSS	SELL PRICE
Aditya Birla Ltd Jan08	2332	2378	2401	2425	2308	2297
ACC Limited Jan08	867	884	893	902	858	865
AMTEK Auto Ltd Jan08	393	401	405	409	389	383
Bharat Electronics Jan08	1905	1943	1962	1981	1886	1855
Bongaigaon Ref Ltd Jan08	90	91	92	93	89	86
CESC Limited Jan08	644	656	663	669	637	612
Colgate-Palmolive Jan08	462	471	476	480	457	451
CMC Ltd Jan08	1180	1204	1215	1227	1168	1116
Dabur India Ltd Jan08	114	116	117	118	112	110
Essar Oil Limited Jan08	290	296	299	302	287	290
Grasim Industries Jan08	3307	3373	3406	3439	3274	3275
Havell's India Ltd Jan08	634	646	653	659	627	625
Matrix Laboratory Jan08	222	226	228	230	219	221
Hindustan Petrolm Jan08	338	345	349	352	335	336
IFCI Limited Jan08	87	89	90	91	86	82
I-Flex Solutions Jan08	1473	1502	1517	1532	1458	1400
Infosys Technology Jan08	1504	1534	1549	1564	1488	1490
Indian Overseas Bk Jan08	193	197	199	200	191	182
Jammu and Kashmir Jan08	835	852	860	868	827	820

Kesoram Industries Jan08	525	536	541	546	520	521
New Delhi Tel Ltd Jan08	452	461	466	470	448	440
Patni Computer Sys Jan08	294	299	302	305	291	291
Patel Engineering Jan08	961	980	990	999	951	955
Rajesh Exports Jan08	870	887	896	905	861	850
Sterling Biotech Jan08	164	167	169	171	162	163
Syndicate Bank Jan08	117	119	121	122	116	112
Sterlite Tech Jan08	295	301	304	307	292	292
Tata Consultancy Jan08	950	969	979	988	941	935
Tata Tea Ltd Jan08	827	844	852	860	819	816
Financial Techno Jan08	2400	2448	2472	2496	2376	2336

DOJI: Doji form when a security's open and close are virtually equal. The length of the upper and lower shadows can vary, and the resulting candlestick looks like, either, a cross, inverted cross, or plus sign. Doji convey a sense of indecision or tug-of-war between buyers and sellers. Prices move above and below the opening level during the



session, but close at or near the opening level.

NEUTRAL DOJI:

SCRIP NAME	BUY PRICE	TARGET1	TARGET2	TARGET3	STOPLOSS	SELL PRICE
AIA Engineering Jan08	1605	1637	1653	1669	1589	1600
Ansal Property Jan08	364	371	375	378	360	356
Arvind Mills Ltd Jan08	78	79	80	81	77	76
Axis Bank Jan08	1187	1211	1223	1234	1175	1175
Bombay Dyeing Jan08	903	921	930	939	894	902
Bhushan Steel Jan08	1481	1511	1525	1540	1466	1465
Ballarpur Ind Jan08	168	171	173	174	166	167
Bajaj Auto Limited Jan08	2428	2476	2500	2525	2403	2427
Bajaj Hindustan Jan08	318	324	328	331	315	314
Bank of Baroda Jan08	472	481	486	491	467	453
Bharat Petroleum Jan08	442	451	455	460	438	438
Balrampur Chini Jan08	105	107	108	109	104	105
Bombay Rayon Jan08	357	364	368	371	354	350
Chambal Fertilizer Jan08	79	81	81	82	78	78
Crompton Greaves Jan08	376	384	387	391	372	374
Deccan Aviation Jan08	255	260	263	265	252	253

Dr Reddy's Labrtry Jan08	673	687	694	700	667	665
Educomp Solutions Jan08	5501	5611	5666	5721	5446	4860
Everest Kanto Jan08	345	352	355	359	341	341
Gail India Ltd Jan08	498	508	513	518	493	490
Gujarat Alkalies Jan08	240	245	247	250	238	235
Gateway Distripark Jan08	152	155	156	158	150	150
Hero Honda Motors Jan08	695	709	716	723	688	689
Hindustan Lever Jan08	216	220	222	225	214	215
Indust Devel Bank Jan08	173	177	178	180	172	162
IndusInd Bank Jan08	123	126	127	128	122	119
Indian Oil Corp Jan08	673	686	693	700	666	670
Jindal Stainless Jan08	208	212	214	216	205	207
Jindal Steel & Pwr Jan08	15708	16022	16179	16336	15551	15401
Hotel Leela Jan08	64	66	66	67	64	64
LIC Housing Financ Jan08	370	377	381	385	366	369
Lakshmi Mach Works Jan08	2950	3009	3039	3068	2921	2925
Maharashtra Ltd Jan08	552	563	569	574	546	544
Mphasis BFL Ltd Jan08	294	300	303	306	291	276
Nucleus Software Jan08	343	350	353	357	339	340
Nagarjuna Fertiliz Jan08	69	70	71	72	68	68
Nagarjuna Construc Jan08	305	311	314	317	302	303
Oil & Nat Gas Corp Jan08	1257	1282	1294	1307	1244	1242
Parsvnath Dev Jan08	439	448	452	457	435	430
Pantaloon Retail Jan08	785	801	809	816	777	780
Petronet LNG Ltd Jan08	109	111	112	113	108	107
Punjab Natl Bank Jan08	655	668	675	681	648	654
Polaris Software Jan08	118	120	121	123	117	118
Ranbaxy Laboratory Jan08	385	393	397	401	381	383
RELIANCE PETROLEUM Jan08	225	229	232	234	223	214
Sasken Comm Tech Jan08	292	298	301	304	289	288
Steel Authority Jan08	247	252	255	257	245	239
Shipping Co India Jan08	302	308	311	314	299	296
Sesa GOA Ltd Jan08	3325	3392	3425	3458	3292	3312
Shree Renuka Sugar Jan08	1300	1326	1339	1352	1287	1209
S Kumar Nationwide Jan08	155	158	160	161	153	154
Sun Pharmaceutical Jan08	1103	1125	1136	1147	1092	1103
Tata Power Company Jan08	1491	1521	1536	1551	1476	1465
Tata Chemicals Ltd Jan08	365	372	376	380	361	361
TVS Motor Company Jan08	64	66	66	67	64	64
Welspun Guj Jan08	505	515	520	525	500	502
Wockhardt LTD Jan08	409	417	421	425	405	408
Wipro Limited Jan08	454	463	468	472	449	451
Zee Telefilms Jan08	302	308	311	314	299	293

BULLISH DOJI:

SCRIP NAME	BUY PRICE	TARGET1	TARGET2	TARGET3	STOPLOSS	SELL PRICE
ACC Limited Jan08	867	884	893	902	858	856
AIA Engineering Jan08	1605	1637	1653	1669	1589	1584
Ashok Leyland Ltd Jan08	48	49	49	50	47	47
Century Textile In Jan08	1171	1194	1206	1218	1159	1154
Essar Oil Limited Jan08	290	296	299	302	287	287
Matrix Laboratory Jan08	222	226	228	230	219	219
Indian Oil Corp Jan08	673	686	693	700	666	663
Hotel Leela Jan08	64	66	66	67	64	64
Punjab Natl Bank Jan08	655	668	675	681	648	647
Praj Industries Jan08	220	225	227	229	218	218
Reliance Industry Jan08	3136	3199	3230	3262	3105	3101
Satyam Computr Srv Jan08	384	392	396	399	380	380
Sterling Biotech Jan08	164	167	169	171	162	162
Sun Pharmaceutical Jan08	1103	1125	1136	1147	1092	1092

BEARISH DOJI:

SCRIP NAME	SELL PRICE	TARGET1	TARGET2	TARGET3	STOPLOSS	BUY PRICE
Aban Offshore Ltd Jan08	4826	4729	4681	4633	4874	4874
Alok Industries Jan08	96	94	93	92	97	97
Bombay Dyeing Jan08	902	884	875	866	911	911
Ballarpur Ind Jan08	167	164	162	160	169	169
Bajaj Auto Limited Jan08	2427	2378	2354	2329	2451	2451
Balrampur Chini Jan08	105	103	102	100	106	106
Canara Bank Ltd Jan08	359	351	348	344	362	362
Crompton Greaves Jan08	374	367	363	359	378	378
Dena Bank Jan08	84	82	81	80	85	85
GlaxoSmithkline Jan08	1036	1015	1005	995	1046	1046
Hindustan Lever Jan08	215	211	209	206	217	217
Indian Hotels Co Jan08	151	148	146	145	152	152
Jindal Stainless Jan08	207	202	200	198	209	209
LIC Housing Financ Jan08	369	361	357	354	372	372
Larsen & Toubro Jan08	4020	3940	3899	3859	4060	4060
Mangalor Refinery Jan08	129	127	125	124	130	130
Orientl Bnk Comrce Jan08	307	301	298	295	310	310
Polaris Software Jan08	118	115	114	113	119	119
Punj Lloyd Limited Jan08	533	522	517	512	538	538
Sesa GOA Ltd Jan08	3312	3246	3213	3180	3345	3345
Siemens India Ltd Jan08	1916	1878	1859	1840	1935	1935
Tata Motors Ltd Jan08	755	740	732	724	762	762
Wockhardt LTD Jan08	408	400	396	392	412	412
Yes Bank Ltd Jan08	256	251	248	245	258	258

ENGULFING PATTERN: A reversal pattern that can be bearish or bullish, depending upon whether it appears at the end of an uptrend (bearish engulfing pattern) or a downtrend (bullish engulfing pattern). The first day is characterized by a small body,



followed by a day whose body completely engulfs the previous day's body.

BULLISH ENGULFING:

SCRIP NAME	BUY PRICE	TARGET1	TARGET2	TARGET3	STOPLOSS	SELL PRICE
Federal Bank Ltd Jan08	348	355	358	362	345	330
IFCI Limited Jan08	87	89	90	91	86	82
Zee Telefilms Jan08	302	308	311	314	299	293

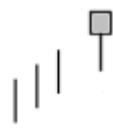
PIERCING LINE: A bullish two-day reversal pattern. The first day, in a downtrend, is a long black day. The next day opens at a new low, and then closes above the midpoint



of the body of the first day.

SCRIP NAME	BUY PRICE	TARGET1	TARGET2	TARGET3	STOPLOSS	SELL PRICE
Bank of Baroda Jan08	472	481	486	491	467	453
Federal Bank Ltd Jan08	348	355	358	362	345	330
Infrastructure Dev Jan08	226	231	233	235	224	216
IFCI Limited Jan08	87	89	90	91	86	82
Sun TV Ltd Jan08	407	415	419	423	402	385
Financial Techno Jan08	2400	2448	2472	2496	2376	2336

HANGING MAN: Hanging Man candlesticks form when a security moves significantly lower after the open, but rallies to close well above the intraday low. The resulting candlestick looks like a square lollipop with a long stick. If this candlestick

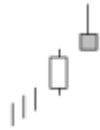


forms during a decline, then it is called a Hammer.

SCRIP NAME	SELL PRICE	TARGET1	TARGET2	TARGET3	STOPLOSS	BUY PRICE
Allahabad Bank Jan08	133	130	129	128	134	135
Bank of India Jan08	429	420	416	412	433	462
Divi's Lab Ltd Jan08	1810	1774	1756	1738	1828	1875
Escorts Limited Jan08	145	142	140	139	146	148
India Cements Ltd Jan08	263	258	255	252	266	273
Jet Airways India Jan08	895	877	868	859	904	903
Lanco Infratech Jan08	739	724	716	709	746	789
Maruti Suzuki Jan08	850	833	825	816	859	861
Suzlon Energy Ltd Jan08	2013	1973	1953	1932	2033	2030
Tata Steel Limited Jan08	829	812	804	796	837	842
United Phosphorus Jan08	403	395	391	387	407	419
Voltas Limited Jan08	245	240	238	235	248	252
Videsh Sanchar Nig Jan08	667	654	647	640	674	672

SHOOTING STAR: A single day pattern that can appear in an uptrend. It opens higher, trades much higher, then closes near its open. It looks just like the Inverted

Hammer except that it is bearish.



SCRIP NAME	SELL PRICE	TARGET1	TARGET2	TARGET3	STOPLOSS	BUY PRICE
Oswal Chem & Fert Jan08	64	62	62	61	64	66
Indian Bank Jan08	213	209	207	204	215	235
IVRCL Infrastructr Jan08	510	500	495	490	515	522
Orchid Chemicals Jan08	302	296	293	290	305	310

Disclaimer The information contained in this report has been obtained from sources believed to be reliable. While utmost care has been taken to create this report, the author or the organization does not take any responsibility for the consequences of this report. Investors who invest on the basis of recommendations mentioned in this report do so at their own risk.