



### Weekly stock watch

Name	Bias	Targets	Support	10DMA	20DMA	CMP
Financial Tech	Up	1425/1581	1330/1315	1347	1359	1344
Praj Industries	Up	112/125	100/95	99	97	106
ACC	Up	928/950	835/803	860	839	872

### Weekly stock watch

Name	Bias	Targets	Resistance	10DMA	20DMA	CMP
Punj Lloyd	Down	194/180	211/217	201	204	205
Dr. Reddy's	Down	1070/990	1181/1202	1177	1141	1142

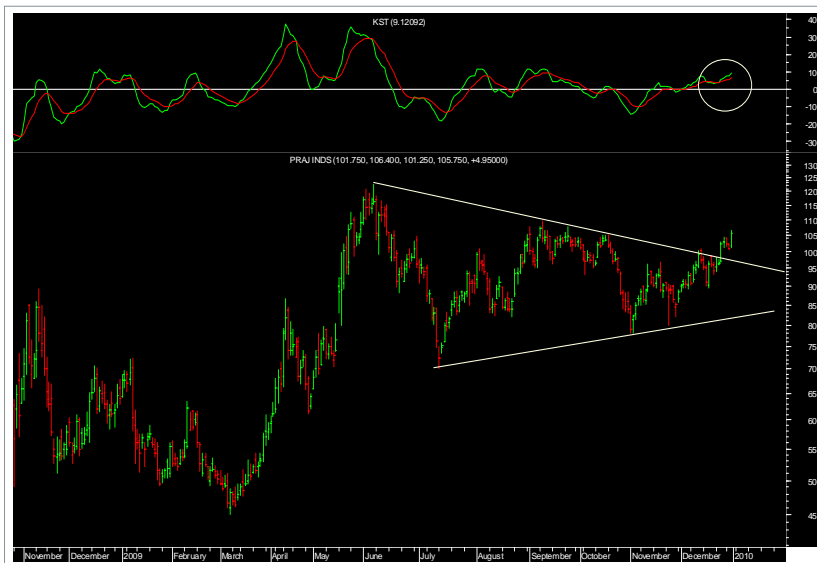
### Financial Tech

The stock seems to have completed the triangle and the setup looks ready for breakout on the upside for at least the minimum target of the triangle. The momentum indicator KST has turned positive, indicating upside strength in the stock.



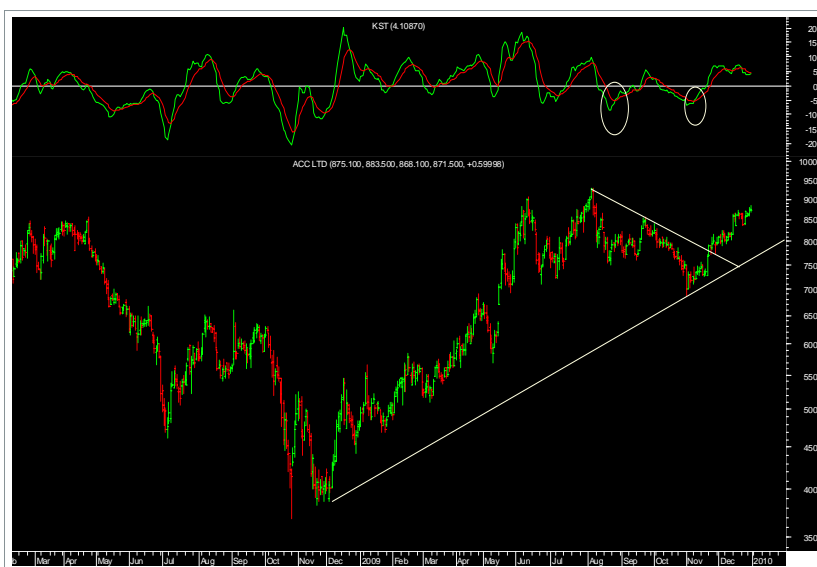
### Praj Industries

The stock has already given a breakout from the triangular pattern on the upside. So the bulls have taken charge to pull the stock on upside with the momentum indicator in buy mode above its zero reference line.



### ACC

The stock has risen impulsively on upside and also given a break above the downtrend line, which are positive signs going ahead. From here, the stock has a good support at its downtrend line and upside potential of the new intermediate high i.e., above 900 levels.



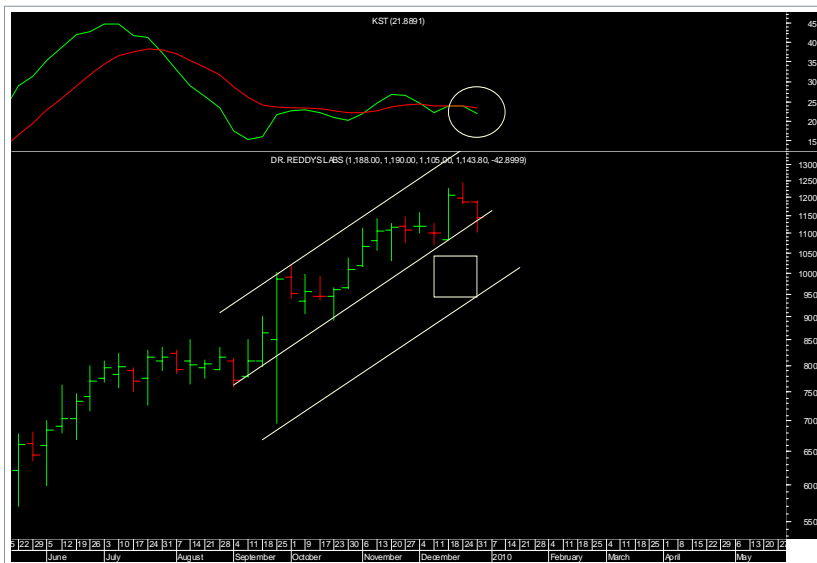
### Punj Lloyd

The stock had fallen in a five wave down pattern with a monthly negative close. It then consolidated in a triangle in December giving a positive close. Now, we reckon that waves A and B are completed and the stock looks all set to start its fresh leg down with pace coming down soon after the triangle breaks on the lower side. Hence, we maintain downward bias on this stock.



### Dr. Reddy's

The stock has completed five waves up in an upward parallel channel and given a break below the channel. So, now it looks to correct or retrace its rise, and the support exists at the equality target of the channel on the downside. Hence, we maintain our bias down for this stock.



#### Disclaimer

\*This document has been prepared by Sharekhan Ltd (SHAREKHAN) This Document is subject to changes without prior notice and is intended only for the person or entity to which it is addressed to and may contain confidential and/or privileged material and is not for any type of circulation. Any review, retransmission, or any other use is prohibited. Kindly note that this document does not constitute an offer or solicitation for the purchase or sale of any financial instrument or as an official confirmation of any transaction.

Though disseminated to all the customers simultaneously, not all customers may receive this report at the same time. SHAREKHAN will not treat recipients as customers by virtue of their receiving this report. The information contained herein is from publicly available data or other sources believed to be reliable. While we would endeavour to update the information herein on reasonable basis, SHAREKHAN, its subsidiaries and associated companies, their directors and employees ("SHAREKHAN and affiliates") are under no obligation to update or keep the information current. Also, there may be regulatory, compliance, or other reasons that may prevent SHAREKHAN and affiliates from doing so. We do not represent that information contained herein is accurate or complete and it should not be relied upon as such. This document is prepared for assistance only and is not intended to be and must not alone be taken as the basis for an investment decision. The user assumes the entire risk of any use made of this information. Each recipient of this document should make such investigations as it deems necessary to arrive at an independent evaluation of an investment in the securities of companies referred to in this document (including the merits and risks involved), and should consult its own advisors to determine the merits and risks of such an investment. The investment discussed or views expressed may not be suitable for all investors. We do not undertake to advise you as to any change of our views. Affiliates of Sharekhan may have issued other reports that are inconsistent with and reach different conclusion from the information presented in this report.

This report is not directed or intended for distribution to, or use by, any person or entity who is a citizen or resident of or located in any locality, state, country or other jurisdiction, where such distribution, publication, availability or use would be contrary to law, regulation or which would subject SHAREKHAN and affiliates to any registration or licensing requirement within such jurisdiction. The securities described herein may or may not be eligible for sale in all jurisdictions or to certain category of investors. Persons in whose possession this document may come are required to inform themselves of and to observe such restriction.

SHAREKHAN & affiliates may have used the information set forth herein before publication and may have positions in, may from time to time purchase or sell or may be materially interested in any of the securities mentioned or related securities. SHAREKHAN may from time to time solicit from, or perform investment banking, or other services for, any company mentioned herein. Without limiting any of the foregoing, in no event shall SHAREKHAN, any of its affiliates or any third party involved in, or related to, computing or compiling the information have any liability for any damages of any kind. Any comments or statements made herein are those of the analyst and do not necessarily reflect those of SHAREKHAN.\*