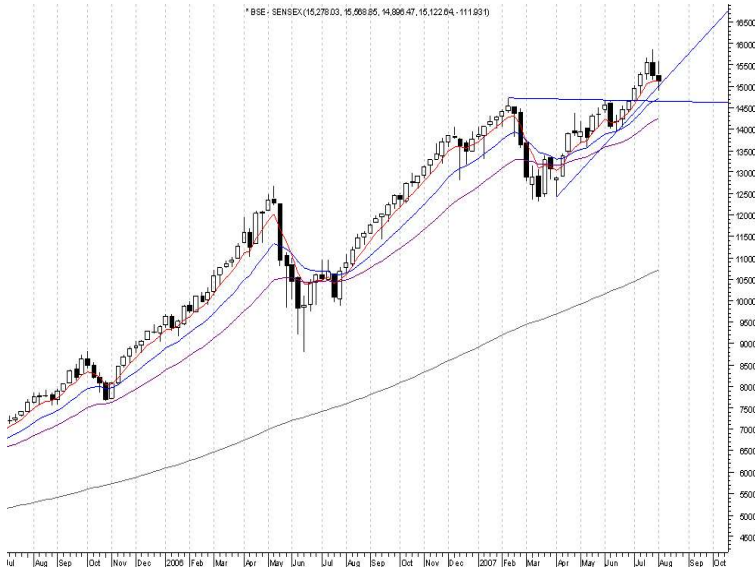


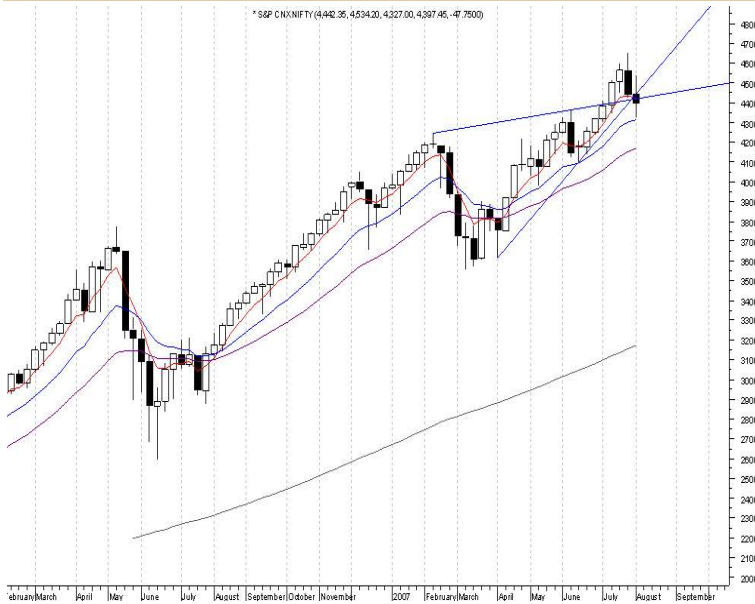
BSE Sensex

* BSE: SENSEX(15278.03, 15,608.85, 14,896.47, 15,122.04 - 111.93)



Nifty

* S&P CNXNIFTY(4442.35, 4534.20, 4327.00, 4397.45, -47.7500)



Note:

- 1 Short-term trading on the basis of technical is a high risk and skill oriented venture and may result in huge losses also. Traders doing so are doing at their own risk. We are not responsible for any damages.
2. Mostly it is not advisable to buy/sell a stock if it touches the target price first and then comes within recommended range of buy/sell.
3. Never wait for actual target to be reached book profits slightly before target price.

Particulars

CNX
Nifty

BSE
Sensex

Open	4442.35	15278.03
High	4534.20	15568.85
Low	4327.00	14896.47
Close	4397.45	15122.64
Previous Close	4445.20	15234.57
5-Week Avg.	4434.53	15121.50
20-Week Avg.	4232.77	14447.30
50-Week Avg.	3942.26	13475.64
RSI (14 Week)	61.43	63.17
Pivot	4419.50	15098.00
S1	4305.80	14919.00
S2	4212.30	14716.00
R1	4512.00	15301.00
R2	4626.70	15480.00

Technical View :

During the week-ended 03.08.07, Nifty and Sensex have exhibited a Bearish candlestick with long shadow on the upper side indicating weakness or selling and both index closed at week's low. This candlestick indicates that there is weakness at higher levels. Hence, it may be prudent to stay away from bottom fishing of long positions for the time being.

On the average front, the 5-week simple moving average is above the 20-week simple moving average and the 20-week average is above the 50-week simple moving average. This indicates that the medium term trend of the market as signified by the averages is still bullish.

On the support front, the immediate support for Nifty is around 4305 level and for the Sensex the support is around 14,920 levels. Breach of these support levels would have bearish implications and may result in a deeper correction. Hence, one may use these levels as the stop loss level for long positions for the time being.

On the resistance front, the Nifty faces resistance at around 4512-4626 level. The Sensex on the other hand faces resistance at around 15,300 levels and thereafter at around 15,480 levels.

Individual Scrips

Recommendation validity Period: 4 weeks. Stop Loss is on weekly closing price basis.

Scrip	Price	Recommendation	Stop Loss	Target
CLOGATE	Rs.400.80	Buy between Rs.400 and Rs.380	Rs.370	Rs.520
ITC	Rs.170.15	Buy between Rs.160 and Rs.170.	Rs.155	Rs.210
RENUKA SUGAR	Rs.563.00	Sell between Rs.565 and Rs.585	Rs.605	Rs.460
NALCO	Rs.251.80	Sell between Rs.252 and Rs.265	Rs.273	Rs.210

COLGATE.



ITC.



SHREE RENUKA SUGER



NALCO.



Note:

- Short-term trading on the basis of technical is a high risk and skill oriented venture and may result in huge losses also. Traders doing so are doing at their own risk. We are not responsible for any damages.
- Mostly it is not advisable to buy/sell a stock if it touches the target price first and then comes within recommended range of buy/sell.
- Never wait for actual target to be reached book profits slightly before target price.

Call Tracker:

Scrip	Original Call	Change in Call	Amount Profit/(Loss)	% Gain Loss
TV 18	Buy between Rs.820 and Rs.840. SL-Rs.800. TGT-Rs.900.	Target reached.	+Rs.70.	+7.38%
Crompton Greaves.	Buy between Rs.215 and Rs.225. SL-Rs.205. TGT-Rs.250.	Target reached.	+Rs.30	+13.63%
KPIT Info.	Buy between Rs. 143 and Rs.146. SL-Rs.137. TGT-Rs.165.	Close trade.	-	-
IDFC	Buy between Rs.112 and Rs.115. SL-Rs.110. TGT-Rs.125.	Close trade.	-	-
SBIN	Buy between Rs.1280 and Rs.1300.SL-Rs.1260 TGT-Rs.1360	Not Triggered.		
TCS	Sell between Rs.1235 and Rs.1245. SL-Rs.1270 TGT-Rs.1165	Target reached.	+Rs.75	+6.04%
Zee.	Buy between Rs. 310 and Rs.315. SL-Rs.295 TGT-Rs.355	SL Hit.	-Rs.17	-5.44%
HLL	Buy between Rs.200 and Rs. 203. SL-Rs.195 TGT-Rs.219	SL Hit.	-Rs.6.50	-3.22%
BHARTIARTL	Sell between Rs.825 and Rs.830. SL-Rs.840 TGT-Rs.770	-	-	-
TATAMOTORS	Sell between Rs.670 and Rs.680. SL-Rs.695 TGT-Rs.600	-	-	-
LT	Sell between Rs.1920 and Rs.1940. SL-Rs.1980 TGT-Rs.1800	-	-	-
HINDALCO	Buy between Rs.150-Rs.155. SL-Rs.145 TGT-Rs.175	-	-	-
NICOLASPIRMAL	Buy between rs.290 and Rs.295. SL-Rs.275 TGT-Rs.329	Book profits.	-	-
RELIANCE CAPITAL	Buy between Rs.980 and Rs.1000. SL-Rs.960 TGT-Rs.1050	Not triggered.	-	-
KOTAKBANK	Sell between Rs.570 and Rs.580. SL-Rs.590 TGT-Rs.545	SL-Hit.	-	-
GUJ.AMB CEMENT	Sell between Rs.112 and Rs.115.SL-Rs.118 TGT-Rs.104	Close trade.	-	-
ITC	Buy between Rs.320 and Rs.330. SL-Rs.315. TGT-Rs.360	-	-	-
HINDLEVER	Buy between Rs.190 and Rs.192. SL-Rs.187 TGT-Rs.200	SL-Hit.	-	-
PARSVNATH	Buy between Rs.336 and Rs.340 SL-Rs.331 TGT-Rs.354	SL-Hit	-	-
PATELENGG	Buy between Rs.410 and Rs.412 SL-Rs.402 TGT-Rs.438	Target reached.	-	-
IVRCL	Buy between Rs.345 and Rs.355 SL-Rs.340 TGT-Rs.385	Not triggered.	-	-
GOKALDAS EXPO	Buy between Rs.235 and Rs.240 SL-Rs.230 TGT-Rs.260	Target reached.	-	-
ASHOK LEYLAND	Buy between Rs.37.50 and Rs.39 SL-Rs.35 TGT-Rs.45	-	-	-
BOMBAY DYEING	Buy between Rs.560 and Rs.570. SL-Rs.550 TGT-Rs.610	Not triggered.	-	-
KTK BANK	Buy between Rs.170 and Rs.172. SL-Rs.168 TGT-Rs.180	Target reached.	-	-
TATA STEEL	Buy between Rs.605 and Rs.615. SL-Rs.600 TGT-Rs.645	Not triggered.	-	-
TCS	Buy between Rs.1145 and Rs.1155. SL-Rs.1135 TGT-Rs.1200	SL-Hit.	-	-
JSW STEEL	Buy between Rs.610 and Rs.625 SL-Rs.600 TGT-Rs.660	Not triggered.	-	-
GLENMARK	Buy between Rs.700 and Rs.710 SL- Rs.685,TGT – Rs.745.	CLOSE TRADE.	-	-
RELIANCE	Buy between Rs.1752 and Rs.1772, SL – Rs.1740 , TGT –Rs.1840.	Target reached.	-	-
HDFCBANK	Buy between Rs.1200 and Rs.1228 , SL –Rs.1185 ,TGT –Rs.1280.	SL-HIT.	-	-
APOLLOTYRE	Buy between Rs.365 and Rs.375 , SL –Rs.350. TGT –Rs.410.	BOOK PROFITS.	-	-
NEYVILI LIGNITE.	Buy betweenRs.82 and Rs.84 , SL - Rs.80. TGT –Rs.92	SL-HIT.	-	-
SHREE CEMENT.	Buy between Rs.1440 and Rs.1460. SL-Rs1420. TGT –Rs.1520.	SL-HIT.	-	-
VOLTAS.	Buy between Rs.140 and Rs.145. SL – Rs.137.50. TGT –Rs.160.	SL-HIT.	-	-
MRPL.	Buy between Rs.42 and Rs.44.SL –Rs. Rs.40. TGT –Rs.52.	CLOSE TRADE.	-	-

Call Tracker:

Scrip	Original Call Details	Fresh Call
A.C.C.	Sell between Rs.1030 and Rs1050, SL–Rs.1065, TGT–Rs.960	SL HIT.
RELIANCE IND.	Sell between Rs.1930 and Rs1950, SL–Rs.1975 TGT–1860	-
STATE BANK.	Sell between Rs.1530 and Rs1550, SL–Rs.1570, TGT–Rs.1450	SL HIT
BATA.INDIA.	Sell between Rs.167.50 and Rs.172.50, SL – Rs.175, TGT–Rs.155	TARGET REACHED.
DABUR.	Buy between Rs.100 and Rs102. SL –Rs.98 , TGT –Rs.108.	-

Note:

- Short-term trading on the basis of technical is a high risk and skill oriented venture and may result in huge losses also. Traders doing so are doing at their own risk. We are not responsible for any damages.
- Mostly it is not advisable to buy/sell a stock if it touches the target price first and then comes within recommended range of buy/sell.
- Never wait for actual target to be reached book profits slightly before target price, if prices show sluggishness. Always follow stop losses to avoid larger losses.

Support Resistance – Nifty 50

Name	Close	R 2	R1	Pivot Point	S 1	S 2
ABB	1100.2	1129.07	1114.63	1104.97	1090.53	1080.87
ACC	1004.35	1036.78	1020.57	1007.78	991.57	978.78
AMBUJACEM	129.05	133.68	131.37	129.68	127.37	125.68
BAJAJAUTO	2327.8	2365.93	2346.87	2320.93	2301.87	2275.93
BHARTIARTL	872.6	896.20	884.40	876.20	864.40	856.20
BHEL	1723.05	1770.35	1746.70	1728.35	1704.70	1686.35
BPCL	308.05	314.02	311.03	307.52	304.53	301.02
CIPLA	187.15	189.92	188.53	186.42	185.03	182.92
DABUR	101	103.87	102.43	101.52	100.08	99.17
DRREDDY	623.15	647.72	635.43	627.72	615.43	607.72
GAIL	329.5	337.13	333.32	329.18	325.37	321.23
GRASIM	2962.95	3026.05	2994.50	2948.25	2916.70	2870.45
HCLTECH	298.35	306.28	302.32	298.53	294.57	290.78
HDFC	1989.55	2080.52	2035.03	1993.52	1948.03	1906.52
HDFCBANK	1155	1185.00	1170.00	1154.00	1139.00	1123.00
HEROHONDA	655.45	676.48	665.97	655.48	644.97	634.48
HINDALCO	162.6	165.10	163.85	162.05	160.80	159.00
HINDPETRO	248.1	251.57	249.83	248.27	246.53	244.97
HINDUNILVR	205.4	208.30	206.85	204.55	203.10	200.80
ICICIBANK	915.5	927.83	921.67	913.83	907.67	899.83
INFOSYSTCH	1916.65	1938.48	1927.57	1912.78	1901.87	1887.08
IPCL	358.5	366.83	362.67	359.83	355.67	352.83
ITC	169.75	174.68	172.22	170.23	167.77	165.78
LT	2520.15	2569.35	2544.75	2527.40	2502.80	2485.45
M&M	678.35	707.72	693.03	684.02	669.33	660.32
MARUTI	850.65	872.35	861.50	845.15	834.30	817.95
MTNL	143.1	149.00	146.05	144.05	141.10	139.10
NATIONALUM	300.45	309.35	304.90	300.35	295.90	291.35
NATIONALUM	251.75	257.25	254.50	252.25	249.50	247.25
ONGC	884.4	897.13	890.77	883.58	877.22	870.03
PNB	498.8	514.87	506.83	501.47	493.43	488.07
RANBAXY	366.05	387.32	376.68	369.37	358.73	351.42
RCOM	548	561.93	554.97	546.93	539.97	531.93
REL	755	783.67	769.33	759.67	745.33	735.67
RELIANCE	1801.15	1855.05	1828.10	1811.85	1784.90	1768.65
RPL	113.15	115.95	114.55	112.40	111.00	108.85
SAIL	148.55	152.38	150.47	147.78	145.87	143.18
SATYAMCOMP	472.5	479.43	475.97	471.73	468.27	464.03
SBIN	1635.75	1675.12	1655.43	1632.72	1613.03	1590.32
SIEMENS	1255.15	1291.72	1273.43	1241.72	1223.43	1191.72
STER	630.9	661.57	646.23	623.67	608.33	585.77
SUNPHARMA	926.3	954.07	940.18	922.12	908.23	890.17
SUZLON	1243.1	1270.13	1256.62	1243.48	1229.97	1216.83
TATAMOTORS	656.35	680.62	668.48	660.87	648.73	641.12
TATAPOWER	696.25	723.35	709.80	701.40	687.85	679.45
TATASTEEL	652.35	663.85	658.10	649.05	643.30	634.25
TCS	1096.9	1128.90	1112.90	1098.00	1082.00	1067.10
VSNL	452.75	465.45	459.10	451.55	445.20	437.65
WIPRO	470.2	527.90	499.05	481.05	452.20	434.20
ZEEL	312.05	319.92	315.98	313.02	309.08	306.12

Research Team

D. D. Sharma - Head
ddsharma@rathi.com

Pramit Sabharwal
Sr. Technical Analyst /
Sr. Derivative Analyst
pramitsabharwal@rathi.com

A. K. Prabhakar
Sr. Technical Analyst
Prabhakar@rathi.com

Rajesh Satpute
Sr. Technical Analyst
rajesh.satpute@rathi.com

Shishir Kedia
Technical Analyst
shishirkedia@rathi.com

Pivot Point: An Intra- Day Trading tool. PP: Pivot Point: This is trigger point for Intra Day buy/sell based on the price range of the previous day. R1: Resistance one: 1st Resistance over PP. R2: Resistance two: 2nd Resistance over R1. S1: Support one: 1st support after PP. S2: Support Two: 2nd support after S1. As per the tool, the trader should take BUY position just above PP and keep the stop loss of PP and the first target would be R1. If R1 is crossed then R2 becomes the next target with the stop loss at R1. Similarly if price goes below PP, the trader should SELL and keep the PP as Stop loss and the first target would be S1. If S1 is crossed then S2 becomes the next target with the stop loss at S1. This is an intra-day tool. The key to use of this tool is the - use of suggested STOP LOSS.

P.S. In case of clarification, please feel free to email at response@rathi.com

DISCLAIMER: This report has been issued by Anand Rathi Securities Limited (ARSL), which is regulated by SEBI. The information herein was obtained from various sources; we do not guarantee its accuracy or completeness. Neither the information nor any opinion expressed constitutes an offer, or an invitation to make an offer, to buy or sell any securities, options, future or other derivatives related to such securities ("related investment"). ARS and its affiliated may trade for their own accounts as market maker/ jobber and /or arbitrageur in any securities of this issuer(s) or in related investments, and may be on the opposite side of public orders. ARS, its affiliates, directors, officers, and employees may have a long or short position in any securities of this issuer(s) or in related investment banking or other business from, any entity mentioned in this report. This research report is prepared for private circulation. It does not have regard to the specific investment objectives, financial situation and the particular needs of any specific person who may receive this report. Investors should seek financial situation and the particular needs of any specific investing in any securities or investment strategies discussed or recommended in this report and should understand that statements regarding future prospects may not be realized. Investors should note that income from such securities, if any, may fluctuate and that each security's price or value may rise or fall. Past performance is not necessarily a guide to future performance. Foreign currency rates of exchange may adversely affect the value, price or income of any security or related investment mentioned in this report.

P.S. In case of clarification or feedback, please email at arresponse@rathi.com