



Punter's Call

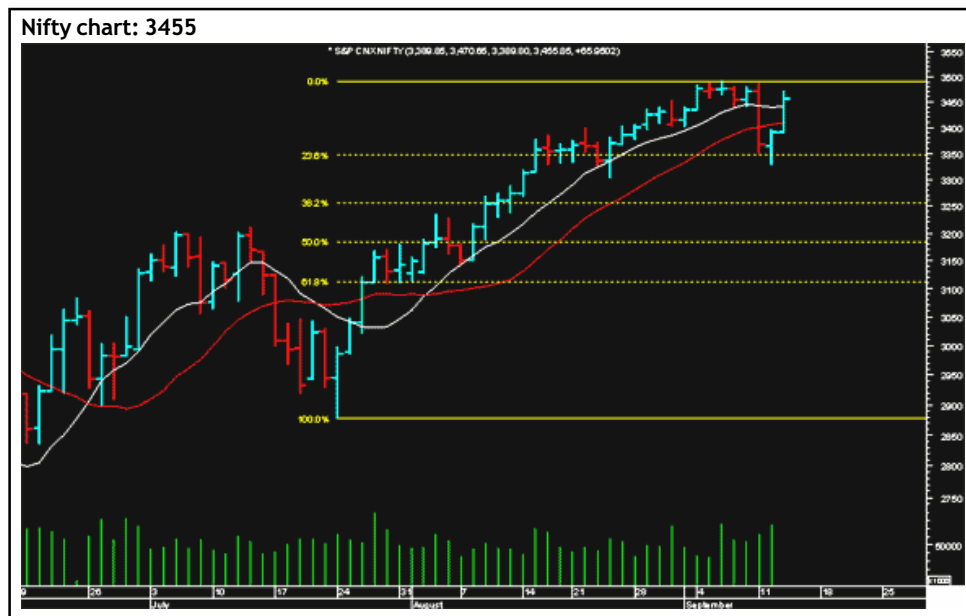
## Umove to continue

The Nifty opened on a firm note and closed the trading session well above the 10-DMA at 3441. There was a 23% retracement of the rise from 2878 to 3490 and the index took support around the retracement level at 3330 and bounced back to close above the 10-DMA. The Nifty could test higher levels around 3490 and on surpassing 3490 it could test 3520, which is the 78% retracement of the fall from 3774 to 2590. On the downside there are supports at the 10-DMA at 3441 and at the 20-DMA at 3405. As long as the index is above 3405, the short-term bias is up.

Reliance Industries could test Rs1,140 and it has a support at Rs1,100. Suzlon looks good above Rs1,155 and on the upside it could test Rs1,185. The stock has a support at Rs1,140. ACC has a support at Rs922 and it faces a resistance at Rs955.

### Market Breadth

	BSE	NSE
Advances	1,702	1,022
Declines	812	238
Unchanged	68	23



## Short Term Trend

	Target	Trend	Reversal	Support/Resistance
Short term (Nifty)	3490	↑	Down below 3405	3405 / 3490

### Icon guide

↑ Up	↓ Down	↘ Downswing matures	↗ Upswing matures
------	--------	---------------------	-------------------

## Medium Term Trend

	Target	Trend	Reversal	Support/Resistance
Medium term (Nifty)	3520	↑	Down below 3350	3350 / 3520

### Icon guide

↑ Up	↓ Down	↘ Downswing matures	↗ Upswing matures
------	--------	---------------------	-------------------

## Smart Charts



### Bharti-Buy

CMP: Rs436.6

Buy Bharti at the current market price of Rs436.6 with a stop loss of Rs389.4 for targets of Rs510 and Rs540.

Smart Charts > Open Long Calls

Date	Recommendation	Stop Loss/ Reversal (Intra-day)	Stop Loss/ Reversal (Closing)	Buy Price	Closing Price	Potential % P/L at CMP	Targets
13-09-06	Bharti	-	389.4	436.6	443	1%	510-540
08-09-06	Jindal Saw	-	294.4	323	308	-5%	379
08-09-06	LIC Housing Finance	-	153.0	166	160	-4%	190
08-09-06	Nalco	-	198.0	214	201	-6%	250
08-09-06	Nirma	-	374.4	391.2	396	1%	424
04-09-06	Praj Industries	159.7	-	183.5	165	-10%	214
18-08-06	Bharat Forge	-	316.8	348	344	-1%	409
18-08-06	Aptech Training	-	110.0	123	116	-6%	155
10-08-06	Aftek Infosys	-	56.0	62	63	2%	80

Momentum Calls > Open Short Calls

For the short term—1 to 5 days

Stock	Product type	Action date	Stop loss	Closing Price	Target 1	Target 2
Jet Airways	Cash / Future	13-09-06	Book Profit	686	680	694
Spice Jet	Cash / Future	13-09-06	Stopped Out	46.5	51.0	53.4
Reliance Capital	Cash / Future	13-09-06	524.7	512	524	539

NOTE: Kindly note that all stop losses in Momentum Calls are on an intra-day basis.

## Trendy Levels

Sensex		Nifty	
Support	Resistance	Support	Resistance
11666	11980	3440	3475
11445	12100	3400	3490
11330	12250	3330	3520
<b>20DSMA</b>	<b>40DEMA</b>	<b>20DSMA</b>	<b>40DEMA</b>
11681	11358	3410	3319
<b>BSE Sensex: 11894</b>		<b>Nifty: 3455</b>	

## Day Trader's HIT List

For September 14, 2006

Scrip Name	Support Levels		Close (Rs)	Resistance Levels		Action
	S1	S2		R2	R1	
<b>NIFTY Futures</b>	3410	3448	<b>3458</b>	3465	3500	Go long above R2. Go short below S2.
<b>ACC</b>	920	925	<b>931</b>	940	945	Buy with a stop below S2.
<b>Century</b>	475	482	<b>486</b>	490	505	Go long above R2. Go short below S2.
<b>Hindalco</b>	166	168	<b>171</b>	174	178	Buy above R2.
<b>Infosys</b>	1785	1795	<b>1810</b>	1835	1845	Buy with a stop below S2.
<b>M &amp; M</b>	630	635	<b>640</b>	650	655	Buy with a stop below S2.
<b>Maruti</b>	942	952	<b>956</b>	960	970	Go long above R2. Go short below S2.
<b>MTNL</b>	155	157	<b>160</b>	165	170	Buy with a stop below S2.
<b>ONGC</b>	1135	1150	<b>1158</b>	1165	1180	Go long above R2. Go short below S2.
<b>Reliance</b>	1100	1108	<b>1116</b>	1130	1140	Buy with a stop below S2.
<b>Reliance Capital</b>	519	523	<b>527</b>	535	540	Buy with a stop below S2.
<b>Satyam</b>	785	795	<b>803</b>	807	815	Go long above R2. Go short below S2.
<b>SBI</b>	955	962	<b>969</b>	978	985	Buy with a stop below S2.
<b>TCS</b>	980	992	<b>997</b>	1008	1115	Buy with a stop below S2.
<b>Tisco</b>	490	493	<b>502</b>	507	511	Go short with a stop above R2.
<b>Tata Motors</b>	860	865	<b>870</b>	880	885	Buy with a stop below S2.
<b>Ranbaxy</b>	400	405	<b>412</b>	421	425	Buy with a stop below S2.
<b>VSNL</b>	390	400	<b>405</b>	410	420	Go long above R2. Go short below S2.
<b>Titan</b>	775	785	<b>791</b>	795	805	Go long above R2. Go short below S2.
<b>Wipro</b>	498	507	<b>512</b>	516	525	Go long above R2. Go short below S2.
<b>Rcom</b>	318	322	<b>324</b>	330	333	Buy with a stop below S2.

\*Note: Closing price of Nifty futures is last traded price of Nifty futures on NSE

For Private Circulation only

[Home](#)

### Disclaimer

"This document has been prepared by Sharekhan Ltd.(SHAREKHAN) This Document is subject to changes without prior notice and is intended only for the person or entity to which it is addressed to and may contain confidential and/or privileged material and is not for any type of circulation. Any review, retransmission, or any other use is prohibited. Kindly note that this document does not constitute an offer or solicitation for the purchase or sale of any financial instrument or as an official confirmation of any transaction.

Though disseminated to all the customers simultaneously, not all customers may receive this report at the same time. SHAREKHAN will not treat recipients as customers by virtue of their receiving this report.

The information contained herein is from publicly available data or other sources believed to be reliable. While we would endeavour to update the information herein on reasonable basis, SHAREKHAN, its subsidiaries and associated companies, their directors and employees ("SHAREKHAN and affiliates") are under no obligation to update or keep the information current. Also, there may be regulatory, compliance, or other reasons that may prevent SHAREKHAN and affiliates from doing so. We do not represent that information contained herein is accurate or complete and it should not be relied upon as such. This document is prepared for assistance only and is not intended to be and must not be taken as the basis for an investment decision. The user assumes the entire risk of any use made of this information. Each recipient of this document should make such investigations as it deems necessary to arrive at an independent evaluation of an investment in the securities of companies referred to in this document (including the merits and risks involved), and should consult its own advisors to determine the merits and risks of such an investment. The investment discussed or views expressed may not be suitable for all investors. We do not undertake to advise you as to any change of our views. Affiliates of Sharekhan may have issued other reports that are inconsistent with and reach different conclusion from the information presented in this report.

This report is not directed or intended for distribution to, or use by, any person or entity who is a citizen or resident of or located in any locality, state, country or other jurisdiction, where such distribution, publication, availability or use would be contrary to law, regulation or which would subject SHAREKHAN and affiliates to any registration or licensing requirement within such jurisdiction. The securities described herein may or may not be eligible for sale in all jurisdictions or to certain category of investors. Persons in whose possession this document may come are required to inform themselves of and to observe such restriction.

SHAREKHAN & affiliates may have used the information set forth herein before publication and may have positions in, may from time to time purchase or sell or may be materially interested in any of the securities mentioned or related securities. SHAREKHAN may from time to time solicit from, or perform investment banking, or other services for, any company mentioned herein. Without limiting any of the foregoing, in no event shall SHAREKHAN, any of its affiliates or any third party involved in, or related to, computing or compiling the information have any liability for any damages of any kind. Any comments or statements made herein are those of the analyst and do not necessarily reflect those of SHAREKHAN."