

February 23, 2007

FOR PRIVATE CIRCULATION

**Shrikant Chouhan**  
shrikant.chouhan@kotak.com  
+9122 66341439

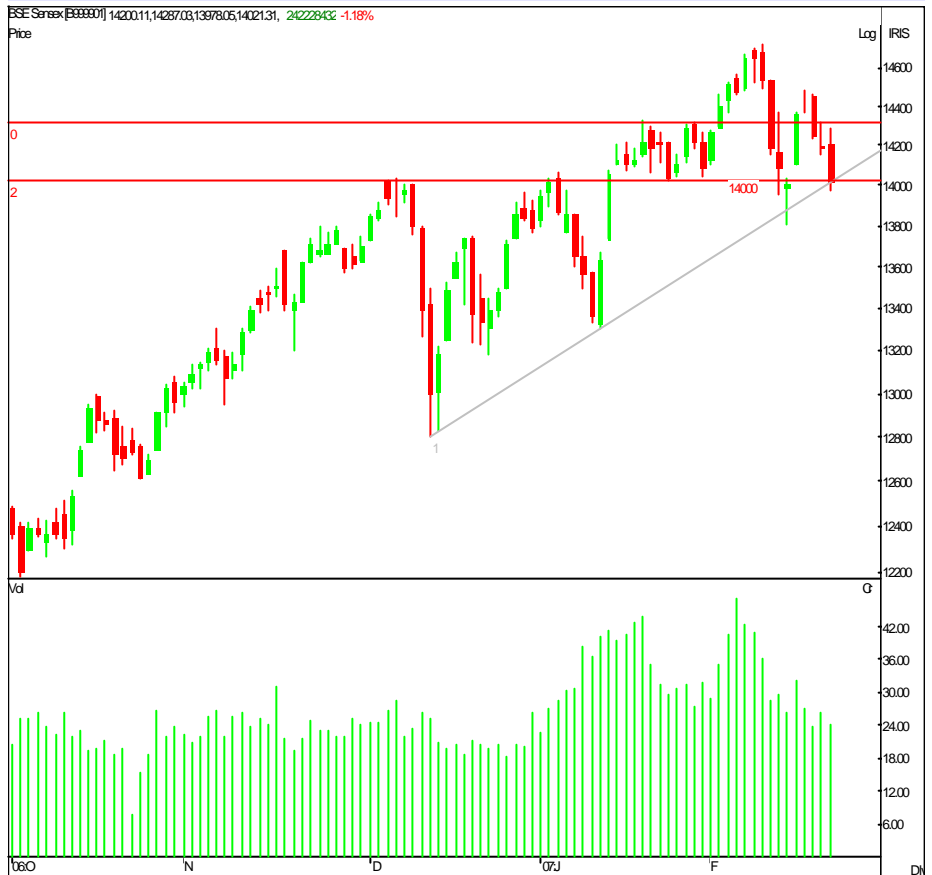
## Index view

**The markets on 22 Feb:**  
Continuation of bear trend.

**LOOKING AHEAD:** The market has next major support between the range of 13900 and 13800 (3900/3965 nifty). A sustenance and reversal from these levels would be an opportunity to enter in selective stocks with the trading view in mind.

We might see range bound movement between the broader range of 500 points on Sensex, (200 points for the Nifty). The strategy should be buy at lower band of the range and selling at the higher band of the range. Keep on reducing leveraged long positions.

### BSE daily chart



#### Index range

**NIFTY : 4040**

Range : 3980-4150  
Resistance : 4055-4090-4115-4135  
Support : 4015-3980-3965-3920

**Sensex : 14021**

Range : 13950-14375  
Resistance : 14225-14350-14500-14650  
Support : 13950-13800-13725-13650

### Trading calls

Stock	Recommendation
-------	----------------

NIL

*These trading calls are based on cash but clients can trade in futures also with the support of the above mentioned prices.*

## Trading Tool

Stock	Extreme	Probable	Achievable	Closings	Achievable	Probable	Extreme	Final Stop Loss
NIFTY (MAR-F)	4006	4025	4037	4062	4087	4099	4118	4053
RELIANCE	1358	1375	1395	1412	1429	1449	1466	1401
SAIL	107.5	109.9	111.0	113.15	115.3	116.4	118.8	111
TISCO	438	443	449	455	461	467	472	435
HDFC	1599	1621	1641	1662	1683	1703	1725	1650
ONGC	822	833	844	855	866	877	888	851
HERO HONDA	689	697	707	716	725	735	743	710
BAJAJ AUTO	2797	2832	2872	2908	2944	2984	3019	2875
M&M	840	850	862	873	884	896	906	865
MARUTI	846	857	869	880	891	903	914	890
TELCO	803	813	825	835	845	857	867	828
REL CAPITAL	641	653	658	666	674	691	707	664
TECH MAHIND	1589	1617	1647	1681	1702	1745	1799	1635
TITAN	888	899	910	925	936	960	990	920
VSNL	395	400	406	411	416	422	440	408
PUNJ LLOYD	836	846	869	891	913	925	946	888
L&T	1552	1611	1634	1654	1674	1697	1756	1635
SBIN	1024	1050	1065	1078	1091	1106	1132	1070
PNB	407	425	434	447	460	469	487	440
HCL TECH	655	667	673	681	689	695	707	675
INFOSYS	2201	2242	2260	2288	2316	2334	2375	2270
SATYAM	441	450	453	459	465	468	477	455
TCS	1245	1268	1278	1294	1310	1320	1343	1285
WIPRO	625	637	642	650	658	663	675	640
ACC	923	941	948	960	972	979	997	945
GACL	118.2	119.7	122.9	126	129.2	130.8	133.8	125
GRASIM	2329	2373	2391	2421	2451	2469	2513	2390
BHEL	2205	2247	2265	2293	2321	2339	2381	2280
REL	493	503	507	513	519	523	533	510
NTPC	135.9	138.9	140.3	143	145.7	147.1	150.2	140
TATAPOWER	573	584	589	596	603	608	619	590

- Achievable** = which is achievable if the stock trades above or below the closing price. (Trade as per the trend of the market)
- Probable** = which is probably achievable if the stock trades above or below the closing price.  
(If the prevailing trend of the market is in force)
- Extreme** = Here traders can go short (higher side) or long (lower side) with minimal stop loss.

### Research Team

Name	Sector	Tel No	E-mail id
Dipen Shah	IT, Media, Telecom	+91 22 6634 1376	dipen.shah@kotak.com
Sanjeev Zarbade	Capital Goods, Engineering	+91 22 6634 1258	sanjeev.zarbade@kotak.com
Teena Virmani	Construction, Cement, Mid Cap	+91 22 6634 1237	teena.virmani@kotak.com
Awadhesh Garg	Pharmaceuticals	+91 22 6634 1406	awadhesh.garg@kotak.com
Apurva Doshi	Logistics, Textiles, Mid Cap	+91 22 6634 1366	doshi.apurva@kotak.com
Saurabh Gurnurkar	IT, Media, Telecom	+91 22 6634 1273	saurabh.gurnurkar@kotak.com
Vinay Goenka	Auto, Auto Ancillary, Sugar	+91 22 6634 1291	vinay.goenka@kotak.com
Saday Sinha	Economy, Banking	+91 22 6634 1440	saday.sinha@kotak.com
Lokendra Kumar	Oil & Gas	+91 22 6634 1540	lokendra.kumar@kotak.com
Shrikant Chouhan	Technical analyst	+91 22 6634 1439	shrikant.chouhan@kotak.com
Kaustav Ray	Editor	+91 22 6634 1223	kaustav.ray@kotak.com
K. Kathirvelu	Production	+91 22 6634 1557	k.kathirvelu@kotak.com

### Disclaimer

This document is not for public distribution and has been furnished to you solely for your information and must not be reproduced or redistributed to any other person. Persons into whose possession this document may come are required to observe these restrictions.

This material is for the personal information of the authorized recipient, and we are not soliciting any action based upon it. This report is not to be construed as an offer to sell or the solicitation of an offer to buy any security in any jurisdiction where such an offer or solicitation would be illegal. It is for the general information of clients of Kotak Securities Ltd. It does not constitute a personal recommendation or take into account the particular investment objectives, financial situations, or needs of individual clients.

We have reviewed the report, and in so far as it includes current or historical information, it is believed to be reliable though its accuracy or completeness cannot be guaranteed. Neither Kotak Securities Limited, nor any person connected with it, accepts any liability arising from the use of this document. The recipients of this material should rely on their own investigations and take their own professional advice. Price and value of the investments referred to in this material may go up or down. Past performance is not a guide for future performance. Certain transactions -including those involving futures, options and other derivatives as well as non-investment grade securities - involve substantial risk and are not suitable for all investors. Reports based on technical analysis centers on studying charts of a stock's price movement and trading volume, as opposed to focusing on a company's fundamentals and as such, may not match with a report on a company's fundamentals.

Opinions expressed are our current opinions as of the date appearing on this material only. While we endeavor to update on a reasonable basis the information discussed in this material, there may be regulatory, compliance, or other reasons that prevent us from doing so. Prospective investors and others are cautioned that any forward-looking statements are not predictions and may be subject to change without notice. Our proprietary trading and investment businesses may make investment decisions that are inconsistent with the recommendations expressed herein.

Kotak Securities Limited has two independent equity research groups: Institutional Equities and Private Client Group. This report has been prepared by the Private Client Group. The views and opinions expressed in this document may or may not match or may be contrary with the views, estimates, rating, target price of the Institutional Equities Research Group of Kotak Securities Limited.

We and our affiliates, officers, directors, and employees world wide may: (a) from time to time, have long or short positions in, and buy or sell the securities thereof, of company (ies) mentioned herein or (b) be engaged in any other transaction involving such securities and earn brokerage or other compensation or act as a market maker in the financial instruments of the company (ies) discussed herein or act as advisor or lender / borrower to such company (ies) or have other potential conflict of interest with respect to any recommendation and related information and opinions.

The analyst for this report certifies that all of the views expressed in this report accurately reflect his or her personal views about the subject company or companies and its or their securities, and no part of his or her compensation was, is or will be, directly or indirectly related to specific recommendations or views expressed in this report.

No part of this material may be duplicated in any form and/or redistributed without Kotak Securities' prior written consent.