



12 JAN 2010

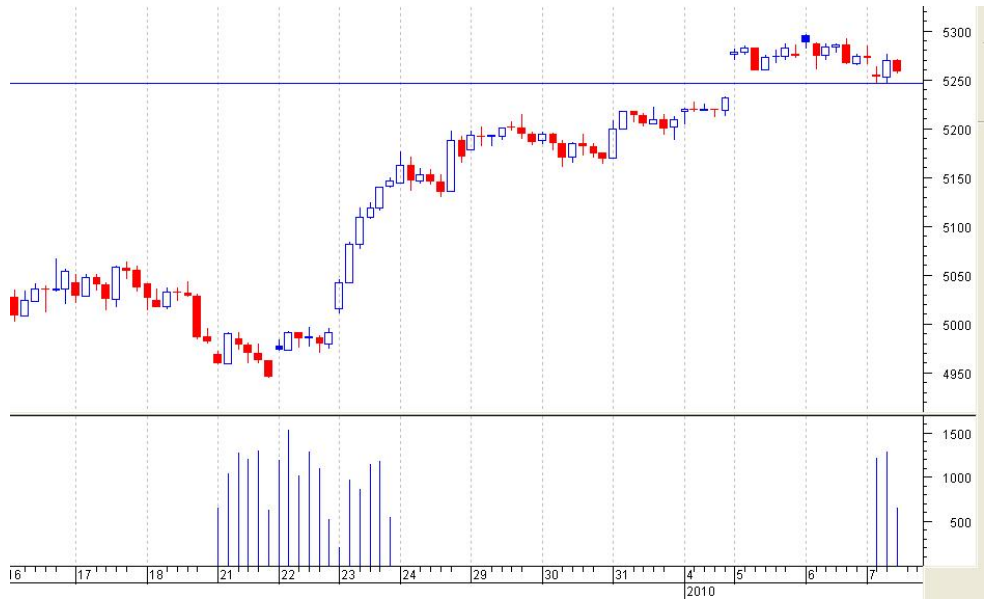
Market Data (5P.M IST)

Index	Close	Point Change	% age Change
BSE Sensex	17526	-13	-0.08%
NSE Nifty	5249	+4	+0.09%
S&P 500	1144	+3	+0.29%
Dow Jones	10618	+11	+0.11
NASDAQ	2317	+17	+0.74%
FTSE	5585	+51	+0.93%

CONTACT PERSON:

PERVEZ DANISH

NIFTY DAILY WATCH



DAILY NIFTY CHART:

	LTP	S3	S2	S1	R1	R2	R3
NIFTY	5249	5160	5210	5230	5293	5310	5350
SENSEX	17526	16190	17320	17500	17790	17940	18000

COMMENTARY:

Indian market traded positive in the earlier hours but remain flattish in the last two hours of the session. Metals, Reality and PSU stocks attracted major buying interest while Oil-Gas stood weak. SENSEX closed at 17526, down 13 points and Nifty at 5249, up 4 points from the previous close. CNX MIDCAP index was up 0.94% and BSE SMALLCAP index was up 1.80%. Top gainers included TCS, JPASSOCIATE, DLF, GRASIM, BHARTIARTL, PNB, ABB and AXISBANK. Top losers are listed as RIL, BHEL, WIPRO, SBIN, HINDALCO and CAIRN.

NEXT SESSION.....

In the next session market sentiments may be affected by INFOSYS results. Traders are suggested to keep eye on NIFTY strong support 5210 and resistance 5310. We expect TELECOM, CEMENT and AUTO sector to perform well.

EXPECTED BULLISH STOCKS:

NTPC, NMDC, TATASTEEL, ACC, GRASIM, MADRASCEM, PANTALOONR, ABB, HDFC, INFOSYSTCH, TCS, NEYVELILIGNITE, DLF, HDIL, UNITECH, SUZLON, PNB, BOB.

EXPECTED BEARISH STOCKS:

SBIN, TATAMOTORS, BHEL, ICICIBANK, SUNPHARMA, STER, NALCO, PTC, RIL, LUPIN.

NIFTY AND BANK NIFTY FUTURE:

Again, NIFTY may face selling pressure at higher levels.

SELL NIFTY FUTURE AT GAINS WITH CLOSE STOPLOSS 5310 FOR TARGET 5230 AND 5210.

BANK NIFTY FUTURE HAS A STRONG RESISTANCE NEAR 9250-80. AND SUPPORT NEAR 9120. It is expected to trade in a range

INTRADAY TRADING STRATEGY.

SL No	TRADE BUY/SELL	SCRIP SYMBOL	ENTER	STOP LOSS	TARGET
1.	BUY	PURVA	ABOVE 106.50	BELOW 103	110-114- 119
2.	BUY	NEYVELILIG	ABOVE 169	BELOW 164	175-180- 184
3.	BUY	PANTALOON R	ABOVE 431	ABOVE 423	440-450- 460

F&O INTRADAY TRADING STRATEGY.

SL No	TRADE BUY/SELL	SCRIP SYMBOL	ENTER	STOP LOSS	TARGET
1.	BUY	TCS FUT	ABOVE 725	BELOW 718	731-740- 745
3.	BUY	INFOSYSTC H FUT	ABOVE 2510	BELOW 2487	2530- 2542- 2556

FOLLOW UPS.

SOBHA BUY CALL GIVEN ABOVE 279 TGT 290-300 MADE A HIGH 292.

MARUTI FUT BUY CALL GIVEN ABOVE 1446 TGT 1470 MADE A HIGH 1468.

HDFC FUT SELL CALL GIVEN BELOW 2600 TGT 2585 MADE A LOW 2586.

BHEL FUT BUY CALL GIVEN ABOVE 2436 TGT 2455 MADE HIGH 2452 BUT OPENED AT 2444 CALL CONSIDERED AS IGNORED.

NEYVELI LIGNITE BUY CALL GIVEN ABOVE 168 CLOSED NEAR BUYING PRICE.

NOTE: ** FOLLOW ALL CALLS AFTER 2-3 MINUTES FROM OPENING BELL.

****TRADERS ARE SUGGESTED TO FOLLOW STRICTLY THE STOP LOSS GIVEN IN EACH CALL.**

The document is for information purposes only and ought to be construed as an advice on investment or any daily news letter: daily report other subject, neither be construed as an offer or solicitation for the purchase and sale. It is based on information available in the public domain and compiled from the sources believed to be reliable, though we have presentation to effect and opinions given herein based on such information ought to be taken in this background. For the information, statements and opinions given, made or expressed herein or from any omission here from, neither Fairwealth Securities Pvt. Ltd., its directors, officers, employees, subsidiaries, affiliates and accept any responsibility of whatsoever nature, nor shall they be held liable in any manner for the consequence of any action taken by you based on the information opinion contained herein. You are advised to take informed decisions in consultation with an independent advisor. Fairwealth Securities Pvt. Ltd., its directors, officers, employees, subsidiaries, affiliates and associates may have a position in any of the equities cash & futures mentioned in this report.

FAIRWEALTH SECURITIES

WWW.FAIRWEALTH.IN