



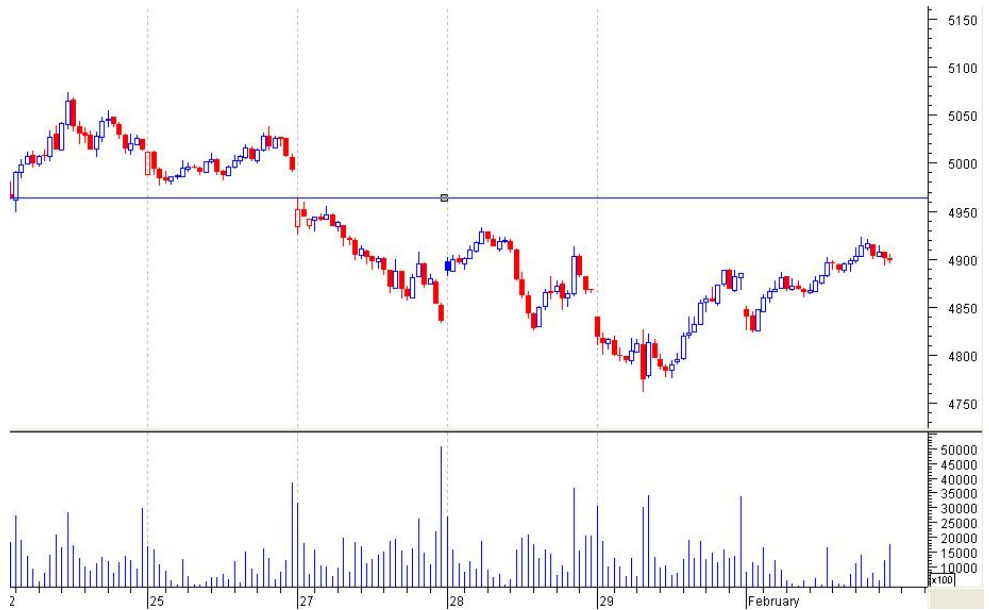
2<sup>nd</sup> FEB 2010

**Market Data ( 5P.M IST)**

Index	Close	Point Change	% age Change
BSE Sensex	16356	-1.9	-0.01%
NSE Nifty	4899	+17.6	+0.36%
S&P 500	1073	-10	-0.98%
Dow Jones	10067	-53	-0.52%
NASDAQ	2147	-31	-1.45%
FTSE	5199	+11	+0.22

CONTACT PERSON:  
PERVEZ DANISH

**NIFTY DAILY WATCH**



**DAILY NIFTY CHART:**

	LTP	S3	S2	S1	R1	R2	R3
<b>NIFTY</b>	4899	4744	4815	4854	4933	4964	5026
<b>SENSEX</b>	16356	15800	16140	16240	16430	16710	16880

**COMMENTARY:**

Indian market opened weak but recovered later and moved in the positive zone. After trading in a choppy session, SENSEX closed at 16356, down 1 point and Nifty at 4899, up 17 points from the previous close. CNX MIDCAP index was up 1.93% and BSE SMALLCAP index was up 2.72%. IT and BANKING STOCKS faced major profit booking in the later session. Top gainers included WIPRO, TCS, TATAMOTORS, GRASIM, M&M, GAIL, IDEA, BPCL and JINDALSTEL while top losers are listed as HUL, SBIN, NTPC, ITC, TATAPOWER, RELCAPITAL, HDFCBANK, and NTPC.

**NEXT SESSION.....**

In the next session we expect selling pressure at higher levels. BANKING STOCKS may face major selling at higher levels. TRADERS are suggested to follow the strategy of selling at higher levels and be cautious in long positions. NIFTY has resistance at 4964 and support at 4850 and 4815. It is suggested to exit from all long positions if nifty trades below 4744 level.

**EXPECTED BULLISH STOCKS:**

ACC, GRASIM, MARUTI, PNB, PIRHEALTH, IDEA, PUNJLLOYD, ONGC, GAIL, HINDALCO, SIEMENS, SUZLON, RECLTD, PFC, DIVISLAB, LUPIN, BEML, BHEL, RELIANCE, TITAN.

**EXPECTED BEARISH STOCKS:**

ICICIBANK, RELCAPITAL, SBIN, FINANTECH, PATNI, WIPRO, JINDALSTEEL, MAX, BAJAJ-AUTO, HDFCBANK, HUL, MTNL.

**NIFTY AND BANK NIFTY FUTURE:**

**SELL NIFTY FUT BELOW 4846 SL 4886.10 TGT 4815-4785-4755.**

**SELL BANK NIFTY FUT BELOW 8555 SL 8610.10 TGT 8500-8460-8380**

**INTRADAY TRADING STRATEGY.**

SL No	TRADE BUY/SELL	SCRIP SYMBOL	ENTER	STOP LOSS	TARGET
1.	BUY	RECLTD	ABOVE 249	244.90	254-260-264.
2.	SELL	RELCAPITAL	780	790.10	771-766-752
3.	BUY	FORTIS	ABOVE 150	BELOW 145	155-160-165

**F&O INTRADAY TRADING STRATEGY.**

SL No	TRADE BUY/SELL	SCRIP SYMBOL	ENTER	STOP LOSS	TARGET
1.	BUY	GRASIM FUT	ABOVE 2664	BELOW 2630	2697-2729-2747
2.	SELL	ICICIBANK FUT	BELOW 823	831.10	817-812-805
3.	SELL	BHEL FUT	BELOW 2372	2400.10	2348-2330-2295.

**FOLLOW UPS.**

ROLTA BUY CALL GIVEN ABOVE 210 TGT 222 STOPLOSS TRIGGERED.

MAX , BOB, PNB FUT CALL NOT EXECUTED.

MARUTI FUT BUY CALL GIVEN ABOVE 1398 TGT 1414 ACHIEVED.

ICICIBANK SELL CALL GIVEN BELOW 824 TGT 817-812 OPENED NEAR TARGET; CALL AVOIDED.

**NOTE: \*\* FOLLOW ALL CALLS AFTER 2-3 MINUTES FROM OPENING BELL.**

**\*\*TRADERS ARE SUGGESTED TO FOLLOW STRICTLY THE STOP LOSS GIVEN IN EACH CALL.**

*The document is for information purposes only and ought to be constructed as an advice on investment or any daily news letter: daily report other subject, neither be construed as an offer or solicitation for the purchase and sale. It is based on information available in the public domain and compiled from the sources believed to be reliable, though we have presentation to effect and opinions given herein based on such information ought to be taken in this background. For the information, statements and opinions given, made or expressed herein or from any omission here from, neither Fairwealth Securities Pvt. Ltd., its directors, officers, employees, subsidiaries, affiliates and accept any responsibility of whatsoever nature, nor shall they be held liable in any manner for the consequence of any action taken by you based on the information opinion contained herein. You are advised to take informed decisions in consultation with an independent advisor. Fairwealth Securities Pvt. Ltd., its directors, officers, employees, subsidiaries, affiliates and associates may have a position in any of the equities cash & futures mentioned in this report.*

**FAIRWEALTH SECURITIES**

**WWW.FAIRWEALTH.IN**