

DAILY ROUND-UP

For Private Circulation Only

TUESDAY | FEBRUARY 02, 2010

Phone : +91 33 2359 4612
 +91 33 2359 4614
 +91 33 2358 1953
 E-mail : research@shriraminsight.com



Shriram Market Analysis
 & Research Team

Indian Market

INDICES	Close	Previous
S&P CNX Nifty	4899.7	4882.05
SENSEX	16356.03	16357.96

Sectoral Indices

INDICES	Close	Previous
BSE IT	4976.49	4977.71
BSE BANK	9652.77	9654.09
BSE FMCG	2707.48	2725.38
BSE PSU	9538.67	9473.93
BSE METAL	16217.4	15962.05

Asian Market

INDICES	Close	Previous
Nikkei225	10205.02	10198.04
HangSeng	20243.75	20121.99
StraitTimes	2736.17	2745.35
Shanghai	2941.36	2989.29
Kospi	1606.44	1602.43

Exchange Turnover (Rs. in Crore)

INDICES	Current	Previous
NSE Cash	14757.48	19366.47
NSE F&O	60383.27	92503.91

Previous FII Positions

ACTIVITIES	Cash	F&O
NET BUY	-	490.23
NET SELL	996.09	-

Top Gainers

SCRIP NAME	Close	Previous
BPCL	580.80	540.85
GAIL	413.00	394.05
IDEA	61.10	58.45
JINDALSTEL	653.85	627.95

Top Losers

SCRIP NAME	Close	Previous
HINDUNILVR	236.85	242.30
RELCAPITAL	789.40	805.00
HDFCBANK	1600.10	1631.05
SBIN	2019.35	2056.6

Markets opened on a negative note following weak global cues. Nifty was seen to go below the 4850 level in the opening hour as selling was witnessed in IT, Metal and banking stocks while Capital Good, Pharma stocks showed strength. Markets did test lower levels and Nifty made it's low of 4827.15 in this session but on touching the lows, markets were seen to rebound to pare early loses on the back of buying in Pharma, Capital good and PSU stocks. The Small & Midcap indices outperformed the markets. As trade continued to the late morning session, Nifty was seen to oscillate around the previous closing mark and in the early afternoon session markets managed to trade flat with positive bias on the back of buying in Consumer durables, Realty, Metal, Pharma and Auto stocks while IT, FMCG continued to be in the losing side. In the mid afternoon session Nifty went passed the 4900 level mark and was comfortably placed but in the late session markets were again seen to turn flat and finally markets did end almost flat where stocks like BPCL, GAIL, IDEA, JINDALSTEL surged higher while HINDUNILVR, RELCAPITAL, HDFCBANK, SBIN lagged behind among the Nifty stocks.

Economic News

- ❖ Crude Oil traded at US\$ 73.17 per barrel and Rupee traded at Rs.46.37 against each US\$.

Corporate News

- ❖ **IVRCL Infrastructures & Projects Ltd** (NSE : IVRCLINFRA) has bagged orders for a road project of Rs. 1125 crores.
- ❖ **Larsen & Toubro Limited** (NSE : LT) has won Rs.2155 Cr Orders from NFL for Projects in Haryana & Punjab.
- ❖ **Areva T&D India Limited** (NSE : AREVAT&D) bagged two orders aggregating Rs 110 crore from Delhi Transco for installing two 220/33 kilovolt GIS substations in Delhi.
- ❖ **Indoco Remedies Limited** (NSE : INDOCO) has entered into a business partnership with Watson Pharmaceuticals, Inc., USA to develop, manufacture and supply sterile products to Watson for the US market.
- ❖ **Abbott India Limited** (NSE : ABBOTINDIA) in its meeting on 01 February 2010 has recommended dividend at the rate of Rs. 17 per share (170%).
- ❖ **Kemrock Industries and Exports Limited** (NSE : KEMROCK) in its meeting on 30 January 2010 has declared interim dividend at the rate of Re. 1 per share (10%) for the financial year 2009-2010.

- ❖ **Amrutanjan Health Care Limited** (NSE : AMRUTANJAN) in its meeting on 30 January 2010 has declared interim dividend at the rate of Rs. 5 per share (50%)for the financial year 2009-10.
- ❖ **Aurobindo Pharma Ltd** (NSE : AUROPHARMA) in its meeting on 30 January 2010 has declared interim dividend at the rate of Rs 3 per share (60%) for the Financial Year 2009-2010.
- ❖ **Suprajit Engineering Limited** (NSE : SUPRAJIT) in its meeting on 30 January 2010 has declared interim dividend at the rate of Re 1 per share (20%) for the year 2009-10.
- ❖ **Chembond Chemicals Ltd** (BSE : 530871) has informed that the Board of Directors of the Company at its meeting held on January 30, 2010, inter alia, has recommended issue of bonus shares in the ratio of 1:1 subject to the approval of the shareholders at the ensuing Extra Ordinary General Meeting of the Company.
- ❖ **Gujarat Ambuja Exports Limited** (NSE : GAEL) in its meeting on 30 January 2010 has declared interim dividend at the rate of Re. 0.40 per share (20%) for the F.Y. 2009-10.
- ❖ **Geodesic Limited** (NSE : GEODESIC) in its meeting on 29 January 2010 has declared interim dividend at the rate of Re 0.75 per share (37.5%).

Global News

- ❖ **Euro-zone final manufacturing PMI up**
The final manufacturing PMI for the 16-nation euro zone rose to a two-year high of 52.4 in January. This final reading exceeded from 51.6 in December.
- ❖ **Australia's property price hikes**
Australia's house prices hiked last quarter which is the highest since 2003, although manufacturing expanded and inflation increased.
- ❖ **Microsoft Corp's Q2 net income at \$6.66 billion**
Microsoft Corp's Q2 net income rose to \$6.66 billion, or 74 cents a share, from \$4.17 billion or 47 cents a share on YoY basis. Revenue rose 14% to \$19.02 billion.
- ❖ **S. Korea posts trade deficit at \$470 million in Jan**
South Korea swung to a surprise trade deficit in January. Trade account registered a \$470 million deficit for the month from a surplus of \$3.09 billion in December. For January, exports rose 47.1% over the year-earlier month to total \$31.08 billion, while imports were up 26.7% at \$31.55 billion.
- ❖ **China's PMI at 55.8 in January**
A key gauge of China's manufacturing activity indicated expansion for the 11th straight month. The PMI was 55.8 for the month, compared to 56.6 in December. New export orders were at 53.2%, rising 0.6 of a percentage point from December. Input prices were at 68.5, inching up from December's 66.7, feeding concern over possible inflationary pressures.

Market Talk

L & T bags order worth Rs. 2155 crore

Larsen & Toubro (L&T) has secured two major orders worth Rs 2155 crore from National Fertilizers (NFL) for ammonia feedstock conversion projects at Panipat in Haryana and Bathinda in Punjab. The two projects involve changeover of the feedstock of the existing 900 TPD ammonia plants from fuel oil to natural gas. Both projects will be executed concurrently and are expected to be commissioned by the end of January 2013.

IVRCL Infra secures order valued at Rs. 1125 crore

IVRCL Infrastructures & Projects (IVRCL) has announced that the company has bagged Road Project of the value of Rs. 1125 crore for Six Laning from Km 102.035 to Km 144.740 on Chengapalli to Start of Coimbatore Bypass and Four Laning from Km 170.940 to Km 183.060 on End of Coimbatore Bypass to TN / Kerala Border Section of NH 47 in the State of Tamil Nadu under NHDP Phase II on DBFOT basis from National Highways Authority Of India.

Areva T&D wins orders

AREVA's Transmission and Distribution (T&D) division has recently won two major orders from the Delhi Transco (DTL) for 220/33 KV GIS Substations to be installed at Mathur Lane and AIIMS trauma Centre in Delhi Both turnkey orders include Design, Engineering, Manufacturing, Testing and Commissioning of 220/33kv Substation Packages.

Delhi Transco Limited (DTL) is the State Transmission utility for the National Capital Territory of Delhi. It is responsible for the transmission of power at 220kv and 400 KV level and for upgrading, operating and maintaining the Extra High Voltage network. The existing network of DTL consists of a 400KV ring around the periphery of Delhi interlinked with the 220KV network spread all over the city.

Result Announcement

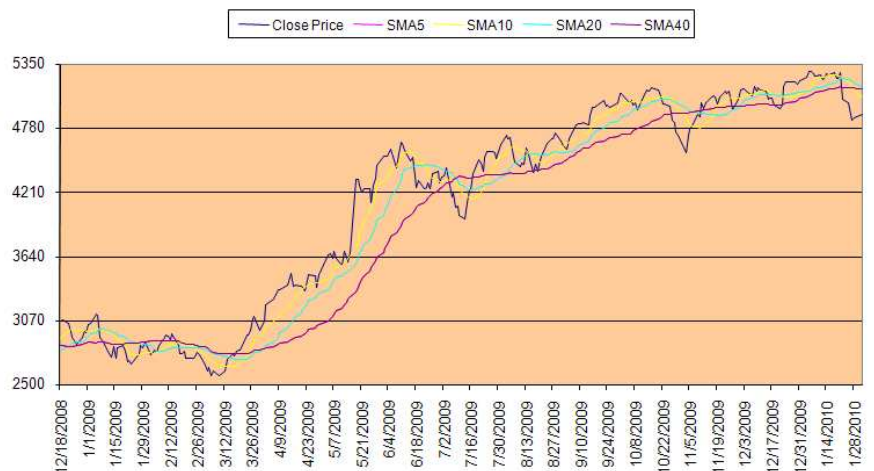
COMPANY	PERIOD	PROFIT AFTER TAX			NET SALES		
		CURR	PREV	% CHN	CURR	PREV	% CHN
Gulf Oil Corporation Limited	Q3FY10(YOY)	6.78	-5.58	221.51%	233.49	214.46	8.87%
Subhash Projects & Marketing Ltd	Q3FY10(YOY)	7.37	14.77	-50.10%	250.98	319.19	-21.37%
Kothari Products Ltd.	Q3FY10(YOY)	16.15	0.4	3937.50%	104	25.18	313.03%
Bartronics India Limited	Q3FY10(YOY)	9.9	18.48	-46.43%	145.53	92.3	57.67%
Cox And Kings (India) Limited	Q3FY10(YOY)	8.22	-	-	35.23	-	-
Panacea Biotec Ltd.	Q3FY10(YOY)	7.34	-18.87	138.90%	228.1	175.91	29.67%
Gujarat Apollo Industries Limited	Q3FY10(YOY)	8.88	5.1	74.12%	60.2	43.26	39.16%
Videocon Industries Limited	Q3FY10(YOY)	131.67	60.43	117.89%	2806.56	2074.67	35.28%
Rajesh Exports Ltd.	Q3FY10(YOY)	43.9	17.06	157.33%	4532.17	2732.32	65.87%
Parsvnath Developers Limited	Q3FY10(YOY)	32.66	5.33	512.76%	211.26	85.74	146.40%
Kiri Dyes and Chemicals Limited	Q3FY10(YOY)	4.71	2.78	69.42%	80.93	70.83	14.26%
Surya Pharmaceutical Limited	Q3FY10(YOY)	21.41	13.3	60.98%	298.08	195.45	52.51%
Amar Remedies Limited	Q3FY10(YOY)	7.3	5.54	31.77%	114.34	87.15	31.20%
Mercator Lines Limited	Q3FY10(YOY)	5.65	3.33	69.67%	133.14	295.57	-54.95%
Spice Mobiles Limited	Q3FY10(YOY)	22.4	-3.5	740.00%	299	120.73	147.66%
Gujarat Ambuja Exports Limited	Q3FY10(YOY)	10.48	-3.12	435.90%	433.48	550.98	-21.33%
Birla Corporation Ltd	Q3FY10(YOY)	112.29	81.38	37.98%	558.88	452.14	23.61%
Ashok Leyland Ltd	Q3FY10(YOY)	104.63	18.86	454.77%	1815.53	1000.84	81.40%
Bombay Rayon Fashions Limited	Q3FY10(YOY)	47.23	41.67	13.34%	417.93	344.92	21.17%
Ansal Properties & Infrastructure Limited	Q3FY10(YOY)	14.48	2.83	411.66%	197.37	198.82	-0.73%
Suzlon Energy Limited	Q3FY10(YOY)	-285.14	-390.93	27.06%	748.68	1501.67	-50.14%
Murli Industries Limited	Q3FY10(YOY)	12.64	4.02	214.43%	211.72	154.87	36.71%
Ruchi Soya Industries Ltd.	Q3FY10(YOY)	40.24	11.38	253.60%	3799.45	2995.35	26.84%
Gitanjali Gems Limited	Q3FY10(YOY)	31.43	26.89	16.88%	876	550.05	59.26%
Lumax Industries Ltd	Q3FY10(YOY)	2.65	-3.36	178.87%	152.91	128.76	18.76%
Reliance Communications Limited	Q3FY10(QOQ)	-37.71	-117.88	68.01%	3040.66	3032.37	0.27%
Emami Limited	Q3FY10(YOY)	75.71	28.62	164.54%	339.3	221.4	53.25%
Savita Oil Technologies Limited	Q3FY10(YOY)	21.26	-3.13	779.23%	299.68	283.31	5.78%
Supreme Infrastructure India Limited	Q3FY10(YOY)	11.47	5.58	105.56%	142.78	92.32	54.66%
Thermax Ltd	Q3FY10(YOY)	56.5	72.29	-21.84%	726.27	787.99	-7.83%
FCS Software Solutions Limited	Q3FY10(QOQ)	5.84	5.34	9.36%	26.35	23.43	12.46%
IFB Industries Ltd.	Q3FY10(YOY)	17.02	220.89	-92.29%	178.74	143.49	24.57%
LML Ltd.	Q3FY10(YOY)	-8.26	-30.08	72.54%	54.87	17.71	209.82%
The Andhra Pradesh Paper Mills Limited	Q3FY10(YOY)	9.37	-4.33	316.40%	156.96	141.28	11.10%
Unitech Ltd	Q3FY10(YOY)	131.94	19.5	576.62%	642.88	203.01	216.67%
Subros Ltd	Q3FY10(YOY)	8.75	0.84	941.67%	228.23	135.8	68.06%
Suprajit Engineering Limited	Q3FY10(YOY)	6.94	1.62	328.40%	55.21	39.31	40.45%
BGR Energy Systems Limited	Q3FY10(YOY)	41.9	27.2	54.04%	635.14	472.42	34.44%
SUNIL HITECH ENGR. LTD	Q3FY10(YOY)	6.39	-6.45	199.07%	154.6	147.52	4.80%
Ahluwalia Contracts (India) Limited	Q3FY10(YOY)	24.87	-	-	424.28	-	-
Su-Raj Diamonds and Jewellery Limited	Q3FY10(YOY)	14.06	2.49	464.66%	731.99	590.02	24.06%
B. L. Kashyap and Sons Limited	Q3FY10(YOY)	10.73	16.18	-33.68%	272.76	356.52	-23.49%
AIA Engineering Limited	Q3FY10(YOY)	60.56	29.12	107.97%	265.18	281.44	-5.78%

COMPANY	PERIOD	PROFIT AFTER TAX			NET SALES		
		CURR	PREV	% CHN	CURR	PREV	% CHN
Amrutanjan Health Care Limited	Q3FY10(QOQ)	4.94	4.37	13.04%	27.38	25.62	6.87%
Reliance Capital Limited	Q3FY10(YOY)	41.29	114.44	-63.92%	484.75	651.19	-25.56%
Khaitan (India) Ltd.	Q3FY10(YOY)	1.66	-1.34	223.88%	8.38	3.26	157.06%
Great Offshore Limited	Q3FY10(YOY)	49.54	57.72	-14.17%	250.65	275.83	-9.13%
Swaraj Mazda Ltd	Q3FY10(YOY)	5.9	-10.5	156.19%	187.3	41.9	347.02%
Jindal Photo Limited	Q3FY10(YOY)	1.32	7	-81.14%	91.67	85.52	7.19%
ISMT Limited	Q3FY10(YOY)	15.07	19.53	-22.84%	304.13	302.15	0.66%
Godfrey Phillips India Ltd	Q3FY10(YOY)	24.74	25.42	-2.68%	343.07	304.71	12.59%
KLG Systel Ltd.	Q3FY10(YOY)	5.28	5.47	-3.47%	48.16	57.02	-15.54%
Nesco Limited	Q3FY10(YOY)	17.3	12.76	35.58%	31.62	28.35	11.53%
Golden Tobacco Limited	Q3FY10(YOY)	-10.11	-8.86	-14.11%	17.4	21.86	-20.40%
Sudarshan Chemical Industries Ltd	Q3FY10(YOY)	8.5	2.08	308.65%	130.63	99.3	31.55%
Ess Dee Aluminium Limited	Q3FY10(YOY)	27.59	20.72	33.16%	126.28	103.78	21.68%
Aurobindo Pharma Ltd	Q3FY10(YOY)	148.26	40.72	264.10%	811.06	676.78	19.84%
Oil India Limited	Q3FY10(QOQ)	717.28	722.56	-0.73%	2041.33	2100.25	-2.81%
Kemrock Industries and Exports Limited	Q3FY10(QOQ)	10.13	8.55	18.48%	105.32	104.25	1.03%
Gammon Infrastructure Projects Limited	Q3FY10(YOY)	2.41	3.61	-33.24%	32.46	6.7	384.48%
Tulip Telecom Limited	Q3FY10(QOQ)	68.88	52.06	32.31%	500.85	491.03	2.00%
TVS Srichakra Limited	Q3FY10(YOY)	7.08	1.43	395.10%	176.38	143.92	22.55%
Nava Bharat Ventures Limited	Q3FY10(YOY)	132.23	101.08	30.82%	259.97	285.3	-8.88%
Shriram City Union Finance Limited	Q3FY10(YOY)	40.55	25.94	56.32%	259.84	240.8	7.91%
Genesys International Corporation Limited	Q3FY10(YOY)	7.98	8.67	-7.96%	14.95	22.85	-34.57%
India Nippon Electricals Limited	Q3FY10(YOY)	4.04	4.61	-12.36%	41.48	31.37	32.23%
Rei Agro Limited	Q3FY10(YOY)	34.28	2.03	1588.67%	651.16	570.09	14.22%
Hitech Plast Limited	Q3FY10(YOY)	3.35	1.58	112.03%	39	32.19	21.16%
Ruchi Infrastructure Ltd.	Q3FY10(YOY)	9.66	-27.72	134.85%	485.87	241.28	101.37%
Bannari Amman Sugars Ltd	Q3FY10(YOY)	57.82	33.85	70.81%	247.39	254.87	-2.93%
Dwarikesh Sugar Industries Limited	Q3FY10(YOY)	33.43	4.56	633.11%	165.15	122.24	35.10%
Pipavav Shipyard Limited	Q3FY10(YOY)	-39.82	-	-	167.59	-	-
GVK Power & Infrastructure Limited	Q3FY10(YOY)	6.58	3.3	99.39%	11.33	6.49	74.58%
Hinduja Ventures Limited	Q3FY10(YOY)	12.2	6.08	100.66%	0	11.98	-100.00%
Zenith Infotech Ltd.	Q3FY10(QOQ)	-38.05	13.18	-388.69%	72.76	71.61	1.61%
Kabra Extrusion Technik Ltd	Q3FY10(YOY)	6.52	0.97	572.16%	49.14	34.47	42.56%
JK Cement Limited	Q3FY10(YOY)	46.49	28.67	62.16%	429.07	362.11	18.49%
Shipping Corporation Of India Ltd.	Q3FY10(YOY)	87.44	185.43	-52.84%	845.43	1113.13	-24.05%
Alok Industries Limited	Q3FY10(YOY)	58.1	47.32	22.78%	1082.47	816.41	32.59%
Ackruti City Limited	Q3FY10(YOY)	78.6	19.08	311.95%	204.08	47.2	332.37%
Jagran Prakashan Limited	Q3FY10(YOY)	39.73	15.46	156.99%	222.94	203.15	9.74%
Gujarat Industries Power Co. Ltd	Q3FY10(YOY)	28.81	8.65	233.06%	236.27	319.57	-26.07%
Parekh Aluminex Limited	Q3FY10(YOY)	11.03	9.64	14.42%	162.03	108.44	49.42%
Dharani Sugars & Chemicals Ltd	Q3FY10(YOY)	18.74	2.09	796.65%	246.61	54.19	355.08%
Sadbhav Engineering Limited	Q3FY10(YOY)	14.1	14.37	-1.88%	314.99	276.66	13.85%
Shrenuj & Co Ltd	Q3FY10(YOY)	4.52	0.84	438.10%	273.41	247.44	10.50%
Oracle Financial Services Software Limited	Q3FY10(QOQ)	191.51	171.81	11.47%	555.54	536.59	3.53%
Classic Diamonds (India) Limited	Q3FY10(YOY)	3.2	-2.97	207.74%	166.13	176.8	-6.04%

COMPANY	PERIOD	PROFIT AFTER TAX			NET INTEREST INCOME		
		CURR	PREV	% CHN	CURR	PREV	% CHN
Bank of Maharashtra	Q3FY10(YOY)	112.04	120.66	-7.14%	361.58	343.49	5.27%
City Union Bank Ltd.	Q3FY10(YOY)	40.65	32.12	26.56%	75.29	64.97	15.88%
Syndicate Bank	Q3FY10(YOY)	205.72	356.38	-42.28%	717.95	789.5	-9.06%
The Bank of Rajasthan Ltd	Q3FY10(YOY)	-44.7	49.21	-190.84%	89.94	111.77	-19.53%

Index Chart

Index Snapshot



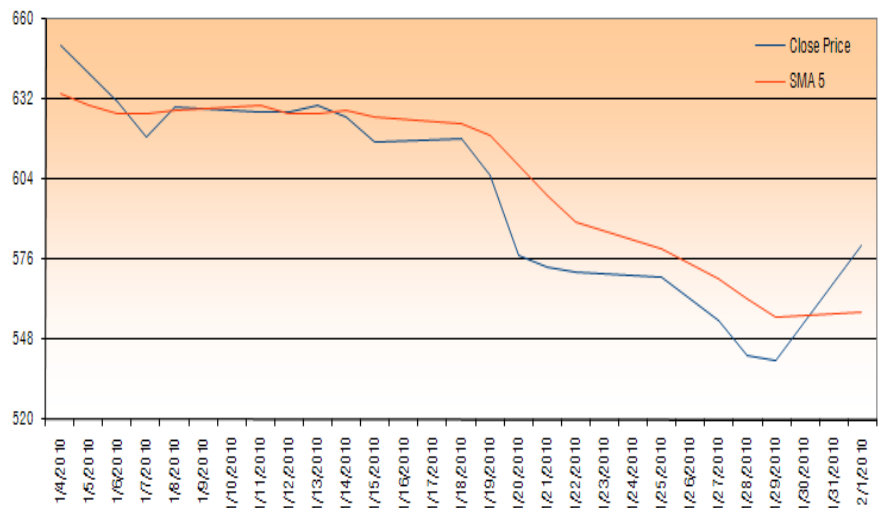
- ❖ Domestic markets opened lower today on the back of weak Asian and US markets. Markets dipped lower in the opening session but were quick to bounce back and shrug off the early losses. Metal, Banking, IT stocks were under selling pressure while Consumer goods, Telecom stocks showed strength. Markets retraced back to the previous closing marks and hovered around there for almost the entire morning session except in the late morning session when markets lost a bit of upward momentum and dipped but Nifty didn't test below the 4850 level. The afternoon session again markets traded flat with positive bias on the buying in Realty, Metal, Pharma while IT & FMCG played spoilsport. The Small & Mid cap indices outperformed the markets for almost the entire day. BPCL was the gainer in the early afternoon session among the Nifty stocks. The markets remained positive for the rest of the session to end almost flat on the back of buying in Consumer durable, IT, Metal, Auto, Oil & Gas stocks while Banking and FMCG stocks witnessed selling pressure.
- ❖ NSE Nifty touched an intra-day high of 4918.80 and low of 4827.15 while BSE Sensex touched an intra-day high of 16422.40 and low of 16160.80.
- ❖ Finally Nifty ended higher by 17.65 points at 4899.70 and Sensex closed lower by 1.93 points at 16356.03
- ❖ BPCL, GAIL, IDEA, JINDALSTEL were the major gainers where as HINDUNILVR, RELCAPITAL, HDFCBANK, SBIN were the major losers among the Nifty stocks.
- ❖ Nifty may find support at around 4820 and resistance at around 5000.

INDEX	LTP	PREVIOUS CLOSE	%CHANGE
SENSEX	16356.03	16357.96	-0.01%
CNX NIFTY JUNIOR	10151.65	9985.70	1.66%
CNX IT	5643.45	5594.15	0.88%
BANK NIFTY	8649.25	8651.55	-0.03%
CNX 100	4850.05	4822.65	0.57%
S&P CNX DEFTY	3667.30	3655.45	0.32%
S&P CNX 500	4196.30	4156.05	0.97%
CNX MIDCAP	7340.65	7201.85	1.93%
NIFTY MIDCAP 50	2584.00	2539.20	1.76%

Top Gainer

Market Gainer

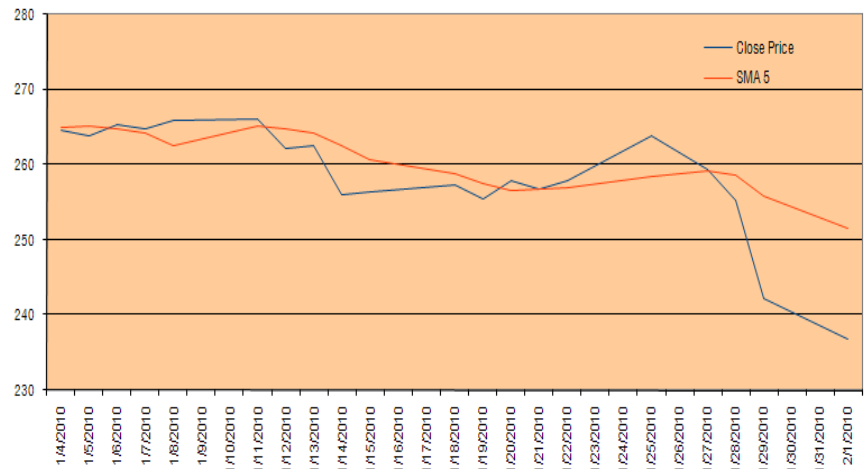
- ❖ BPCL finished as the best performer. The scrip touched an intra-day high of Rs. 590 and low of Rs. 544.80. The total traded volume for the scrip was 922880. It closed up by 7.39% to Rs. 580.80.
- ❖ Immediate short-term resistance for the counter exists at around Rs. 630.



Top Loser

Market Loser

- ❖ HINDUNILVR finished as worst performer. The scrip touched an intra-day high of Rs 243.80 and low of Rs 234.75. The total traded volume for the scrip was 4987343 shares. It closed down by 2.25% to Rs 236.85
- ❖ Immediate short-term support for the counter exists at around Rs 220.



Derivative Watch

- ❖ Nifty February series futures witnessed long position build up. Open Interest has been increased by 48659 contracts at the end of the day.
- ❖ Long position build up for the February series has been observed in TATAMOTORS, RCOM, DABUR, SUNTV, BOSCHLTD, CUMMINSIND, HINDALCO, BEL.
- ❖ Short build for the February series has been witnessed in SAIL, STER, ITC, BHEL, RELCAPITAL, CAIRN, HDFCBANK, DLF.
- ❖ Position unwinding has been witnessed in GLAXO, PATELENG, TV-18, HDIL, PTC, EKC.

Derivative Watch

SYMBOL	Expiry Date	LTP	Prev. LTP	Change in	(%) change	Open Interest*	Prev. Open Interest	Change in*	(%) change
NIFTY	25-Feb-10	4900.2	4875.65	24.55	0.50%	647125	598466	48659	8.13%
TATAMOTORS	25-Feb-10	714.5	691.2	23.3	3.37%	15350	14390	960	6.67%
RCOM	25-Feb-10	174.75	169.7	5.05	2.98%	30699	30008	691	2.30%
DABUR	25-Feb-10	165.5	159.35	6.15	3.86%	261	208	53	25.48%
SUNTV	25-Feb-10	398.9	377	21.9	5.81%	185	151	34	22.52%
BOSCHLTD	25-Feb-10	4823	4683.7	139.3	2.97%	101	71	30	42.25%
CUMMINSIND	25-Feb-10	471	450.2	20.8	4.62%	138	114	24	21.05%
HINDALCO	25-Feb-10	149.65	147.7	1.95	1.32%	4758	4214	544	12.91%
BEL	25-Feb-10	2003	1944.55	58.45	3.01%	544	379	165	43.54%
HINDZINC	25-Feb-10	1120	1118.05	1.95	0.17%	884	746	138	18.50%
TECHM	25-Feb-10	973	967.25	5.75	0.59%	1173	1046	127	12.14%
HDFC	25-Feb-10	2389	2383.5	5.5	0.23%	14957	14832	125	0.84%
NAGARCONST	25-Feb-10	164.35	158.85	5.5	3.46%	663	538	125	23.23%
BHUSANSTL	25-Feb-10	1583.6	1444.8	138.8	9.61%	658	558	100	17.92%
APIL	25-Feb-10	528.5	528.3	0.2	0.04%	617	522	95	18.20%
TITAN	25-Feb-10	1699	1500.45	198.55	13.23%	902	490	412	84.08%
SUZLON	25-Feb-10	78.9	77.35	1.55	2.00%	19716	19334	382	1.98%
SUNPHARMA	25-Feb-10	1504.7	1470.1	34.6	2.35%	1739	1553	186	11.98%
ORIENTBANK	25-Feb-10	279.4	266.1	13.3	5.00%	1055	873	182	20.85%
UNITECH	25-Feb-10	76.5	74.6	1.9	2.55%	16239	15940	299	1.88%
BHARTIARTL	25-Feb-10	309.95	306.6	3.35	1.09%	32233	31360	873	2.78%
ICICIBANK	25-Feb-10	830.3	827.65	2.65	0.32%	30866	28278	2588	9.15%
RELIANCE	25-Feb-10	1049.9	1048	1.9	0.18%	38024	35843	2181	6.08%
TATASTEEL	25-Feb-10	575.7	568.5	7.2	1.27%	23536	22308	1228	5.50%
VOLTAS	25-Feb-10	158.3	157.5	0.8	0.51%	716	638	78	12.23%
SAIL	25-Feb-10	213.35	213.7	-0.35	-0.16%	6640	5560	1080	19.42%
STER	25-Feb-10	753.4	753.65	-0.25	-0.03%	12306	11237	1069	9.51%
ITC	25-Feb-10	248.1	249.7	-1.6	-0.64%	6911	5978	933	15.61%
BHEL	25-Feb-10	2382	2390.85	-8.85	-0.37%	16400	15279	1121	7.34%
RELCAPITAL	25-Feb-10	789.85	806.3	-16.45	-2.04%	17998	16905	1093	6.47%
CAIRN	25-Feb-10	264.85	266.9	-2.05	-0.77%	10540	9792	748	7.64%
HDFCBANK	25-Feb-10	1605.7	1627.4	-21.7	-1.33%	8441	7699	742	9.64%
DLF	25-Feb-10	333.65	334.15	-0.5	-0.15%	16883	16476	407	2.47%
LT	25-Feb-10	1424.8	1426.95	-2.15	-0.15%	22431	20530	1901	9.26%
SBIN	25-Feb-10	2017.8	2050.15	-32.35	-1.58%	30676	27477	3199	11.64%
ICSA	25-Feb-10	157.85	161.65	-3.8	-2.35%	1922	1686	236	14.00%
ANDHRABANK	25-Feb-10	105.45	106.7	-1.25	-1.17%	1653	1480	173	11.69%
HOTELEELA	25-Feb-10	47.85	48.25	-0.4	-0.83%	855	775	80	10.32%
UNIPHOS	25-Feb-10	155.45	156.35	-0.9	-0.58%	658	596	62	10.40%
GLAXO	25-Feb-10	1533	1498.15	34.85	2.33%	328	333	-5	-1.50%
PATELENG	25-Feb-10	458	445.35	12.65	2.84%	662	671	-9	-1.34%
TV-18	25-Feb-10	79.2	76.85	2.35	3.06%	2752	2824	-72	-2.55%
COLPAL	25-Feb-10	723	686.15	36.85	5.37%	426	501	-75	-14.97%
DENABANK	25-Feb-10	80.8	77.85	2.95	3.79%	1757	1867	-110	-5.89%
RELINFRA	25-Feb-10	1045.7	1037.85	7.85	0.76%	15319	15655	-336	-2.15%
BEML	25-Feb-10	1149.5	1071.95	77.55	7.23%	697	712	-15	-2.11%
IOB	25-Feb-10	92.9	92.4	0.5	0.54%	1205	1222	-17	-1.39%
TATATEA	25-Feb-10	938.5	912.85	25.65	2.81%	1183	1202	-19	-1.58%
NOIDATOLL	25-Feb-10	37.35	37.3	0.05	0.13%	1200	1222	-22	-1.80%
OPTOCIRCU	25-Feb-10	219.7	215.35	4.35	2.02%	738	776	-38	-4.90%
POLARIS	25-Feb-10	168.5	158.55	9.95	6.28%	994	1036	-42	-4.05%
YESBANK	25-Feb-10	253.9	250.25	3.65	1.46%	1809	1853	-44	-2.37%
MCDOWELL-N	25-Feb-10	1255	1239.1	15.9	1.28%	3360	3406	-46	-1.35%
CROMPGREAV	25-Feb-10	437.3	432.15	5.15	1.19%	360	409	-49	-11.98%
HDIL	25-Feb-10	331	331.15	-0.15	-0.05%	10958	11092	-134	-1.21%
PTC	25-Feb-10	110	110.1	-0.1	-0.09%	1689	1747	-58	-3.32%
EKC	25-Feb-10	131.45	132.7	-1.25	-0.94%	1530	1552	-22	-1.42%

* Provisional Data

Bulk Deals

DATE	SCRIP NAME	BUYER/SELLER	BUY/SELL	QNTY.	AVERAGE RATE
29-Jan-10	BHARTISHIP	CREDIT SUISSE (SINGAPORE) LIMITED A/C CREDIT SUISSE (SINGAP	BUY	177918	281.83
29-Jan-10	BILPOWER	NIKUNJ ALLOYS & STEEL PRIVATE LIMITED	BUY	80000	186.61
29-Jan-10	HIMACHLFUT	PILOT CONSULTANTS PRIVATE LIMITED	BUY	2994370	14.98
29-Jan-10	IFCI	ADROIT SHARE & STOCK BROKER PVT. LTD.	BUY	9969	48.14
29-Jan-10	SREINTFIN	ASHIKA CREDIT CAPITAL LIMITED	BUY	600000	70.32
29-Jan-10	ZOMICRONS	VIKING INDUSTRIES PRIVATE LIMITED	SELL	64000	53.29
29-Jan-10	AUSTRAL	SICOM LTD	SELL	1869600	7.91
29-Jan-10	SREINTFIN	PCA INDIA INFRASTRUCTURE EQUITYOPEN LIMITED	SELL	940972	69.69
29-Jan-10	SREINTFIN	PRUDENTIAL ASSET MANAGEMENT (SINGAPORE) LTD A/C PCA INDIA IN	SELL	1000000	69.25

Forthcoming Events

- ANNUAL/QUARTERLY RESULTS OF THE FOLLOWING COMPANIES DUE ON 06/02/2010

NO RECORDS

- CORPORATE ACTION OF THE FOLLOWING COMPANIES DUE ON 06/02/2010

NO RECORDS

Investment Picks

□ SCRIPT NAMES

LARGE CAP PICKS

RIL
HDFC
SBIN
MARUTI
DLF
JP ASSOCIATES
IDFC
TATASTL
ADANI ENTERPRISES
CROMPGREAV
HDIL

MIDCAP PICKS

JINDAL SAW
GVKPIL
GMRINFRA
BIOCON
PUNJLLOYD
IVRCLINFRA
FEDERAL BANK
JAYSHREETEA
PRAKASH INDUSTRIES
VOLTAS
BATA
AMARARAJA
PSL,
FSL
VIDEOIND
WOCKHARDT
NELCO
DCHL

D I S C L A I M E R

This document has been prepared by Shriram Insight Share Brokers Ltd. and is meant for sole use by the recipient and not for circulation. This document is not to be reported or copied or made available to others. The information contained herein is from sources believed reliable. It should not be considered to be taken as an offer to sell or a solicitation to buy any security or as an official confirmation of any transaction. We do not represent that it is accurate or complete and it should not be relied upon as such. This document is prepared for assistance only and is not intended to be and must not alone be taken as the basis for an investment decision. The investments discussed or recommended in this report may not be suitable for all investors. Shriram Insight Share Brokers Ltd stock Recommendation Service is a general recommendation service and is not to be construed as an individual investor specific Portfolio Management and Advisory Service.

The user assumes the entire risk of any use made of this information. Each recipient of this document should arrive at an independent evaluation of an investment in the securities of companies referred to in this document and should consult its own advisors to determine the merits and risks of such an investment.

Shriram Insight Share Brokers Ltd shall not be responsible for any loss or liability incurred to the user as a consequence of his or any other person on his behalf taking any investment decisions based on the information, recommendations, research reports, analysis, quotes, etc. provided on the web site

Shriram Insight Share Brokers Ltd shall also not be liable for errors, omissions or typographical errors, disruption delay, interruption, failure, deletion or defect of/in the Service provided by it.

All Users of the Service in countries other than India understand that by using the Service, they may be violating the local laws in such countries. If the User chooses to access the Service from outside India, he shall be responsible for compliance with foreign and local laws.