

Monday 20 September 2010

	17-Sep	Inc/Dec	% Chg
Sensex	19595	177	0.9
Nifty	5885	56	1.0
BSE Midcap	8104	114	1.4
BSE Smallcap	10239	94	0.9
DOW	10608	13	0.1
Nasdaq	2316	12	0.5
Hang Seng *	21927	(44)	(0.2)
Nikkei #	NA	NA	NA
SGX Nifty *	5902	(12)	(0.2)

*Rates as on 9am on current date. # Market Closed.

BSE Sectoral Indices

	17-Sep	Inc/Dec	% Chg
Gainers			
Cons. Durables	6154	126	2.1
Health Care	5842	118	2.1
Oil & Gas	10736	187	1.8
Metals	16489	280	1.7
FMCG	3563	41	1.2
Teck	3656	39	1.1
Capital Goods	15511	139	0.9

Fund Activity

(Rs. Crs)	Purchase	Sales	Net
FII – Cash	3507	2362	1145
FII – F&O	12908	15472	(2565)
MF – Cash	522	1273	(751)

Market Breadth

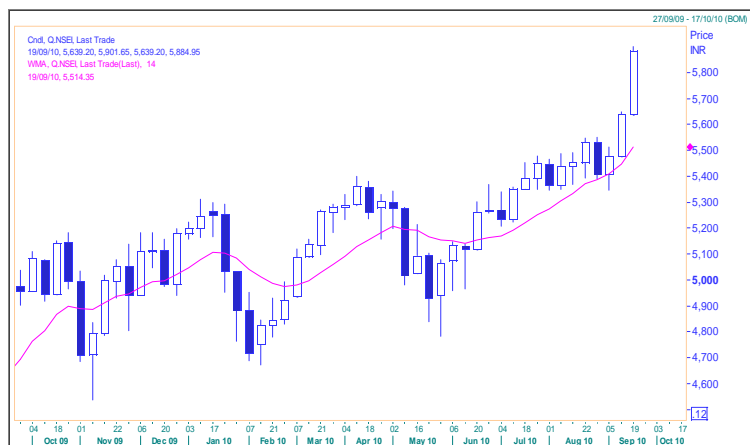
	NSE	BSE
Advances	940	1823
Declines	425	1190
A/D Ratio	2.21	1.53

Market Outlook

Friday, the domestic bourses rebounded after previous session's late sell off and maintained the upbeat momentum that initiated last week. The market opened in a robust mood and surpassed the 5,850 mark on Nifty. Today the benchmark Indices are likely to open negative on report of an unexpected drop in U.S. consumer confidence that dragged down shares in raw-material producers.

Indices	Close	Support I	Support II	Resistance I	Resistance II
Sensex	19595	19475	19354	19677	19759
Nifty	5885	5843	5801	5913	5940

S&P CNX Nifty (Weekly)



Source: Reuters

Important Note:

Above rates represent NSE cash / spot market prices

The scrip mentioned in Cash / Spot Segment can also be traded in the Futures Segment by just co-relating their Cash / Spot Segment trading levels with their corresponding Futures prices.

Always trade 05 -10 minutes after the market opens.

RBS Equities (India) Limited

Retail Brokerage Services

Mafatlal Chambers, "C" Wing, Ground Floor, N M Joshi Marg, Lower Parel (East), Mumbai 400013

Telephone : 91 22 6754 8411 Fax : 91 22 6754 8420

Monday 20 September 2010

^ Currency & Commodities	Price	% Chg
Crude	73.9	(1.2)
Gold	19175.0	(0.6)
Re \$	45.7	(0.3)

BSE		
Gainers Group A	Price	% Chg
Ispat Inds	23.8	17.0
Godrej Cons	459.4	10.0
Everest Kanto	121.0	7.1
Losers Group A		
Price	% Chg	
Apollo Hosp	410.3	(1.4)
Shriram Trans	775.2	(1.4)
BOB	875.2	(1.2)

NSE		
Gainers	Price	% Chg
Krishnaeng	3.6	20.3
Balpharma	35.9	20.1
Indswftltd	48.8	20.1
Losers		
Price	% Chg	
Ashco	0.8	(6.3)
Jdorgochem	3.1	(6.2)
Bellceratl	21.8	(5.0)

52 – Week High	High Price	Close (%)
Ambuja Cements	144.3	4.7
Idea Cellular	80.0	3.9
Larsen	1970.0	1.4
52 – Week Low		
Low Price	Close (%)	
Asian Hotels	307.5	(3.1)
Rotam Comm	30.6	(0.2)
Artefact	68.1	0.6

Sporadic Volume	Last Volume	2 Weeks Avg Volume
Idea Cellular	2,003,000	890,000
Everest Kanto	1,972,000	385,000
Ranbaxy Labs	908,000	210,000

^News you can use

- Deutsche Bank and its asset management unit - lenders to Vishal Retail - have received a stay order from the Delhi High Court to the retailer's plan to sell business to Chennai-based Shriram Group and Texas Pacific Group for 1 billion rupees.
- Private equity funds Sandstone Capital and Sequoia Capital have picked up a minority stake in India's largest domestic cellphone handsets maker, Micromax, for about 2 billion rupees ahead of the firm's possible listing on stock exchanges.
- The Wadhawan family, the owners of Housing Development and Infrastructure, has emerged the front runner to buy Gurgaon-based Artemis Hospitals, valued at 4.5 billion rupees, from the Kanwar family that runs Apollo Tyres.
- The federal ministry of corporate affairs has ordered a probe into the Norway-based Telenor ASA's investment worth 110 billion rupees in real estate firm Unitech's telecom unit, Uninor.

^Events for the day

^Today's Corporate Actions

- Dividend : Shipping Corp (Rs.5/-)
- Dividend : Zenith Fibres (Rs.1.5/-)
- Final Dividend : AMD Inds (Rs.1/-)
- Final Dividend : DS Kulkarni (Rs.1/-)
- Final Dividend : Lakshmi Prec (Rs.1/-)
- Final Dividend : Modern Share (Rs.0.5/-)
- Final Dividend : Satra Prop (Rs.0.1/-)

^ Source : SEBI, BSE, NSE, Reuters

RBS Equities (India) Limited

Retail Brokerage Services

Mafatlal Chambers, "C" Wing, Ground Floor, N M Joshi Marg, Lower Parel (East), Mumbai 400013
Telephone : 91 22 6754 8411 Fax : 91 22 6754 8420

Monday 20 September 2010

<i>Pivots for the day</i>								
<u>SYMBOL</u>	<u>HIGH</u>	<u>LOW</u>	<u>CLOSE</u>	<u>Support 2</u>	<u>Support 1</u>	<u>Pivot Points (PP)*</u>	<u>Res.1</u>	<u>Res.2</u>
Abb	852.0	815.9	848.9	802.8	825.9	838.9	862.0	875.0
Acc	1003.0	968.6	998.0	955.5	976.7	989.9	1011.1	1024.3
Ambujacem	144.3	135.1	143.0	131.6	137.3	140.8	146.5	150.0
Axisbank	1513.0	1481.0	1505.0	1467.7	1486.3	1499.7	1518.3	1531.7
Bhartiartl	360.0	349.1	359.5	345.3	352.4	356.2	363.3	367.1
Bhel	2477.0	2435.0	2445.0	2410.3	2427.7	2452.3	2469.7	2494.3
Bpcl	770.5	754.3	767.7	748.0	757.8	764.2	774.0	780.4
Cairn	355.0	338.1	340.6	327.7	334.1	344.6	351.0	361.5
Cipla	310.9	305.7	308.9	303.3	306.1	308.5	311.3	313.7
Dif	358.7	349.8	351.5	344.4	348.0	353.3	356.9	362.2
Gail	484.0	472.5	481.3	467.8	474.5	479.3	486.0	490.8
Hcltech	423.0	417.2	418.4	413.7	416.0	419.5	421.8	425.3
Hdfc	699.8	680.1	685.5	668.7	677.1	688.5	696.9	708.2
Hdfcbank	2426.0	2387.0	2403.0	2366.3	2384.7	2405.3	2423.7	2444.3
Herohonda	1767.9	1735.3	1744.0	1716.4	1730.2	1749.0	1762.8	1781.6
Hindalco	191.3	187.0	188.7	184.7	186.7	189.0	191.0	193.2
Hindunilvr	284.0	277.6	283.7	275.4	279.5	281.8	285.9	288.2
Icicibank	1122.0	1105.0	1119.0	1098.3	1108.7	1115.3	1125.7	1132.3
Idea	80.0	73.3	77.9	70.3	74.1	77.0	80.8	83.8
Idfc	199.6	191.6	194.2	187.2	190.7	195.1	198.6	203.1
Infosystch	3012.5	2959.4	2977.3	2930.0	2953.6	2983.1	3006.7	3036.2
Itc	169.3	166.4	168.9	165.3	167.1	168.2	170.0	171.1
Jindalstel	714.8	699.1	710.0	692.3	701.2	708.0	716.8	723.6
Jpassociat	125.5	121.5	122.2	119.1	120.6	123.1	124.6	127.1
Kotakbank	478.0	468.1	475.0	463.8	469.4	473.7	479.3	483.6
Lt	1970.0	1942.0	1967.0	1931.7	1949.3	1959.7	1977.3	1987.7
M&M	686.0	677.2	679.0	671.9	675.5	680.7	684.3	689.5
Maruti	1414.2	1382.0	1387.5	1362.4	1374.9	1394.6	1407.1	1426.8
Ntpc	208.0	204.8	205.1	202.8	203.9	206.0	207.1	209.2
Ongc	1422.5	1389.0	1403.0	1371.3	1387.2	1404.8	1420.7	1438.3
Pnb	1312.5	1276.0	1290.9	1256.6	1273.8	1293.1	1310.3	1329.6
Powergrid	106.5	105.0	105.4	104.2	104.8	105.6	106.2	107.1
Ranbaxy	536.2	507.0	532.0	495.9	513.9	525.1	543.1	554.3
Rcom	168.9	158.5	168.5	154.9	161.7	165.3	172.1	175.7
Relcapital	816.4	805.7	810.0	800.0	805.0	810.7	815.7	821.4
Reliance	1031.4	1005.0	1026.7	994.6	1010.6	1021.0	1037.0	1047.4
Relinfra	1070.5	1053.0	1063.0	1044.7	1053.8	1062.2	1071.3	1079.7
Rpower	161.9	153.2	161.2	150.1	155.6	158.8	164.3	167.5
Sail	204.4	200.1	202.3	197.9	200.1	202.2	204.4	206.6
Sbin	3140.0	3080.0	3094.0	3044.7	3069.3	3104.7	3129.3	3164.7
Siemens	769.0	750.3	752.9	738.7	745.8	757.4	764.5	776.1
Ster	174.5	170.0	174.2	168.4	171.3	172.9	175.8	177.3
Sunpharma	1891.0	1845.1	1890.0	1829.5	1859.7	1875.4	1905.6	1921.3
Suzlon	59.0	53.4	54.5	50.0	52.3	55.6	57.9	61.2
Tatamotors	1047.9	1029.5	1034.0	1018.7	1026.4	1037.1	1044.8	1055.5
Tatapower	1276.0	1257.2	1263.0	1246.5	1254.8	1265.4	1273.6	1284.2
Tatasteel	614.3	597.4	607.8	589.6	598.7	606.5	615.6	623.4
Tcs	918.8	900.1	917.0	893.3	905.2	912.0	923.8	930.6
Unitech	90.0	87.5	87.9	85.9	86.9	88.4	89.4	91.0
Wipro	430.8	418.1	419.0	410.0	414.5	422.6	427.1	435.3

* Pivot Table is a traditional trading tool based on mathematical formulae, which is generally used by day traders to ascertain the Supports and Resistances of various stocks and Indices. Pivot point is the potential fulcrum of the stock for the day, derived from the High, low and close of the previous day. Above the PP, two levels of resistances can be found (R1 & R2). Below PP are the 2 support levels (S1 & S2). The above levels are broad indicators only and may not necessarily reflect our views on index or stock. The same are valid only for the day.

Market Statistics

Provisional data	FII (Rs crs)	DII (Rs crs)
Cash Buy	5273	1073
Cash Sale	3754	1820
Net (Provisional)	1519	(747)

FII Derivatives data	Buy	Sell	Net	Open Interest
Index Futures	1650	1151	499	23333
Index Options	6190	5951	239	83077
Stock Futures	1799	1923	(124)	40002
Stock Options	729	722	8	1649
	10368	9747	621	148061

ADR/GDR Performance	17-Sep-10			Prev. Close
	US\$	Inc/Dec	% Change	
Dr Reddys Labs	31.6	(0.2)	(0.6)	31.8
HDFC Bank Ltd	182.1	2.4	1.4	179.7
ICICI Bank Ltd	47.8	0.3	0.7	47.5
Infosys Tech	65.1	0.2	0.3	64.9
MTNL	2.8	0.0	0.7	2.8
Satyam Computer	5.1	(0.1)	(1.9)	5.2
Tata Motors Ltd	23.3	(0.3)	(1.2)	23.6
VSNL	14.3	(0.1)	(0.6)	14.4
Wipro Ltd	13.8	0.0	0.2	13.8
Patni	19.6	(0.3)	(1.3)	19.8

Bulk Deals				
Company	Fund	Buy/Sell	Quantity	Price
Aksh Optifibre Limited	Decent Technologies Pvt Ltd	Buy	1,185,682.0	22.3
Aksh Optifibre Limited	Deutsche Bank Ag	Sell	900,000.0	22.9
Essar Ship Port & Log Ltd	India Max Investment Fund Ltd	Buy	27,392,130.0	112.0
Essar Ship Port & Log Ltd	Standard Chartered Bank (Mauritius) Ltd - Daivi Ventures	Sell	27,390,156.0	112.0
Geodesic Limited	Wisdomtree Trust A/C Wisdom Tree India Invest Portfolio	Sell	503,436.0	103.5
Hanung Toys & Textiles	Kotak Securities Client Pms A/C	Buy	152,000.0	299.9
Ind-Swift Labs Ltd.	Jmp Securities Pvt Ltd	Buy	150,000.0	138.9

As on 17 th September 2010	No. of Contracts	Turnover (Rs. Cr) *	No. of contracts	Turnover (Rs. Cr) *
Index Futures	539434	15197	855795	24001
Stock Futures	759871	23707	803429	26064
Index Options	2473662	72119	3129339	91029
Stock Options	175063	5514	198804	6681
F&O Total	3948030	116537	4987367	147776

RBS Equities (India) Limited

Retail Brokerage Services

Mafatlal Chambers, "C" Wing, Ground Floor, N M Joshi Marg, Lower Parel (East), Mumbai 400013
Telephone : 91 22 6754 8411 Fax : 91 22 6754 8420

Disclaimer

This document is not for public distribution and has been furnished to you solely for your information and must not be reproduced or redistributed to any other person. Persons into whose possession this document may come are required to observe these restrictions. This material is for the personal information of the authorized recipient and we are not soliciting any action based upon it. This report is not to be construed as an offer to sell or the solicitation of an offer to buy any security in any jurisdiction where such an offer or solicitation would be illegal. It is for the general information of clients of RBS Equities (India) Limited (RBSEIL). It does not constitute a personal recommendation or take into account the particular investment objectives, financial situation or needs of individual clients. We have reviewed the report and in so far as it includes current or historical information, it is believed to be reliable though its accuracy or completeness cannot be guaranteed. Neither RBSEIL nor any person connected with it accepts any liability arising from the use of this document. The information contained in the said report should be construed as non-discretionary in nature and the recipient of this material should rely on their own investigations and take their own professional advice. Price and value of investments referred to in this material may go up or down. Past performance is not a guide for future performance. Certain transactions – including those involving futures and options and other derivatives as well as non-investment grade securities – involve substantial risk and are not suitable for all investors. Reports based on technical analysis centre on studying charts of a stock's price movement and trading volumes, as opposed to focusing on a company's fundamentals, and as such, may not match with a report on fundamentals. Opinions expressed are our current opinions as of the date appearing on this material only. Clients should not await such reports at regular intervals / frequency and should not hold RBSEIL responsible for failure to send such reports. While we endeavor to update on a reasonable basis the information discussed in this material, there may be regulatory, compliance or other reasons that prevent us from doing so. Prospective investors are cautioned that any forward looking statements are not predictions and may be subject to change without notice. Our proprietary trading and investment businesses may make investment decisions that are inconsistent with the recommendations expressed herein. RBSEIL has two independent equity research groups: Institutional Equities (IE) and Retail Broking Services. This report has been prepared by Retail Broking Services and is being distributed to only to Retail Broking clients. The views and opinions expressed in this document may or may not match or may be contrary with the views, estimates, rating, target price of the IE research of RBSEIL. We and our affiliates, officer, directors and employees worldwide may (a) from time to time have long or short positions in and buy or sell securities thereof, of company(ies) mentioned therein or (b) be engaged in any other transactions involving such securities and earn brokerage or other compensation or act as a market maker in the financial instruments of the company (ies) discussed herein or act as advisor or lender / borrower to such company (ies) or have other potential conflict of interest with respect to any recommendation and related information and opinions. The analyst for this report certifies that all of the views expressed in this report accurately reflect his or her personal views about the subject company or companies and its or their securities and no part of his or her compensation was, is or will be directly related to specific recommendations and related information and opinions. No part of this material may be duplicated in any form and / or re-distributed without RBSEIL's prior written consent.