



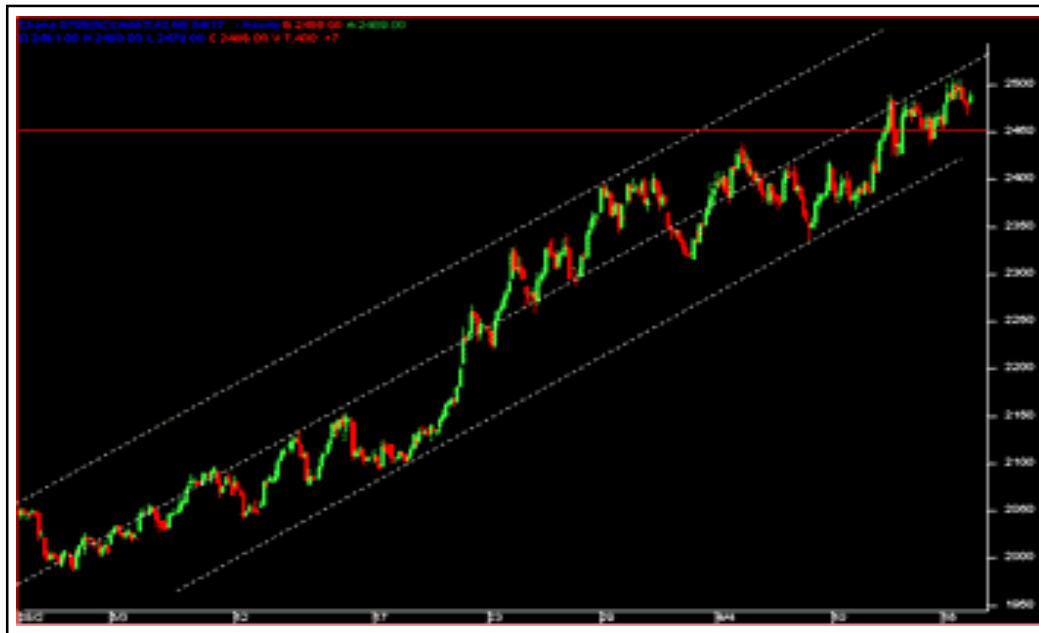
Punter's Call

Chana trading in a channel

NCDEX chana is trading in a channel for the past couple of months. If you see the chart, every time it has tested the upper trend line, it has shown correction; also the lower trend line has acted as a crucial support. Now it is very interesting to see the middle trend line of this channel is

acting as a resistance around the Rs2,500 level. Once that is breached there is all the possibility that the commodity will test the upper trend line, which comes around the Rs2,600 level.

Chana



Short Term Trend

| | Target | Trend | Reversal | Support/Resistance |
|------------|--------|-------|---------------|--------------------|
| NCDEX Agri | 1575 | ↓ | Up above 1631 | 1579 / 1600 |

Medium Term Trend

| | Target | Trend | Reversal | Support/Resistance |
|------------|--------|-------|-----------------|--------------------|
| NCDEX Agri | 1636 | ↑ | Down below 1506 | 1546 / 1605 |

Icon guide

| | | | |
|------|--------|---------------------|-------------------|
| ↑ Up | ↓ Down | ↘ Downswing matures | ↗ Upswing matures |
|------|--------|---------------------|-------------------|

Smart Chart Calls

| Date | Recommendation | Stop loss/ Reversal (on closing basis) (Rs) | Price (Rs) | LTP (Rs) | Potential P/L at CMP (%) | Targets (Rs) |
|----------|----------------------|--|------------|----------|-----------------------------|--------------|
| 11-04-07 | Sell Comex Copper | DCL - SL 363 | 350 | 350.0 | 0% | 323 |
| 16-04-07 | Buy NCDEX June Chili | 5,655 | 5,779 | 5,676.0 | -2% | 5,960 |

HCL: Hourly closing basis / *DCL*: Daily closing basis / *FMCL*: Fifteen minute closing basis

Note: calls are indicative and for record and have been initiated intra-day in the last 24 hours.

Momentum Calls

| Date | Recommendation | Stop loss/ Reversal (on closing basis) (Rs) | Price (Rs) | LTP (Rs) | Potential P/L at CMP (%) | Targets (Rs) |
|----------|-------------------------|--|------------|----------|-----------------------------|--------------|
| 13-04-07 | Sell Nickel | FMCL-2130 | 2,090 | 2,115 | -1.18% | 2,050-2,000 |
| 16-04-07 | Sell Copper | FMCL-338.5 | 333.8 | 330 | 1.15% | 329-324 |
| 16-04-07 | Sell Zinc | FMCL-152.5 | 150.9 | 150 | 0.60% | 148 |
| 16-04-07 | Buy MCX May Potato | FMC-SL 585 | 593.7 | 611 | 2.91% | 620 |
| 17-04-07 | Sell NCDEX May Pepper | FMC-SL 16,243 | 15,985 | 15,860 | 0.79% | 15,500 |
| 17-04-07 | Sell NCDEX May Turmeric | FMC-SL 2,245 | 2,220 | 2,220 | 0.00% | 2,201-2,170 |

HCL: Hourly closing basis / *DCL*: Daily closing basis / *FMCL*: Fifteen minute closing basis

Note: calls are indicative and for record and have been initiated intra-day in the last 24 hours.

Day Trader's HIT List (commodities)

For April 17, 2007

| Exchange | Contract | Instrument | Support S1 | Levels S2 | LTP (Rs) | Resistance R2 | Levels R1 | Mode & Action |
|----------------------------|----------|-----------------|---------------|--------------|-------------|------------------|--------------|--|
| Oil & Oil Seeds | | | | | | | | |
| MCX | May | Mentha Oil | 564 | 560 | 574 | 578 | 581 | Sell on rise around R2. |
| MCX | May | Refined Soy Oil | 483 | 484 | 486 | 487 | 489 | Sell on rise around R2. |
| NCDEX | April | Soybean | 1555 | 1560 | 1577 | 1579 | 1580 | Buy on decline around S2. |
| Spices | | | | | | | | |
| MCX | May | Cardamom | 493 | 496 | 501 | 507 | 510 | Sell on rise around R2/ Sell below S2. |
| NCDEX | June | Chili | 5640 | 5700 | 5736 | 5769 | 5800 | Sell below S2/ Buy above R2. |
| NCDEX | May | Jeera | 13775 | 14000 | 14214 | 14370 | 14490 | Sell below S2/ Buy above R2. |
| NCDEX | May | Pepper | 15543 | 15712 | 16135 | 16200 | 16370 | Sell with stop above R2. |
| NCDEX | May | Turmeric | 2201 | 2220 | 2232 | 2240 | 2255 | Sell with stop above R2. |
| Others | | | | | | | | |
| NCDEX | May | Guar Seeds | 2061 | 2080 | 2100 | 2110 | 2123 | Sell with stop above R2. |
| MCX | May | Potato | 589 | 593 | 595 | 600 | 615 | Buy above R2. |
| NCDEX | May | Chana | 2456 | 2470 | 2490 | 2500 | 2521 | Sell with stop above R2. |

For Private Circulation only

[Home](#)

"This document has been prepared by Sharekhan Commodities Pvt. Ltd. and is intended only for the person or entity to which it is addressed to and may contain confidential and/or privileged material and is not for any type of circulation. Any review, retransmission, or any other use is prohibited. Kindly note that this document does not constitute an offer or solicitation for the purchase or sale of any financial instrument or as an official confirmation of any transaction. If you have received this in error, please contact the sender and delete the material immediately from your computer/mailbox. The information contained herein is from sources believed reliable. We do not represent that it is accurate or complete and it should not be relied upon as such. We may from time to time have positions in, or options on, and buy and sell securities referred to herein. We may from time to time solicit from, or perform investment banking, or other services for, any company mentioned. Any comments or statements made herein do not necessarily reflect those of Sharekhan Commodities Pvt. Ltd."