



Indices

Indices	Today's close	% chg
Sensex	18,311	-0.53
Nifty	5,505	-0.69
S&P CNX 500	4,624	-0.66
BSE 500	7,452	-0.59
BSE Mid-Cap	7,831	-0.70
BSE Small-Cap	9,900	-0.68
BSE Auto	8,893	-0.24
BSE Health	5,655	0.14
BSE FMCG	3,350	0.33
BSE IT	5,510	-0.67
BSE PSU	9,736	-0.79
BSE Bankex	12,537	-0.48
BSE Oil & Gas	10,174	-0.55
BSE Metal	15,181	-1.94
BSE Cons Dur	5,968	0.47
BSE Cap Good	14,870	-0.63
BSE Realty	3,604	-2.62
BSE Power	3,090	-0.78

- > [From Our Technical Desk](#)
- > [From The Dealing Desk](#)
- > [Statistical Data](#)

From Our Technical Desk

Below 20-HSMA

Today on account of profit booking in metal, technology and realty companies' shares, Nifty finally broke the rising wedge on downside. Furthermore, Nifty also closed below the support of 20-hourly simple moving average (20-HSMA), which was acting as a support since past few sessions. So now the next key support to look out for is the psychological mark of 5500. If that sees violations on closing basis, then the current fall may deepen upto 5450-5400 level.

Levels to Watch

	Sensex	Nifty
Day's High	18,451	5,547
Day's Low	18,260	5,488
21 EDMA	18,152	5,454
55 EDMA	17,864	5,366

Trend Tracker

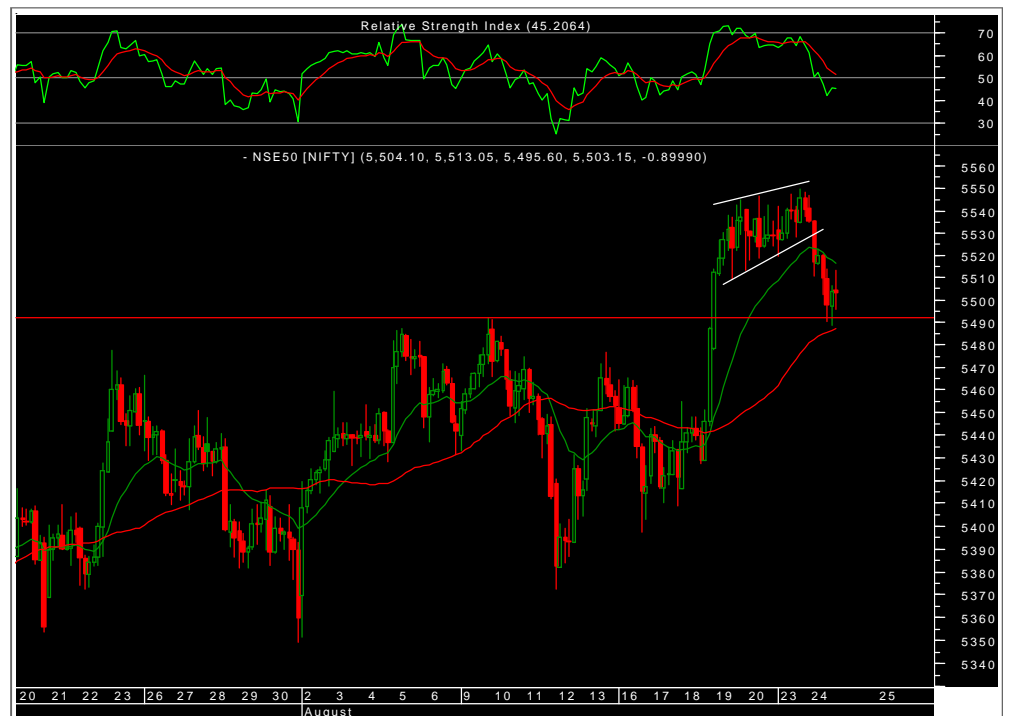
	Up/ Down	Sensex/ Nifty	Sensex/ Nifty
		Target	Reversal
ST	-	-	-
MT	↓	16,200/4,900	18,500/5,550

ST: 0-14 days.

MT: 14-45 Days.

Nifty Intraday Levels to Watch

	Support	Resistance
Nifty	5,488/5,473	5,513/5,525



Equity Advisory Desk

Tel.: 022 66121245

Sectoral Speak

BSE Realty

Selling was witnessed in the BSE Realty index and it finally closed at 3604 with a loss of -2.62%. Going forward now this index has support at 3560 levels which is 21DEMA, and in the coming days if it starts trading below the 21DEMA then we will witness further downside in this index.



BSE Metal

BSE Metal index broke the 200DEMA and closed at 15181 with a loss of -1.94%. On the daily chart this index had formed Lower Top as well as already retraced 61.80% of the recent rally from 15026 to 15595, thus this index is not showing any strength and we will witness further downside till 15026 levels.



Technical Recommendations

EPT Calls

Date	Stocks	Action	Reco. Price	Stop- Loss	Target	CMP	% Chg	Comment
09-Aug-10	Gati	Buy	82.50	74.40	100/114	78.90	-4.30%	
16-Aug-10	GMR Infra	Sell	61.00	65.20	56/51	60.60	0.66%	
19-Aug-10	HOEC	Buy	251.50	233.40	283/315	250.80	-0.28%	
24-Aug-10	Jpassociate	Sell	119.55	126.10	114/108	118.50	0.89%	

EMT Calls

Date	Stocks	Action	Reco. Price	Stop- Loss	Target	CMP	% Chg	Comment
17-Aug-10	Wipro	Sell	412.00	428.00	395/380	407.25	1.17%	
18-Aug-10	Tatamotors	Buy	1,035.00	997.40	1,069/1,100	1,008.00	-2.61%	
18-Aug-10	M&M	Sell	612.45	631.60	592/571	615.50	-0.50%	
20-Aug-10	NELCO	Buy	120.30	117.40	127/135	116.15	-3.45%	Stop-loss triggerred
20-Aug-10	Gail	Buy	468.50	452.00	485/500	454.90	-2.90%	
23-Aug-10	Petronet	Buy	115.80	111.70	122/129	114.60	-1.04%	
23-Aug-10	SBIN	Buy	2,839.00	2,762.00	2,930/2,970	2,839.00	0.00%	Exit
23-Aug-10	Amar Reme	Buy	107.00	102.40	114/120	111.70	4.39%	Profit booked
24-Aug-10	Unitech	Sell	85.05	88.30	81/78	83.50	1.86%	
24-Aug-10	TISCO	Sell	516.00	530.00	492/583	514.00	0.39%	

Pivot Table

Name	Daily Close	S2	S1	PP	R1	R2
A.C.C.	864.30	848.80	856.55	868.30	876.05	887.80
ABB LTD.	765.10	741.93	753.52	769.23	780.82	796.53
AMBUJACEM	121.95	118.78	120.37	121.58	123.17	124.38
AXISBANK	1,373.90	1,345.17	1,359.53	1,372.27	1,386.63	1,399.37
BHARAT PETRO	762.05	729.52	745.78	771.82	788.08	814.12
BHARTIARTL	322.00	312.87	317.43	321.42	325.98	329.97
BHEL	2,485.00	2,451.77	2,468.38	2,496.62	2,513.23	2,541.47
CAIRN	353.80	335.60	344.70	354.10	363.20	372.60
CIPLA	317.10	310.10	313.60	317.30	320.80	324.50
DLF	322.00	313.67	317.83	324.67	328.83	335.67
GAIL	454.90	444.97	449.93	458.97	463.93	472.97
HCL TECHNOLO	409.85	400.82	405.33	408.57	413.08	416.32
HDFC BANK	2,217.30	2,139.23	2,178.27	2,199.13	2,238.17	2,259.03
HERO HONDA	1,887.90	1,854.17	1,871.03	1,902.02	1,918.88	1,949.87
HINDALCO	168.15	161.78	164.97	170.73	173.92	179.68
HINDUNILVR	271.00	265.17	268.08	270.02	272.93	274.87
HOUS DEV FIN	623.95	607.72	615.83	624.32	632.43	640.92
ICICI BANK	1,000.00	981.33	990.67	1,007.33	1,016.67	1,033.33
IDEA	67.70	65.23	66.47	68.53	69.77	71.83
IDFC	187.35	183.05	185.20	186.90	189.05	190.75
INFOSYS TECH	2,761.90	2,734.90	2,748.40	2,768.70	2,782.20	2,802.50
ITC	159.85	157.22	158.53	159.92	161.23	162.62
JINDL STL&PO	698.35	684.38	691.37	702.53	709.52	720.68
JPASSOCIATEQ	118.50	115.90	117.20	119.45	120.75	123.00
KOTAK BANK	855.00	836.13	845.57	861.78	871.22	887.43
LT EQ	1,864.00	1,834.37	1,849.18	1,865.92	1,880.73	1,897.47
MAH & MAH	615.50	604.10	609.80	619.80	625.50	635.50
MARUTI	1,233.60	1,207.87	1,220.73	1,237.87	1,250.73	1,267.87
NSE NIFTY	5,503.25	5,454.18	5,478.72	5,512.98	5,537.52	5,571.78
NTPCEQ	193.35	191.12	192.23	194.37	195.48	197.62
ONGC CORP.	1,274.20	1,250.27	1,262.23	1,276.97	1,288.93	1,303.67
PNB	1,185.00	1,165.67	1,175.33	1,191.67	1,201.33	1,217.67
POWERGRID	102.80	101.03	101.92	103.43	104.32	105.83
RANBAXY LAB.	495.00	468.53	481.77	491.23	504.47	513.93
RCOM	166.45	161.05	163.75	165.80	168.50	170.55
REL.CAPITAL	776.65	759.82	768.23	778.62	787.03	797.42
RELIANCE	971.10	959.43	965.27	973.13	978.97	986.83
RELINFRA	1,021.50	999.17	1,010.33	1,032.17	1,043.33	1,065.17
RPOWER	153.20	151.43	152.32	153.58	154.47	155.73
SIEMENS	717.00	707.40	712.20	715.95	720.75	724.50
STATE BANK	2,842.00	2,772.73	2,807.37	2,831.13	2,865.77	2,889.53
STEELAUTHOR	189.25	186.12	187.68	190.12	191.68	194.12
STER EQ	152.25	145.22	148.73	154.27	157.78	163.32
SUN PHARMA.	1,788.00	1,757.67	1,772.83	1,790.42	1,805.58	1,823.17
SUZLON	50.05	47.98	49.02	50.33	51.37	52.68
TATAPOWER	1,280.75	1,264.45	1,272.60	1,283.15	1,291.30	1,301.85
TATAMOTORSEQ	1,008.05	998.82	1,003.43	1,011.72	1,016.33	1,024.62
TATASTEEL	514.05	501.28	507.67	516.78	523.17	532.28
TCSEQ	869.35	855.18	862.27	872.08	879.17	888.98
UNITECHLTD	83.50	80.50	82.00	84.20	85.70	87.90
WIPRO	407.25	401.48	404.37	409.88	412.77	418.28

From The Dealing Desk

Trading Ideas

- Remain stock specific from current levels.
- Trading ideas which we like are **Cipla (Target Rs350)**, **BF Utility (Target Rs1,322)**, **Areva (Target Rs350)** and **Thomas Cook (Target Rs88)**. Traders maintain stop loss accordingly.

Investment Ideas

Strategy should be to accumulate investment idea like **Jubilant Organosys**.

Jubilant Organosys: CMP@ Rs344

- Jubilant's numbers are below expectations with a) Revenue growth of 10% (in-line with est), however OPM at 16% (est. of 19%) & APAT at Rs834mn (est. of Rs1bn) was lower than est.
- High cost inventory and lower realization in Life science products impacted the operating performance of the company
- Stabilization in the prices, strong order book and new contracts in CMO and exclusive synthesis segment provides fair visibility in earnings going forward
- Maintain earning estimates; re-iterate Buy with a **price target of Rs455**.

Statistical Data

Derivatives Update

	23-Aug-2010		24-Aug-2010		Changes	
	OI	Value cr.	OI	Value cr.	OI	Value cr.
NIFTY Aug	2,95,81,550	16,371	2,40,64,000	13,256	-55,17,550	-3,115
NIFTY Sep	1,05,79,100	5,866	1,67,35,350	9,231	61,56,250	3,365
NIFTY Oct	7,79,200	432	8,13,800	449	34,600	17
MINIFTY Aug	12,38,620	686	10,25,760	565	-2,12,860	-121
BANKNIFTY Aug	27,23,275	3,017	19,52,600	2,154	-7,70,675	-863
BANKNIFTY Sep	8,07,850	895	15,06,050	1,661	6,98,200	765
CNX IT Aug	19,400	12	18,250	11	-1,150	-1
NFTYMCAP50 Aug	75	0	75	0	0	1
Index Future Total		27,279		27,327		47
Stock Future Aug		36,017		28,695		-7,322
Stock Future Sep		17,347		23,979		6,632
Stock Future Total		53,364		52,674		-690
Over All OI		80,644		80,001		-642

- Nifty Near Month Future Disc. to Cash was avg. 2-3 pts.
- Market Turn Over was good to Rs. 151,500 cr. (BSE + NSE + NSE F&O)

Advance Decline Ratio

Advances	Declines	Unchanged	Ratio
1,184	1,740	114	0.68:1

Sector updates

Sectors	Realty	Metal	PSU
% Change	-2.62%	-1.94%	-0.79%

Exchange Volumes

Exchange	BSE Cash	NSE Cash	NSE F&O
24-Aug-10	4,979.40	14,256.25	1,32,277.27
		Total	1,51,512.92

Implied Volatility for ATM Options

Call		Put	
23-Aug	24-Aug	23-Aug	24-Aug
14.85	15.25	15.5	15.90

Put Call Ratio for (Open Interest)

	23-Aug	24-Aug
Nifty Aug	2.40	2.41
All Expiry	1.72	1.73

FII - MF Activity as on 24-Aug-10 (Prov)

	FII (Cr)	DII (Cr)
Cash	191	-690
F&O	1,470	-
Net	1,661	-690
FII		
Ind Fut	-1,160	-
Ind Options	2,836	-
Stock Fut	-218	-
Stk Options	11	-

World Markets

Indices	Current	Net Change	% Change
Dow Jones	10,040.45	-133.96	-1.32%
S & P 500	1,051.87	-15.49	-1.45%
Nasdaq	2,123.76	-35.87	-1.66%
FTSE	5,155.95	-78.89	-1.51%
CAC	3,491.11	-62.12	-1.75%
DAX	5,935.44	-75.47	-1.26%
Hang Seng*	20,658.71	-230.3	-1.10%

* Indices at 7:45 AM

Currency

Forex	Current	Net Change	% Change
US Dollar*	46.91	0.27	0.58%

* Current levels at that point of time

Emkay Global Financial Services Ltd.

Paragon Center, H -13 -16, 1st Floor, Pandurang Budhkar Marg, Worli, Mumbai – 400 013.
Tel.: 6612 1212 Fax: 6624 2410

DISCLAIMER

Emkay Global Financial Services Ltd. (Emkay) has two separate independent equity research groups: Institutional Equities and Private Client Group. This document has been prepared by Emkay – Private Client Group (Emkay -PCG). Affiliates of Emkay Institutional Group may have issued other reports that are inconsistent with and reach different conclusions from the information presented in this report. The views and opinions expressed in this document may or may not match or may be contrary with the views, estimates, rating and target price of the Institutional Equities Research Group of Emkay Global Financial Services Ltd. This document is not for public distribution and has been furnished to you solely for your information and any review, re-transmission, circulation or any other use is strictly prohibited. Persons into whose possession this document may come are required to observe these restrictions. This document is subject to changes without prior notice and is intended only for the person or entity to which it is addressed to and may contain confidential information and/or privileged material. We are not soliciting any action based upon this material. This report is not to be construed as an offer to sell or the solicitation of an offer to buy any security in any jurisdiction where such an offer or solicitation would be illegal. It is for the general information of clients of Emkay -PCG. It does not constitute a personal recommendation or take into account the particular investment objectives, financial situations, or needs of individual clients. Though disseminated to all the customers simultaneously, not all customers may receive this report at the same time. Emkay-PCG will not treat recipients as customers by virtue of their receiving this report. We have reviewed the report, and in so far as it includes current or historical information, it is believed to be reliable. It should be noted that the information contained herein is from publicly available data or other sources believed to be reliable. Neither Emkay, nor any person connected with it, accepts any liability arising from the use of this document. This document is prepared for assistance only and is not intended to be and must not alone be taken as the basis for any investment decision. The recipients of this material should rely on their own investigations and take their own professional advice. Price and value of the investments referred to in this material may go up or down. Past performance is not a guide for future performance. Opinions expressed are our current opinions as of the date appearing on this material only. We do not undertake to advise you as to any change of our views expressed in this document. While we would endeavor to update the information herein on a reasonable basis, Emkay, its subsidiaries and associated companies, their directors and employees are under no obligation to update or keep the information current. Also there may be regulatory, compliance, or other reasons that may prevent Emkay and its affiliates from doing so. Prospective investors and others are cautioned that any forward-looking statements are not predictions and may be subject to change without notice. Emkay and its affiliates, officers, directors, and employees may: (a) from time to time, have long or short positions in, and buy or sell the securities thereof, of company (ies) mentioned herein or (b) be engaged in any other transaction involving such securities and earn brokerage or other compensation or act as a market maker in the financial instruments of the company (ies) discussed herein or act as advisor or lender / borrower to such company (ies) or have other potential conflict of interest with respect to any recommendation and related information and opinions. The analyst for this report certifies that all of the views expressed in this report accurately reflect his or her personal views about the subject company or companies and its or their securities, and no part of his or her compensation was, is or will be, directly or indirectly related to specific recommendations or views expressed in this report.

Analyst's holding in the stocks mentioned in the report: **NIL**
