

DAILY ROUND-UP

For Private Circulation Only

THURSDAY | JANUARY 28, 2010

Phone : +91 33 2359 4612
 +91 33 2359 4614
 +91 33 2358 1953
 E-mail : research@shriraminsight.com



Shriram Market Analysis
 & Research Team

Indian Market

INDICES	Close	Previous
S&P CNX Nifty	4853.1	5007.9
SENSEX	16289.82	16780.46

Sectoral Indices

INDICES	Close	Previous
BSE IT	4991.76	5121.76
BSE BANK	9296.34	9702.73
BSE FMCG	2783.74	2803.73
BSE PSU	9346.92	9717.47
BSE METAL	16050.57	17042.31

Asian Market

INDICES	Close	Previous
Nikkei225	10252.08	10325.28
HangSeng	20033.07	20109.33
StraitTimes	2706.26	2740.33
Shanghai	2986.6	3019.39
Kospi	1625.48	1637.34

Exchange Turnover (Rs. in Crore)

INDICES	Current	Previous
NSE Cash	18732.59	13348.96
NSE F&O	158503.98	92202.15

Previous FII Positions

ACTIVITIES	Cash	F&O
NET BUY	-	14.90
NET SELL	1002.60	-

Top Gainers

SCRIP NAME	Close	Previous
------------	-------	----------

NO RECORDS

Top Losers

SCRIP NAME	Close	Previous
M&M	1000.00	1071.25
TATAMOTORS	729.20	768.65
TATASTEEL	579.50	609.90
HINDALCO	151.80	159.20

Stock markets have extended their last five days' losing streak in the opening session as they played a catch-up with rest of its Asian peers which had witnessed a sell-off last day as the Indian stock markets were closed on account of Republic Day. The weakness also showed in small and mid-cap shares. Shares from interest rate sensitive sectors like Banking, Realty and Auto pack dominated the market fall. However select FMCG shares gained on defensive buying. The weakness continued in early afternoon session also where heavy selling pressure propelled the Nifty to cross below 4900 level. The markets witnessed an intensified selling pressure in afternoon also as sentiment remained edgy with latest quarterly earnings from select pivots falling short of street estimates and following the recent selling drive by the foreign institutional investors but in late afternoon markets were slightly up from day's low and Nifty was trading near 4900 level but the momentum was not there to overcome the weakness and closed in red terrain. Stocks like M&M, TATAMOTORS, TATASTEEL, HINDALCO were the major losers amongst the Nifty stocks without the presence of any single gainer.

Economic News

- ❖ Crude Oil traded at US\$ 74.75 per barrel and Rupee traded at Rs.46.36 against each US\$.

Corporate News

- ❖ **State Bank of India** (NSE : SBIN) has declared interim dividend at the rate of Rs 10 per share (100%) for the year ending 31 March 2010.
- ❖ **HCL Infosystems Ltd** (NSE : HCL-INSYS) has declared second interim dividend at the rate of Rs. 2 per share (100%) for the year 2009-2010.
- ❖ **GlaxoSmithkline Consumer Healthcare Ltd** (NSE : GSKCONS) has recommended final dividend at the rate of Rs. 18 per share (180%).
- ❖ **Patel Engineering Ltd** (NSE : PATELENG) has declared interim dividend at the rate of Rs 2 per share (200%) for the year 2009-2010.
- ❖ **Lanco Infratech Ltd** (NSE : LITL) has secured contract worth Rs 5,675 crore from Lanco Mahanadi Power, a subsidiary of the company in connection with the setting up of their Pulverized Coal Fired Power Plant of 2 x 660 MW Capacity to be located in the State of Maharashtra.
- ❖ **TRF Limited** (NSE:TRF) has secured two orders aggregating Rs 611.62 crore from state-run NTPC for supply installation and commissioning of its coal handling plants.

- ❖ **Edelweiss Capital Limited** (NSE: EDELWEISS) has entered into an agreement to acquire Anagram Capital for Rs. 164 crore in an all cash transaction.
- ❖ **Steel Authority of India Ltd** (NSE : SAIL) has declared interim dividend at the rate of Rs. 1.60 per share (16%) for the Financial Year 2009-10.
- ❖ **Punjab National Bank** (NSE: PNB) has declared Interim Dividend of Rs. 10/- per equity share of Rs. 10/- each i.e. @ 100% of the paid up capital for the F.Y. 2009-10.

Global News

- ❖ **SAP posts net profit of \$1.02 bln**
SAP AG has reported a 12% drop in Q4 net profit. Its net income declined to 727 million euros from 830 million euros on YoY basis. Total revenue dropped 9% to 3.19 billion euros as software revenue dropped 15% to 1.12 billion euros.
- ❖ **Japan's exports surged**
Japan's exports grew an unadjusted 12.1% in December yoy basis and imports for the month were 5.5% lower, for which the trade surplus grew to 545.3 billion yen (\$6.1 billion).
- ❖ **S.korea current account surplus at \$42.67 bln.**
South Korea posted a record annual figure for its current-account surplus. The country's current-account surplus hit \$42.67 billion for the year, a sharp change from the \$5.78 billion deficit reported in 2008. Exports fell 13.7% to \$373.6 billion, but imports declined 25.7% to \$317.5 billion.
- ❖ **Australia's retail prices rose**
Australia's consumer prices in October-December quarter rose 0.5% from the prior period. For all of 2009, Australia's consumer price index rose 2.1%.

Market Talk

SAIL Q3DFY10 net-profit up 99%

Steel Authority of India's Q3 FY10 net profit at Rs 1,675.5 crore versus Rs 843.3 crore, was up 98.68%, on yoy basis. Its net sales also edged higher by 12.35%.

Its net sales also edged higher by 12.35% at Rs 9,878.7 crore as against Rs 8,792.7 crore on yoy basis.

The company's bottomline was marginally above the estimates while revenues in line with estimates.

Employee cost at Rs 1,571 crore vs Rs 1,746 crore.

Its operating profit margin now stands at 26.1% from 12.8%.

Raw Material cost at Rs 3,823 crore as against Rs 5,880 crore.

Result Announcement

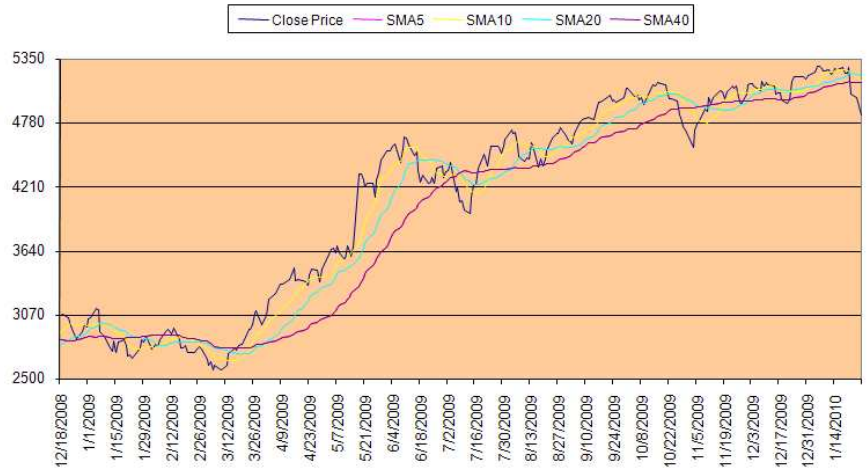
COMPANY	PERIOD	PROFIT AFTER TAX			NET SALES		
		CURR	PREV	% CHN	CURR	PREV	% CHN
NMDC Limited	Q3FY10(YOY)	859.99	1424.95	-39.65%	1587.58	2337.5	-32.08%
Steel Authority of India Ltd.	Q3FY10(YOY)	1675.55	843.34	98.68%	9697.14	8852.26	9.54%
Hindustan Unilever Limited	Q3FY10(YOY)	649.11	615.74	5.42%	4504.26	4307.71	4.56%
Infrastructure Development Finance Company Limited	Q3FY10(YOY)	240.1	172.67	39.05%	880.76	791.3	11.31%
Power Grid Corporation of India Limited	Q3FY10(YOY)	487.84	372.35	31.02%	1525.41	1477.44	3.25%
C & C Constructions Limited	Q3FY10(YOY)	19.64	8.44	132.70%	280.66	163.94	71.20%
LIC Housing Finance Ltd	Q3FY10(YOY)	153.58	134.33	14.33%	833.61	734.33	13.52%
Sundaram Clayton Limited	Q3FY10(YOY)	5.19	-2.84	282.75%	142.36	108.36	31.38%
Mahindra & Mahindra Ltd.	Q3FY10(YOY)	413.7	1.19	34664.71%	4478.7	2506.25	78.70%
Lloyds Steel Industries Ltd.	Q3FY10(YOY)	39.16	-113.84	134.40%	728.82	660.8	10.29%
Aarti Drugs Ltd.	Q3FY10(YOY)	4.8	0.55	772.73%	117.03	91.61	27.75%
Deepak Fertilizers and Petrochemicals Corporation Limited	Q3FY10(YOY)	52.86	22.38	136.19%	362.08	363.43	-0.37%
Redington (India) Limited	Q3FY10(YOY)	24.01	18.66	28.67%	1545.53	1361.05	13.55%
Tata Coffee Limited	Q3FY10(YOY)	13.97	12.22	14.32%	76.46	65.1	17.45%
Jet Airways (India) Ltd.	Q3FY10(YOY)	105.8	-214.18	149.40%	2722.68	2908.87	-6.40%
TV Today Network Limited	Q3FY10(YOY)	13.69	8.67	57.90%	70.35	65.26	7.80%
Electrotherm (India) Ltd.	Q3FY10(YOY)	7.84	5.77	35.88%	439.1	356.9	23.03%
Himatsingka Seide Ltd	Q3FY10(YOY)	3.35	-20.99	115.96%	141.48	123.75	14.33%
Cadila Healthcare Limited	Q3FY10(YOY)	125.32	72.24	73.48%	460.4	368.1	25.07%
Godrej Industries Ltd.	Q3FY10(YOY)	16.91	-3.39	598.82%	203.68	243.64	-16.40%
Hero Honda Motors Ltd.	Q3FY10(YOY)	535.77	300.42	78.34%	3814.42	2874.04	32.72%
Bharat Bijlee Ltd.	Q3FY10(YOY)	7.4	13.33	-44.49%	161.32	140.06	15.18%
Gokul Refoils and Solvent Limited	Q3FY10(YOY)	18.35	-15.37	219.39%	861.98	530.65	62.44%
HCL Infosystems Ltd	Q3FY10(QOQ)	57.5	65.65	-12.41%	3007.8	2983.35	0.82%
Jyoti Structures Ltd	Q3FY10(YOY)	23.36	18.06	29.35%	508.71	430.22	18.24%
Gujarat Alkalies and Chemicals Ltd.	Q3FY10(YOY)	19.31	32.45	-40.49%	309.38	319.12	-3.05%
Prithvi Information Solutions Limited	Q3FY10(YOY)	17.6	8.97	96.21%	350.66	559.59	-37.34%
GlaxoSmithKline Consumer Healthcare Limited	Q3FY10(YOY)	33.68	32.58	3.38%	418.12	333.37	25.42%
Oriental Hotels Ltd	Q3FY10(YOY)	8.26	10.97	-24.70%	52.84	57.87	-8.69%
Cummins India Ltd.	Q3FY10(YOY)	148.16	133.34	11.11%	814.83	749.52	8.71%
Sterlite Industries (India) Limited	Q3FY10(YOY)	46.59	204.01	-77.16%	3611.99	2583.08	39.83%
India Glycols Ltd	Q3FY10(YOY)	6.82	-70.87	109.62%	281.49	196.43	43.30%
First Leasing Company of India Ltd	Q3FY10(YOY)	9.46	8.64	9.49%	39.89	43.9	-9.13%
D. B. Corp Limited	Q3FY10(YOY)	54.03	-	-	271.6	-	-
Indiabulls Financial Services Limited	Q3FY10(QOQ)	57.12	62.34	-8.37%	291.8	256	13.98%
Liberty Shoes Ltd	Q3FY10(YOY)	2.6	2.51	3.59%	66.63	70.06	-4.90%
Shriram EPC Limited	Q3FY10(YOY)	7.44	7.17	3.77%	238.29	229.24	3.95%
Tata Teleservices (Maharashtra) Limited	Q3FY10(QOQ)	-100.76	-107.98	6.69%	549.28	498.32	10.23%
Shri Lakshmi Cotsyn Limited	Q3FY10(YOY)	22.63	17.08	32.49%	370.68	287.52	28.92%
Hotel Leela Venture Ltd.	Q3FY10(YOY)	28.86	20.5	40.78%	126.46	121.13	4.40%
Hindalco Industries Ltd.	Q3FY10(YOY)	427.1	544.8	-21.60%	5286.1	4080.17	29.56%

COMPANY	PERIOD	PROFIT AFTER TAX			NET SALES		
		CURR	PREV	% CHN	CURR	PREV	% CHN
Wockhardt Limited	Q3FY10(YOY)	-159.96	-386.32	58.59%	395.44	373.71	5.81%
Alembic Limited	Q3FY10(YOY)	9.04	2.08	334.62%	264.98	282.69	-6.26%
Pantaloon Retail (India) Ltd.	Q3FY10(YOY)	50.67	33.54	51.07%	1912.84	1525.68	25.38%
Hercules Hoists Limited	Q3FY10(YOY)	6.71	5.48	22.45%	23.23	23.92	-2.88%
Indiabulls Securities Limited	Q3FY10(YOY)	11.44	20.77	-44.92%	68.28	71.11	-3.98%
Gujarat State Petronet Limited	Q3FY10(YOY)	115.36	27.63	317.52%	268.49	117.43	128.64%
KEC International Limited	Q3FY10(YOY)	41.99	24.97	68.16%	937.65	886.31	5.79%
Allcargo Global Logistics Limited	Q3FY10(YOY)	23.25	30.64	-24.12%	138.72	141.27	-1.81%
Shasun Chemicals and Drugs Ltd.	Q3FY10(YOY)	10.5	-13.49	177.84%	144.02	130.68	10.21%
Firstsource Solutions Limited	Q3FY10(YOY)	10.18	-0.94	1182.98%	166.43	141.15	17.91%
Sarda Energy & Minerals Limited	Q3FY10(YOY)	34.2	-	-	153.72	-	-
Supreme Petrochem Ltd	Q3FY10(YOY)	13.84	-46.68	129.65%	396.66	277.1	43.15%
Patel Engineering Limited	Q3FY10(YOY)	29.98	35.09	-14.56%	416.3	317.14	31.27%
Indoco Remedies Limited	Q3FY10(YOY)	7.73	0.63	1126.98%	95.7	77.92	22.82%
Binani Cement Limited	Q3FY10(YOY)	57.17	8.49	573.38%	402.33	360.03	11.75%
Future Capital Holdings Limited	Q3FY10(YOY)	3.93	6.25	-37.12%	11.94	37.5	-68.16%
RPG Cables Ltd	Q3FY10(YOY)	40.89	-2.35	1840.00%	73.14	81	-9.70%
Globus Spirits Limited	Q3FY10(QOQ)	5.4	5.16	4.65%	97.14	80.97	19.97%
Century Textiles & Industries Ltd	Q3FY10(YOY)	59.64	23.14	157.74%	1068.1	879.79	21.40%
Adani Power Limited	Q3FY10(QOQ)	72.48	0.07	103442.86%	233.59	-	-
Gujarat Mineral Development Corporation Limited	Q3FY10(YOY)	71.19	74.71	-4.71%	269.7	257.49	4.74%
Dabur India Ltd	Q3FY10(YOY)	113.07	104.72	7.97%	764.3	673.6	13.46%
Dewan Housing Finance Corporation Ltd	Q3FY10(YOY)	40.16	23.22	72.95%	240.29	182.39	31.75%
Transformers And Rectifiers (India) Limited	Q3FY10(YOY)	11.17	9.27	20.50%	131.49	96.83	35.79%
Hindustan Motors Ltd.	Q3FY10(YOY)	-24.89	10.99	-326.48%	149.11	110.23	35.27%
Madras Fertilizers Ltd	Q3FY10(YOY)	15.62	-84.76	118.43%	379.87	250.48	51.66%
Garden Silk Mills Ltd.	Q3FY10(YOY)	7.59	20.41	-62.81%	664.77	418.6	58.81%

COMPANY	PERIOD	PROFIT AFTER TAX			NET INTEREST INCOME		
		CURR	PREV	% CHN	CURR	PREV	% CHN
State Bank of India	Q3FY10(YOY)	2479.05	2478.42	0.03%	6316.3	5758.19	9.69%
Bank of Baroda	Q3FY10(YOY)	832.49	708.37	17.52%	1601.23	1461.84	9.54%
Union Bank of India	Q3FY10(YOY)	534.13	671.74	-20.49%	1064.67	1128.35	-5.64%
Punjab National Bank	Q3FY10(YOY)	1011.31	1005.82	0.55%	2329.1	1967.35	18.39%

Index Chart

Index Snapshot



- ❖ Domestic bourses opened sharply lower tracking the weak global cues. The BSE Sensex has slipped below the 16650 mark the NSE Nifty below the 4950 mark in the early trade. The broader market indices also witnessed the selling heat in the opening trade. The weakness persisted in late morning session also. Investors were cautious ahead of January F&O series expiry. The weak Asian markets also added with the negative sentiments. The most selling pressure was seen among the Banking, Auto, Metal and Realty stocks. In early afternoon session Nifty lost more than 100 points to touch below 4900 level, however stocks like PPOWERGRID, SUZLON, ITC, TCS were trading with gains. In afternoon trading session there was no exception of weakness as all round selling pressure bogged down the market further. The broader indices also declined in-line with benchmark indices. In late afternoon markets were marginally up but the sell-off continued led by the all Bse sectoral indices mainly by Metal, Banking stocks, Capital goods, Realty stocks and ultimately the weak domestic bourses closed in red.
- ❖ NSE Nifty touched an intra-day high of 5008.50 and low of 4833.05 while BSE Sensex touched an intra-day high of 16708.60 and low of 16230.85
- ❖ Finally Nifty ended lower by 154.80 points at 4853.10 and Sensex closed lower by 490.64 points at 16289.82
- ❖ There were no gainers where as M&M, TATAMOTORS, TATASTEEL, HINDALCO were the major losers among the Nifty stocks.
- ❖ Nifty may find support at around 4820 and resistance at around 5000.

INDEX	LTP	PREVIOUS CLOSE	%CHANGE
SENSEX	6289.82	16780.46	-2.92%
S&P CNX NIFTY	4853.10	5007.90	-3.09%
CNX NIFTY JUNIOR	9801.65	10167.85	-3.60%
CNX IT	5599.00	5799.30	-3.45%
BANK NIFTY	8329.80	8696.60	-4.22%
CNX 100	4784.40	4941.15	-3.17%
S&P CNX DEFTY	3626.90	3757.80	-3.48%
S&P CNX 500	4125.50	4278.55	-3.58%
CNX MIDCAP	7093.70	7373.00	-3.79%
NIFTY MIDCAP 50	2492.25	2602.40	-4.23%

Top Gainer

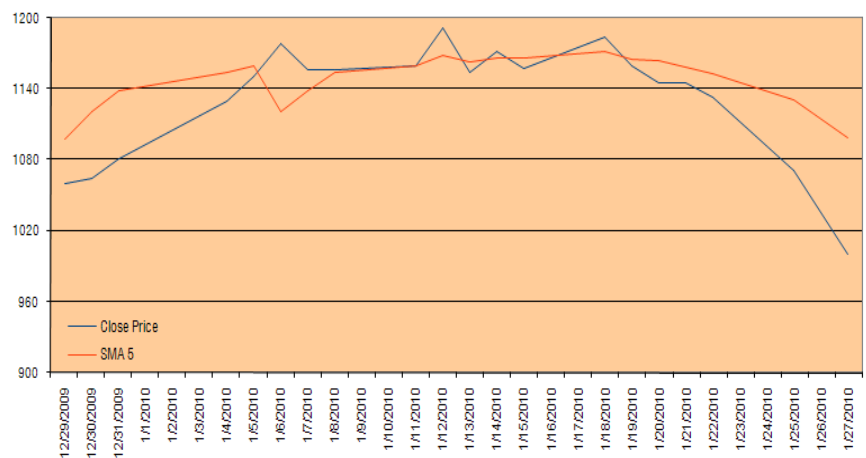
Market Gainer

❖ No Records

Top Loser

Market Loser

- ❖ M&M finished as worst performer. The scrip touched an intra-day high of Rs 1074 and low of Rs 995. The total traded volume for the scrip was 1551416 shares. It closed down by 6.65% to Rs1000
- ❖ Immediate short-term support for the counter exists at around Rs 900.



Derivative Watch

- ❖ Nifty January series futures witnessed short position build-up. Open Interest has been increased by 74484 contracts at the end of the day.
- ❖ Long position build up for the January series has been observed in ROLTA.
- ❖ Short build for the January series has been witnessed in BHARTIARTL, HEROHONDA, TATAMOTORS, HDFCBANK, HDFC, KOTAKBANK, MCDOWELL-N, SESAGOA.
- ❖ Position unwinding for January series has been observed in CUMMINSIND, ASIANPAINT, IVRCLINFRA, NEYVELILIG, HDIL, BANKBARODA, DLF, RCOM.

Derivative Watch

SYMBOL	Expiry Date	LTP	Prev. LTP	Change in	(%) change	Open Interest*	Prev. Open Interest	Change in*	(%) change
NIFTY	28-Jan-10	4835	5002.05	-167.05	-3.34%	508316	433832	74484	17.17%
ROLTA	28-Jan-10	191.3	189.15	2.15	1.14%	982	979	3	0.31%
BHARTIARTL	28-Jan-10	321.1	330	-8.9	-2.70%	20459	18641	1818	9.75%
HEROHONDA	28-Jan-10	1542.8	1608.85	-66.05	-4.11%	9710	8029	1681	20.94%
TATAMOTORS	28-Jan-10	710.6	766.7	-56.1	-7.32%	12348	11241	1107	9.85%
HDFCBANK	28-Jan-10	1581	1655.25	-74.25	-4.49%	9351	8428	923	10.95%
HDFC	28-Jan-10	2306	2385.65	-79.65	-3.34%	10610	9801	809	8.25%
KOTAKBANK	28-Jan-10	762	777.55	-15.55	-2.00%	2849	2080	769	36.97%
MCDOWELL-N	28-Jan-10	1214	1252.25	-38.25	-3.05%	2989	2409	580	24.08%
SESAGOA	28-Jan-10	354.5	374.25	-19.75	-5.28%	5425	4876	549	11.26%
ABB	28-Jan-10	771.05	814.3	-43.25	-5.31%	2520	2058	462	22.45%
GRASIM	28-Jan-10	2542.5	2608.25	-65.75	-2.52%	3059	2665	394	14.78%
GAIL	28-Jan-10	388.7	399.45	-10.75	-2.69%	2486	2221	265	11.93%
AUROPHARMA	28-Jan-10	849.5	890	-40.5	-4.55%	1414	1158	256	22.11%
ZEEL	28-Jan-10	261	265.75	-4.75	-1.79%	1070	869	201	23.13%
CESC	28-Jan-10	394.5	410.5	-16	-3.90%	769	630	139	22.06%
TECHM	28-Jan-10	931.25	1042.85	-111.6	-10.70%	839	716	123	17.18%
UNIONBANK	28-Jan-10	257.3	264.85	-7.55	-2.85%	1328	1206	122	10.12%
INDIANB	28-Jan-10	171	171.6	-0.6	-0.35%	615	525	90	17.14%
DRREDDY	28-Jan-10	1098	1121.45	-23.45	-2.09%	827	750	77	10.27%
CUMMINSIND	28-Jan-10	446	435.3	10.7	2.46%	154	158	-4	-2.53%
ASIANPAINT	28-Jan-10	1780	1779.65	0.35	0.02%	167	184	-17	-9.24%
IVRCLINFRA	28-Jan-10	321	318.75	2.25	0.71%	2066	2402	-336	-13.99%
NEYVELILIG	28-Jan-10	150.05	159.1	-9.05	-5.69%	1334	1679	-345	-20.55%
HDIL	28-Jan-10	305	335.25	-30.25	-9.02%	10214	10612	-398	-3.75%
BANKBARODA	28-Jan-10	519.5	531	-11.5	-2.17%	1269	1687	-418	-24.78%
DLF	28-Jan-10	313.65	344.05	-30.4	-8.84%	13082	13531	-449	-3.32%
RCOM	28-Jan-10	172.75	179	-6.25	-3.49%	20656	21174	-518	-2.45%
TATASTEEL	28-Jan-10	558.85	606.2	-47.35	-7.81%	12470	12994	-524	-4.03%
SBIN	28-Jan-10	1978.7	2092.65	-113.95	-5.45%	19383	19940	-557	-2.79%
UNITECH	28-Jan-10	70	77.2	-7.2	-9.33%	12144	12716	-572	-4.50%
RELINFRA	28-Jan-10	1029.65	1063.05	-33.4	-3.14%	11283	11893	-610	-5.13%
IDFC	28-Jan-10	144.6	149.55	-4.95	-3.31%	3045	3795	-750	-19.76%
EDUCOMP	28-Jan-10	635.1	704.7	-69.6	-9.88%	3812	4723	-911	-19.29%
ESSAROIL	28-Jan-10	134.2	143.2	-9	-6.28%	10696	11610	-914	-7.87%
SUZLON	28-Jan-10	72.8	76.1	-3.3	-4.34%	14043	14964	-921	-6.15%
HINDPETRO	28-Jan-10	343.55	352.15	-8.6	-2.44%	3542	4513	-971	-21.52%
GTL	28-Jan-10	407.25	416.65	-9.4	-2.26%	1295	2291	-996	-43.47%
ISPATIND	28-Jan-10	19	20.8	-1.8	-8.65%	3954	4955	-1001	-20.20%
ICICIBANK	28-Jan-10	783.3	832.15	-48.85	-5.87%	17482	18602	-1120	-6.02%
M&M	28-Jan-10	1009	1070.9	-61.9	-5.78%	6062	8264	-2202	-26.65%
RELIANCE	28-Jan-10	1023.05	1043.05	-20	-1.92%	29094	32382	-3288	-10.15%
WELGUJ	28-Jan-10	254.5	270.05	-15.55	-5.76%	3445	7452	-4007	-53.77%
GLAXO	28-Jan-10	1525	1527.05	-2.05	-0.13%	105	143	-38	-26.57%
SUNTV	28-Jan-10	367.25	378	-10.75	-2.84%	135	181	-46	-25.41%
LT	28-Jan-10	1449	1493.3	-44.3	-2.97%	14984	15039	-55	-0.37%
TULIP	28-Jan-10	949.25	951.5	-2.25	-0.24%	218	299	-81	-27.09%
TITAN	28-Jan-10	1475.05	1501.6	-26.55	-1.77%	317	415	-98	-23.61%
CONCOR	28-Jan-10	1193	1245.65	-52.65	-4.23%	181	296	-115	-38.85%
BHUSANSTL	28-Jan-10	1409.9	1524	-114.1	-7.49%	477	594	-117	-19.70%

* Provisional Data

Bulk Deals

DATE	SCRIP NAME	BUYER/SELLER	BUY/SELL	QNTY.	AVERAGE RATE
25-Jan-10	HYDRBADIND	HSBC MUTUAL FUND	BUY	54000	627.7
25-Jan-10	ITI	NAMAN SECURITIES & FINANCE PVT. LTD	BUY	2042	60.85
25-Jan-10	KSERAPRO	SUSHMA KAPUR (PROP. SHIVAM INVESTMENT)	BUY	1668000	13.12
25-Jan-10	RKFORGE	RAMKRISHNA FORGINGS EMPLOYEE WELFARE TRUST	BUY	492446	137.05
25-Jan-10	ISPATIND	JAYPEE CAPITAL SERVICES LTD.	SELL	224478	21.1
25-Jan-10	RKFORGE	BASUKI PORTFOLIO PRIVATE LIMITED	SELL	500000	137.05
25-Jan-10	THINKSOFT	REGENT FINANCE CORPORATION PVT. LTD.	SELL	2000	483.42

Forthcoming Events

□ ANNUAL/QUARTERLY RESULTS OF THE FOLLOWING COMPANIES DUE ON 29/01/2010

RASHTRIYA CHEMICALS AND FERTILIZERS LTD.
SHIVAM AUTOTECH LIMITED
PAREKH ALUMINEX LIMITED
AARVEE DENIMS & EXPORTS LIMITED
INFO EDGE (INDIA) LIMITED
MBL INFRASTRUCTURES LIMITED
DAAWAT LT FOODS LIMITED
AFTEK LIMITED
AHMEDNAGAR FORGINGS LTD
AMTEK AUTO LTD
APOLLO TYRES LTD
INFO-DRIVE SOFTWARE LIMITED
TRF LIMITED
ADVANI HOTELS & RESORTS (INDIA) LIMITED
BALMER LAWRIE & CO. LTD
BERGER PAINTS (I) LTD
BHARTIYA INTERNATIONAL LIMITED
SOBHA DEVELOPERS LIMITED
RUCHIRA PAPERS LIMITED
KRISHNA FILAMENTS LTD
LLOYDS FINANCE LTD.
KARUR VYSYA BANK LTD
KHAITAN ELECTRICALS LIMITED
JBF INDUSTRIES LTD.
JINDAL POLY FILMS LIMITED
JAYANT AGRO ORGANICS LTD.
OMAXE LIMITED
AARTI INDUSTRIES LTD.
HITACHI HOME AND LIFE SOLUTIONS (INDIA) LIMITED
ARCHIES LIMITED
ASHAPURA MINECHEM LTD
ASHOK LEYLAND LTD
THE GREAT EASTERN SHIPPING CO. LIMITED
CINEVISTAAS LIMITED
DCW LTD
DS KULKARNI DEVELOPERS LTD.
EASTERN SILK INDUSTRIES LIMITED
EASTERN SUG & INDS LTD.

EIMCO ELECON (INDIA) LTD.
ESSEL PROPACK LTD.
UFLEX LIMITED
BANCO PRODUCTS (I) LTD
GILLETTE INDIA LIMITED
HIND SYNTEX LTD.
SRHHL INDUSTRIES LIMITED
ETP CORPORATION LTD.
WINDSOR MACHINES LIMITED
DHARANI SUGARS & CHEMICALS LTD
SREE RAYALASEEMA HI-STRENGTH HYPO LIMITED
ALOK INDUSTRIES LIMITED
BHAGYANAGAR INDIA LIMITED
BALRAMPUR CHINI MILLS LTD
BHARAT ELECTRONICS LTD
BEML LIMITED
BHUSHAN STEEL LIMITED
POCHIRAJU INDUSTRIES LIMITED
KNR CONSTRUCTIONS LIMITED
EURO MULTIVISION LIMITED
INDIAN OIL CORPORATION LTD
SHARYANS RESOURCES LTD.
GMR INDUSTRIES LIMITED
ECE INDUSTRIES LIMITED
RELIANCE INFRASTRUCTURE LIMITED
POWER FINANCE CORPORATION LIMITED
ZENITH BIRLA (INDIA) LIMITED
ALPHAGEO (INDIA) LIMITED
VISHAL RETAIL LIMITED
EID PARRY INDIA LTD.
KAUSHALYA INFRASTRUCTURE DEVELOPMENT CORPORATION LIMITED
GLENMARK PHARMACEUTICALS LTD.
GUJARAT NARMADA VALLEY FERTILIZER CO. LTD.
SEJAL ARCHITECTURAL GLASS LIMITED
RAJ OIL MILLS LIMITED
LCC INFOTECH LIMITED
VARDHMAN TEXTILES LIMITED
BLUE COAST HOTELS AND RESORTS LIMITED
NATIONAL FERTILIZERS LIMITED
PARAMOUNT COMMUNICATIONS LTD
ALKALI METALS LIMITED
HARRISONS MALAYALAM LTD
HINDUSTAN DORR-OLIVER LTD
MINDA INDUSTRIES LIMITED
NEPC INDIA LTD
NRC LTD.
PAREKH PLATINUM LTD
PATSPIN INDIA LTD
AJANTA PHARMA LIMITED
SHIVA TEXYARN LIMITED
ARVIND LIMITED
ABG SHIPYARD LIMITED
SIMPLEX PROJECTS LIMITED
KALPATARU POWER TRANSMISSION LTD
KAMPER CONCAST LTD.
KOPRAN LTD.

THE KARNATAKA BANK LIMITED
LUPIN LIMITED
BILPOWER LIMITED
SIYARAM SILK MILLS LTD
PTL ENTERPRISES LIMITED
RELIANCE POWER LIMITED
CORDS CABLE INDUSTRIES LIMITED
RANE HOLDINGS LIMITED
REGENCY CERAMICS LTD.
RICO AUTO INDUSTRIES LTD
SABERO ORGANICS GUJARAT LTD
SAI TELEVISION LTD
INDUS FILA LIMITED
SURANA TELECOM LTD.
TIMES GUARANTY LIMITED
ORACLE FINANCIAL SERVICES SOFTWARE LIMITED
JENSON & NICHOLSON (INDIA) LTD
SRG INFOTEC (INDIA) LTD.
STAR PAPER MILLS LTD
SUNDRAM FASTENERS LTD
TATA CHEMICALS LTD.
CAMBRIDGE TECHNOLOGY ENTERPRISES LIMITED
NESCO LIMITED
CORE PROJECTS AND TECHNOLOGIES LIMITED
SICAGEN INDIA LIMITED
MAX INDIA LTD
MOSER-BAER (I) LTD
ZYLOG SYSTEMS LIMITED
GSL NOVA PETROCHEMICALS LIMITED
VARDHMAN POLYTEX LIMITED
VENKY'S (INDIA) LIMITED
CAROL INFO SERVICES LIMITED
ZENITH EXPORTS LTD.
KOLTE - PATIL DEVELOPERS LIMITED
ALMONDZ GLOBAL SECURITIES LIMITED
CFL CAPITAL FINANCIAL SERVICES LTD.
DIVI'S LABORATORIES LIMITED
THE STATE TRADING CORPORATION OF INDIA LIMITED
PSL LIMITED
VARDHMAN ACRYLICS LIMITED
NALWA SONS INVESTMENTS LIMITED
JAI BALAJI INDUSTRIES LIMITED
TATA MOTORS LIMITED
GULF OIL CORPORATION LIMITED
JMC PROJECTS (INDIA) LTD.
NEPC AGRO FOODS LTD
NEPC TEXTILES LTD.
NIRMA LTD.
ONWARD TECHNOLOGIES LTD
ORCHID CHEMICALS & PHARMACEUTICALS LTD
PANACEA BIOTEC LTD.
MAXWELL INDUSTRIES LIMITED
QUINTEGRA SOLUTIONS LIMITED
TAINWALA CHEMICAL AND PLASTIC (I) LTD
PRECOT MERIDIAN LIMITED
VAIBHAV GEMS LIMITED

PTC INDIA LIMITED
VISHAL EXPORTS OVERSEAS LIMITED
EXCEL CROP CARE LIMITED
R. S. SOFTWARE (INDIA) LIMITED
RUCHI INFRASTRUCTURE LTD.
KOHINOOR FOODS LIMITED
SB&T INTERNATIONAL LTD
SIMPLEX INFRASTRUCTURES LIMITED
KESAR ENTERPRISES LTD.
TANLA SOLUTIONS LIMITED
T T LIMITED
THEMIS MEDICARE LIMITED
ECHNO ELECTRIC AND ENGINEERING CO LTD
K S OILS LIMITED
KRISHNA ENGINEERING WORKS LTD
HE MOTOR & GENERAL FINANCE LTD
MAHANAGAR TELEPHONE NIGAM LTD.
KITPLY INDUSTRIES LTD
BLUE BLENDS (I) LTD
NORTHGATE TECHNOLOGIES LIMITED
KARUTURI GLOBAL LIMITED
GKW LIMITED
PROCTER & GAMBLE HYGIENE AND HEALTH CARE LIMITED
GEODESIC LIMITED
LUMAX AUTOMOTIVE SYSTEMS LIMITED
GREAVES COTTON LIMITED
SAH PETROLEUMS LIMITED
GUFIC BIOSCIENCES LIMITED
ASTRA MICROWAVE PRODUCTS LIMITED
NTPC LIMITED
S.A.L. STEEL LIMITED
DECCAN CHRONICLE HOLDINGS LTD.
GATEWAY DISTRI PARKS LIMITED
ALLSEC TECHNOLOGIES LIMITED
SHOPPER'S STOP LIMITED
STEEL STRIPS WHEELS LIMITED
SHAH ALLOYS LIMITED
FINANCIAL TECHNOLOGIES (INDIA) LIMITED
MAN INDUSTRIES (INDIA) LTD.
AMTEK INDIA LIMITED
MSP STEEL & POWER LIMITED
SPL INDUSTRIES LIMITED
VIVIMED LABS LIMITED
GOLDIAM INTERNATIONAL LIMITED
SUNFLAG IRON AND STEEL COMPANY LIMITED
AMIT SPINNING INDUSTRIES LIMITED
PETRON ENGINEERING CONSTRUCTION LTD.
BALLARPUR INDUSTRIES LIMITED
PIPAVAV SHIPYARD LIMITED
CIMMCO BIRLA LTD
TATA COMMUNICATIONS LIMITED
UPPER GANGES SUGAR & INDUSTRIES LTD
AURIONPRO SOLUTIONS LIMITED
BANNARI AMMAN SPINNING MILLS LIMITED
PBA INFRASTRUCTURE LIMITED
BOMBAY RAYON FASHIONS LIMITED

PVR LIMITED
EDUCOMP SOLUTIONS LIMITED
ADITYA BIRLA NUVO LIMITED
RELIANCE NATURAL RESOURCES LIMITED
NITCO LIMITED
VAKRANGEE SOFTWARES LIMITED
MALU PAPER MILLS LIMITED
GANGOTRI TEXTILES LIMITED
PRIME FOCUS LIMITED
PLETHICO PHARMACEUTICALS LIMITED
NUMERIC POWER SYSTEMS LIMITED
PIONEER EMBROIDERIES LIMITED
GTN TEXTILES LIMITED
UNITY INFRAPROJECTS LIMITED
ATN INTERNATIONAL LIMITED
VALECHA ENGINEERING LIMITED
MANUGRAPH INDIA LTD.
VOLTAMP TRANSFORMERS LIMITED
ANANT RAJ INDUSTRIES LIMITED
MICRO TECHNOLOGIES (INDIA) LIMITED
ICSA (INDIA) LIMITED
ASSAM COMPANY LIMITED
ELECON ENGINEERING CO LTD
TALBROS AUTOMOTIVE COMPONENTS LIMITED
MCNALLY BHARAT ENGINEERING COMPANY LIMITED
MEGHMANI ORGANICS LIMITED
SUN PHARMACEUTICALS INDUSTRIES LTD
MARKSANS PHARMA LIMITED
HILTON METAL FORGING LIMITED
SWARAJ MAZDA LTD
TAJ GVK HOTELS & RESORTS LIMITED
TECIL CHEMICALS AND HYDRO POWER LTD
EVINIX ACCESSORIES LIMITED
PAGE INDUSTRIES LIMITED
DECOLIGHT CERAMICS LIMITED
ISMT LIMITED
MAN ALUMINIUM LIMITED
PATEL INTEGRATED LOGISTICS LIMITED
ONMOBILE GLOBAL LIMITED
ESSAR SHIPPING PORTS & LOGISTICS LIMITED
NEOCURE THERAPEUTICS LTD
IP RINGS LIMITED
KSE LIMITED
THE LAKSHMI MILLS COMPANY LIMITED
MARG LIMITED
TULSYAN NEC LIMITED
HBL POWER SYSTEMS LIMITED
THINKSOFT GLOBAL SERVICES LIMITED
TITAN INDUSTRIES LTD.
TAMILNADU TELECOMMUNICATION LTD
TODAYS WRITING PRODUCTS LIMITED
VARUN SHIPPING CO. LTD.
SIEMENS LTD
LOGIX MICROSYSTEMS LIMITED
EURO CERAMICS LIMITED
MUDRA LIFESTYLE LIMITED

DECCAN CEMENTS LTD
PURAVANKARA PROJECTS LIMITED

□ ANNUAL/QUARTERLY RESULTS OF THE FOLLOWING
COMPANIES DUE ON 30/01/2010

ASHCO NIULAB INDUSTRIES LIMITED
BARAK VALLEY CEMENTS LIMITED
PRECISION PIPES AND PROFILES COMPANY LIMITED
SUJANA UNIVERSAL INDUSTRIES LIMITED
NAHAR CAPITAL AND FINANCIAL SERVICES LIMITED
SITA SHREE FOOD PRODUCTS LIMITED
GI ENGINEERING SOLUTIONS LIMITED
AMRUTANJAN HEALTH CARE LIMITED
OIL INDIA LIMITED
BIMETAL BEARINGS LIMITED
CITY UNION BANK LTD.
RAJ RAYON LIMITED
VITAL COMMUNICATIONS LIMITED
THE SIRPUR PAPER MILLS LTD
SANGAM (INDIA) LTD.
PARSVNATH DEVELOPERS LIMITED
GLORY POLYFILMS LIMITED
NAGREEKA EXPORTS LIMITED
SUZLON ENERGY LIMITED
LUMAX AUTO TECHNOLOGIES LIMITED
RAMGOPAL POLYTEX LTD
TVS SRICHAKRA LIMITED
MAGNUM VENTURES LIMITED
CYBERTECH SYSTEMS AND SOFTWARE LTD.
BIOFIL CHEMICALS & PHARMACEUTICALS LTD.
ATLAS CYCLES (HARYANA) LTD
BGR ENERGY SYSTEMS LIMITED
WINSOME YARNS LTD
ADOR WELDING LIMITED
WHEELS INDIA LTD
UNITECH LTD
BURNPUR CEMENT LIMITED
VIKASH METAL & POWER LIMITED
EVEREST KANTO CYLINDER LIMITED
NAHAR INDUSTRIAL ENTERPRISES LIMITED
ORIENT ABRASIVES LIMITED
KERNEX MICROSYSTEMS (INDIA) LIMITED
TULIP TELECOM LIMITED
BARTRONICS INDIA LIMITED
ROYAL ORCHID HOTELS LIMITED
JAGRAN PRAKASHAN LIMITED
GVK POWER & INFRASTRUCTURE LIMITED
SADBHAV ENGINEERING LIMITED
SURYAJYOTI SPINNING MILLS LIMITED
SUNIL HITECH ENGR. LTD
RELIANCE COMMUNICATIONS LIMITED
SAKUMA EXPORTS LIMITED
GITANJALI GEMS LIMITED
JK CEMENT LIMITED

B. L. KASHYAP AND SONS LIMITED
UTTAM SUGAR MILLS LIMITED
STL GLOBAL LIMITED
NITIN SPINNERS LIMITED
KAMDHENU ISPAT LIMITED
MUNJAL AUTO INDUSTRIES LIMITED
EMAMI LIMITED
DYNAMATIC TECHNOLOGIES LTD.
RAMA NEWSPRINT AND PAPERS LIMITED
LAKSHMI PRECISION SCREWS LIMITED
ENKEI CASTALLOY LIMITED
FIEM INDUSTRIES LIMITED
JHS SVENDGAARD LABORATORIES LIMITED
RESURGERE MINES & MINERALS INDIA LIMITED
STEEL TUBES OF INDIA LIMITED
SU-RAJ DIAMONDS AND JEWELLERY LIMITED
NAHAR SPINNING MILLS LTD.
NAHAR INVESTMENTS AND HOLDING LIMITED
BRANDHOUSE RETAILS LIMITED
MANAKSIA LIMITED
INTERNATIONAL CONSTRUCTIONS LTD.
JIK INDUSTRIES LIMITED
SMS PHARMACEUTICALS LIMITED
GANESH HOUSING CORPORATION LTD.
BROADCAST INITIATIVES LIMITED
LA OPAL ARG LIMITED
ROMAN TARMAT LIMITED
SYNDICATE BANK
THERMAX LTD
HOUSE OF PEARL FASHIONS LIMITED
TAKE SOLUTIONS LIMITED
GRABAL ALOK IMPEX LIMITED
HITECH PLAST LIMITED
MARAL OVERSEAS LTD
SRI ADHIKARI BROTHERS TELEVISION NETWORK LIMITED
KIRI DYES AND CHEMICALS LIMITED
TUBE INVESTMENTS OF INDIA LTD
VALUE INDUSTRIES LIMITED
WEIZMANN LTD
W S INDUSTRIES (I) LTD
VIJAY SHANTHI BUILDERS LIMITED
ANIK INDUSTRIES LIMITED
ARVIND REMEDIES LIMITED
GENESYS INTERNATIONAL CORPORATION LIMITED
PEARL ENGINEERING POLYMERS LIMITED
B.A.G FILMS AND MEDIA LIMITED
NAMASTE EXPORTS LTD
NATH SEEDS LIMITED
OSWAL AGRO MILLS LTD
PUDUMJEE PULP & PAPER MILLS LTD.
TOKYO PLAST INTERNATIONAL LTD
VIDEOCON INDUSTRIES LIMITED
SKM EGG PRODUCTS EXPORT (INDIA) LTD.
SONA KOYO STEERING SYSTEMS LTD.
SUBHASH PROJECTS & MARKETING LTD
SALORA INTERNATIONAL LTD.

PUDUMJEE INDUSTRIES LIMITED
SURYA PHARMACEUTICAL LIMITED
BANK OF MAHARASHTRA
CLASSIC DIAMONDS (INDIA) LIMITED
MONNET ISPAT LTD
SANGHI POLYESTERS LTD.
SHIPPING CORPORATION OF INDIA LTD.
S. KUMARS NATIONWIDE LTD
PRAJAY ENGINEERS SYNDICATE LIMITED
JMT AUTO LIMITED
IOL NETCOM LIMITED
NAGREEKA CAPITAL & INFRASTRUCTURE LIMITED
COX AND KINGS (INDIA) LIMITED
JAGSONPAL PHARMACEUTICALS LTD.
REI SIX TEN RETAIL LIMITED
NCL INDUSTRIES LIMITED
AMBICA AGARBATHIES & AROMA INDUSTRIES LIMITED
CRANES SOFTWARE INTERNATIONAL LIMITED
MSK PROJECTS (INDIA) LIMITED
THE ANDHRA PRADESH PAPER MILLS LIMITED
DWARIKESH SUGAR INDUSTRIES LIMITED
SUPRAJIT ENGINEERING LIMITED
HELIOSMATH HELIOS AND MATHESON INFORMATION TECHNOLOGY LIMITED
SHRIRAM CITY UNION FINANCE LIMITED
JINDAL PHOTO LIMITED
FAME INDIA LIMITED
MERCATOR LINES LIMITED
VARDHMAN HOLDINGS LIMITED
SUBROS LTD
AMAR REMEDIES LIMITED
RAJVIR INDUSTRIES LIMITED
AI CHAMPDANY INDUSTRIES LIMITED
FIRST WINNER INDUSTRIES LIMITED
AUSTRAL COKE & PROJECTS LIMITED
SAVITA OIL TECHNOLOGIES LIMITED
AHLUWALIA CONTRACTS (INDIA) LIMITED
GILLANDERS ARBUTHNOT & COMPANY LIMITED
WEBSOL ENERGY SYSTEMS LIMITED
GUJARAT AMBUJA EXPORTS LIMITED
GUJARAT INDUSTRIES POWER CO. LTD
HOTEL RUGBY LTD.
GRAND FOUNDRY LTD
NICCO CORPORATION LIMITED
BALKRISHNA INDUSTRIES LIMITED
THE BANK OF RAJASTHAN LTD
BHARAT RASAYAN LTD
OSWAL CHEMICALS & FERTILIZERS LTD.
BSEL INFRASTRUCTURE REALTY LIMITED
VISHAL INFORMATION TECHNOLOGIES LIMITED
SHREE PRECOATED STEELS LIMITED
IFB INDUSTRIES LTD.
INDIA NIPPON ELECTRICALS LIMITED
JAIN STUDIOS LIMITED
KABRA EXTRUSION TECHNIK LTD
KAMAT HOTELS (I) LTD

SATHAVAHANA ISPAT LTD
NU TEK INDIA LIMITED
MVL INDUSTRIES LIMITED
COMPUTECH INTERNATIONAL LTD.
ARCHIDPLY INDUSTRIES LIMITED
3M INDIA LIMITED
AUTORIDERS FINANCE LTD
ORIENTAL TRIMEX LIMITED
SUPREME INFRASTRUCTURE INDIA LIMITED
GAMMON INDIA LTD.
GODFREY PHILLIPS INDIA LTD
MURLI INDUSTRIES LIMITED
INSECTICIDES (INDIA) LIMITED
KHAITAN (INDIA) LTD.
KLG SYSTEL LTD.
KDL BIOTECH LIMITED
KOTHARI PRODUCTS LTD.
LAKSHMI VILAS BANK LTD
LML LTD.
MALWA COTTON SPG. MILLS LTD
REI AGRO LIMITED
PADMALAYA TELEFILMS LTD.
21ST CENTURY MANAGEMENT SERVICES LTD
ESS DEE ALUMINIUM LIMITED
PLASTIBLENDS INDIA LIMITED
INDO ASIAN FUSEGEAR LIMITED
GOLDSTONE TECHNOLOGIES LTD.
GOLDEN TOBACCO LIMITED
AGEE GOLD REFINERS LTD.
AUTOLINE INDUSTRIES LIMITED
KSK ENERGY VENTURES LIMITED
PHIL CORPORATION LTD
POLYPLEX CORPORATION LTD.
TELEDATA INFORMATICS LIMITED
ACKRUTI CITY LIMITED
IFGL REFRACTORIES LTD
SOMA TEXTILES & INDUSTRIES LTD.
SUDARSHAN CHEMICAL INDUSTRIES LTD
SUPER FORGINGS & STEELS LTD
RELIANCE CAPITAL LIMITED
RAJESH EXPORTS LTD.
PAE LIMITED
RAISAHEB RECKHCHAND MOHOTA SPINNING & WEAVING MILLS LTD
PEARL POLYMERS LTD
ORIENT PRESS LTD
PARAS PETROFILS LIMITED
SPICE MOBILES LIMITED
HINDUJA VENTURES LIMITED
BANG OVERSEAS LIMITED
ZENITH COMPUTERS LIMITED
ZENITH INFOTECH LTD.
AGRO DUTCH INDUSTRIES LIMITED
ALPS INDUSTRIES LTD.
RAJDARSHAN INDUSTRIES LTD
AUROBINDO PHARMA LTD
GSS AMERICA INFOTECH LIMITED

NOVA IRON & STEEL LTD
GIRDHARILAL SUGAR AND ALLIED INDUSTRIES LTD.
NATIONAL STEEL AND AGRO INDUSTRIES LIMITED
NAVA BHARAT VENTURES LIMITED
LYKA LABS LTD
AML STEEL LIMITED
AVANTI FEEDS LIMITED
HYDRO S & S INDUSTRIES LIMITED
JUPITER BIOSCIENCE LIMITED
RAJAPALAYAM MILLS LIMITED
VIPUL LIMITED
BLUE BIRD (INDIA) LIMITED
AUTOLITE (INDIA) LIMITED
BELL CERAMICS LTD
BLB LIMITED
BATLIBOI LIMITED
DONEAR INDUSTRIES LIMITED
SPENTEX INDUSTRIES LTD
TRICOM INDIA LIMITED
AMBIKA COTTON MILLS LIMITED
SUJANA TOWER LIMITED
LUMAX INDUSTRIES LTD
KND ENGINEERING TECHNOLOGIES LTD.
KEMROCK INDUSTRIES AND EXPORTS LIMITED
TELEDATA TECHNOLOGY SOLUTIONS LIMITED
JD ORGOCHEM LIMITED
STORE ONE RETAIL INDIA LIMITED
ANSAL PROPERTIES & INFRASTRUCTURE LIMITED
ANTARCTICA LTD
ASIAN ELECTRONICS LTD
GAMMON INFRASTRUCTURE PROJECTS LIMITED
GREAT OFFSHORE LIMITED
CORAL INDIA FINANCE & HOUSING LTD
CREST ANIMATION STUDIOS LIMITED
CUBEX TUBINGS LTD.
GUJARAT APOLLO INDUSTRIES LIMITED
ELGI EQUIPMENTS LTD
EUROTEX INDUSTRIES AND EXPORTS LTD
VICEROY HOTELS LIMITED
AXIS-IT&T LIMITED
HANIL ERA TEXTILES LTD
GINNI FILAMENTS LTD
VISU INTERNATIONAL LIMITED

□ ANNUAL/QUARTERLY RESULTS OF THE FOLLOWING
COMPANIES DUE ON 31/01/2010

VARUN INDUSTRIES LIMITED
DHANUS TECHNOLOGIES LIMITED
ROHIT FERRO-TECH LIMITED
LOKESH MACHINES LIMITED
ATLANTA LIMITED
RAMSARUP INDUSTRIES LIMITED
FERTILIZERS AND CHEMICALS TRAVANCORE LTD.
EMPEE DISTILLERIES LIMITED

KAVVERI TELECOM PRODUCTS LIMITED
MVL LIMITED

- ANNUAL/QUARTERLY RESULTS OF THE FOLLOWING COMPANIES DUE ON 01/02/2010

HONEYWELL AUTOMATION INDIA LIMITED

- CORPORATE ACTION OF THE FOLLOWING COMPANIES DUE ON 29/01/2010

Patel Engineering Limited	INTERIM DIVIDEND
HCL Technologies Ltd	INT DIV-RE.1/- PER SHPURPOSE REVISED
Sundaram Clayton Limited	INT DIV-RE.0.50 PER SHAREPURPOSE REVISED

- CORPORATE ACTION OF THE FOLLOWING COMPANIES DUE ON 01/02/2010

Godrej Consumer Products Limited	3RD INT DIV-RE.1/- PR SHRPURPOSE REVISED
Container Corporation of India Limited	INT DIV-RS.6/- PER SHARE
Shree Ashtavinayak Cine Vision Limited	BONUS 4:1
Tata Investment Corporation Ltd.	INT DIV-RS.15 PER SHARE
Steel Authority of India Ltd.	INTERIM DIVIDEND

Investment Picks

□ SCRIPT NAMES

LARGE CAP PICKS

Reliance Industries
HDFC
Maruti
Cipla
Suzlon Energy
Sterlite Industries
Jindal Steel & Power
Unitech
Adani Enterprises
Crompton Greaves

MIDCAP PICKS

Biocon
Sintex Industries
GE Shipping
Indian Hotel
PunjLloyd
IVRCL infrastructures
Texmaco
Renuka
Everonn System
Balrampur Chini
Century Textiles
Fortis Healthcare
Patel Engineering
ING Vysya Bank
IFCI
Jaysree Tea
Anantraj Industries
Prakash Industries

D I S C L A I M E R

This document has been prepared by Shriram Insight Share Brokers Ltd. and is meant for sole use by the recipient and not for circulation. This document is not to be reported or copied or made available to others. The information contained herein is from sources believed reliable. It should not be considered to be taken as an offer to sell or a solicitation to buy any security or as an official confirmation of any transaction. We do not represent that it is accurate or complete and it should not be relied upon as such. This document is prepared for assistance only and is not intended to be and must not alone be taken as the basis for an investment decision. The investments discussed or recommended in this report may not be suitable for all investors. Shriram Insight Share Brokers Ltd stock Recommendation Service is a general recommendation service and is not to be construed as an individual investor specific Portfolio Management and Advisory Service.

The user assumes the entire risk of any use made of this information. Each recipient of this document should arrive at an independent evaluation of an investment in the securities of companies referred to in this document and should consult its own advisors to determine the merits and risks of such an investment.

Shriram Insight Share Brokers Ltd shall not be responsible for any loss or liability incurred to the user as a consequence of his or any other person on his behalf taking any investment decisions based on the information, recommendations, research reports, analysis, quotes, etc. provided on the web site

Shriram Insight Share Brokers Ltd shall also not be liable for errors, omissions or typographical errors, disruption delay, interruption, failure, deletion or defect of/in the Service provided by it.

All Users of the Service in countries other than India understand that by using the Service, they may be violating the local laws in such countries. If the User chooses to access the Service from outside India, he shall be responsible for compliance with foreign and local laws.