

POWER UP YOUR MORNING WITH

# MORNING MANTRA

**CENTRUM**

Your aim is our only target

October 14, 2009

Domestic Indices	Level	% chg
BSE Sensex	17026.7	2.3
BSE Midcap	6378.5	1.2
BSE Smallcap	7449.3	1.1
NSE Nifty	5054.3	2.2

ADRs \$	Price	% chg
Dr. Reddy	20.8	0.1
HDFC Bank	119.8	0.3
ICICI Bank	39.5	0.4
Infosys	47.6	0.5
Satyam	6.3	0.0
Sterlite	17.2	-0.7
Tata Motors	12.0	-1.6

Intl' Indices(08.30IST)	Level	% chg
Dow Jones	9871.1	-0.1
Nasdaq	2139.9	0.0
FTSE	5154.2	-1.1
Nikkei	10051.1	-0.3
Hang Seng	21771.2	1.4
Kospi	1649.2	1.2
SGX Nifty	5094.5	0.8

	Price	% chg
Oil (\$ per barrel)	74.9	1.1
Gold (per ounce in INR)	15935.0	0.6
Re/\$	46.5	-0.2

Top Gainers % (BSE)	Price	% chg
M&M Fin	248.45	12.73
Lanco Infra	520.7	9.3
Ind Info	150.9	6.23
Indian Hot	79.75	5.63
Crompton Greaves	338.4	5.6

Top Losers % (BSE)	Price	% chg
EIH	128.45	-6.55
Exide	96.35	-4.08
Castrol	548.2	-2.27
Ultratech	847.05	-2.27
Indiabulls Real	287.1	-2.1

	Rs. crore
FII Figures	963.13

DII	-274.88
-----	---------

Metal Prices (\$/tn)	Price	%
Copper	6122.5	-2.2
Aluminium	1871.3	-2.1
Zinc	1998.0	-3.3

#### Main Events for the day

US - JP Morgan Results, Retail & business reports

#### International News:

- China's exports declined at the slowest pace in nine months, helping government efforts to sustain the recovery in the world's third-biggest economy. Shipments dropped 15.2 percent in September from a year earlier, the customs bureau said on its Web site today. That compared with a 23.4 percent slide in August. The median estimate of 23 economists surveyed by Bloomberg News was for a 21 percent decline. (Source: Bloomberg)
- Intel, the world's biggest chipmaker, predicted fourth-quarter revenue of as much as \$10.5 billion this quarter, topping the \$9.5 billion average estimate in a Bloomberg survey. The company's gross margin a measure of profitability may reach the highest level this decade. (Source: Bloomberg)
- Asian stocks rose after a better-than-estimated sales forecast at Intel Corp. boosted technology shares, offsetting a decline among financial companies. (Source: Bloomberg)

#### Domestic news:

- Foreign Direct Investment rose by 40.51% in August 2009 compared to the same period last year. (Source: BS)
- Automobile sales for H1FY'10 increased by 14.5% over the same period last year. (Source: BS)

#### Corporate news:

- Aditya Birla Group plans to invest over Rs.4000 crore in future technologies by setting up a Knowledge Park and a branch of the Birla Institute of Technology and Sciences. (Source: BS)
- Glenmark Pharma plans to list its generics subsidiary. (Source: ET)
- Unitech has said that it has booked sales worth Rs.3913 crore in the first six months of the current financial year. (Source: ET)
- United Spirits will raise USD350 million to reduce debt. (Source: ET)
- Piramal Lifesciences has lined up Rs.200 crore for new drug research. (Source: BS)
- GVK Power's Punjab project is expected to achieve financial closure by the end of the month. (Source: BL)

## Results

Company	Purpose
Concor	Results
HDFC Bk	Results

## Insider Trading

Company	Name of Acquirer / Seller	Transaction Date	Buy /Sale	No.of Shares Transacted Quantity	%	Holding after Transaction Quantity	%
ITC Ltd	Yogesh Chander Deveshwar	24/09/2009	B	1383320		1839389	0.04

(Source: BSE)

# Technical Analysis

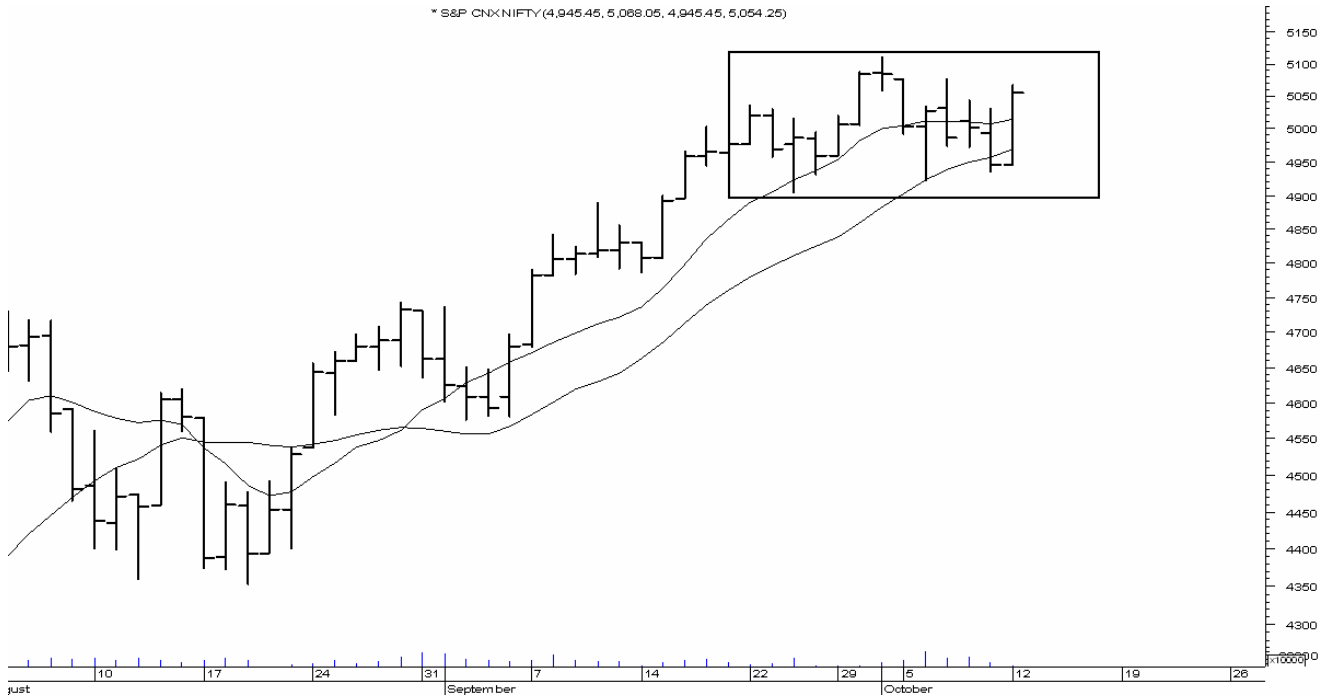
**hitesh.chotalia@centrum.co.in**  
**91-9748776689**

## Trading around 5000

**Nifty: (5054):** The index opened on a positive note and saw strength through out the day's trading. It ended the day with gain of 109 points.

The index has closed above the 10 and 20 dma level. 10 dma = 5015 and 20 dma = 4968. Index closing above the averages should be considered positive in the near term. On the upside index faces resistance around the recent high around 5110. On the downside index has support around 5000 and 4975.

## Conclusion: Bias Positive.



Stock	S1	S2	Close	R1	R2	Action
Nifty Futures	4970	5010	5059	5100	5150	Buy on declines
Axis Bank	985	1000	1013	1030	1045	Buy with stop below S2
Bharti Tele	332	344	351	359	364	Buy on declines
DLF	409	416	425	430	445	Buy with stop below S2
Icici Bank	900	913	920	933	945	Buy with stop below S2
Infosys	2190	2210	2239	2250	2285	Buy with stop below S2
Ongc	1220	1234	1247	1260	1275	Buy with stop below S2
Reliance	2114	2145	2169	2200	2220	Buy with stop below S2
Reliance Cap	920	932	950	960	975	Buy with stop below S2
Telco	529	540	548	557	565	Buy with stop below S2
Tisco	532	540	546	555	562	Buy with stop below S2

**Momentum Calls:**

Stock	Reco Date	Rating	Reco Price	Target	Stop loss	(-) or (+) % age
Axis Bank	25-Sep	Momentum Buy	922	942	Profit Bk	+2.17%
Opto Circit	25-Sep	Momentum Buy	199	204	Profit Bk	+2.52%
Dhan Bank	25-Sep	Momentum Buy	172	177	Profit Bk	+2.91
Icici Bank	29-Sep	Momentum Buy	858	870	Profit Bk	+1.40%
Cipla	29-Sep	Momentum Buy	270	280	Profit Bk	+3.70%
Rel Infra	29-Sep	Momentum Buy	1213	1216	1216	+0.25%
IBreal	30-Sep	Momentum Buy	272	266	Stop Trigg	+2.20%
Ranbaxy	30-Sep	Momentum Buy	406	412	Profit Bk	+1.48%
Siemens	30-Sep	Momentum Buy	556	568	Profit Bk	+2.16%
Punj Lyod	30-Sep	Momentum Buy	269	264	Stop Trigg	-1.86%
Glen Mark	30-Sep	Momentum Buy	236	260	230	Open
DLF	05-Oct	Momentum Sell	430	424	Profit Bk	+1.40%
Tisco	05- Oct	Momentum Sell	505	496	Profit Bk	+1.78%
APIL	06- Oct	Momentum Buy	535	550	Profit Bk	+2.80%
Ranbaxy	06- Oct	Momentum Buy	405			Open
Siemens	06- Oct	Momentum Buy	555	570	Profit Bk	+2.70%
Tisco	07- Oct	Momentum Buy	422	433	Profit Bk	+2.36%
Treveni	07- Oct	Momentum Buy	107	111	111	+3.74%
Welspun	07- Oct	Momentum Buy	268	280	Profit Bk	+4.47%
Tata Tea	07- Oct	Momentum Buy	882	865	960	Open
Voltas	08- Oct	Momentum Buy	155	161	161	+3.87%
APIL	08- Oct	Momentum Buy	555	565	Profit Bk	+1.80%
Adlabs	08- Oct	Momentum Buy	346	340	Stop Trigg	-1.15%
ICICI Bk	08- Oct	Momentum Buy	930	913	Stop Trigg	-1.82%
Mc Leod Russ.	08- Oct	Momentum Buy	217	210	Stop Trigg	-3.22%
Dish TV	09- Oct	Momentum Buy	45	55	42	Open
Bajaj Hind	09- Oct	Momentum Buy	188	200	182	Open

## DERIVATIVE STATISTICS & ANALYSIS

[manoj.abraham@centrum.co.in](mailto:manoj.abraham@centrum.co.in)  
+91 9870988818

➤ Nifty Oct contract ends the Day up by 125 points at A premium of 5.25 points in Oct contracts paring OI by 0.1% across all active Nifty contracts.

➤ Nifty Open Int PCR at 1.370 compared to 1.253 previous day.

➤ Nifty VIX at 28.20 from 30.25 the previous Day.

➤ Nifty put options add 24.46 Lakhs and call options pares 20.1 Lakhs in OI during the day.

➤ Incremental addition in Nifty put options seen in 5000, 5100, 4500 & 4900 Oct strike during the day.

➤ Incremental addition in Nifty call options seen in 5300 Oct & Nov Strike during the day.

➤ Highest OI in Nifty put at 4900 Oct strike and calls is at 5300 Oct strike.

➤ FII side sees short covering and long build up in Nifty futures long liquidation and short build up in stock futures and unwinding of Nifty call options seen.

➤ Long build up seen in KOTAKBANK, DENABANK, HDIL, RELINFRA, HOTELEELA, INDIANB, RELCAPITAL, LITL, ITC, SESAGOA, ROLTA, SYNDIBANK, ADLABSFILM, INDHOTEL, PNB, SBIN, LUPIN, IVRCLINFRA, WELGUJ, HCC, DISHTV, DCHL & BANKINDIA etc.

➤ Long unwinding seen n DABUR, CROMPGREAV, INDIAINFO, ISPATIND & RNRL

Nifty and Futures	Close	Change	Prem /Disc
Nifty	5054.25	109.05	
Nifty Near	5059.50	125.00	5.25
Nifty Mid	5068.95	123.30	14.70

Futures	OI	Chng	%Chng
Bank Nifty Futures	1306600	66650	5.4%
CNXIT Futures	19800	900	4.8%
Minifty	906400	301180	49.8%
NIFTY All Futures	26776300	-30800	-0.1%
Nifty Near	25373200	-154400	-0.6%
Nifty Mid	1079750	117150	12.2%
Nifty Far	323350	6450	

PCR	Vol	OI
Nifty All	1.157	1.370
Nifty Near	1.154	1.477
Nifty Mid	1.262	1.599
Market all	1.093	0.425

Open Interest in Rs Crores	All	Chng	% Chng
Market wide	98193.40	2213.26	2.31%
All Futures	46692.91	1839.89	4.10%
Nifty futures	13548.94	319.33	2.41%
Options	51500.50	373.37	0.73%
Stock Futures	31502.15	1561.60	5.22%
Nifty Long dated options	7173.37		

OI Spread	Near	Mid	Far
Market wide	78585.83	4746.50	7452.79
All Futures	45061.25	1453.42	178.24
Nifty futures	12837.57	547.32	164.05
Options	33524.59	3293.08	7274.55

FII in Derivative	Net + / - Week	OI	OI Prev	Net OI Chng	Chng in contract
INDEX FUTURES	492.76	12231.01	11271.86	959.15	26566
INDEX OPTIONS	-183.41	31263.78	31003.15	260.63	-16743
STOCK FUTURES	-35.93	25115.77	24366.50	749.28	5019
STOCK OPTIONS	27.41	577.97	544.53	33.44	1367
<b>Net</b>	<b>301</b>	<b>69189</b>	<b>67186</b>	<b>2003</b>	<b>16209</b>

Data Source NSE Provisional figures for FII Data / Seediff  
NSE scrip codes are used in the report.

## Stock options addition over the Day.

Stock calls addition							
SYMBOL	EXPIRY_DT	STRIKE_PR	OPTION_TYP	SETTLE_PR	CONTRACTS	OPEN_INT	Chng in lot
RNRL	29/10/2009	100	CA	2.1	875	4856208	352
ONGC	29/10/2009	1260	CA	31.7	342	74250	218
RELIANCE	29/10/2009	2280	CA	18.95	880	220650	186
RCOM	29/10/2009	250	CA	12.45	615	389200	121
RNRL	29/10/2009	90	CA	4.6	1431	3769104	91
RNRL	29/10/2009	95	CA	3.05	591	1720056	84
TATAMOTORS	29/10/2009	560	CA	15.5	280	221000	80
RELCAPITAL	29/10/2009	1000	CA	18.65	241	89976	67
IDEA	29/10/2009	70	CA	1.35	165	1863000	65
BHARTIARTL	29/10/2009	380	CA	5.95	577	1111500	63

Stock Puts addition							
SYMBOL	EXPIRY_DT	STRIKE_PR	OPTION_TYP	SETTLE_PR	CONTRACTS	OPEN_INT	Chng in Lot
BHARTIARTL	29/10/2009	350	PA	13.3	1758	1657000	1555
RELIANCE	29/10/2009	2160	PA	53.1	510	86850	271
RELIANCE	29/10/2009	2100	PA	31.1	1137	177750	101
HINDUNILVR	29/10/2009	280	PA	3.55	157	494000	90
SBIN	29/10/2009	2100	PA	39.75	372	61644	70
RCOM	29/10/2009	240	PA	9.5	178	128100	69
HINDALCO	29/10/2009	120	PA	1.8	103	837284	68
DLF	29/10/2009	410	PA	10.3	92	119200	65
TATAMOTORS	29/10/2009	540	PA	26.35	85	90950	57
RNRL	29/10/2009	80	PA	1.95	134	650832	44

## Nifty options addition / paring during the Day.

Nifty Options					
Max +ve Change	Expiry	Strike	OI	Chng	Last
<b>Nifty Puts</b>	29-Oct-09	5000	4434450	1514900	84.95
	29-Oct-09	5100	1723750	637050	128.30
	29-Oct-09	4500	2999150	562950	10.30
	29-Oct-09	4900	6725500	460450	55.60
<b>Nifty Calls</b>	29-Oct-09	5300	4428100	161550	24.00
	26-Nov-09	5300	398200	130800	87.00
	26-Nov-09	5200	196900	63850	125.40
26-Nov-09	5400	314350	35600	58.00	
Max -ve Change	Expiry	Strike	OI	Chng	Last
<b>Nifty Puts</b>	29-Oct-09	4700	4763850	-735050	23.35
	29-Oct-09	4600	2489550	-316300	15.00
	29-Oct-09	4200	1221850	-210600	2.70
	29-Oct-09	4300	1450650	-93750	4.30
<b>Nifty Calls</b>	29-Oct-09	5000	3379650	-1324250	144.35
	29-Oct-09	5100	4022450	-626750	89.00
	29-Oct-09	4900	2175700	-433500	214.10
	29-Oct-09	5500	1184250	-46500	5.15
Max OI Nifty	Expiry	Strike	OI	Chng	Last
<b>Put</b>	29-Oct-09	4900	6725500	460450	55.6
<b>Calls</b>	29-Oct-09	5300	4428100	161550	24.00

## DISCLAIMER

FCH-Centrum Wealth Managers Ltd. ("FCH-CWML") is a SEBI registered Stock Broking Company and is a member of National Stock Exchange of India Ltd. (NSE). It is in the process of starting its broking operations. It is also a distributor of various IPO's, Mutual funds etc. As a group Centrum has Stock broking, forex, Investment Banking, Advisory and other business relationships with a significant percentage of the companies covered by our Research Group. Our research professionals might be providing important inputs into the Group's Investment Banking and other business selection processes.

Recipients of this report should assume that our Group is seeking or may seek or will seek Investment Banking, advisory, project finance or other businesses and may receive commission, brokerage, fees or other compensation from the company or companies that are the subject of this material/report. Our Company and Group companies and their officers, directors and employees, including the analysts and others involved in the preparation or issuance of this material and their dependants, may on the date of this report or from, time to time have "long" or "short" positions in, act as principal in, and buy or sell the securities or derivatives thereof of companies mentioned herein. Our sales people, dealers, traders and other professionals may provide oral or written market commentary or trading strategies to our clients that reflect opinion that are contrary to the opinions expressed herein, and our proprietary trading and investing businesses may make investment decisions that are inconsistent with the recommendations expressed herein. We may have earlier issued or may issue in future reports on the companies covered herein with recommendations/ information inconsistent or different those made in this report. The research cell of the other group company/companies might have issued reports or given recommendations which might be contrary to the recommendations in this document. In reviewing this document, you should be aware that any or all of the foregoing, among other things, may give rise to or potential conflicts of interest. We and our Group may rely on information barriers, such as "Chinese Walls" to control the flow of information contained in one or more areas within us, or other areas, units, groups or affiliates of Centrum.

This report is for information purposes only and this document/material should not be construed as an offer to sell or the solicitation of an offer to buy, purchase or subscribe to any securities, and neither this document nor anything contained herein shall form the basis of or be relied upon in connection with any contract or commitment whatsoever. Similarly, this document does not have regard to the specific investment objectives, financial situation/circumstances and the particular needs of any specific person who may receive this document. The securities discussed in this report may not be suitable for all the investors. The securities described herein may not be eligible for sale in all jurisdictions or to all categories of investors. Persons who may receive this document should consider and independently evaluate whether it is suitable for his/ her/their particular circumstances and, if necessary, seek professional/financial advice. Any such person shall be responsible for conducting his/her/their own investigation and analysis of the information contained or referred to in this document and of evaluating the merits and risks involved in the securities forming the subject matter of this document.

The projections and forecasts described in this report were based upon a number of estimates and assumptions and are inherently subject to significant uncertainties and contingencies. Projections and forecasts are necessarily speculative in nature, and it can be expected that one or more of the estimates on which the projections and forecasts were based may not materialize or may vary significantly from actual results, and such variances will likely increase over time. All projections and forecasts described in this report have been prepared solely by the authors of this report independently of the Company. You should not regard the inclusion of the projections and forecasts described herein as a representation or warranty by or on behalf of the Company, Centrum, the authors of this report or any other person that these projections or forecasts or their underlying assumptions will be achieved. For these reasons, you should only consider the projections and forecasts described in this report after carefully evaluating all of the information in this report, including the assumptions underlying such projections and forecasts.

The price and value of the investments referred to in this document/material and the income from them may go down as well as up, and investors may incur losses on any investments. Past performance is not a guide for future performance. Future returns are not guaranteed and a loss of original capital may occur. Actual results may differ materially from those set forth in projections. Forward-looking statements are not predictions and may be subject to change without notice. Centrum and its affiliates accept no liabilities whatsoever for any loss or damage of any kind arising out of the use of this report.

This report/document has been prepared by Centrum based upon information available to the public and sources, believed to be reliable. No representation or warranty, express or implied is made that it is accurate or complete. Centrum has reviewed the report and, in so far as it includes current or historical information, it is believed to be reliable, although its accuracy and completeness cannot be guaranteed. The opinions expressed in this document/material are subject to change without notice and have no obligation to tell you when opinions or information in this report change.

This report or recommendations or information contained herein do/does not constitute or purport to constitute investment advice in publicly accessible media and should not be reproduced, transmitted or published by the recipient. The report is for the use and consumption of the recipient only. This publication may not be distributed to the public used by the public media without the express written consent of Centrum. This report or any portion hereof may not be printed, sold or distributed without the written consent of Centrum. Neither this document nor any copy of it may be taken or transmitted into the United State (to U.S. Persons), Canada, or Japan or distributed, directly or indirectly, in the United States or Canada or distributed or redistributed in Japan or to any resident thereof. The distribution of this document in other jurisdictions may be restricted by law, and persons into whose possession this document comes should inform themselves about, and observe, any such restrictions. Neither Centrum nor its directors, employees, agents or representatives shall be liable for any damages whether direct or indirect, incidental, special or consequential including lost revenue or lost profits that may arise from or in connection with the use of the information.



# FCH-CENTRUM WEALTH MANAGERS LTD.

Member (NSE)

Regn No

CAPITAL MARKET SEBI REGN. NO.: NSE: INB23329138

DERIVATIVES SEBI REGN. NO.: NSE: INF 23329138

(TRADING & SELF CLEARING MEMBER)

Distributor Mutual fund

ARN : 35420

Website: [www.centrum.co.in](http://www.centrum.co.in)

Investor Grievance Email ID: [investor.grievances@centrum.co.in](mailto:investor.grievances@centrum.co.in)

**REGD. OFFICE Address**

Bombay Mutual Bldg.,  
2nd Floor,  
Dr. D.N. Road,  
Fort,  
Mumbai - 400 001

**Correspondence Address**

Centrum House,  
4<sup>th</sup> Floor, CST Road,  
Near Vidya Nagari Marg,  
Kalina, Santacruz (E)  
Mumbai 400 098.  
Tel: (022)4215 9000  
Fax: +91 22 4215 9344

Centrum House, CST Road, Vidya Nagari Marg, Kalina, Santacruz(East) Mumbai 400098.

[www.centrum.co.in](http://www.centrum.co.in)

Tel: +91 22 67249000 Fax: +91 22 67249360