

Trace & Track Report

FOR PRIVATE CIRCULATION ONLY

25 June 2007



Hind Lever (191.60)

The daily chart of Hind Lever shows that it is consolidating after a decline from Rs.205 to Rs.185. A decisive break above Rs.192.30 could attempt Rs.198 and Rs.202-205 in an optimistic scenario. Support is at Rs.188 while breach of Rs.184 would negate the short up move.

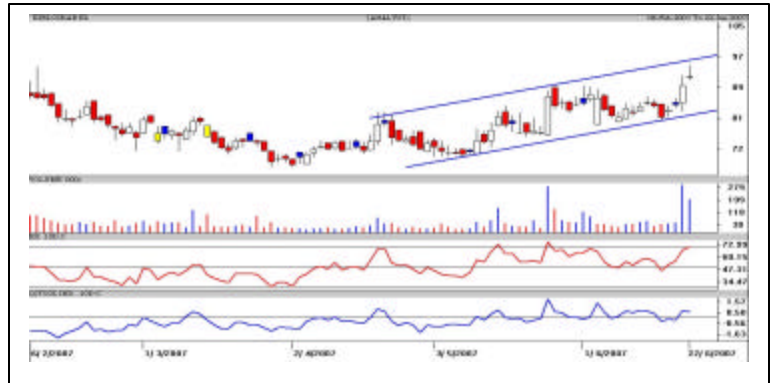
Resistance: 198, 205, 213.
Support : 188, 184, 178-179.



Kirloskar El (92.30)

The chart of Kirloskar Ele shows that it is moving in an upward sloping channel in blue. It has also closed above the resistance of Rs.90.20 on high volumes. As long as it sustains above Rs.90, it could attempt Rs.98-99. Support is at Rs.87.30 and Rs.83.40.

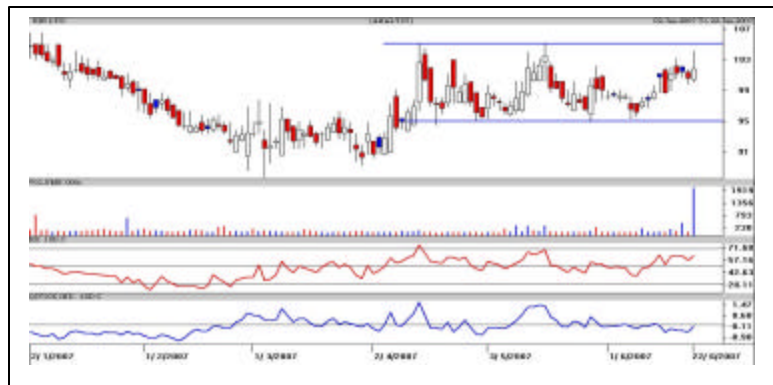
Resistance: 98.30, 104, 122.
Support : 90.20, 86.40, 79-81.



EIH Ltd (102.70)

The daily chart of EIH shows a bullish candle on extremely high volumes. It is moving in a sideways movement of Rs.95 and Rs.106. A decisive break could see it move up to Rs.114 in optimistic scenario. Support is pegged at Rs.99.50 while break below Rs.96 will show negate the bullishness.

Resistance: 106, 108.30, 112-114.
Support : 99.50, 96, 88-90.



Note: All the scrips mentioned are meant for High risk momentum players as the risk to reward is even. The life of the call is 5-6 trading days; hence one should keep booking profits and stop loss is must to quantify the risk involved.

Intra Week Range for Momentum stocks 18/06/2007 – 22/06/2007

Scrp	Close	R1	R2	S/R	S2	S1
ADLABS FILMS	574.95	601.30	614.50	566.80	519.10	553.60
ALSTOM POWER	723.50	808.40	850.90	700.20	549.50	657.70
DECCAN AVIAT	135.55	141.30	144.15	135.65	127.15	132.80
EDUCOMP SOLN	2312.60	2600.60	2744.65	2230.95	1717.25	2086.90
IDEA CELL	117.00	120.80	122.70	117.40	112.10	115.50
IVRCL INFRAS	355.30	389.50	406.60	362.60	318.60	345.50
JAIPRA	734.90	766.60	782.45	723.95	665.45	708.10
MCDOWELL C	1182.95	1259.40	1297.65	1190.75	1083.85	1152.50
ORCHID CHEM	254.30	268.90	276.25	257.15	238.05	249.80
PRAJ IND.LTD	494.10	511.15	539.70	499.65	459.60	471.10
RENUKA SUGAR	602.55	614.25	645.35	594.90	544.45	563.80
RIL NAT RES	35.05	38.15	39.75	35.30	30.85	33.70
UNITECH LTD	524.50	529.60	550.55	513.85	477.15	492.90
UTI BANK	614.90	639.40	651.65	616.75	581.85	604.50

Disclaimer Attached:

This document has been prepared by Religare Securities Limited (Technical Research Department). This is not an offer to buy or sell or the solicitation of an offer to buy or sell any security or to participate in any particular trading strategy or as an official confirmation of any transaction. The views expressed are those of analyst. The information contained herein is from publicly available data or other sources believed to be reliable or developed through analysis. No representation or warranty, express or implied, is made as to the accuracy, completeness or fairness of the information and opinions contained in this document. Religare accepts no obligation to correct or update the information or opinions in it. Religare may discontinue research coverage of a subject company or change the opinion(s) without notice. The investment discussed or views expressed may not be suitable for all investors and certain investors may not be eligible to purchase or participate in some or all of them. Religare recommends that investors independently evaluate particular investments and strategies. The user assumes the entire risk of any use made of this information. Neither Religare nor any of its affiliates, directors, employees, agents or representatives shall be liable for any damages whether direct, indirect, special or consequential including lost revenue or lost profits that may arise from or in connection with the use of the information. Religare and its affiliates, officers, directors, and employees may from time to time, effect or have effected an own account transaction in, or deal as principal or agent in or for the securities mentioned in this document. They may perform or seek to perform investment banking or other services for, or solicit investment banking or act as advisor or lender / borrower to such company (ies) or have other potential conflict or interest with respect to any recommendation and related information and opinions. The recipient should take this into account before interpreting the document. This report is not directed or intended for distribution, publication, availability or use by, any person or entity who is a citizen or resident of or located in any locality, state, country or other jurisdiction, where such distribution, publication availability or use would be contrary to law regulation or which would subject Religare and affiliates to any registration or licensing requirements within such jurisdiction, persons in whose possession this document comes, should inform themselves about and observes, any such restrictions. **Copy right in this document vests exclusively with Religare.** This information should not be reproduced or redistributed or passed on directly or indirectly in any form to any other person or published, copied, in whole or in part, for any purpose, without prior written permission from Religare. We do not guarantee the integrity of any e-mails or attached files and are not responsible for any changes made to them by any other person.