



Punter's Call

A flat close

The Nifty traded sideways through the day amid very high volatility and ended the session on a flat note. Intra-day the index faces a stiff resistance around 4030 and there could be profit booking around this level. There is an intra-day support at 4000. In the last few sessions the market has opened strong and then drifted down from the open and witnessed sideways moves. Hence be cautious at intra-day higher levels. On a break above the short-term target of 4020 the Nifty could test 4050. As long as the index stays above the 10-DMA at 3970, the short-term bias is up.

ICICI Bank could test Rs885 and it has a support at Rs858. Wipro appears weak around the Rs600 level. The stock has a support at Rs578. VSNL faces a resistance at Rs442 and on the downside there is a support at Rs425.

Market Breadth

	BSE	NSE
Advances	945	413
Declines	1,638	964
Unchanged	61	28



Short Term Trend

	Target	Trend	Reversal	Support/Resistance
Short term (Nifty)	4020	↑	Down below 3970	3985 / 4020

Icon guide

↑ Up	↓ Down	↘ Downswing matures	↗ Upswing matures
------	--------	---------------------	-------------------

Medium Term Trend

	Target	Trend	Reversal	Support/Resistance
Medium term (Nifty)	4100	↑	Down below 3900	3930 / 4050

Icon guide

↑ Up	↓ Down	↘ Downswing matures	↗ Upswing matures
------	--------	---------------------	-------------------

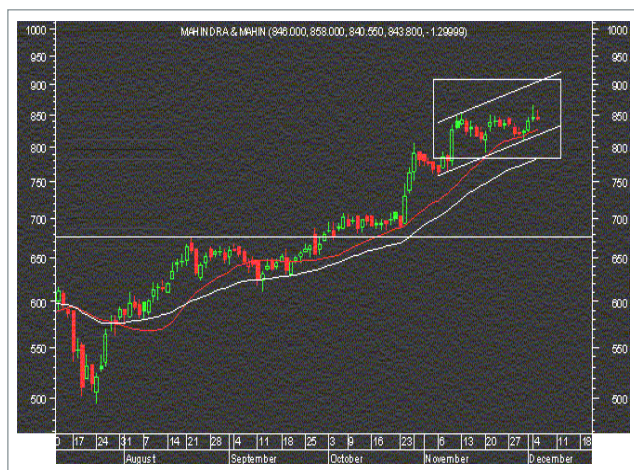
Smart Charts



Alstom Projects–Buy

CMP: Rs445

Buy Alstom Projects at the current market price of Rs445 with a stop loss of Rs398.4 for a target of Rs579.



Mahindra & Mahindra–Buy

CMP: Rs835

Buy Mahindra & Mahindra at the current market price of Rs835 with a stop loss of Rs794.4 for a target of Rs914.

Smart Charts > Open Long Calls

Date	Recommendation	Stop Loss/ Reversal (Intra-day)	Stop Loss/ Reversal (Closing)	Buy Price	Closing Price	Potential % P/L at CMP	Targets
06-12-06	Mahindra & Mahindra	-	794.4	835.0	837.9	0%	914
06-12-06	Alstom Projects	-	398.4	445.0	445.9	0%	579
06-12-06	Gateway Distriparks	-	178.8	192.8	185.4	-4%	224
29-11-06	ICICI Bank	-	824.4	870.0	870.9	0%	989
28-11-06	Reliance Industries	-	1,194.7	1,259.0	1,280.1	2%	1,419
24-11-06	TVS Motors	-	92.7	101.0	94.7	-6%	128.7
21-11-06	TCS	-	1,094.8	1,141.0	1,195.8	5%	1,249
21-11-06	Repro India	-	94.8	103.5	107.0	3%	150
15-11-06	Gwalior Chemicals	-	84.0	91.5	95.7	5%	105-110
08-11-06	Welspun Gujarat	-	64.8	77.3	88.4	14%	105-115
06-11-06	Andhra Bank	-	84.4	94.6	89.9	-5%	115-120
09-10-06	TV Today	-	69.4	77.0	73.7	-4%	90-92
09-10-06	Fedders Lloyd	-	106.7	128.0	126.0	-2%	165-170
09-10-06	Clutch Auto	-	114.4	127.5	130.4	2%	150-155
09-10-06	CEAT	-	115.4	133.0	129.4	-3%	170
18-09-06	Finolex Industries	-	84.4	99.4	90.1	-9%	129-135

Momentum Calls > Open Long Calls

For the short term—1 to 5 days

Stock	Product type	Action date	Stop loss	Closing Price	Target 1	Target 2
Voltas	Cash / Future	06-12-06	Stopped out	114.40	121.4	124.8
Bajaj Hindustan	Cash / Future	05-12-06	249.4	254.95	270	280
Mahindra & Mahindra	Cash / Future	04-12-06	Stopped out	834.40	878	900

NOTE: Kindly note that all stop losses in Momentum Calls are on an intra-day basis.

Advantage Options

Date	Name	Expiry	Reco Price	Strike Price	CMP (Rs)	Target (Rs)	Stop Loss (Rs)
29-11-06	Buy ICICI Bank Dec Call	28-Dec	28	900	22.90	115	12
28-11-06	Buy Reliance Dec Call	28-Dec	30	1290	38.00	140	12

Trendy Levels

Sensex		Nifty	
Support	Resistance	Support	Resistance
13850	14028	4000	4020
13780	14100	3982	4035
13650	14200	3940	4050
20DSMA	40DEMA	20DSMA	40DEMA
13604	13250	3920	3824
BSE Sensex: 13949		Nifty: 4016	

Day Trader's HIT List

For December 07, 2006

Scrip Name	Support Levels		Close (Rs)	Resistance Levels		Action
	S1	S2		R2	R1	
NIFTY Futures	3980	4005	4006	4014	4030	Go long above R2. Go short below S2.
ACC	1120	1138	1145	1160	1175	Buy with a stop below S2.
Century	675	685	689	698	705	Buy with a stop below S2.
Hindalco	172	175	178	182	185	Buy with a stop below S2.
Infosys	2190	2240	2245	2265	2270	Buy with a stop below S2.
M & M	830	835	838	855	865	Buy with a stop below S2.
Maruti	935	936	943	952	965	Buy with a stop below S2.
MTNL	132	135	137	142	145	Buy with a stop below S2.
ONGC	848	861	865	870	880	Go long above R2. Go short below S2.
Reliance	1260	1275	1280	1295	1310	Buy with a stop below S2.
Reliance Capital	590	598	610	615	620	Go short with a stop above R2.
Satyam	440	450	463	467	470	Go short with a stop above R2.
SBI	1321	1333	1338	1345	1370	Go long above R2. Go short below S2.
TCS	1180	1190	1196	1215	1225	Buy with a stop below S2.
Tata Steel	475	487	489	502	510	Buy with a stop below S2.
Tata Motors	865	875	881	894	900	Buy with a stop below S2.
Ranbaxy	370	387	391	398	405	Buy with a stop below S2.
VSNL	420	426	435	440	445	Go short with a stop above R2.
Titan	785	792	798	820	830	Buy with a stop below S2.
Wipro	575	580	590	595	605	Go short with a stop above R2.
Rcom	450	460	462	470	475	Buy with a stop below S2.

*Note: Closing price of Nifty futures is last traded price of Nifty futures on NSE

For Private Circulation only

[Home](#)

Disclaimer

"This document has been prepared by Sharekhan Ltd.(SHAREKHAN) This Document is subject to changes without prior notice and is intended only for the person or entity to which it is addressed to and may contain confidential and/or privileged material and is not for any type of circulation. Any review, retransmission, or any other use is prohibited. Kindly note that this document does not constitute an offer or solicitation for the purchase or sale of any financial instrument or as an official confirmation of any transaction.

Though disseminated to all the customers simultaneously, not all customers may receive this report at the same time. SHAREKHAN will not treat recipients as customers by virtue of their receiving this report.

The information contained herein is from publicly available data or other sources believed to be reliable. While we would endeavour to update the information herein on reasonable basis, SHAREKHAN, its subsidiaries and associated companies, their directors and employees ("SHAREKHAN and affiliates") are under no obligation to update or keep the information current. Also, there may be regulatory, compliance, or other reasons that may prevent SHAREKHAN and affiliates from doing so. We do not represent that information contained herein is accurate or complete and it should not be relied upon as such. This document is prepared for assistance only and is not intended to be and must not alone be taken as the basis for an investment decision. The user assumes the entire risk of any use made of this information. Each recipient of this document should make such investigations as it deems necessary to arrive at an independent evaluation of an investment in the securities of companies referred to in this document (including the merits and risks involved), and should consult its own advisors to determine the merits and risks of such an investment. The investment discussed or views expressed may not be suitable for all investors. We do not undertake to advise you as to any change of our views. Affiliates of Sharekhan may have issued other reports that are inconsistent with and reach different conclusion from the information presented in this report.

This report is not directed or intended for distribution to, or use by, any person or entity who is a citizen or resident of or located in any locality, state, country or other jurisdiction, where such distribution, publication, availability or use would be contrary to law, regulation or which would subject SHAREKHAN and affiliates to any registration or licensing requirement within such jurisdiction. The securities described herein may or may not be eligible for sale in all jurisdictions or to certain category of investors. Persons in whose possession this document may come are required to inform themselves of and to observe such restriction.

SHAREKHAN & affiliates may have used the information set forth herein before publication and may have positions in, may from time to time purchase or sell or may be materially interested in any of the securities mentioned or related securities. SHAREKHAN may from time to time solicit from, or perform investment banking, or other services for, any company mentioned herein. Without limiting any of the foregoing, in no event shall SHAREKHAN, any of its affiliates or any third party involved in, or related to, computing or compiling the information have any liability for any damages of any kind. Any comments or statements made herein are those of the analyst and do not necessarily reflect those of SHAREKHAN."