



Punter's Call

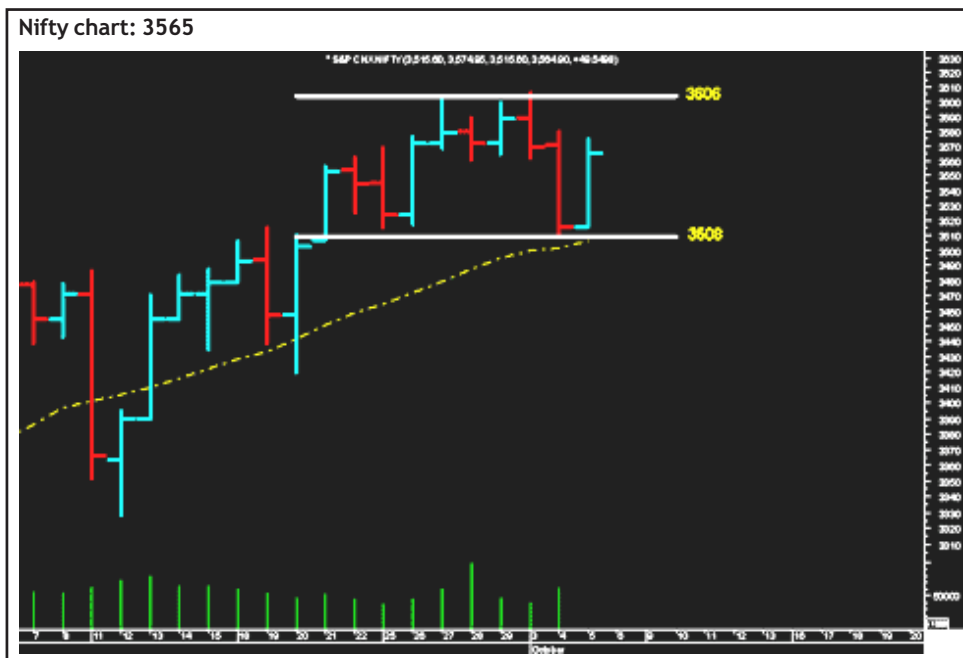
In a consolidation mode

The Nifty closed the trading session well above the 10-DMA at 3558. The index had taken support yesterday around 3500 and witnessed a bounce today that saw it trading on a firm note through the session. In the short term the Nifty will continue to trade and consolidate in the 3508-3606 trading band. Any upmove in the index is likely to take place only on a close above 3600. Intraday the index has support in the 3550-3520 range and it faces a resistance at 3600. The short-term bias is down as long as the index maintains below 3600 on a closing basis.

Sterlite Industries could test Rs455 and it has a support at Rs430. SBI is exhibiting strength above Rs1,020 and on the upside it could test Rs1,045. Tata Power faces a resistance at Rs555 and it has a support at Rs530.

Market Breadth

	BSE	NSE
Advances	1,839	1,020
Declines	663	285
Unchanged	81	32



Short Term Trend

	Target	Trend	Reversal	Support/Resistance
Short term (Nifty)	3500	↓	Up above 3600	3550 / 3600

Icon guide

↑ Up	↓ Down	↘ Downswing matures	↗ Upswing matures
------	--------	---------------------	-------------------

Medium Term Trend

	Target	Trend	Reversal	Support/Resistance
Medium term (Nifty)	3620	↑	Down below 3400	3400 / 3600

Icon guide

↑ Up	↓ Down	↘ Downswing matures	↗ Upswing matures
------	--------	---------------------	-------------------

Smart Charts



Hero Honda—Buy

CMP: Rs757

Hero Honda has taken support from the 40-DEMA. Buy the stock at the current market price of Rs757 with a stop loss of Rs694 for targets of Rs860 and Rs880.

Smart Charts > Open Long Calls

Date	Recommendation	Stop Loss/ Reversal (Intra-day)	Stop Loss/ Reversal (Closing)	Buy Price	Closing Price	Potential % P/L at CMP	Targets
05-10-06	Hero Honda		694.0	757.0	753.1	-1%	860-880
03-10-06	Mahindra & Mahindra		629.4	692.0	689.3	0%	749-809
28-09-06	Gateway Distriparks		148.4	164.0	162.6	-1%	180-195
25-09-06	Satyam		793.4	834.0	817.9	-2%	920-980
25-09-06	Bajaj Auto		Book Profit	2880.0	3,127.0	9%	3,150-3,180
19-09-06	Tricom India		197.4	215.0	213.3	-1%	250
19-09-06	Hindustan Motor		37.7	41.8	41.2	-1%	46-50
19-09-06	Exide Industries		38.7	41.8	39.0	-7%	46-50
19-09-06	Sterlite Optical		158.4	174.0	174.5	0%	200-206
18-09-06	Finolex Industries		84.4	99.4	94.1	-5%	129-135
14-09-06	Balrampur Chini		90.0	98.0	100.2	2%	115
14-09-06	SREI International		47.0	53.0	50.8	-4%	65
14-09-06	Mercator Lines		39.4	43.0	42.6	-1%	50-52
13-09-06	Bharti		449.4	436.6	459.1	5%	510-540
08-09-06	Jindal Saw		294.4	323.0	324.9	1%	379
08-09-06	LIC Housing Finance		153.0	166.0	172.5	4%	190
08-09-06	Nalco		198.0	214.0	214.0	0%	250
08-09-06	Nirma		374.4	391.2	390.7	0%	424
04-09-06	Praj Industries	159.7	--	183.5	165.1	-10%	214
18-08-06	Aptech Training		110.0	123.0	133.0	8%	155

Advantage Options

Date	Name	Expiry	Reco Price	Strike Price	CMP (Rs)	Target (Rs)	Stop Loss (Rs)
25-09-06	Buy Satyam Oct Call	26-Oct	25	860	18.50	72	12

Momentum Calls > Open Long Calls

For the short term—1 to 5 days

Stock	Product type	Action date	Stop loss	Closing Price	Target 1	Target 2
NTPC	Cash / Future	03-10-06	128.4	131	138	143
IPCL	Cash / Future	21-09-06	299.7	302	325	339

NOTE: Kindly note that all stop losses in Momentum Calls are on an intra-day basis.

Momentum Calls > Open Short Calls

For the short term—1 to 5 days

Stock	Product type	Action date	Stop loss	Closing Price	Target 1	Target 2
Nifty Future	Cash / Future	05-10-06	3595	3571	3520	-
Wipro	Cash / Future	04-10-06	528	521	490	-

NOTE: Kindly note that all stop losses in Momentum Calls are on an intra-day basis.

Trendy Levels

Sensex		Nifty	
Support	Resistance	Support	Resistance
12250	12440	3550	3580
12178	12555	3520	3600
12070	12676	3480	3620
20DSMA	40DEMA	20DSMA	40DEMA
12108	11827	3506	3435
BSE Sensex: 12389		Nifty: 3565	

Day Trader's HIT List

For October 06, 2006

Scrip Name	Support Levels		Close (Rs)	Resistance Levels		Action
	S1	S2		R2	R1	
NIFTY Futures	3520	3560	3574	3585	3610	Go long above R2. Go short below S2.
ACC	970	974	983	985	990	Go long above R2. Go short below S2.
Century	500	505	509	516	520	Buy with a stop below S2.
Hindalco	169	171	173	177	179	Buy with a stop below S2.
Infosys	1842	1855	1866	1885	1920	Buy with a stop below S2.
M & M	680	685	689	700	710	Go long above R2. Go short below S2.
Maruti	935	945	948	953	962	Go long above R2. Go short below S2.
MTNL	154	156	158	163	165	Buy with a stop below S2.
ONGC	1115	1125	1144	1150	1155	Go short with a stop above R2.
Reliance	1140	1150	1155	1165	1170	Buy with a stop below S2.
Reliance Capital	570	578	583	590	595	Buy with a stop below S2.
Satyam	805	815	818	822	830	Go long above R2. Go short below S2.
SBI	1030	1035	1039	1045	1060	Go long above R2. Go short below S2.
TCS	980	985	999	1010	1015	Go short with a stop above R2.
Tata Steel	525	534	537	540	546	Go long above R2. Go short below S2.
Tata Motors	885	890	895	910	915	Buy with a stop below S2.
Ranbaxy	410	415	424	428	430	Go short with a stop above R2.
VSNL	386	389	396	400	404	Go short with a stop above R2.
Titan	775	780	790	795	800	Go short with a stop above R2.
Wipro	505	518	521	524	535	Go long above R2. Go short below S2.
Rcom	338	345	348	350	355	Go long above R2. Go short below S2.

*Note: Closing price of Nifty futures is last traded price of Nifty futures on NSE

For Private Circulation only

[Home](#)

Disclaimer

"This document has been prepared by Sharekhan Ltd.(SHAREKHAN) This Document is subject to changes without prior notice and is intended only for the person or entity to which it is addressed to and may contain confidential and/or privileged material and is not for any type of circulation. Any review, retransmission, or any other use is prohibited. Kindly note that this document does not constitute an offer or solicitation for the purchase or sale of any financial instrument or as an official confirmation of any transaction.

Though disseminated to all the customers simultaneously, not all customers may receive this report at the same time. SHAREKHAN will not treat recipients as customers by virtue of their receiving this report.

The information contained herein is from publicly available data or other sources believed to be reliable. While we would endeavour to update the information herein on reasonable basis, SHAREKHAN, its subsidiaries and associated companies, their directors and employees ("SHAREKHAN and affiliates") are under no obligation to update or keep the information current. Also, there may be regulatory, compliance, or other reasons that may prevent SHAREKHAN and affiliates from doing so. We do not represent that information contained herein is accurate or complete and it should not be relied upon as such. This document is prepared for assistance only and is not intended to be and must not alone be taken as the basis for an investment decision. The user assumes the entire risk of any use made of this information. Each recipient of this document should make such investigations as it deems necessary to arrive at an independent evaluation of an investment in the securities of companies referred to in this document (including the merits and risks involved), and should consult its own advisors to determine the merits and risks of such an investment. The investment discussed or views expressed may not be suitable for all investors. We do not undertake to advise you as to any change of our views. Affiliates of Sharekhan may have issued other reports that are inconsistent with and reach different conclusion from the information presented in this report.

This report is not directed or intended for distribution to, or use by, any person or entity who is a citizen or resident of or located in any locality, state, country or other jurisdiction, where such distribution, publication, availability or use would be contrary to law, regulation or which would subject SHAREKHAN and affiliates to any registration or licensing requirement within such jurisdiction. The securities described herein may or may not be eligible for sale in all jurisdictions or to certain category of investors. Persons in whose possession this document may come are required to inform themselves of and to observe such restriction.

SHAREKHAN & affiliates may have used the information set forth herein before publication and may have positions in, may from time to time purchase or sell or may be materially interested in any of the securities mentioned or related securities. SHAREKHAN may from time to time solicit from, or perform investment banking, or other services for, any company mentioned herein. Without limiting any of the foregoing, in no event shall SHAREKHAN, any of its affiliates or any third party involved in, or related to, computing or compiling the information have any liability for any damages of any kind. Any comments or statements made herein are those of the analyst and do not necessarily reflect those of SHAREKHAN."