

Inside this report:

- Market Insight** 1.
 - Technical Call** 2-3.
 - Call Tracker** 4.
 - Other Indices** 5.
 - Pivot** 6.
- Support/Resistance Levels for Nifty-50

Market Insight:

The market saw initial, cheaters rally and then finally blood on the street. The market breadth was negative which a sign of weakness is and hence caution is advised to be strictly adhered too. Though the short term averages were tarnished, it would be important for us to watch the behavior of the volatility and its effect on the market as it has now started behaving very wild and the swings make it difficult for one to sustain stop losses. Though we may see a pull back in the market it would be more a short covering as the market opened higher and finally closed in the lowest prices of the day.

There was a gain in a handful of stocks like yesterday TRIVENI , NIITTECH , BALRAMPUR CHINI , BAJAJHIND , STAR , TECH MAHINDRA , SUN PHARMA , TATA CHEM , ANSAL INFRA , ASHOK LEYLAND , SATYAM COMP , HTMT GLOBAL , AURO PHARMA , TCS and MPHASIS were a few to name which were in the positive.

There was a massive across the board selling on the bourses. This led to the F & O finish. in the negative and stocks like TATA POWER , HAVELLS , INDIAN INFO , JP ASSOCIATES, NAGAR FERT , STERLITE OPTICAL , APIL , ACC , REL , BATAINDIA, RELCAPITAL , IDBI , PATELENG , SBIN and YES BANK lost ground.

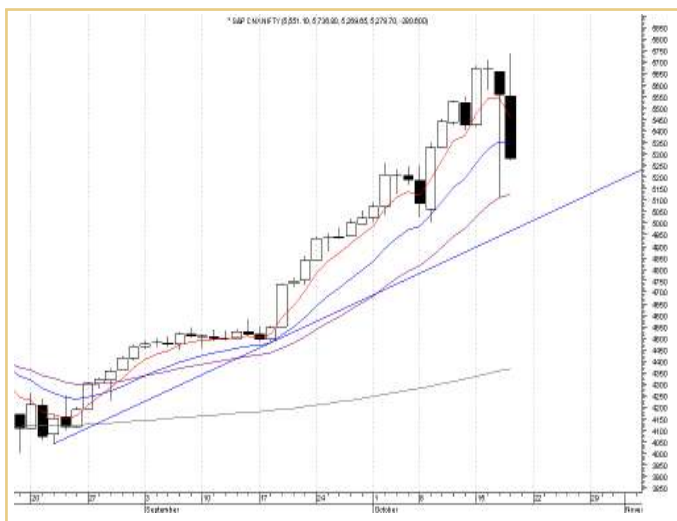
The Nifty has an immediate support at the 5170 level followed by 5,050. The resistance levels for the same are at 5,630 followed by 5,900.

The BSE Sensex has a support at the 17,450 level followed by 16,900. The resistance levels for the same are at 18,875 followed by 19,750.

Statistic:

| | SENSEX | NIFTY |
|--------------|----------|---------|
| CLOSE | 17998.39 | 5351.00 |
| PIVOT | 18322.74 | 5452.48 |
| S1 | 17446.81 | 5168.17 |
| S2 | 16895.24 | 4985.33 |
| R1 | 18874.31 | 5635.32 |
| R2 | 19750.24 | 5919.63 |

CNX - NIFTY



SENSEX



Warning:

- Short-term trading on the basis of technical is a high risk and skill oriented venture and may result in huge losses also. Traders doing so are doing at their own risk. We are not responsible for any damages.
- Mostly it is not advisable to buy/sell a stock if it touches the target price first and then comes within recommended range of buy/sell.
- Never wait for actual target to be reached book profits slightly before target price, if prices show sluggishness. Always follow stop losses to avoid larger losses.

TRADING LAWS

- A Trader not observing STOP LOSS, cannot survive for long .
- Never re-schedule your stop loss ,square up first and then take a fresh view.
- Book small losses by buying / selling near support / resistance, and look for big Gains,this will maximize the gains.
- Don't try to anticipate the change in main trend ,so don't go against trend .

Punter's Zone (High Risk Intraday calls for day traders)

| Scrip | Price | Recommendation | Stop Loss | Target |
|---------|------------|-----------------------------------|------------|------------|
| CAIRNS. | Rs.191.00. | Buy between Rs.188 and Rs.191. | Rs.186. | Rs.201. |
| IDEA. | Rs.150.00. | Buy between Rs.145 and Rs.147.50. | Rs.142.50. | Rs.157.50. |
| HDIL. | Rs.645.00. | Sell between Rs.660 and Rs.670. | Rs.680. | Rs.620. |
| MARUTI. | Rs.1145. | Sell between Rs.1150 and Rs.1175. | Rs.1180. | Rs.1090. |

(Note : These calls will expire in a single day and will not be tracked).

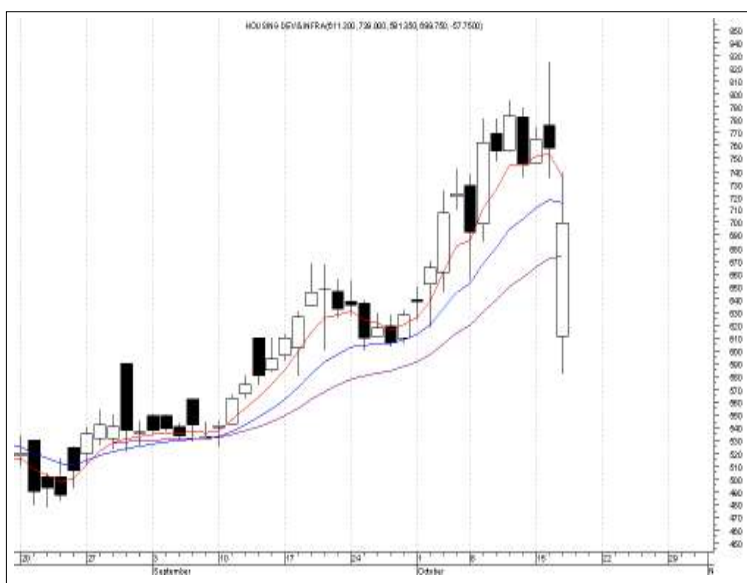
CAIRNS.



IDEA.



HDIL.



MARUTI.



Note:

- Short-term trading on the basis of technical is a high risk and skill oriented venture and may result in huge losses also. Traders doing so are doing at their own risk. We are not responsible for any damages.
- Mostly it is not advisable to buy/sell a stock if it touches the target price first and then comes within recommended range of buy/sell.
- Never wait for actual target to be reached book profits slightly before target price.

Technical Calls

| Scrip | Price | Recommendation | Stop Loss | Target |
|--------------|-------------|-----------------------------------|-----------|----------|
| LITL. | Rs.394.75. | Sell between Rs.400 and Rs.410. | Rs.420. | Rs.360. |
| BIRLA JUTE. | Rs.327.00. | Sell between Rs.330 and Rs.340. | Rs.350. | Rs.300. |
| ABB. | Rs.1530.00. | Sell between Rs.1550 and Rs.1575. | Rs.1600. | Rs.1450. |
| JET AIRWAYS. | Rs.870.00. | Sell between Rs.880 and Rs.890. | Rs.900. | Rs.840. |

LITL.



BIRLA JUTE.



ABB.



JET AIRWAYS.



Note:

- Short-term trading on the basis of technical is a high risk and skill oriented venture and may result in huge losses also. Traders doing so are doing at their own risk. We are not responsible for any damages.
- Mostly it is not advisable to buy/sell a stock if it touches the target price first and then comes within recommended range of buy/sell.
- Never wait for actual target to be reached book profits slightly before target price.

Call Tracker:

| Scrip | Original Call Details | Fresh Call |
|------------------|--|----------------------|
| ALSTOM PROJECTS. | Sell between Rs.975 and Rs.980.SL – Rs.990 , TGT –Rs.945. | STOP LOSS TRIGGERED. |
| ADLABS FILM. | Sell between Rs.720 and Rs.730, SL –Rs.740 , TGT –Rs.680. | STOP LOSS TRIGGERED. |
| CESC. | Buy between Rs.560 and Rs.570.SL –Rs.555 , TGT –Rs.600. | STOP LOSS TRIGGERED. |
| ABIRLANUVO. | Buy between Rs.1700 and Rs.1715. SL –Rs.1695 , TGT –Rs.1765. | STOP LOSS TRIGGERED. |
| PFC | Buy between Rs.200 and Rs.210. SL –Rs.195 , TGT – Rs.240. | STOP LOSS TRIGGERED. |

BSE MIDCAP DATA

| | |
|--------|---------|
| Open | 7643.73 |
| High | 7849.11 |
| Low | 7339.64 |
| Close | 7426.24 |
| Change | -174.70 |
| Pivot | 7538.33 |
| S1 | 7227.55 |
| S2 | 7028.86 |
| R1 | 7737.02 |
| R2 | 8047.80 |

BSE SMALLCAP DATA

| | |
|--------|---------|
| Open | 9245.74 |
| High | 9457.48 |
| Low | 8987.40 |
| Close | 9078.75 |
| Change | -122.83 |
| Pivot | 9174.54 |
| S1 | 8891.61 |
| S2 | 8704.46 |
| R1 | 9361.69 |
| R2 | 9644.62 |

CNX IT

| | |
|--------|---------|
| Open | 4939.10 |
| High | 5037.50 |
| Low | 4846.70 |
| Close | 4904.30 |
| Change | 21.40 |
| Pivot | 4929.50 |
| S1 | 4821.50 |
| S2 | 4738.70 |
| R1 | 5012.30 |
| R2 | 5120.30 |

BSE MIDCAP INDEX



BSE SMALL CAP INDEX



CNX IT INDEX



- BSE Small cap Index has exhibited a Bearish Candlestick. One may use the level of 8,990 as the stop loss level for long positions.
- BSE Midcap Index has exhibited a Bearish Candlestick. One may use the level of 7,340 as the stop loss level for long positions.
- CNX IT Index has exhibited a Bullish Candlestick. One may use the level of 4,840 the stop loss level for long positions for the time being..

Warning:

- Short-term trading on the basis of technical is a high risk and skill oriented venture and may result in huge losses also. Traders doing so are doing at their own risk. We are not responsible for any damages.
- Mostly it is not advisable to buy/sell a stock if it touches the target price first and then comes within recommended range of buy/sell.
- Never wait for actual target to be reached book profits slightly before target price, if prices show sluggishness. Always follow stop losses to avoid larger losses.

Support Resistance – Nifty 50

| Name | Close | R2 | R1 | Pivot Point | S1 | S2 |
|------------|---------|---------|---------|-------------|---------|---------|
| ABB | 1487.15 | 1684.38 | 1585.77 | 1525.38 | 1426.77 | 1366.38 |
| ACC | 1203 | 1393.00 | 1298.00 | 1149.00 | 1054.00 | 905.00 |
| AMBUJACEM | 148.05 | 153.42 | 150.73 | 147.42 | 144.73 | 141.42 |
| BAJAJAUTO | 2485.3 | 2592.43 | 2538.87 | 2491.43 | 2437.87 | 2390.43 |
| BHARTIARTL | 1105.55 | 1182.52 | 1144.03 | 1071.52 | 1033.03 | 960.52 |
| BHEL | 2281.95 | 2491.98 | 2386.97 | 2268.98 | 2163.97 | 2045.98 |
| BPCL | 354.7 | 370.77 | 362.73 | 353.87 | 345.83 | 336.97 |
| CIPLA | 180.15 | 190.05 | 185.10 | 182.55 | 177.60 | 175.05 |
| DRREDDY | 608.25 | 636.88 | 622.57 | 615.78 | 601.47 | 594.68 |
| GAIL | 417.15 | 459.65 | 438.40 | 416.75 | 395.50 | 373.85 |
| GLAXO | 1069.1 | 1097.70 | 1083.40 | 1075.70 | 1061.40 | 1053.70 |
| GRASIM | 3704.55 | 4026.85 | 3865.70 | 3702.85 | 3541.70 | 3378.85 |
| HCLTECH | 308.3 | 326.43 | 317.37 | 307.93 | 298.87 | 289.43 |
| HDFC | 2486.4 | 2674.13 | 2580.27 | 2491.13 | 2397.27 | 2308.13 |
| HDFCBANK | 1462.75 | 1531.52 | 1497.13 | 1428.62 | 1394.23 | 1325.72 |
| HEROHONDA | 738.1 | 781.27 | 759.68 | 740.37 | 718.78 | 699.47 |
| HINDALCO | 197.65 | 236.55 | 217.10 | 188.55 | 169.10 | 140.55 |
| HINDPETRO | 236.25 | 253.38 | 244.82 | 236.43 | 227.87 | 219.48 |
| HINDUNILVR | 209.4 | 217.40 | 213.40 | 210.20 | 206.20 | 203.00 |
| ICICIBANK | 1117.1 | 1230.37 | 1173.73 | 1093.37 | 1036.73 | 956.37 |
| INFOSYSTCH | 1890.3 | 1992.23 | 1941.27 | 1899.03 | 1848.07 | 1805.83 |
| ITC | 184.5 | 194.33 | 189.42 | 184.83 | 179.92 | 175.33 |
| LT | 3295 | 3668.07 | 3481.53 | 3261.27 | 3074.73 | 2854.47 |
| M&M | 784.85 | 851.62 | 818.23 | 786.62 | 753.23 | 721.62 |
| MARUTI | 1174 | 1254.67 | 1214.33 | 1169.67 | 1129.33 | 1084.67 |
| MTNL | 164.95 | 196.58 | 180.77 | 170.38 | 154.57 | 144.18 |
| NATIONALUM | 300.7 | 325.57 | 313.13 | 297.57 | 285.13 | 269.57 |
| NTPC | 220.45 | 246.02 | 233.23 | 218.12 | 205.33 | 190.22 |
| ONGC | 1129.5 | 1274.50 | 1202.00 | 1127.50 | 1055.00 | 980.50 |
| PNB | 517.25 | 556.15 | 536.70 | 508.35 | 488.90 | 460.55 |
| RANBAXY | 420.15 | 478.92 | 449.53 | 430.42 | 401.03 | 381.92 |
| RCOM | 738.15 | 849.85 | 794.00 | 741.85 | 686.00 | 633.85 |
| REL | 1766.55 | 2020.05 | 1893.30 | 1717.15 | 1590.40 | 1414.25 |
| RELIANCE | 2687.55 | 3197.18 | 2942.37 | 2734.18 | 2479.37 | 2271.18 |
| RPL | 181.1 | 202.43 | 191.77 | 182.18 | 171.52 | 161.93 |
| SAIL | 247.45 | 282.08 | 264.77 | 242.93 | 225.62 | 203.78 |
| SATYAMCOMP | 456.5 | 476.63 | 466.57 | 460.83 | 450.77 | 445.03 |
| SBIN | 1828.75 | 2052.92 | 1940.83 | 1777.92 | 1665.83 | 1502.92 |
| SIEMENS | 1747.85 | 2056.68 | 1902.27 | 1748.58 | 1594.17 | 1440.48 |
| STER | 904.25 | 984.75 | 944.50 | 911.75 | 871.50 | 838.75 |
| SUNPHARMA | 962.2 | 1033.40 | 997.80 | 974.40 | 938.80 | 915.40 |
| SUZLON | 1785.35 | 1954.78 | 1870.07 | 1740.28 | 1655.57 | 1525.78 |
| TATAMOTORS | 806.95 | 861.25 | 834.10 | 794.55 | 767.40 | 727.85 |
| TATAPOWER | 1175.7 | 1390.90 | 1283.30 | 1137.15 | 1029.55 | 883.40 |
| TATASTEEL | 866.1 | 956.03 | 911.07 | 861.03 | 816.07 | 766.03 |
| TCS | 1094.7 | 1179.90 | 1137.30 | 1107.30 | 1064.70 | 1034.70 |
| UNITECH | 341.1 | 371.77 | 356.43 | 340.72 | 325.38 | 309.67 |
| VSNL | 503.65 | 594.68 | 549.17 | 510.83 | 465.32 | 426.98 |
| WIPRO | 488.3 | 519.43 | 503.87 | 491.43 | 475.87 | 463.43 |
| ZEEL | 334.05 | 379.98 | 357.02 | 327.03 | 304.07 | 274.08 |

Pivot Point: An Intra-Day Trading tool.

PP: Pivot Point: This is trigger point for Intra Day buy/sell based on the price range of the previous day. R1: Resistance one: 1st Resistance over PP. R2: Resistance two: 2nd Resistance over R1. S1: Support one: 1st support after PP. S2: Support Two: 2nd support after S1.

As per the tool, the trader should take BUY position just above PP and keep the stop loss of PP and the first target would be R1. If R1 is crossed then R2 becomes the next target with the stop loss at R1. Similarly if price goes below PP, the trader should SELL and keep the PP as Stop loss and the first target would be S1. If S1 is crossed then S2 becomes the next target with the stop loss at S1. This is an intra-day tool. The key to use of this tool is the -use of suggested STOP LOSS.

DISCLAIMER: This report has been issued by Anand Rathi Securities Limited (ARSL), which is regulated by SEBI. The information herein was obtained from various sources; we do not guarantee its accuracy or completeness. Neither the information nor any opinion expressed constitutes an offer, or an invitation to make an offer, to buy or sell any securities, options, future or other derivatives related to such securities ("related investment"). ARS and its affiliated may trade for their own accounts as market maker/ jobber and /or arbitrageur in any securities of this issuer(s) or in related investments, and may be on the opposite side of public orders. ARS, its affiliates, directors, officers, and employees may have a long or short position in any securities of this issuer(s) or in related investment banking or other business from, any entity mentioned in this report. This research report is prepared for private circulation. It does not have regard to the specific investment objectives, financial situation and the particular needs of any specific person who may receive this report. Investors should seek financial situation and the particular needs of any specific investing in any securities or investment strategies discussed or recommended in this report and should understand that statements regarding future prospects may not be realized. Investors should note that income from such securities, if any, may fluctuate and that each security's price or value may rise or fall. Past performance is not necessarily a guide to future performance. Foreign currency rates of exchange may adversely affect the value, price or income of any security or related investment mentioned in this report.