

THE INDICATOR

Indices	Close	Change (Pts)
SENSEX	14903.03	-235.37
NIFTY	4339.50	-62.05
DJIA	13468.78	286.87
NASDAQ	2547.33	36.08

Currency	Close	Change (%)
1 USD	40.45	-0.22
1 EURO	55.94	-1.14

Commodity	Close \$
Gold	681.80
Silver	13.04
Crude	71.64

	Institutional Equity		Investment (Rs Cr)
	02/08/07	03/08/07	Aug Total
FII's	-419.00	192.80	-1208.90
MFs	-7.30	256.80	102.00

US Listings	Close (\$)	Change (%)
NYSE		
Dr Reddy	15.29	0.26
HDFC Bank	85.22	4.30
ICICI Bank	43.53	0.90
MTNL	6.89	5.19
Patni	20.82	-1.47
Satyam	26.15	0.19
Tata Motors	16.50	2.10
VSNL	20.88	0.92
WIPRO	13.82	-0.93
NASDAQ		
Infosys	48.24	0.58

VIEW POINT: MORNING BOUNCE ON TAP

For a change, the markets are likely to open higher, courtesy the US markets, which posted their best one-day gain since 2003. Although there is no overnight improvement in the credit market perception, it was some bottom fishing ahead of the FOMC meet. Crude, that nearly plunged 5% to \$ 72.06 a barrel, also helped the market climb the wall of worry. Nikkei's is unusually volatile today and may dictate the sentiment post closing.

Wipro's ADR was not responsive to its Infocrossing acquisition, though other ADRs have done well. Directive to cut the SEZ size is not something that will buoy the Reliance counter, but the appointment of External Affairs Minister, Mr Pranab Mukherjee as the head of empowered group of ministers, who will look at the knotty issue of K G Basin Gas pricing, could surely help. The markets will do well this morning, but not to the extent of the Dow closing would make you believe.

**TRADING PICKS:
Buy Recommendations for today:**

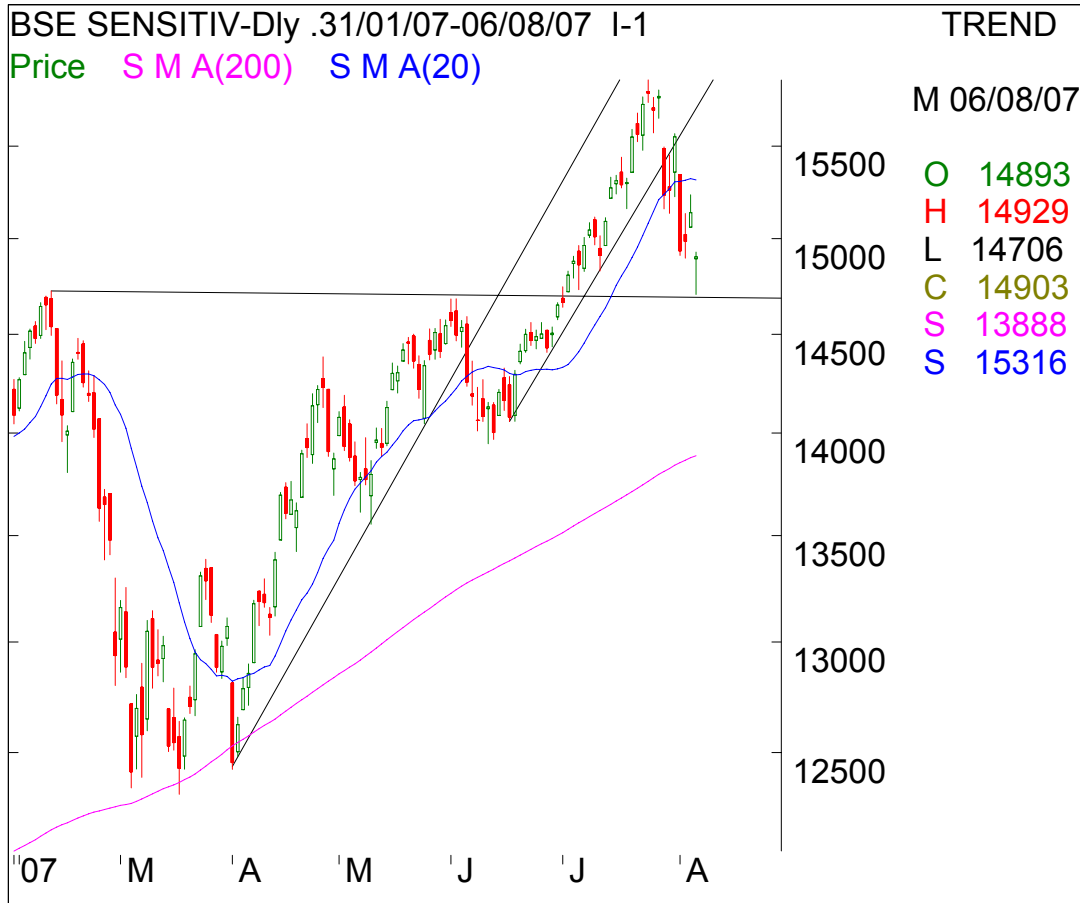
BSE Code	Scrip	BSE Quotes	Enter Around	Stop-Loss
530343	GENUS POWER	425.05		418.00
500112	SBI	1681.85		1667.00
500106	1FCI	63.75		62.00

Anagram StockBroking Ltd: C-10, Laxmi Towers, Bandra Kurla Complex, Bandra (E), Mumbai 400 051

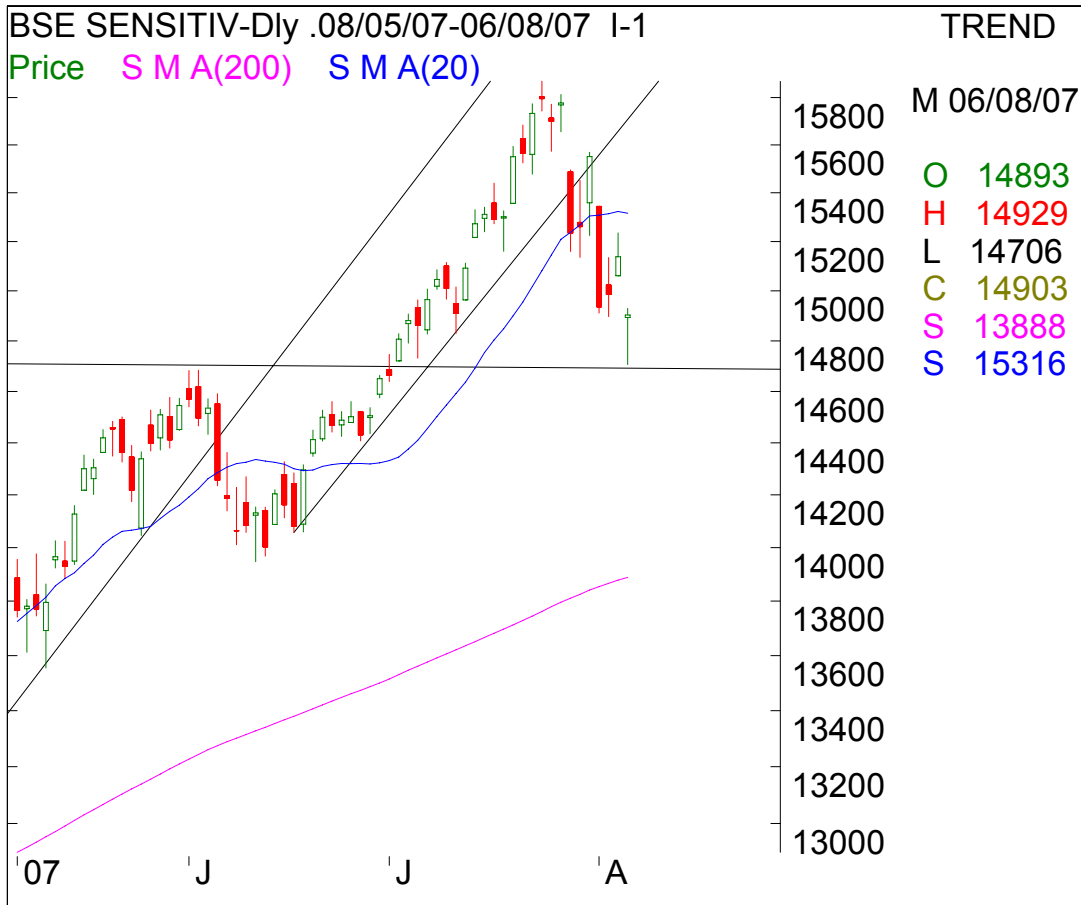
Regd. Office: Anagram House, Nr Commerce Roads Circle, Navrangpura, Ahmedabad - 380 009.

A Member of Lalbhai Group.

Anagram Research is also available on Bloomberg < Code ANGM > and ISI Emerging Markets.

THE INDICATOR
At the Street


- Sensex has taken support on the trend line joining the earlier high of 14723 and 4th June high of 14683
- The Sensex fell 433 points but recovered to close at 14903, a rise of 198 points from the bottom
- The rise from the low is just 45% of the days fall, which is not up to the mark
- The formation of a long legged structure, though not exactly a Doji, however, indicates that 14705 may prove to be a formidable support.
- Going forward, the resistance comes from the Gap between 15061 and 14928.

THE INDICATOR


THE INDICATOR**After Markets hours**

Bharti Group and Wal-Mart Stores signed an agreement to form a joint venture for their wholesale cash-and-carry business in India.

The Madras High Court on Monday dismissed a petition filed by **Novartis AG**, challenging the constitutional validity of the section 3 (d) of the Patents (Amendment) Act 2005, under which its patent application for beta crystalline form of imatinib mesylate, was rejected.

Wipro acquired US-based and Nasdaq-listed Infocrossing for approximately US \$600 million (around Rs 2,430 crore) in an all-cash deal.

During Market Hours

GMR Infrastructure has signed a memorandum of understanding (MoU) with the Tamil Nadu Industrial Development Corporation (TIDCO) for the development of a multi-product special economic zone (SEZ) in Krishnagiri district.

HDIL signs JV (66% in JV) to develop 1.2 m sqft area in Pune.

KEC Intl board has approved merger of RPG Trans with itself. RPG Trans shareholders to get 4 shares of KEC Intl for every 9 held.

Punj Lloyd has Bagged Rs 590 crore contracts for building a sulphur block at Bina Refinery of Bharat Oman Refineries at Bina, Madhya Pradesh.

The Madras High Court dismissed a petition filed by Swiss pharmaceutical Novartis AG, challenging the constitutional validity of the section 3 (d) of the Patents (Amendment) Act 2005, under which its patent application for beta crystalline form of imatinib mesylate, was rejected.

Unity Infraprojects secures contract Worth Rs 28.33 Cr from Municipal Corporation of Greater Mumbai.

THE INDICATOR**Today's Board meeting**

Date	Company Name	Purpose
07/08/07	Dynamic Technologies Ltd.	Audited Results & Dividend
07/08/07	Greaves Cotton Ltd.	Audited Results & Final Dividend
07/08/07	Jai Mata Glass Ltd.	Quarterly Results
07/08/07	Morgan Ventures Ltd	Quarterly Results
07/08/07	Rishabh Digha Steel & Allied Products Ltd.	Audited Results

Forthcoming Quarterly Results

Date	Company Name
13-Aug	Astra Microwave
	HCL Technologies
	Sobha Developers
29-Aug	Visaka Inds.

THE INDICATOR**TRADE TO TRADE SCRIPS**

The under mentioned scrips will be included in "T" Group and they would be traded and settled on Trade to Trade basis effective from August 10, 2007 and would attract a circuit filter of 5% or lower as applicable.

Sr.No.	ScripCode	Scrip Name
1	531518	Adarsh Derivatives Ltd.
2	513513	Aditya Ispat Ltd.
3	530889	Alka India Ltd.
4	532161	Baffin Engineering Projects Ltd.
5	517246	BCC Fuba India Ltd.,
6	500058	Bihar Sponge Iron Ltd
7	531671	Bisleri Gujarat Ltd.
8	501150	Centrum Capital Limited
9	511668	Fact Enterprise Limited
10	500655	Garware Polyesters Ltd
11	532378	Goldmines Media Ltd.
12	526779	Hinafil India Ltd.
13	531155	Hulta Pharmaceutical Export Ltd.
14	530519	Interface Financial Services Ltd.
15	523230	Jalpac India Ltd.,
16	512129	Jayant Mercantile Co. Ltd
17	531960	Jindal Online.com Ltd.
18	507435	Khoday India Ltd.,
19	531413	Kiran Print-Pack Ltd.
20	526045	Luminaire Technologies Ltd.
21	531515	Mahan Industries Ltd.
22	530257	Midas Pharmasec Ltd.
23	511660	Premium Capital Market & Investment
24	500361	Ras Propack Lamipack Ltd
25	531646	RFL International Ltd.
26	531240	Shamrock Industrial Co. Ltd.
27	531444	Stresscrete India Ltd.
28	531945	Sunitee Chemicals Ltd.
29	530735	Super Bakers (India) Ltd.
30	526133	Supertex Industries Ltd
31	524719	Tanu Health Care Ltd
32	531668	Vision Corporation Ltd.

THE INDICATOR
Forthcoming Corporate Actions

Scrip Code	Company Name	Ex-Date	Purpose	Div (Rs.)
506315	Borax Morarji	07/08/2007	Dividend	2.20
500870	Castrol India	07/08/2007	Dividend	4.50
500141	Ferro Alloys Cor	07/08/2007	Dividend	0.15
502219	Borosil Glass	08/08/2007	Dividend	3.00
500087	Cipla	08/08/2007	Dividend	2.00
523367	DCM Shriram Cons	08/08/2007	Dividend	0.40
504008	EMCO	08/08/2007	Dividend	5.00
532630	Gokaldas Exports	08/08/2007	Dividend	2.00
502335	Jolly Board	08/08/2007	Dividend	5.00
524109	Kabra Extrusion	08/08/2007	Dividend	4.50
511766	Muthoot Cap.Serv	08/08/2007	Dividend	1.20
524774	NGL Fine Chem	08/08/2007	Dividend	0.50
523648	Plastiblends (I)	08/08/2007	Dividend	6.50
500113	S A I L	08/08/2007	Dividend	1.50
521180	Super Spinning	08/08/2007	Dividend	0.50
531102	Surana Corp.	08/08/2007	Dividend	1.00
513005	VBC Ferro Alloys	08/08/2007	Dividend	2.00
505537	Zee Entertainmen	08/08/2007	Dividend	1.50
532749	Allcargo Global	09/08/2007	Interim Dividend	2.00
508869	Apollo Hospitals	09/08/2007	Dividend	2.00
532853	Asahi Songwon	09/08/2007	Dividend	1.00
505010	Automotive Axles	09/08/2007	Interim Dividend	6.00
511628	Brescon Corp Adv	09/08/2007	Dividend	2.50
500730	N O C I L	09/08/2007	Dividend	1.50
523385	Nilkamal Ltd	09/08/2007	Dividend	3.00
506655	Sudarshan Chem.	09/08/2007	Dividend	2.50

THE INDICATOR
Bulk deals on BSE

Date	Scrip Name	Name of Client	Buy/Sell	Quantity	Price	% Equity
6-Aug	AXON INFOTECH	INDO GREEN PROJECTS LTD	BUY	3500	559.00	0.53
6-Aug	AXON INFOTECH	LOTUS INVESTMENTS	SELL	4000	559.00	0.61
6-Aug	AXON INFOTECH	HIMADRI DYES AND INTRMDTES LTD	BUY	4000	569.39	0.61
6-Aug	CHOKSI IMAGING	OMAN NATIONAL INVESTMENT CORP	SELL	62733	21.34	1.61
6-Aug	CHOKSI IMAGING	CAMEL FOOD P LTD	BUY	20000	21.45	0.51
6-Aug	COMPACT DISC	JMP SECURITIES PVT. LTD.	SELL	58384	52.14	0.61
6-Aug	GRABAL ALOK IMPX	SONATA INVESTMENTS LTD	BUY	281000	121.47	1.36
6-Aug	KANOI PAPER	BAFNA EARTHMOVERS LTD	BUY	75795	28.24	1.24
6-Aug	KARUTURI NET.	BSMA LTD	SELL	379250	194.21	1.43
6-Aug	PAREKH ALUMINEX	FLAIR EPORTS P LTD	SELL	27900	230.82	0.40
6-Aug	PHOENIX MILLS	DEUTSCHE SECURITIES MAURI	SELL	250000	2000.00	1.76
6-Aug	PHOENIX MILLS	T ROWE PRICE INTERNATIONAL	BUY	300000	2000.00	2.11
6-Aug	SOLECTRON CENTUM	UBS SEC ASIA LTD SWISS FIN MAURI	SELL	77400	270.08	0.52
6-Aug	SOM DISTILLERIES	BASMATI SECURITIES PVT LTD	SELL	216522	15.17	1.20
6-Aug	SUJANA METAL PRD	CITIGROUP GLOBAL MARKETS MAURI	SELL	373012	29.01	0.72
6-Aug	TELEPHOTO ENT.	INDIA DIVERSIFIED MAU LTD	BUY	35617	30.39	0.58

Bulk deals on NSE

Date	Scrip Name	Name of Client	Buy/Sell	Quantity	Price	% Equity
6-Aug	ALPHA LABS	DEUTSCHE SEC MAURITIUS LIMITED	SELL	595000	56.71	2.76
6-Aug	CENTURY TEXTILES	DEUTSCHE SEC MAURITIUS LIMITED	SELL	535000	705.75	0.58
6-Aug	LUMAX INDS.	QUADRA SEC & FIN SERVICES (P) LTD	SELL	46939	474.57	0.56
6-Aug	SSI	CITIGROUP GLOBAL MKTS MAURITIUS	SELL	345608	196.52	0.60
6-Aug	PHOENIX MILLS	T ROWE PRICE INTERNATIONAL INC	BUY	102700	1999.94	0.72

THE INDICATOR
Derivative Summary

Nifty lost 62 points or 1.41 % and closed at 4339.50. Nifty Future closed at a 4308.00, a discount of 32 points.

Open interest increased by Rs 1,952 Cr or 2.4% at Rs 82,102 Cr. Open interest in number of shares went up by 3% from 167.86 Cr to 173.49 Cr shares. Open interest in futures, calls and puts changed by 2%, 6% and 2% respectively in value terms and 2.5%, 10% and 9% respectively in number of shares

IV of Nifty 4,350 Call & 4,300 Put was 22.6% & 33.6% respectively. Previous day IVS were 18.7 & 30.5% respectively for options.

OI in Nifty futures calls & puts changed by 6%, 6% and 3% respectively. Nifty **4,300** Call added 13,494 contracts in OI. Nifty **4,200** Put added 5962 contracts in OI.

Put /Call Ratio (OI)

	06/08/07	03/0807
Overall	0.30	0.31
Nifty	1.36	1.41

Put /Call Ratio (Volume)

	06/08/07	03/0807
Overall	0.69	1.06
Nifty	0.81	1.36

Turnover Details

Particular	06/08/07	03/0807
Index Futures	12892.02	10526.30
Stock Futures	18714.87	18514.52
Index Options	4581.50	3819.82
Stock Options	1376.60	1074.58
Total	37564.99	33935.22

Security in ban period for Aug 07, 2007

The derivative contracts in the underlying **JP HYDRO** have crossed 95% of the market-wide position limit and are currently in the ban period.

THE INDICATOR
Forthcoming Corporate Action

Company Name	Ex-Date	Purpose	Div (Rs.)
Aban Offshore	08/08/2007	Dividend	3.00
Cipla	08/08/2007	Dividend	2.00
SAIL	08/08/2007	Dividend	1.50
ZEEL	08/08/2007	Dividend	1.50
TVS Motor	10/08/2007	Dividend	0.15
GNFC	14/08/2007	Dividend	4.25
Larsen	14/08/2007	Dividend	20.00
AIA Eng	16/08/2007	Dividend	2.00
GAIL	16/08/2007	Dividend	2.00
HPCL	17/08/2007	Dividend	12.00
Bongaigaon	21/08/2007	Dividend	3.50
EKC	21/08/2007	Stock Split(2:10)	
Maruti	22/08/2007	Dividend	4.50
Jaiprakash asso	23/08/2007	Dividend	1.60

FII Activity on 06 - AUG

	Buy		Sell		NET(Rs)	Open Interest	
	Contracts	Value(Rs Cr)	Contracts	Value(Rs Cr)		Contracts	Values (Cr.)
Index Futures	91784	1965.85	141196	3015.25	-1049.40	908576	19606.58
Index Options	26598	565.87	9793	212.78	353.10	561661	12186.64
Stock Futures	14557	404.46	32735	959.22	-554.76	935607	27352.48
Stock Options	8	0.21	618	22.16	-21.94	7226	192.79
					-1273.01		

FII OI

Date	Index Future	Index Option	Stock Future	Stock Option
06-Aug	908576	561661	935607	7226
03-Aug	843454	539574	924839	6638

Cumulative FII positions as a percentage of total gross market position in the derivative segment, as on Aug 03, 2007 is 36.19%.

THE INDICATOR
SECTOR WATCH:

	% Cg in futures OI	% Cg in Price		% Cg in futures OI	% Cg in Price
Banking/Finance			METAL		
BANKINDIA	7	-1.61	JINDALSTEL	8	-2.99
FEDERALBNK	11	-1.25	JSWSTEEL	13	-5.09
ICICIBANK	5	-3.12			
IDFC	11	-3.07	OIL&GAS		
IFCI	17	5.02	IOC	9	-0.07
IOB	-16	-2.99			
KOTAKBANK	7	0.11	Pharma		
			UNIPHOS	5	0.89
CEMENT					
ACC	9	-2.47	POWER		
INDIACEM	6	3.62	JPHYDRO	6	0.13
			NEYVELILIG	10	-2.96
CONS/INFRA					
GMRINFRA	6	-0.42	SUGAR		
HCC	12	-1.92	TRIVENI	5	-3.61
IVRCLINFRA	-6	-3.36			
LITL	14	-2.66	TECH		
NAGARCONST	-6	1.91	HCLTECH	9	-0.25
UNITECH	6	-3.16	PATNI	7	-5.10
			ROLTA	18	-4.58
ENGINEERING					
CROMPGREAV	5	0.12	TELECOM		
CUMMINSIND	19	-3.44	IDEA	5	-1.83
LT	7	-2.85	RCOM	8	-2.98
VOLTAS	8	-2.16			
			TEXTILE		
Fertilizer			CENTURYTEX	11	-1.65
NAGARFERT	-5	3.90			
			OTHERS		
FMCG			AIRDECCAN	15	0.18
MCDOWELL-N	12	0.37	BEL	-5	1.25
			EDUCOMP	-5	-3.16
			INDHOTEL	5	-0.99
			SCI	5	-2.39

THE INDICATOR
Top Gainers & Losers Open Interest Wise
Top Gainers

Company	Future(%)	Price (%)	06-Aug	03-Aug	COC Chg.	OI Rs. Cr.
CUMMINSIND	19	-3	11	-10	20	26
ROLTA	18	-5	10	7	3	30
IFCI	17	5	11	2	9	742
AIRDECCAN	15	0	12	-5	17	39
LITL	14	-3	13	9	4	87

Top Losers

Company	Future(%)	Price (%)	06-Aug	03-Aug	COC Chg.	OI Rs. Cr.
IOB	-16	-3	6	6	0	15
NAGARCONST	-6	2	-2	5	-7	46
IVRCLINFRA	-6	-3	-10	-10	0	165
NAGARFERT	-5	4	6	0	6	104
BEL	-5	1	2	0	2	113

Top Gainers & Losers Price Wise
Top Gainers

Company	Future(%)	Price (%)	06-Aug	03-Aug	COC Chg.	OI Rs. Cr.
IFCI	17	5	11	2	9	742
NAGARFERT	-5	4	6	0	6	104
INDIACEM	6	4	3	0	3	167
STROPTICAL	-3	4	11	7	4	59
NATIONALUM	2	3	-85	-68	-17	134

Top Losers

Company	Future(%)	Price (%)	06-Aug	03-Aug	COC Chg.	OI Rs. Cr.
HDIL	4	-6	4	5	-1	464
VSNL	4	-5	-13	-29	16	87
PATNI	7	-5	9	12	-3	301
JSWSTEEL	13	-5	13	10	3	145
POLARIS	4	-5	12	8	4	74

THE INDICATOR**Across the Atlantic**

Stocks rallied to a sharply higher close Monday, sending the Dow industrials up by over 280 points for its best day since 2003, as investors snapped up financial shares, which have been heavily hit in recent weeks amid concerns about credit markets and bad home loans

The **Dow Jones Industrial Average** jumped 286.87 points, or 2.18%, to 13,468.78. It was the Dow's eighth 100-point move in the last 11 sessions, highlighting the recent volatility that traders have had to endure.

Dow components **American Express** , **AIG** , and **Citigroup** supported the index with gains of 4.7% or more.

The **S&P 500** reversed early weakness and added 34.61 points, or 2.42%, to 1467.67. The **Nasdaq Composite** climbed 36.08 points, or 1.44%, at 2547.33.

The big gains came in a period of heavy volatility for the market as investors fret about the mounting woes in the debt markets. In particular, the last hour of trading has seen a rush of buying and selling, and indeed, the latest rally accelerated right before the closing bell.

Crude-oil futures tumbled nearly 5% Monday, extending their steep losses from last week, as traders locked in gains amid worries that a slowdown in the U.S. economy will lower demand for oil. Crude for September delivery ended down \$3.42, or nearly 5%, at \$72.06 a barrel on the New York Mercantile Exchange. That was the contract's lowest closing level since July 3. The contract had set an all-time record close of \$78.21 a barrel last week.

Bear Stearns, which was hit by news Friday that Standard & Poor's had cut its outlook on the company, said over the weekend that Warren Spector, its co-president and co-chief operating officer, has resigned. Spector had overseen the bank's asset-management division, the home of two hedge funds that blew up after making bets on the subprime mortgage markets.

Bear Stearns was lower for most of the day, but finished with a late-session gain of \$5.46, or 5%, to \$113.81.

Despite Bear's early weakness, the financial sector was boosted by a UBS upgrade of **Merrill Lynch** to buy from neutral. UBS cited the bank's valuation after a 12% drop over that last two weeks. The stock added \$4.50, or 6.4%, to \$74.55.

UBS also upgraded **TD Ameritrade** to buy, and the firm reiterated its buy rating on **Deutsche Bank** . TD Ameritrade finished with a gain of 1.9% at \$16.29. Deutsche Bank rose 2.9% to end at \$138.08.

However, not all was positive in the financial sector. Shares of American Home were halted on the **New York Stock Exchange** after news that the company has filed for bankruptcy protection

The filing comes after the lender's Friday's announcement that it would slash roughly 90% of its workforce. Last week, the company's stock dove 93%

Traders are hoping the **Federal Reserve** will address the potential credit crisis when it releases its rate policy statement Tuesday afternoon. No change in the target fed funds rate is expected, but the language contained in the accompanying statement will be closely scrutinized.

It will be more about what the Fed says rather than what it does.

THE INDICATOR
Support-Resistance Levels – August 07, 2007

	Close	Support 1	Support 2	Resist. 1	Resist. 2	3 Mths High	3 Mths Low
BSE – SENSEX	14903.03	14800.00	14640.00	15160.00	15400.00	15868.85	13554.34
S&P CNX NIFTY	4339.50	4305.00	4255.00	4410.00	4480.00	4647.95	3981.15
ACC LTD	979.50	964.00	950.00	1002.00	1021.00	1159.00	751.70
AD LABS FILMS	473.85	463.00	457.00	482.00	491.00	595.00	440.00
ALLAHABAD BANK	90.60	89.00	88.00	93.00	94.00	107.90	75.75
AMBUJA CEMENT	126.50	125.00	123.00	130.00	133.00	140.85	105.00
ANDHRA BANK	84.55	83.00	82.00	86.00	88.00	99.15	80.05
BAJAJ AUTO	2299.40	2262.00	2230.00	2351.00	2397.00	2767.20	2058.00
BANK OF BARODA	294.55	289.00	285.00	301.00	306.00	348.50	242.20
BANK OF INDIA	241.60	238.00	234.00	247.00	252.00	275.90	182.00
BPCL	311.35	307.00	303.00	319.00	325.00	400.00	301.15
BHARTI AIRTEL	866.90	854.00	842.00	888.00	905.00	959.00	790.00
BHEL	1677.45	1649.00	1625.00	1714.00	1747.00	1895.00	1177.78
CANARA BANK	257.10	252.00	249.00	262.00	268.00	298.00	211.00
CENTURY TEXT	709.00	698.00	688.00	725.00	739.00	767.90	550.25
COLGATE	408.40	399.00	393.00	414.00	423.00	416.80	349.00
DLF	580.65	571.00	563.00	593.00	605.00	679.00	526.60
ESSAR OIL	48.20	47.00	46.00	50.00	51.00	65.10	47.80
GAS AUTHORITY (I)	323.05	318.00	314.00	331.00	337.00	350.00	271.05
GMR INFRA	828.70	808.00	797.00	840.00	857.00	1009.00	418.00
GUJ NARMADA	129.25	128.00	126.00	133.00	135.00	142.00	99.45
HERO HONDA	649.45	639.00	630.00	665.00	678.00	744.85	624.80
HIND PETROLEUM	249.95	247.00	243.00	256.00	261.00	310.00	243.05
HIND UNILEVER	200.10	198.00	195.00	206.00	210.00	220.00	180.15
ICICI BANK	886.90	879.00	866.00	913.00	931.00	1010.00	822.15
IDBI	107.00	105.00	104.00	109.00	112.00	126.40	89.10
IDEA CELLULAR	123.25	122.00	120.00	127.00	129.00	135.40	110.00
IFCI LTD	63.75	62.00	61.00	65.00	66.00	64.20	44.85
INDIA CEMENTS	224.80	219.00	215.00	227.00	232.00	237.30	162.50
INDIA INFOLINE	666.05	652.00	643.00	678.00	691.00	853.00	404.00
INDIAN BANK	143.45	142.00	141.00	150.00	153.00	178.50	114.80
INDIAN HOTELS	134.55	133.00	131.00	138.00	141.00	158.00	133.05
INDIAN OIL CORP	401.25	396.00	390.00	411.00	419.00	524.40	393.00
IOB	124.90	123.00	122.00	129.00	131.00	140.65	99.00
INDIAN PETRO	353.55	348.00	343.00	362.00	369.00	386.50	305.20
INFOSYS	1865.30	1853.00	1827.00	1927.00	1964.00	2050.00	1715.00
ITC LTD	172.55	169.00	167.00	176.00	179.00	179.90	145.00
IVRCL INFRA	384.90	379.00	374.00	394.00	402.00	430.45	293.95
L&T	2448.40	2415.00	2381.00	2511.00	2560.00	2732.00	1652.15
MTNL	139.75	138.00	136.00	143.00	146.00	171.00	137.10
M&M	679.75	667.00	657.00	693.00	707.00	838.70	654.00
MARUTI UDYOG	824.90	817.00	806.00	849.00	866.00	876.00	715.05
MATRIX LABS	236.00	233.00	230.00	242.00	247.00	274.00	190.00
MOSER BAER (I)	284.50	280.00	276.00	292.00	297.00	343.17	236.03
NDTV LTD	359.55	354.00	349.00	368.00	375.00	459.70	345.00
NTPC	163.55	162.00	159.00	168.00	171.00	170.50	148.35
ONGC CORPN	870.70	859.00	846.00	892.00	910.00	959.00	826.70

THE INDICATOR

	Close	Support 1	Support 2	Resist. 1	Resist. 2	3 Mths High	3 Mths Low
ORCHID CHEM	206.45	205.00	202.00	213.00	217.00	277.70	205.50
ORIENTAL BANK	231.85	228.00	225.00	237.00	241.00	263.90	190.00
PARSVNATH	332.30	325.00	320.00	337.00	344.00	401.90	302.15
PATEL ENGG	431.65	425.00	419.00	442.00	451.00	489.30	370.00
POLARIS	105.05	104.00	103.00	109.00	111.00	177.20	104.60
PFC	174.70	172.00	169.00	179.00	182.00	206.70	122.25
PNB	503.45	493.00	486.00	512.00	522.00	594.00	480.00
RANBAXY LABS	370.05	364.00	358.00	378.00	385.00	406.95	339.25
REL CAPITAL	1132.20	1113.00	1097.00	1157.00	1179.00	1304.00	761.65
RELIANCE INDS	1780.15	1752.00	1728.00	1822.00	1857.00	1948.50	1531.25
RNRL	43.45	42.00	41.00	45.00	46.00	44.40	26.30
REL PETROLEUM	112.75	110.00	109.00	115.00	117.00	119.70	79.00
SATYAM	461.55	455.00	449.00	473.00	482.00	523.05	436.00
SIEMENS	1232.25	1209.00	1192.00	1257.00	1281.00	1494.75	1181.00
SOBHA DEV	835.40	826.00	815.00	859.00	876.00	987.40	817.10
STATE BANK	1681.90	1642.00	1619.00	1707.00	1740.00	1799.00	1070.00
SAIL	146.45	143.00	141.00	148.00	151.00	167.20	123.00
SUZLON ENERGY	1196.45	1182.00	1165.00	1228.00	1252.00	1568.80	1111.00
SYNDICATE BANK	79.65	78.00	77.00	81.00	83.00	91.00	69.80
TATA CHEM	251.45	248.00	244.00	258.00	263.00	275.00	227.00
TATA MOTORS	648.80	638.00	629.00	663.00	676.00	830.00	575.00
TATA POWER	670.20	665.00	655.00	691.00	705.00	743.30	551.35
TATA STEEL	649.35	635.00	626.00	660.00	673.00	732.40	562.40
TATA TEA	713.95	706.00	696.00	733.00	748.00	1021.50	705.00
TCS	1099.45	1083.00	1068.00	1126.00	1148.00	1289.90	1074.00
TITAN INDS	1160.25	1135.00	1119.00	1180.00	1203.00	1375.05	971.55
UNION BANK	144.80	142.00	140.00	148.00	151.00	168.30	105.00
UNITECH	520.65	523.00	516.00	544.00	554.00	623.00	438.50
VSNL	429.00	425.00	419.00	442.00	451.00	506.20	422.80
WIPRO LTD	457.40	453.00	447.00	471.00	480.00	627.30	453.35
ZEE TELEFILMS	306.30	302.00	298.00	314.00	320.00	361.85	270.05

THE INDICATOR

Anagram Research is also available on Bloomberg < Code ANGM > and ISI Emerging Markets.

Disclaimer

This document has been prepared by Anagram Stock broking Ltd. (Anagram), For use by the recipient only and not for circulation. The information and opinions contained in the document have been compiled from sources believed to be reliable. Anagram does not warrant its accuracy, completeness and correctness. This document is not, and should not be construed as, an offer to sell or solicitation to buy any securities. This document may not be reproduced, distributed or published, in whole or in part, by any recipient hereof for any purpose without prior permission from us. Anagram and the analyst(s), including his dependant family members may have an interest in the securities recommended above

Copyright in this document vests exclusively with Anagram Stock broking Limited

To unsubscribe, send a mail to unsubscribechinta@gmail.com