



Punter's Call

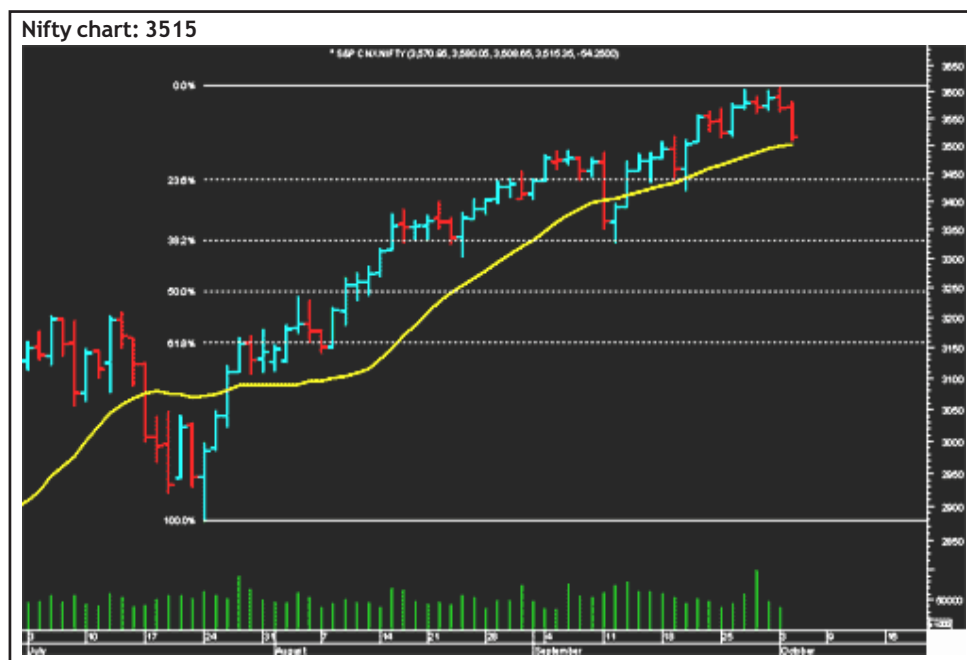
Keep an eye on 3500 support

The Nifty closed the session on a weak note around its short-term target of 3500. In the short term the index should find support around the breakout level and the 20-DMA at 3500. A break below the 20-DMA should see the Nifty test 3450, which is the 23.6% retracement level of the rise from 2878 to 3606. The index will continue to trade amid high volatility and on any intra-day bounce from 3500, it will face resistance around the 10-DMA at 3552. The short-term bias is down with a target of 3500.

Tisco has a support at Rs521 and on the upside it could test Rs535. Reliance Industries looks strong above Rs1,140, but should face resistance at Rs1,165. Wipro looks weak and it has a support at Rs498. The stock faces a resistance at Rs514.

Market Breadth





	BSE	NSE
Advances	1,031	454
Declines	1,439	833
Unchanged	64	21



Short Term Trend

	Target	Trend	Reversal	Support/Resistance
Short term (Nifty)	3500	↓	Up above 3600	3550 / 3600





Icon guide

 Up	 Down	 Downswing matures	 Upswing matures
--	--	---	---

Medium Term Trend

	Target	Trend	Reversal	Support/Resistance
Medium term (Nifty)	3620	↑	Down below 3400	3400 / 3600

Icon guide

 Up	 Down	 Downswing matures	 Upswing matures
--	--	---	---

Smart Charts > Open Long Calls

Date	Recommendation	Stop Loss/ Reversal (Intra-day)	Stop Loss/ Reversal (Closing)	Buy Price	Closing Price	Potential % P/L at CMP	Targets
03-10-06	Mahindra & Mahindra	-	629.4	692.0	678.0	-2%	749-809
28-09-06	Gateway Distriparks	-	148.4	164.0	163.2	0%	180-195
25-09-06	Satyam	-	793.4	834.0	802.9	-4%	920-980
25-09-06	Bajaj Auto	-	2,734.0	2,880.0	3,087.3	7%	3,150-3,180
19-09-06	Tricom India	-	197.4	215.0	206.5	-4%	250
19-09-06	Hindustan Motor	-	37.7	41.8	40.6	-3%	46-50
19-09-06	Exide Industries	-	38.7	41.8	38.9	-7%	46-50
19-09-06	Sterlite Optical	-	158.4	174.0	165.1	-5%	200-206
18-09-06	Finolex Industries	-	84.4	99.4	94.4	-5%	129-135
14-09-06	Balrampur Chini	-	90.0	98.0	101.5	4%	115
14-09-06	SREI International	-	47.0	53.0	50.1	-5%	65
14-09-06	Mercator Lines	-	39.4	43.0	42.1	-2%	50-52
13-09-06	Bharti	-	449.4	436.6	461.3	6%	510-540
08-09-06	Jindal Saw	-	294.4	323.0	316.8	-2%	379
08-09-06	LIC Housing Finance	-	153.0	166.0	171.1	3%	190
08-09-06	Nalco	-	198.0	214.0	214.9	0%	250
08-09-06	Nirma	-	374.4	391.2	391.1	0%	424
04-09-06	Praj Industries	159.7	-	183.5	161.4	-12%	214
18-08-06	Aptech Training	-	110.0	123.0	131.0	6%	155

Advantage Options

Date	Name	Expiry	Reco Price	Strike Price	CMP (Rs)	Target (Rs)	Stop Loss (Rs)
25-09-06	Buy Satyam Oct Call	26-Oct	25	860	15.05	72	12

Momentum Calls > Open Long Calls

For the short term—1 to 5 days

Stock	Product type	Action date	Stop loss	Closing Price	Target 1	Target 2
NTPC	Cash / Future	03-10-06	128.4	130.2	138	143
IPCL	Cash / Future	21-09-06	299.7	300.5	325	339

NOTE: Kindly note that all stop losses in Momentum Calls are on an intra-day basis.

Momentum Calls > Open Short Calls

For the short term—1 to 5 days

Stock	Product type	Action date	Stop loss	Closing Price	Target 1	Target 2
Wipro	Cash / Future	04-10-06	528	509	490	-
Nifty Future	Cash / Future	29-09-06	Profit Booked	3545	3570	3545

NOTE: Kindly note that all stop losses in Momentum Calls are on an intra-day basis.

Trendy Levels

Sensex		Nifty	
Support	Resistance	Support	Resistance
12178	12250	3500	3540
12070	12360	3480	3570
11940	12440	3450	3600
20DSMA	40DEMA	20DSMA	40DEMA
12086	11798	3501	3428
BSE Sensex: 12204		Nifty: 3515	

Day Trader's HIT List

For October 05, 2006

Scrip Name	Support Levels		Close (Rs)	Resistance Levels		Action
	S1	S2		R2	R1	
NIFTY Futures	3480	3510	3519	3530	3550	Go long above R2. Go short below S2.
ACC	965	975	979	983	991	Go long above R2. Go short below S2.
Century	495	500	503	512	515	Buy with a stop below S2.
Hindalco	167	169	172	175	177	Buy with a stop below S2.
Infosys	1775	1795	1803	1812	1830	Go long above R2. Go short below S2.
M & M	666	675	678	682	690	Go long above R2. Go short below S2.
Maruti	935	939	947	953	956	Go short with a stop above R2.
MTNL	151	153	155	158	161	Buy with a stop below S2.
ONGC	1110	1120	1133	1140	1150	Go short with a stop above R2.
Reliance	1135	1142	1149	1160	1165	Buy with a stop below S2.
Reliance Capital	558	560	568	572	575	Go short with a stop above R2.
Satyam	790	798	803	805	812	Go long above R2. Go short below S2.
SBI	1000	1010	1015	1020	1030	Go long above R2. Go short below S2.
TCS	970	978	988	993	1000	Go short with a stop above R2.
Tata Steel	515	519	523	532	540	Buy with a stop below S2.
Tata Motors	870	875	880	890	900	Buy with a stop below S2.
Ranbaxy	412	415	421	423	426	Go short with a stop above R2.
VSNL	386	390	397	404	408	Go short with a stop above R2.
Titan	765	770	781	785	790	Go short with a stop above R2.
Wipro	495	500	509	514	518	Go short with a stop above R2.
Rcom	333	338	340	344	348	Buy above R2.

*Note: Closing price of Nifty futures is last traded price of Nifty futures on NSE

For Private Circulation only

[Home](#)

Disclaimer

"This document has been prepared by Sharekhan Ltd.(SHAREKHAN) This Document is subject to changes without prior notice and is intended only for the person or entity to which it is addressed to and may contain confidential and/or privileged material and is not for any type of circulation. Any review, retransmission, or any other use is prohibited. Kindly note that this document does not constitute an offer or solicitation for the purchase or sale of any financial instrument or as an official confirmation of any transaction.

Though disseminated to all the customers simultaneously, not all customers may receive this report at the same time. SHAREKHAN will not treat recipients as customers by virtue of their receiving this report.

The information contained herein is from publicly available data or other sources believed to be reliable. While we would endeavour to update the information herein on reasonable basis, SHAREKHAN, its subsidiaries and associated companies, their directors and employees ("SHAREKHAN and affiliates") are under no obligation to update or keep the information current. Also, there may be regulatory, compliance, or other reasons that may prevent SHAREKHAN and affiliates from doing so. We do not represent that information contained herein is accurate or complete and it should not be relied upon as such. This document is prepared for assistance only and is not intended to be and must not alone be taken as the basis for an investment decision. The user assumes the entire risk of any use made of this information. Each recipient of this document should make such investigations as it deems necessary to arrive at an independent evaluation of an investment in the securities of companies referred to in this document (including the merits and risks involved), and should consult its own advisors to determine the merits and risks of such an investment. The investment discussed or views expressed may not be suitable for all investors. We do not undertake to advise you as to any change of our views. Affiliates of Sharekhan may have issued other reports that are inconsistent with and reach different conclusion from the information presented in this report.

This report is not directed or intended for distribution to, or use by, any person or entity who is a citizen or resident of or located in any locality, state, country or other jurisdiction, where such distribution, publication, availability or use would be contrary to law, regulation or which would subject SHAREKHAN and affiliates to any registration or licensing requirement within such jurisdiction. The securities described herein may or may not be eligible for sale in all jurisdictions or to certain category of investors. Persons in whose possession this document may come are required to inform themselves of and to observe such restriction.

SHAREKHAN & affiliates may have used the information set forth herein before publication and may have positions in, may from time to time purchase or sell or may be materially interested in any of the securities mentioned or related securities. SHAREKHAN may from time to time solicit from, or perform investment banking, or other services for, any company mentioned herein. Without limiting any of the foregoing, in no event shall SHAREKHAN, any of its affiliates or any third party involved in, or related to, computing or compiling the information have any liability for any damages of any kind. Any comments or statements made herein are those of the analyst and do not necessarily reflect those of SHAREKHAN."