

ANALYSIS OF FUTURES & OPTIONS MARKET

Nifty (4655.25)

JUNE FUTURE

Price: 4660.55

Premium: 5.30

Open Interest: 30884700

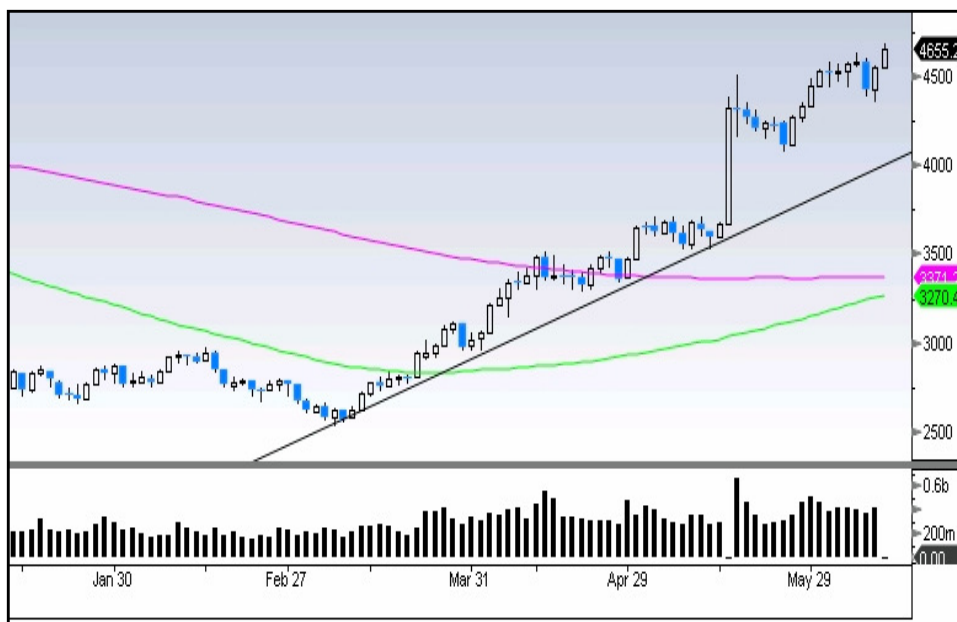
JULY FUTURE

Price: 4664.75

Premium: 9.50

Open Interest: 1087300

NIFTY DAILY CHART



Trading Calls

◆ Long Bharti Airtel Future

Buy Bharti Airtel June Future @ Rs 836/-
Target: Rs 908/- SL: Rs 793/- Lot Size: 500

◆ Long NTPC Call Option

Buy June 220 Call option @ Rs 9/- Target: Rs 18/- Lot Size: 1625

HIGHLIGHTS

- ⇒ Nifty continued to gain strength and moved past the crucial level of 4620. It managed to sustained above that level throughout the day and is likely to move further up in the coming days
- ⇒ Although the heavyweights gained, profit booking emerged in many mid-cap stocks and the advance decline ratio too was negative at almost 4:5
- ⇒ Nifty Call options of strike 4600 further shed open interest by 16625 lots while Put options of strike 4700 had a build up of 17817 lots
- ⇒ Nifty Put Call ratio (OI) stands at 1.18 with the total open interest in Call options at 750,632 lots and that in Put options at 885,562 lots
- ⇒ Lanco Infratech, Educomp Solutions, Bharti Airtel, LIC Housing Finance, Ranbaxy Laboratories, NTPC, Reliance Communications, Lupin Ltd and Grasim Industries appear strong
- ⇒ Volatility Index fell by 0.71% from 40.76 to 40.47

**NIFTY
PIVOT POINTS**

**S2
4495**

**S1
4575**

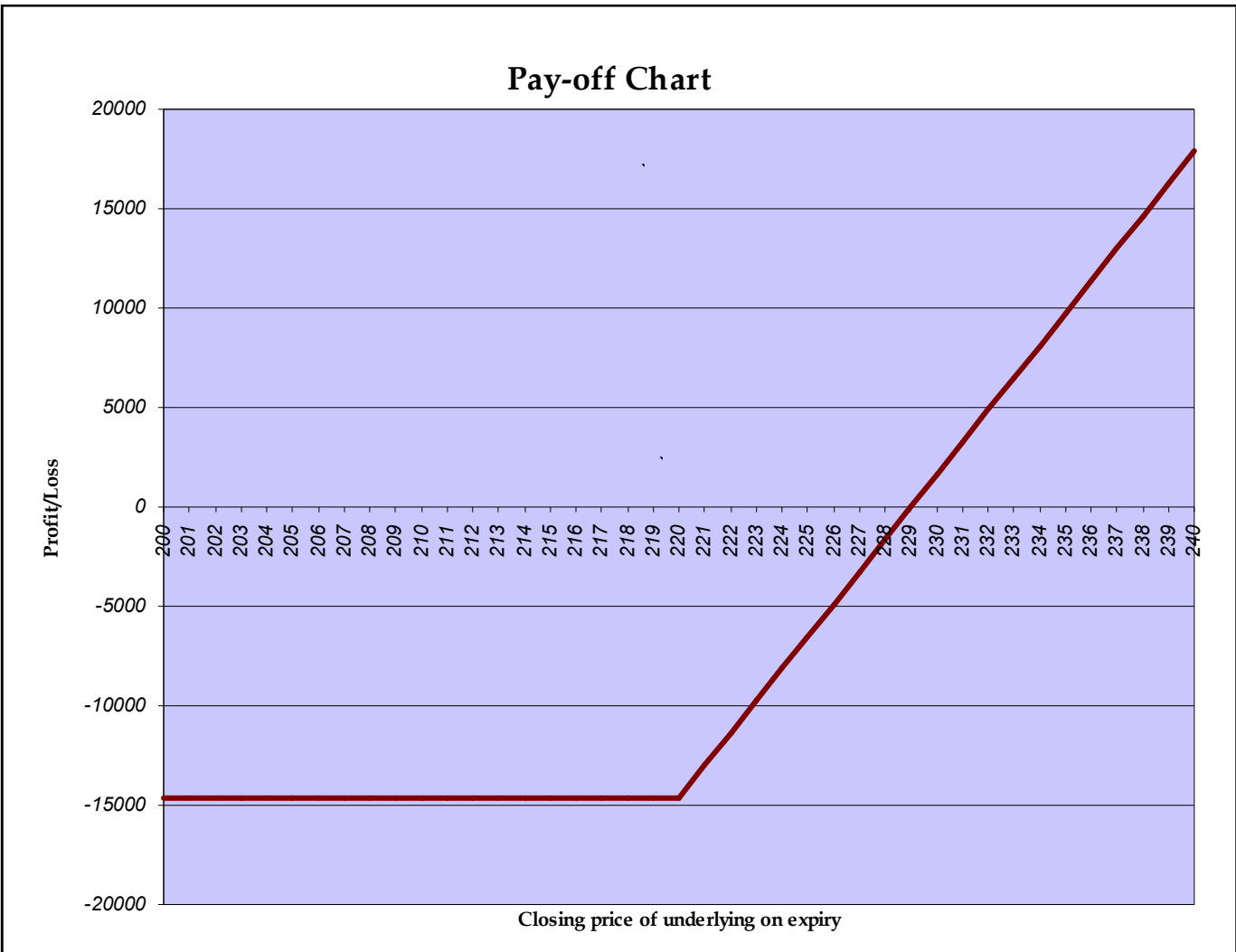
**PIVOT
4632**

**R1
4712**

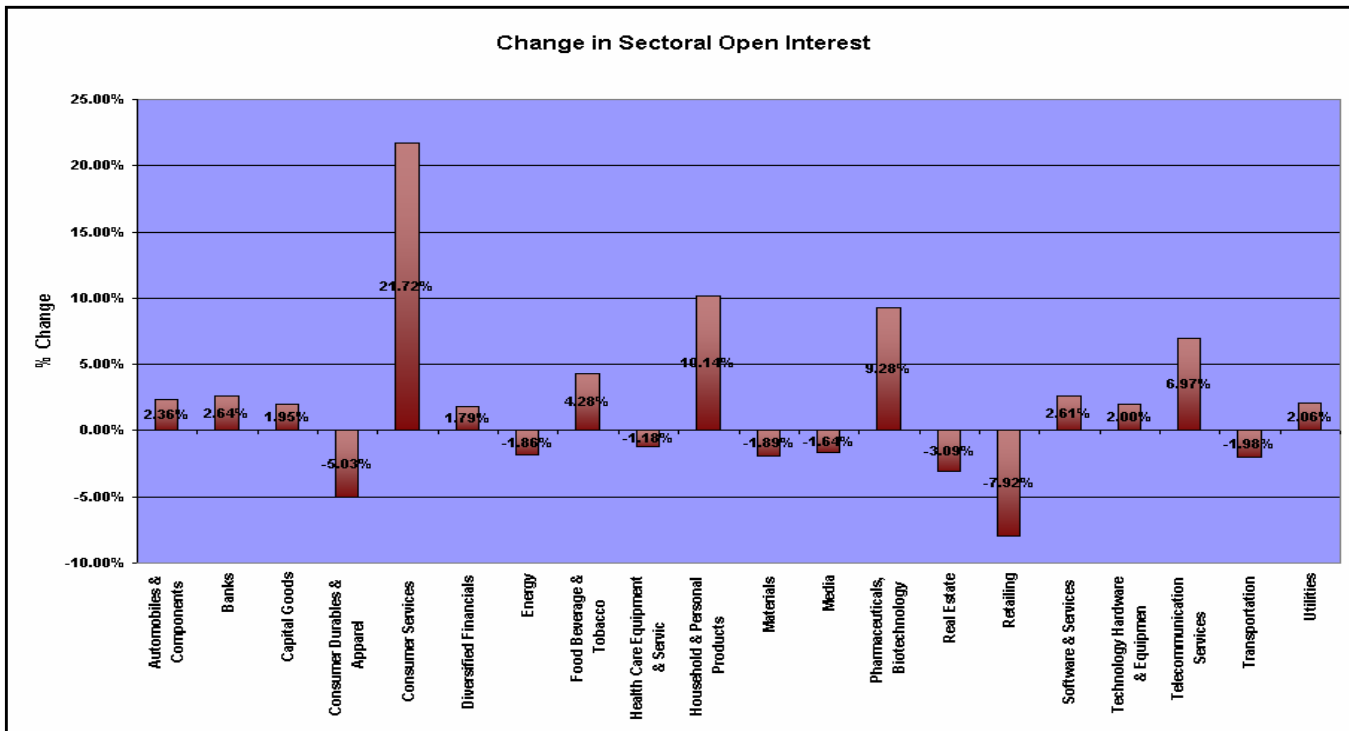
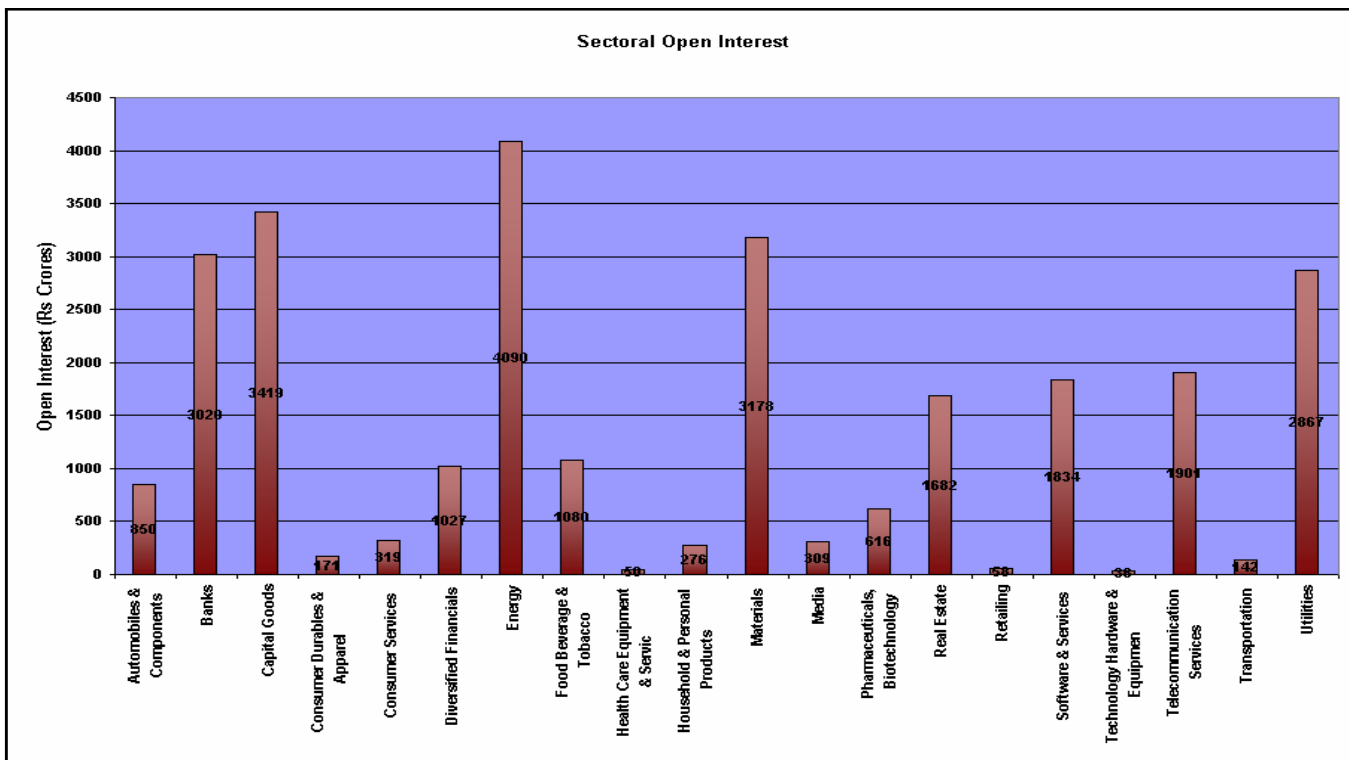
**R2
4769**

OPTION STRATEGY

Scrip/Index: NTPC
Strategy: Long Call option
Current Price of Underlying: 219.35 Lot Size: 1625
Buy June 220 Call option @ Rs 9/-
Profitable when closing price of NTPC is above Rs 229/- on expiry
Maximum Potential Profit: Unlimited Maximum Possible Loss: Rs 14,625/-
Time to Expiry: 15 days



STOCK FUTURES OPEN INTEREST

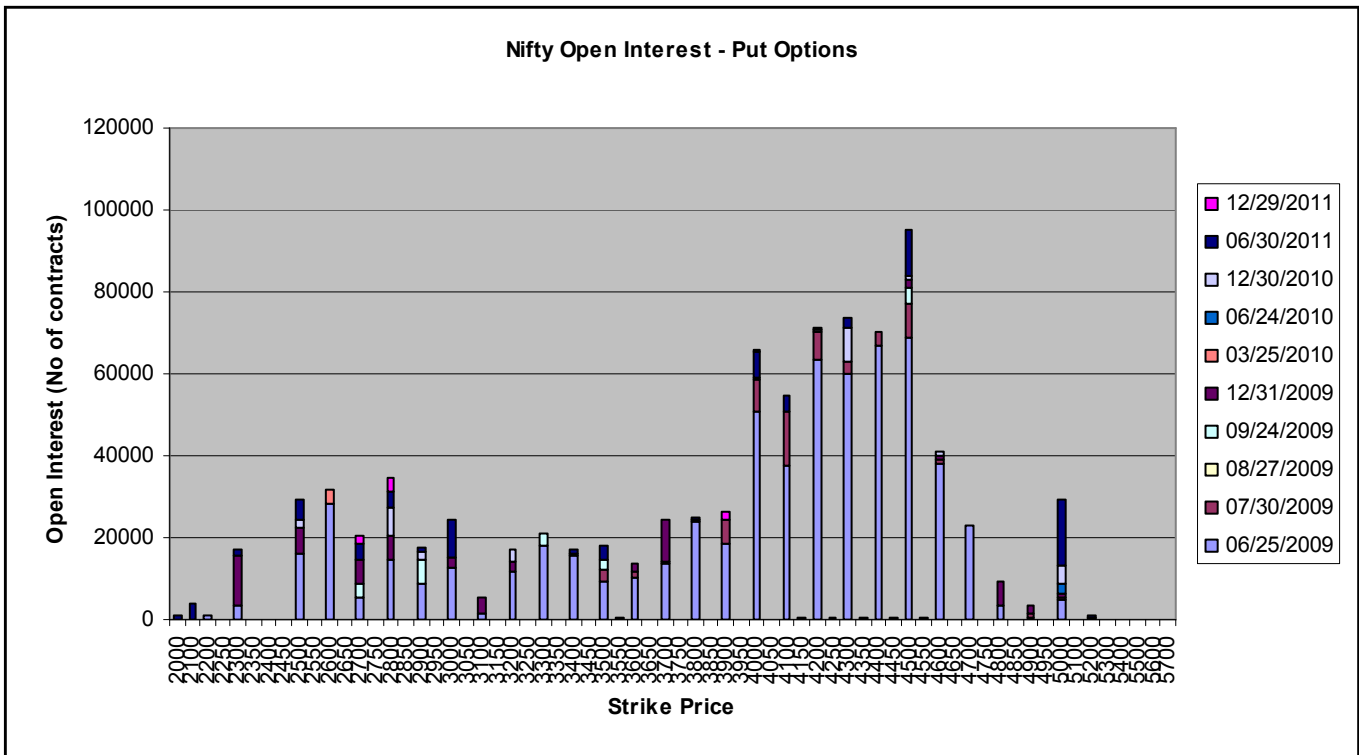
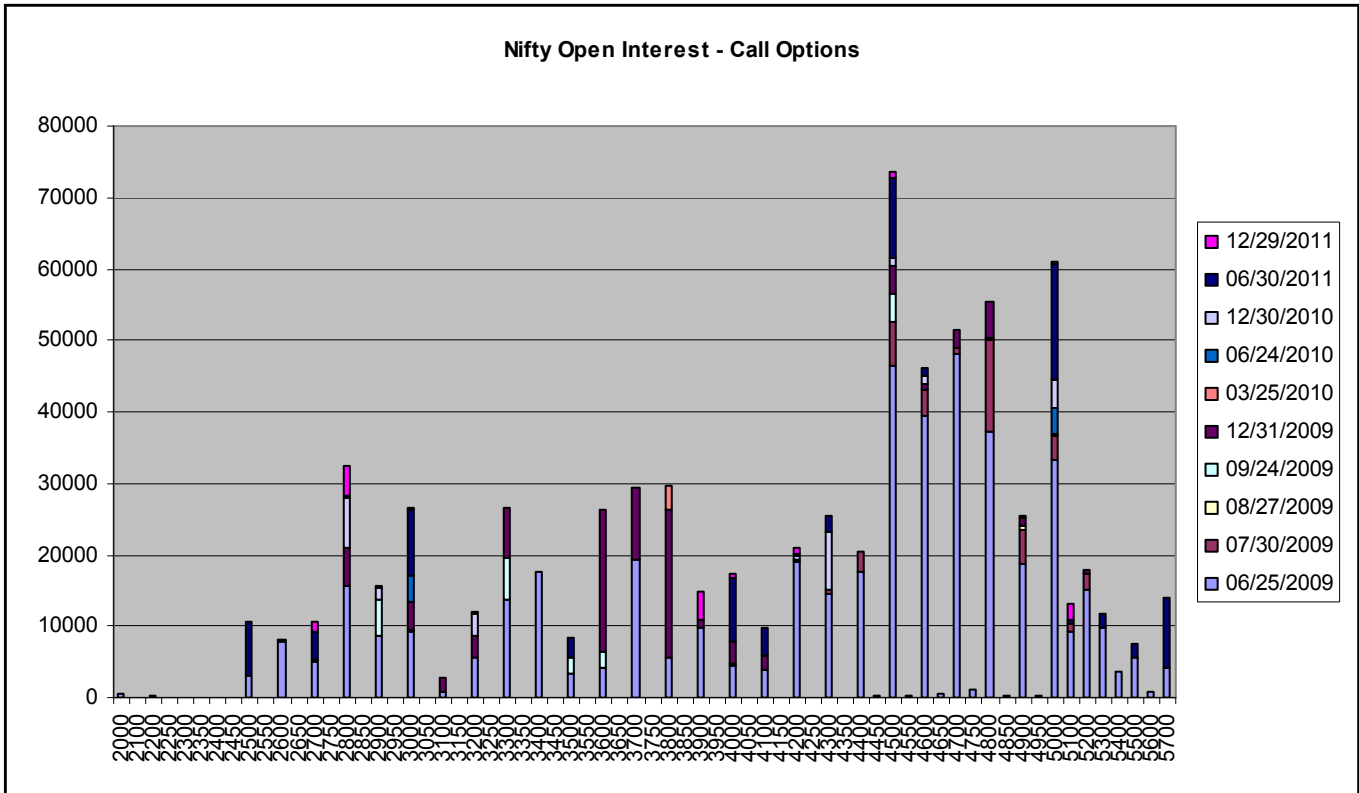


TOP PRICE GAINERS (STOCK FUTURES)				TOP PRICE LOSERS (STOCK FUTURES)			
<i>Scrip</i>	<i>Lot Size</i>	<i>Spot Price</i>	<i>% Change</i>	<i>Scrip</i>	<i>Lot Size</i>	<i>Spot Price</i>	<i>% Change</i>
Everonn Systems	800	447.95	28.02	HDIL	3096	267.20	(5.80)
Lanco Infratech	2550	442.95	14.22	Aban Offshore	400	1084.75	(5.29)
NIIT Ltd	8700	64.80	11.92	Monnet Ispat	1800	261.75	(4.75)
Firstsource Solutions	19000	29.75	11.42	Jaiprakash Hydro	12500	93.15	(3.52)
India Cements	2900	177.50	10.76	Network 18 Media	2000	145.75	(3.48)

SIGNIFICANT OPEN INTEREST ADDITIONS (STOCK FUTURES)							
<i>Contract</i>	<i>Price</i>	<i>% Change</i>	<i>Volume Spot</i>	<i>% Change</i>	<i>Open Interest</i>	<i>Absolute Change</i>	<i>% Change</i>
Everonn Systems	447.95	28.02	5523102	689.80	308800	212800	221.67
NIIT Ltd	64.80	11.92	16418925	140.80	6124800	1696500	38.31
Bata India	163.05	5.64	492431	159.27	445200	117600	35.90
LIC Housing Finance	588.15	10.25	2316438	58.11	1701700	442000	35.09
Canara Bank	259.15	(0.54)	863085	(17.63)	1233600	224000	22.19
Dr Reddys Laboratories	751.65	5.60	1117227	74.25	1036000	175200	20.35

SIGNIFICANT OPEN INTEREST REDUCTIONS (STOCK FUTURES)							
<i>Contract</i>	<i>Price</i>	<i>% Change</i>	<i>Volume Spot</i>	<i>% Change</i>	<i>Open Interest</i>	<i>Absolute Change</i>	<i>% Change</i>
Tech Mahindra	782.80	5.22	9930303	55.89	798000	(440400)	(35.56)
Voltas Ltd	139.50	(1.66)	6631800	(42.92)	2251800	(1139400)	(33.60)
Jaiprakash Hydro	93.15	(3.52)	39668525	(17.36)	13087500	(4175000)	(24.19)
Sesa Goa	180.10	2.74	17716125	(30.73)	10128000	(2418000)	(19.27)
RIIL	1122.30	(1.90)	929369	(31.79)	396800	(76800)	(16.22)

OPTIONS OPEN INTEREST ANALYSIS



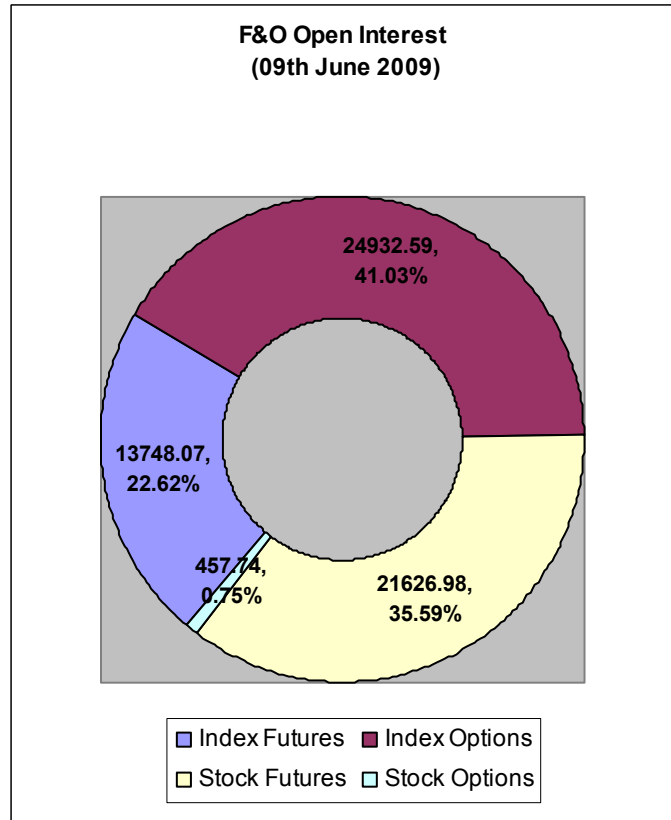
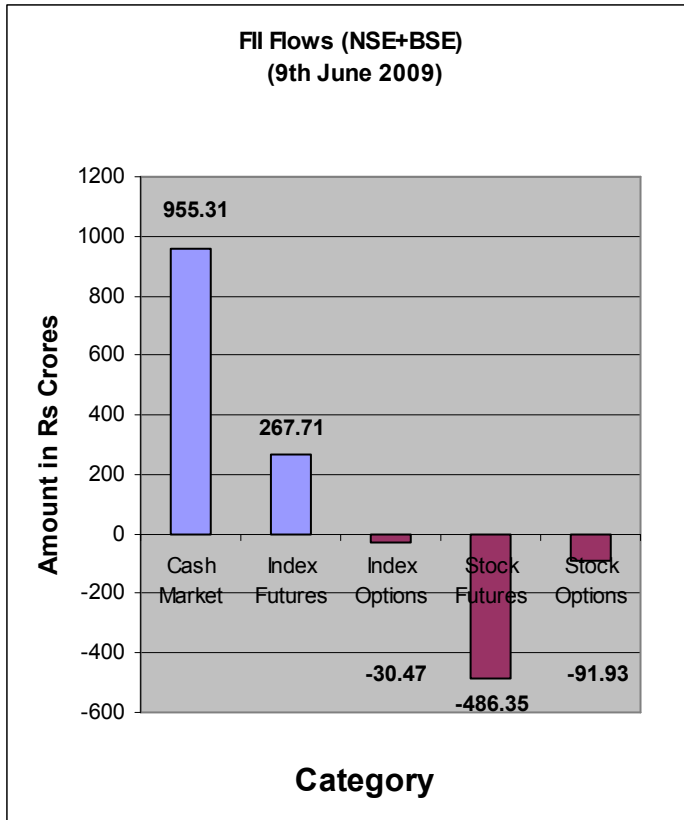
MOST ACTIVE FUTURES					
<i>Name</i>	<i>Expiry Date</i>	<i>Number of Contracts</i>	<i>Price</i>	<i>Open Interest</i>	<i>Value of Underlying</i>
NIFTY FUTURE	25 JUN 09	577590	4660.55	30884700	4655.25
RELIANCE FUTURE	25 JUN 09	19676	2327.30	7146600	2320.20
SUZLON FUTURE	25 JUN 09	11605	123.65	41580000	123.60
UNITECH FUTURE	25 JUN 09	10609	88.95	54666000	88.75
RCOM FUTURE	25 JUN 09	16124	351.95	19923400	350.25
TATASTEEL FUTURE	25 JUN 09	10849	440.00	10784624	439.30

MOST ACTIVE NIFTY OPTIONS							
<i>Contract</i>	<i>Price (Premium)</i>	<i>Volume (No. of Lots)</i>	<i>Open Interest</i>	<i>Delta</i>	<i>Gamma</i>	<i>Theta</i>	<i>Vega</i>
JUNE CE 4700	120.65	164645	2403600	0.470	0.0011	4.590	3.8089
JUNE PE 4500	76.60	156179	3448000	(0.313)	0.0010	4.196	3.4001
JUNE PE 4600	113.05	118554	1890250	(0.417)	0.0011	4.530	37379
JUNE CE 4800	81.70	105058	1867000	0.360	0.0011	4.288	3.5895
JUNE CE 4600	172.45	92177	1972150	0.583	0.0011	4.578	3.7371
JUNE PE 4400	50.75	93291	3348400	(0.225)	0.0008	3.646	2.8909

MOST ACTIVE STOCK CALLS (BY VALUE)			
<i>Name & Month</i>	<i>Strike</i>	<i>No. of contracts</i>	<i>Price</i>
Reliance Jun	2310	1140	97.65
SBIN Jun	1800	1308	70.40
NTPC Jun	220	1615	9.05
Reliance Jun	2400	747	59.45
RCom Jun	350	892	23.35

MOST ACTIVE STOCK PUTS (BY VALUE)			
<i>Name & Month</i>	<i>Strike</i>	<i>No. of contracts</i>	<i>Price</i>
SBIN Jun	1740	2022	68.45
Tatasteel Jun	400	186	11.60
Reliance Jun	2310	137	80.00
Tatasteel Jun	440	113	27.55
Reliance Jun	2250	110	53.35

FII ACTIVITY



FOR PRIVATE CIRCULATION ONLY

Disclaimer

The trading ideas discussed or recommended in this report may not be suitable for all investors. Investors should use this research as one input into formulating an investment opinion. Additional inputs should include, but are not limited to, the review of other. This is not an offer (or solicitation of an offer) to buy/sell the securities/instruments mentioned or an official confirmation. Microsec Capital Limited is not responsible for any error or inaccuracy or for any losses suffered on account of information contained in this report. This report does not purport to be offer for purchase and sale of share/ units. We and our affiliates, officers, directors, and employees, including persons involved in the preparation or issuance of this material may: (a) from time to time, have long or short positions in, and buy or sell the securities thereof, of company (ies) mentioned herein or (b) be engaged in any other transaction involving such securities and earn brokerage or other compensation discussed herein or act as advisor or lender or borrower to such company (ies) or have other potential conflict of interest with respect to any recommendation and related information and opinions. The same persons may have acted upon the information contained here. No part of this material may be duplicated in any form and/or redistributed without Microsec Capital Limited' prior written consent.