



high noon



Punter's Call

Hovering near 3660

The Nifty opened on a positive note and is currently trading above the 3660 level, which is a strong support. On intraday basis the Nifty will trade with high volatility. It will find a strong support at 3660 and on break below 3660, the Nifty will slide down to 3600 levels. On crossing above 3660 the Nifty can test 3700 levels. Any rise towards 3700 should be used as an exit opportunity. As long as the Nifty is trading below its 40-day exponential moving average (which is at 3965), our bias for the near term remains Down.

Aptech can bounce till Rs210 with support at Rs190. SAIL has strong support at Rs94 and resistance at Rs100. Tisco has support at Rs410 and resistance at Rs425.

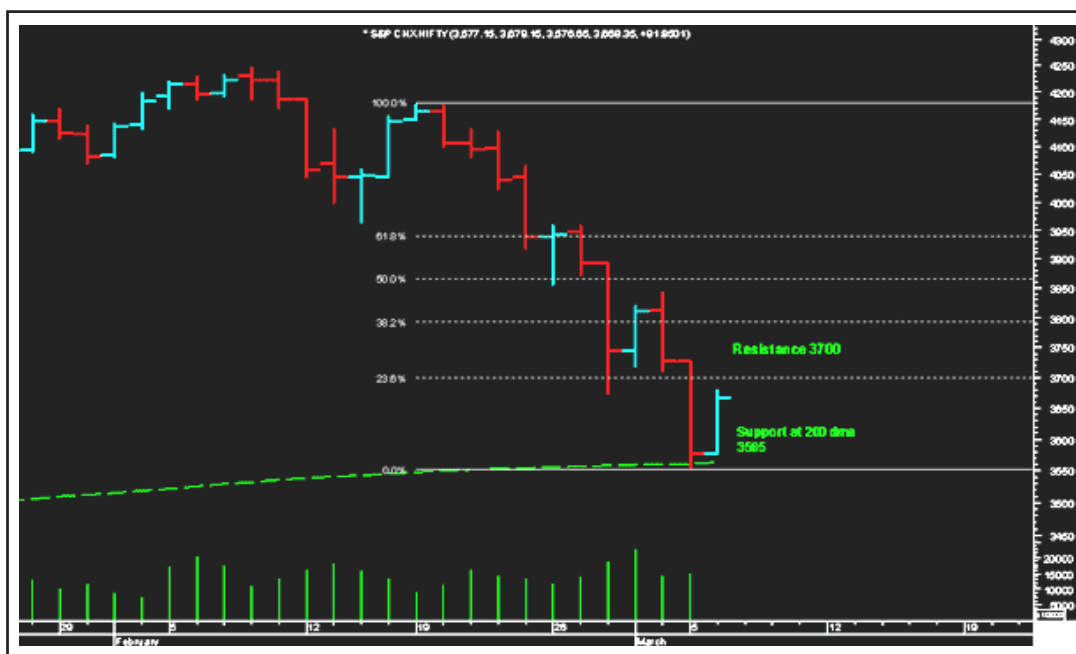
Updated at 12:00 noon

	Advance	Decline
BSE	793	1011
NSE	503	454

Moving Average (hourly)			
20(S)	3656	100 (S)	3938
40(E)	3739	200 (S)	4037

S: Simple Moving Average

E: Exponential Moving Average



Short Term Trend

	Target	Trend	Reversal	Support/Resistance
Sensex	12300	↓	Up above 13740	12500 / 12850
Nifty	3560	↓	Up above 3965	3600 / 3700

Medium Term Trend

	Target	Trend	Reversal	Support/Resistance
Sensex	11800	↓	Up above 14000	11800 / 13000
Nifty	3400	↓	Up above 4070	3400 / 3700

Icon guide

 Up	 Down	 Downswing matures	 Upswing matures
--	--	---	---

Smart Charts > Open Short Calls

Date	Recommendation	Stop Loss/ Reversal (Intra-day)	Stop Loss/ Reversal (Closing)	Sell Price	Closing Price	Potential % P/L at CMP	Targets
28-02-07	ABB	-	3,902.0	3,638.0	3,359.2	8%	2,976
28-02-07	Aban Offshore	-	1,931.6	1,805.0	1,811.5	0%	1,532
29-01-07	Dr Reddy's	-	702.6	755.0	620.8	22%	600

[Home](#)

Disclaimer

"This document has been prepared by Sharekhan Ltd. This Document is subject to changes without prior notice and is intended only for the person or entity to which it is addressed to and may contain confidential and/or privileged material and is not for any type of circulation. Any review, retransmission, or any other use is prohibited. Kindly note that this document does not constitute an offer or solicitation for the purchase or sale of any financial instrument or as an official confirmation of any transaction.

Though disseminated to all the customers simultaneously, not all customers may receive this report at the same time. SHAREKHAN will not treat recipients as customers by virtue of their receiving this report. The information contained herein is from publicly available data or other sources believed to be reliable. While we would endeavour to update the information herein on reasonable basis, SHAREKHAN, its subsidiaries and associated companies, their directors and employees ("SHAREKHAN and affiliates") are under no obligation to update or keep the information current. Also, there may be regulatory, compliance, or other reasons that may prevent SHAREKHAN and affiliates from doing so. We do not represent that information contained herein is accurate or complete and it should not be relied upon as such. This document is prepared for assistance only and is not intended to be and must not alone be taken as the basis for an investment decision. The user assumes the entire risk of any use made of this information. Each recipient of this document should make such investigations as it deems necessary to arrive at an independent evaluation of an investment in the securities of companies referred to in this document (including the merits and risks involved), and should consult its own advisors to determine the merits and risks of such an investment. The investment discussed or views expressed may not be suitable for all investors. We do not undertake to advise you as to any change of our views. Affiliates of Sharekhan may have issued other reports that are inconsistent with and reach different conclusion from the information presented in this report.

This report is not directed or intended for distribution to, or use by, any person or entity who is a citizen or resident of or located in any locality, state, country or other jurisdiction, where such distribution, publication, availability or use would be contrary to law, regulation or which would subject SHAREKHAN and affiliates to any registration or licensing requirement within such jurisdiction. The securities described herein may or may not be eligible for sale in all jurisdictions or to certain category of investors. Persons in whose possession this document may come are required to inform themselves of and to observe such restriction.

SHAREKHAN & affiliates may have used the information set forth herein before publication and may have positions in, may from time to time purchase or sell or may be materially interested in any of the securities mentioned or related securities. SHAREKHAN may from time to time solicit from, or perform investment banking, or other services for, any company mentioned herein. Without limiting any of the foregoing, in no event shall SHAREKHAN, any of its affiliates or any third party involved in, or related to, computing or compiling the information have any liability for any damages of any kind. Any comments or statements made herein are those of the analyst and do not necessarily reflect those of SHAREKHAN."