

## Sensex surges on strong global cues

The Sensex opened above the 15,700 mark, with a positive gap of 74.62 points at 15,763.09, after strong economic data from the US suggested that the world's biggest economy is emerging from the longest recession since the 1930s. The index traded in a narrow range amidst a bout of volatility in the morning deals, ahead of the expiry of the August F&O series. The measure lost its momentum in the early afternoon trades for a while, owing to latest reports that showed a slowdown in the Infrastructure sector output. However, the gauge recovered from its day's low of 15,695.94 and moved upward to soon cross the 15,800 mark. The measure subsequently touched the intraday high of 15,831.49 boosted by strong buying in the IT, Realty, and Pharma stocks. The Sensex ended the day with a gain of 81.38 points, or 0.52%, at 15,769.85.

The Nifty closed the day amidst choppy trade at 4,680.85, adding 21.5 points, or 0.46%.

### Positive market breadth

Market breadth was strong with an advance-decline ratio of 2.28:1 on the BSE. Of the 2,867 stocks traded, 1,943 stocks advanced, 851 stocks declined, and 73 stocks remained unchanged.

### IT surges, FMCG falls

IT led the gainers' list on the BSE after it surged 3.35% due to strong US economic data. Realty advanced 2.5% on bargain-hunting, Pharma rose 0.8%, while Power and Oil & Gas gained around 0.62% each. Among other gainers, Metal, Capital Goods, and Auto edged up 0.4%, 0.36%, and 0.06%, respectively. On the other hand, FMCG dropped 1.01% on concerns that the deficient monsoon rains may crimp rural sales. The Consumer Durable and Banking sectors fell 0.45% and 0.16%, respectively.

### US markets end mixed, European markets decline

- The US stocks were mixed on Wednesday as investors were cautious about making big bets after a rally this week, overshadowing solid data on durable goods and home sales.
- European shares fell shrugging off better-than-expected German economic data, with oil and gas stocks leading the losers.

Index	Latest	1D Chg	YTD
Sensex (26-Aug-09)	15,769.85	0.52%	4.41%
Nifty (26-Aug-09)	4,680.85	0.46%	2.05%
Nasdaq (26-Aug-09)	1,637.00	(0.18)%	35.11%
DJIA (26-Aug-09)	9,543.52	0.04%	8.74%
S&P 500 (26-Aug-09)	1,028.12	0.01%	13.82%
FTSE (26-Aug-09)	4,890.58	(0.53)%	10.29%
CAC 40 (26-Aug-09)	3,668.34	(0.33)%	14.00%
Nikkei 225 (26-Aug-09)	10,639.71	1.36%	20.09%
Hang Seng (26-Aug-09)	20,456.32	0.10%	42.18%

SENSEX		
Top Gainers	Close	1DGain
Infosys	2,181.35	4.07%
Sterlite Industries	680.60	3.92%
TCS	548.30	3.75%
Wipro	557.25	2.34%
Rel Comm	267.45	1.98%

Top Losers	Close	1D Loss
HUL	262.75	(2.29)%
HDFC Bank	1,459.85	(1.79)%
Hero Honda	1,497.35	(1.19)%
Grasim Industries	2,640.00	(0.98)%
Maruti Suzuki	1,405.00	(0.94)%

NIFTY		
Top Gainers	Close	1DGain
Infosys	2,179.65	4.04%
Sterlite Industries	679.75	3.95%
TCS	548.50	3.82%
Wipro	557.00	2.44%
Tata Comm	519.70	2.30%

Top Losers	Close	1D Loss
Jindal Steel	3,175.10	(2.79)%
Ranbaxy	335.35	(2.43)%
HUL	263.10	(2.37)%
HDFC Bank	1,460.60	(1.77)%
HCL	301.80	(1.76)%

Market Stats	BSE	NSE
Advance-Decline ratio	2.28	3.13
Volume (in'000)	631,500	1,062,932

### SENSEX



### NIFTY



## Corporate Announcements:



- **Hindustan Petroleum Corporation** is planning to invest Rs. 69 bn to upgrade its diesel quality to Euro III and IV. (BS)
- **Infosys Technologies** has bagged a five-year outsourcing and support agreement from BP, one of the world's major oil and gas companies. (BS)
- **Cairn India** and its partner **ONGC**, which will this weekend start oil production from their prolific Rajasthan fields, will invest USD 1.5-1.8 bn more in the desert block over the next two years. (BS)

## Economic and Political Headlines:

- Growth of six core infrastructure industries eased to 1.8% in July, the lowest this fiscal, as petroleum refinery output acted as a drag on the sector. A 14.4% contraction in petroleum refinery products constricted expansion of the six key industries in July, against 5.1% a year ago. The core sector, which comprises petroleum refinery, crude oil, coal, electricity, cement and finished steel had grown by 6.8% in June. Crude oil, though at lower rates, dipped by 0.4% in July against minus 3% a year ago. However, coal expanded by 9.7% against 5.5%, electricity by 3.3% as compared to 4.5%, cement by 10.6% as against 5.5%, and finished steel by 1.2% as against 6%. (BS)
- Inflation rose to -0.95% for the week ended August 15 from -1.53% in the previous week on the back of rising food prices. It was 12.82% for the corresponding week last year. Prices of inland fish shot up by 25% over the previous week, eggs became dearer by 10%, masur dal was costly by 8%, milk price went up by 5%, and fruits and vegetables became expensive by 3%. The index of manufactured products rose by 0.1% led by manufactured food products that rose by 0.7%. (BS)

## International News Headlines:

- Purchases of new homes in the US jumped 9.6% in July, more than forecast and demand for long-lasting goods such as autos and computers climbed, reinforcing signs the economy is rebounding from the worst recession since the 1930s. (Bloomberg)

### Most Active Stocks by Value (in Cr)

BSE	Close	%Chg	Value	Volume
Aban Offshore	1,536.35	26.92%	570	3,861,877
RNRL	89.20	9.45%	255	29,464,324
Satyam	110.30	2.18%	178	16,142,241
Educomp Solution	4,286.35	3.62%	134	312,356
RIL	2,039.60	0.78%	133	652,638

NSE	Close	%Chg	Value	Volume
Aban Offshore	1,538.70	27.16%	1,718	11,639,965
RNRL	89.25	9.51%	540	62,229,445
RIL	2,040.15	0.72%	511	2,513,686
Suzlon	93.60	1.63%	424	45,169,487
DLF	399.20	1.53%	416	10,327,096

### Most Active Calls by Contract Value (in Cr)

	Value	Price	% Chg
Nifty 4700 Call Aug-09	6,191	24.20	(10.87)%
Nifty 4600 Call Aug-09	3,384	86.80	6.31%

### Most Active Puts by Contract Value (in Cr)

Nifty 4600 Put Aug-09	4,699	9.30	(59.30)%
Nifty 4700 Put Aug-09	4,076	40.60	(34.67)%

### Most Active Future Contracts by Value (in Cr)

Nifty Aug-09	10,763	4,680.85	0.43%
Nifty Sep-09	4,264	4,689.50	0.43%

### Top Contracts by Change in Open Interest

Contract	Change in OI	Price	% Chg
IFCI Sep-09	16,390,400	51.20	(1.25)%
ISPAT IND Sep-09	13,371,300	22.75	1.79%

### FII open positions in Derivatives (NSE)

	Idx Fut	Ind Opt	Stk Fut	Stk Opt
No of Contracts	725,288	1,281,564	926,878	65,896
Amt (in cr.)	16,401	29,899	29,671	2,107

FII (Rs. Cr.)*	26-Aug-09	MTD	YTD
Equity inflows	2,290	38,100	352,907
Equity outflows	1,911	42,109	347,609
Net	379	(4,009)	5,298

DII (Rs. Cr.)*	26-Aug-09	MTD	YTD
Equity inflows	1,613	24,138	190,838
Equity outflows	1,484	19,206	167,874
Net	129	4,931	22,964

\* FII & DII data is provisional in nature

Commodities	Latest	1DChg
Brent (USD/bbl) (Aug 26, 2009)	70.73	(3.19)%
Gold (USD/oz) (Aug 26, 2009)	940.50	(1.05)%
Cu (USD/lb) (Aug 26, 2009)	2.86	0.05%

X-rate	26-Aug-09	1DChg	1MChg
USD/Rs.	48.8	0.08%	0.93%
GBP/Rs.	79.8	(0.30)%	(0.24)%
EUR/Rs.	69.9	0.20%	1.81%
JPY/Rs.	51.9	(0.10)%	1.53%

ADR/GDR (USD)	26-Aug-09	1DChg
Dr Reddy's	16.73	1.89%
HDFC Bank	98.14	(1.10)%
ICICI Bank	31.39	(0.06)%
Infosys	44.21	2.62%
Wipro	16.10	2.16%
Tata Communications	21.24	1.58%
Tata Motors	12.10	1.00%
MTNL	3.95	0.51%
Patni	18.37	(0.27)%
Sterlite	13.87	5.08%

### Macro Economic Indicators

GDP Growth*	6.70%
Inflation (week ended Aug 15, 2009)	(0.95)%
Index of Industrial Production (IIP) growth (June)	7.80%
CRR (Aug 26, 2009)	5.00%
SLR (Aug 26, 2009)	24.00%

\* As per CSO Estimate for 2008-09

## BSE Bulk Deals

COMPANY	CLIENT	TRAN	QTY	TRADED PRICE
AFTEK LTD	HITESH SHASHIKANT JHAVERI	SELL	652,272	20.33
ALPHAGEO IND	JMP SECURITIES PVT LTD	BUY	58,471	252.94
AMD INDUS	SREYASH KUMAR MAHESHBHAI PATEL	BUY	162,726	27.83
DECCAN CHR*	RELIANCE MUTUAL FUND A/C	BUY	1,355,000	105.00
DHANUSTECH	DRB SECURITIES PVT LTD	SELL	106,963	43.45
GENUS COMM T	RAMLALI TIWARI	SELL	85,000	1.18
GONTERM PEIP	ASHARI AGENCIES LTD	BUY	126,000	24.25
GONTERM PEIP	DELHI IRON & STEEL P.LTD.	SELL	120,000	24.25
GSS AMERICA	CHANDRA PRAKASH KHANDELWAL HUF	BUY	90,000	224.52
KAMAN HSG	NISHA SUMAN JAIN	BUY	107,951	35.76
MAYTAS INFRA	SICOM LTD	SELL	300,000	98.15
NETLINK SOLU	ADITYA FINCAP PVT LTD	SELL	8,280,000	1.58
NETLINK SOLU	ANGEL INFIN PRIVATE LIMITED	BUY	210,000	1.70
NETLINK SOLU	MINESH VASANTILAL MODI	BUY	4,280,000	1.58
NETLINK SOLU	MOTILAL LAXKAR	SELL	350,227	1.70
NETLINK SOLU	RUPA MINESH MODI	BUY	4,000,000	1.58
RDB INDUST L	SAINATH HERBAL CARE MARKETING P.LTD	SELL	80,501	113.17
RIIL	JMP SECURITIES PVT LTD	BUY	135,599	1,053.37
RIIL	JMP SECURITIES PVT LTD	SELL	121,684	1,052.24
RISHABHDEV	SHELENDRA N BARADIA	SELL	85,000	16.56
SAARC NET	DIGVIJAY DHABRIYA	BUY	330,000	1.85
SAARC NET	GOVIND SHARDA	SELL	324,000	1.85
SABOO SOD CH	GIRDHAR GOPAL SABOO	BUY	71,782	9.44
SEL MANUF	ARPIT SHARE BROKERS PRIVATE LIMITED	BUY	200,086	74.21
SEL MANUF	MASTER TRUST LTD	SELL	350,000	74.09
SILVERLINE T	KSHITIJ PORTFOLIO P LTD	BUY	400,000	7.22
UNIMER INDIA	ANURAG GUPTA HUF	BUY	100,000	9.00
UNIMER INDIA	EXPLICIT FINANCE LIMITED	BUY	155,936	9.00
UNIMER INDIA	IFCI LIMITED	SELL	758,372	9.00
UNIMER INDIA	PREMLATA JAGDISHCHANDER BANSAL	BUY	500,000	9.00
USHER AGRO	DYNAMIC STOCK BROKING INDIA PVT LTD	BUY	176,375	39.89
USHER AGRO	DYNAMIC STOCK BROKING INDIA PVT LTD	SELL	158,375	40.08
VALIANT COMM	SHIV LAL GANDHI	SELL	69,700	33.10
ZEN TECH*	VY PRASAD	SELL	91,780	220.32

Note: Bulk Deals over and above 50,000 shares are only considered

## NSE Bulk Deals

COMPANY	CLIENT	TRAN	QTY	TRADED PRICE
AMDIND	PATEL.SREYASHKUMAR.MAHESHBHAI	BUY	157,560	27.33
DCHL	RELIANCE MUTUAL FUND A/C	BUY	1,945,000	105.00
EVERONN	DEUTSCHE SECURITIES MAURITIUS LIMITED	SELL	130,000	401.39
FCSSOFT	AANGI SHARE & SERVICE P LTD	BUY	92,500	74.89
FCSSOFT	VAJA ATULBHAI GORDHANBHAI	SELL	93,669	74.89
FSL	ADROIT FINANCIAL SERVICES PRIVATE LIMITED	BUY	2,782,592	36.17
FSL	ADROIT FINANCIAL SERVICES PRIVATE LIMITED	SELL	2,868,092	36.09
FSL	PRAKASH K SHAH SHARES & SECURITIES PVT. LTD	BUY	2,000,847	36.06
FSL	PRAKASH K SHAH SHARES & SECURITIES PVT. LTD	SELL	2,149,071	36.04
GMRFER	PRIME INDIA INVESTMENT FUND LTD	SELL	141,927	27.71
GMRFER	SATABDI INVESTMENT PVT LTD	SELL	75,000	27.49
MAYTASINFR	SICOM LTD	SELL	700,000	98.30
MCDOWELL-N	GOLDMAN SACHS INVESTMENTS MAURITIUS I LTD	SELL	745,394	913.33
MINDTREE	CAPITAL INTERNATIONAL GLOBAL EMERGING MKTS PVT EQUITY FUND	SELL	605,000	525.15
MLL	GLOBE CAPITAL MARKET LIMITED	BUY	1,918,166	59.89
MLL	GLOBE CAPITAL MARKET LIMITED	SELL	306,264	60.49
ORCHIDCHEM	GLOBE CAPITAL MARKET LIMITED	BUY	580,025	120.01
ORCHIDCHEM	GLOBE CAPITAL MARKET LIMITED	SELL	293,843	120.03
PVP	HARISH CHANDRA PRASAD	SELL	2,130,000	44.68
RIIL	JMP SECURITIES PVT LTD	BUY	141,960	1,053.41
RIIL	JMP SECURITIES PVT LTD	SELL	127,657	1,051.98
SELMCL	DKG SECURITIES PVT. LTD.	BUY	103,737	73.85
SELMCL	KANUDIA CAPITAL & MANAGEMENT SERVICES PVT. LTD.	BUY	200,000	74.05
SELMCL	MASTER TRUST LTD	SELL	350,000	73.91

Note: Bulk Deals over and above 50,000 shares are only considered

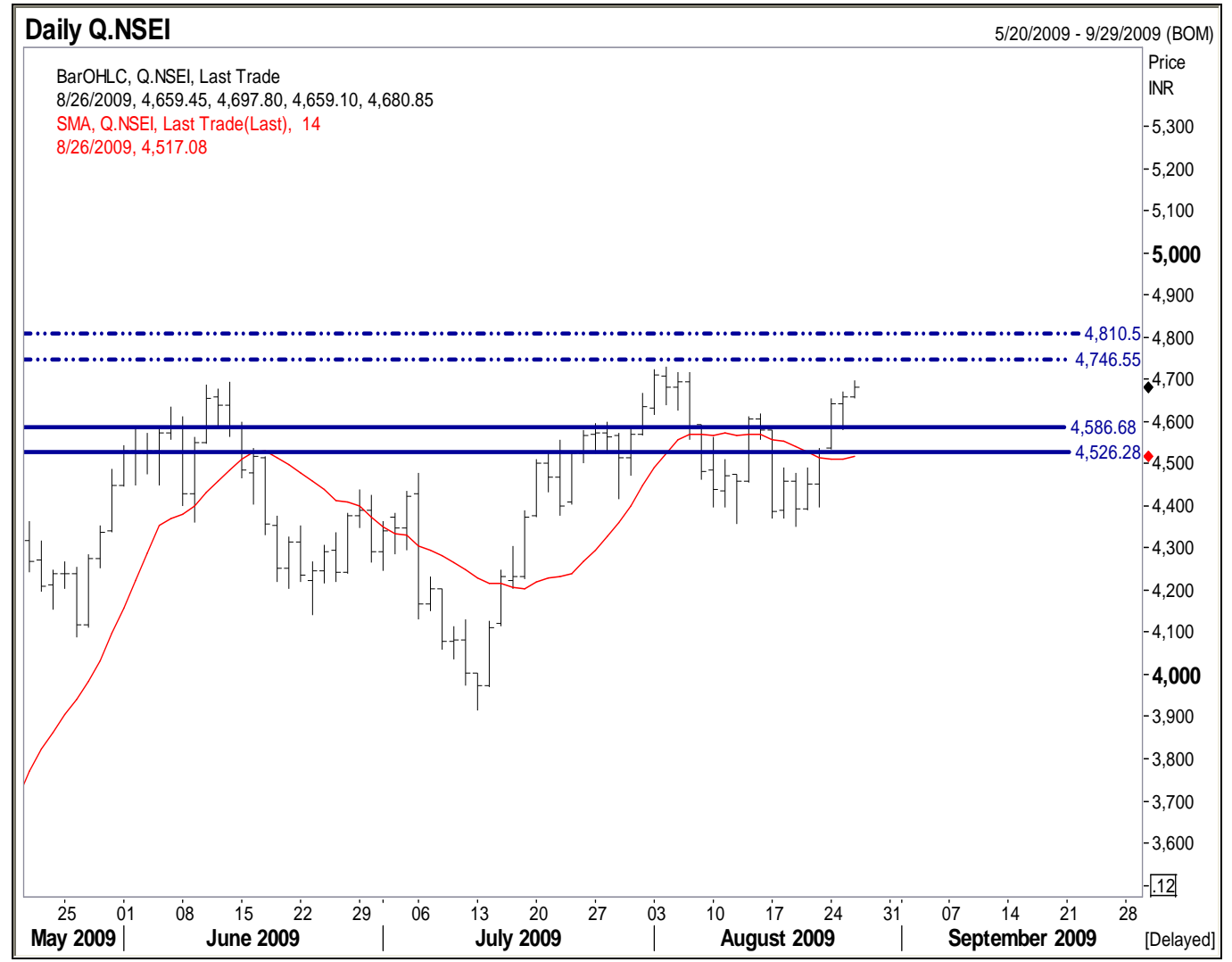
# MORNING BRIEF *India*

Daily Market Update

August 27, 2009

## Technical Analysis

**NIFTY: 4,680.85**



# MORNING BRIEF *India*

Daily Market Update

August 27, 2009

Name	LTP	Support 1	Support 2	Resistance 1	Resistance 2
NIFTY	4,680.85	4,586.68	4,526.28	4,746.55	4,810.50
ABAN Offshore Ltd	1,538.70	1,393.45	1,315.35	1,640.60	1,725.60
ABB Ltd India	733.80	700.90	691.30	746.50	760.40
ACC Limited	799.85	777.90	756.95	835.50	850.20
Aditya Birla Nuvo	965.65	948.75	938.05	985.65	1,003.30
Ambuja Cements	98.55	95.85	94.40	102.05	104.85
Asian Paints Ltd	1,370.75	1,326.05	1,295.55	1,410.70	1,452.05
Axis Bank	933.20	904.10	888.50	957.55	975.35
Bajaj Auto Ltd	1,146.60	1,077.30	1,047.30	1,188.70	1,215.15
Bank Of Baroda	426.30	417.25	409.84	435.00	440.20
BF Utilities Ltd	917.15	880.80	860.85	943.65	960.40
Bharat Electronics	1,421.15	1,408.90	1,385.10	1,458.05	1,472.30
Bharat Forge Co	221.65	213.95	208.90	234.25	240.05
Bharat Heavy Electricals	2,298.60	2,265.95	2,239.05	2,338.20	2,371.25
Bharat Petroleum	501.15	493.85	482.30	518.50	525.40
Bharti Airtel Ltd	405.40	400.65	395.75	415.30	420.45
Bosch Ltd	3,990.00	3,927.60	3,855.85	4,075.55	4,145.30
Cairn India	257.05	247.10	240.85	267.65	272.05
Canara Bank	262.10	254.75	251.25	270.65	272.70
Cipla Ltd	261.50	250.80	246.50	268.65	275.05
Container Corporation	1,202.40	1,189.25	1,162.35	1,247.25	1,260.80
Crompton Greaves	311.05	302.15	287.15	320.05	338.60
Dabur India Ltd	126.05	121.40	119.15	129.95	132.45
DLF Ltd	399.20	386.95	374.50	413.05	422.10
Dr Reddy's Labs	825.80	805.20	792.40	837.45	850.30
Essar Oil Ltd	143.20	138.20	134.95	146.75	150.05
Financial Technologies	1,527.55	1,465.45	1,420.60	1,585.55	1,635.85
Gail India Ltd	330.60	322.45	318.45	338.45	342.65
Glaxosmithkline	1,412.35	1,378.45	1,357.65	1,437.80	1,460.60
Glenmark Pharma	218.30	211.35	204.05	222.45	226.35
GMR Infrastructure	142.90	136.55	133.25	148.15	151.90
Grasim Inds Ltd	2,663.15	2,620.60	2,565.55	2,710.75	2,745.05
HCL Technologies Ltd	301.80	290.00	280.45	320.65	328.10
HDFC	2,514.70	2,467.00	2,433.55	2,551.70	2,598.60
HDFC Bank Ltd	1,460.60	1,433.10	1,407.80	1,500.55	1,523.75
Hero Honda Motors	1,498.95	1,470.00	1,447.85	1,533.30	1,561.75
Hindalco	107.05	105.25	103.20	110.70	113.35
Hindustan Lever	263.10	258.79	255.10	275.15	280.15
Hindustan Zinc	746.00	726.05	711.70	770.95	783.55
HPCL	348.00	336.95	330.65	355.60	363.90
ICICI Bank Ltd	761.90	740.45	724.30	785.05	804.05
Idea Cellular	80.40	78.45	76.05	84.55	85.25
Indian Hotels Co	65.75	62.85	61.35	68.90	70.40
Indian Oil Corporation	570.90	555.45	547.00	588.65	602.45
Indian Overseas Bank	81.05	78.05	76.65	82.30	83.45
Industrial Dev Bk Ind	97.80	92.25	90.15	100.20	102.14
Infosys Technologies Ltd	2,179.65	2,120.20	2,080.30	2,220.95	2,241.65
Infrastructure Development	131.20	122.45	118.65	138.45	142.65
ITC Ltd	239.00	234.75	230.85	245.75	249.25
Jaiprakash Associates	221.70	215.25	204.75	228.80	235.15

# MORNING BRIEF *India*

Daily Market Update

August 27, 2009

Name	LTP	Support 1	Support 2	Resistance 1	Resistance 2
Jet Airways India	254.85	246.90	239.55	263.85	271.20
Jindal Steel & Power	3,175.10	3,060.60	2,995.10	3,255.05	3,305.75
JSW Steel Ltd	723.80	706.25	700.55	739.35	750.05
Kotak Mahindra Bank	727.20	715.70	705.70	748.60	764.30
Larsen & Toubro	1,575.45	1,533.95	1,485.20	1,615.15	1,655.75
MMTC Ltd	29,002.15	27,065.10	26,440.10	29,852.45	31,525.65
MTNL	95.30	91.45	89.65	97.85	99.65
Mahindra & Mahindra	813.20	771.60	755.65	830.60	855.00
Mangalore Refineries	84.45	80.45	78.60	85.90	86.95
Maruti Udyog Ltd	1,405.25	1,373.10	1,340.65	1,450.87	1,480.30
Mundra Port and SEZ Ltd	552.95	541.55	532.10	565.75	573.10
National Aluminum Co	338.70	321.50	314.00	345.65	352.05
Natl Mineral Development	367.60	357.95	350.20	378.20	388.30
Nestle India Ltd	2,199.45	2,178.05	2,156.20	2,250.15	2,271.40
Neyveli Lignite	130.45	125.65	122.05	135.45	139.40
NTPC Limited	210.50	204.10	201.45	218.65	222.05
Oil & Natural Gas Corp	1,174.10	1,158.65	1,148.60	1,205.95	1,215.20
Oracle Financial Services	1,802.60	1,726.90	1,688.35	1,870.20	1,900.00
Patni Computers	453.05	423.77	407.80	468.85	486.25
Power Finance Corporation	230.35	223.35	220.10	237.85	241.10
Power Grid Corporation	109.45	103.25	100.05	112.35	117.65
Punjab Natl Bank	671.05	663.45	651.35	685.40	697.50
Ranbaxy Labs Ltd	335.35	324.50	315.75	357.54	368.25
Reliance Capital	834.80	800.80	783.85	855.55	875.45
Reliance Communication	267.55	256.15	249.75	272.25	279.35
Reliance Infrastructure	1,147.00	1,110.55	1,088.10	1,162.10	1,190.70
Reliance Industries	2,040.15	2,003.95	1,980.35	2,067.95	2,092.60
Reliance Petroleum	125.60	118.45	115.05	128.55	132.05
Sesa Goa Ltd	221.00	210.60	202.45	228.05	236.60
Siemens India	486.40	465.25	449.85	502.85	515.80
Sobha Developers	241.90	230.65	222.70	254.40	263.45
State Bank of India	1,739.70	1,715.30	1,696.52	1,768.65	1,785.45
Steel Authority of India Ltd	162.35	159.85	155.65	165.45	168.65
Sterlite Industries	679.75	652.60	632.25	701.45	725.85
Sun Pharmaceutical	1,206.20	1,176.35	1,154.35	1,240.95	1,257.10
Sun TV Network	275.20	267.55	263.85	283.00	285.95
Suzlon Energy Ltd	93.60	87.70	83.65	96.20	98.40
Tata Communications	519.70	507.15	500.50	530.05	540.20
Tata Consultancy	548.50	535.50	526.95	562.10	575.40
Tata Motors Ltd	499.70	475.35	461.25	507.90	520.40
Tata Power Co	1,336.25	1,307.15	1,284.95	1,360.50	1,378.30
Tata Steel Limit	460.20	452.00	445.15	468.35	477.80
Tech Mahindra Ltd	921.25	871.55	852.35	951.95	971.05
Union Bank of India	212.40	200.50	195.05	220.42	225.45
Unitech Limited	91.60	88.15	85.80	94.20	97.00
United Breweries	167.05	159.00	156.05	172.65	178.65
United Spirits	911.70	901.65	888.65	938.55	951.20
Videocon Industries	224.20	218.45	212.45	235.65	240.65
Wipro Limited	557.00	540.95	530.50	573.50	586.50
Zee Entertainment	218.15	205.65	198.45	228.65	232.00

**Disclaimer:**

This report is not for public distribution and is only for private circulation and use. The Report should not be reproduced or redistributed to any other person or person(s) in any form. No action is solicited on the basis of the contents of this report.

This material is for the general information of the authorized recipient, and we are not soliciting any action based upon it. This report is not to be considered as an offer to sell or the solicitation of an offer to buy any stock or derivative in any jurisdiction where such an offer or solicitation would be illegal. It is for the general information of clients of Indiabulls Securities Limited. It does not constitute a personal recommendation or take into account the particular investment objectives, financial situations, or needs of individual clients. You are advised to independently evaluate the investments and strategies discussed herein and also seek the advice of your financial adviser.

Past performance is not a guide for future performance. The value of, and income from investments may vary because of changes in the macro and micro economic conditions. Past performance is not necessarily a guide to future performance.

This report is based upon information that we consider reliable, but we do not represent that it is accurate or complete, and it should not be relied upon as such. Any opinions expressed here in reflect judgments at this date and are subject to change without notice. Indiabulls Securities Limited (ISL) and any/all of its group companies or directors or employees reserves its right to suspend the publication of this Report and are not under any obligation to tell you when opinions or information in this report change. In addition, ISL has no obligation to continue to publish reports on all the stocks currently under its coverage or to notify you in the event it terminates its coverage. Neither Indiabulls Securities Limited nor any of its affiliates, associates, directors or employees shall in any way be responsible for any loss or damage that may arise to any person from any error in the information contained in this report.

The analyst for this report certifies that all of the views expressed in this report accurately reflect his or her personal views about the subject stock and no part of his or her compensation was, is or will be, directly or indirectly related to specific recommendations or views expressed in this report. No part of this material may be duplicated in any form and/or redistributed without Indiabulls Securities Limited prior written consent.

The information given herein should be treated as only factor, while making investment decision. The report does not provide individually tailor-made investment advice. Indiabulls Securities Limited recommends that investors independently evaluate particular investments and strategies, and encourages investors to seek the advice of a financial adviser. Indiabulls Securities Limited shall not be responsible for any transaction conducted based on the information given in this report, which is in violation of rules and regulations of National Stock Exchange or Bombay Stock Exchange.