

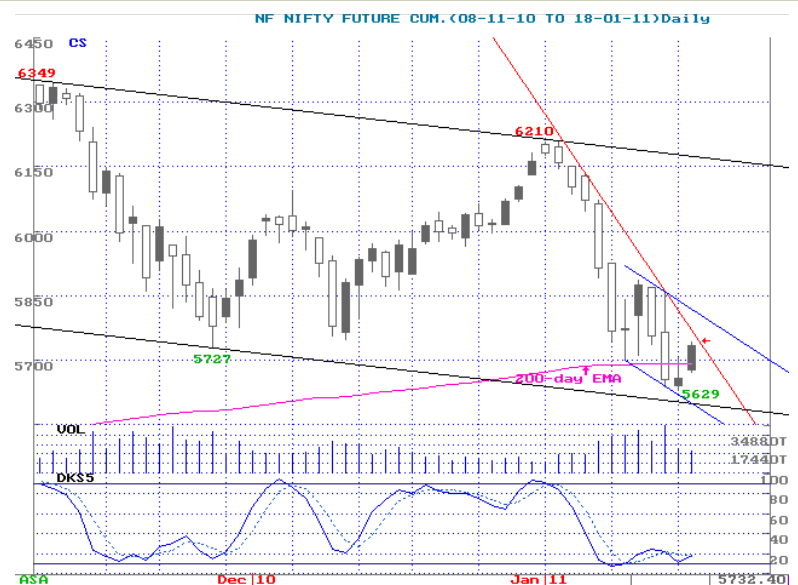
**Sensex:** We said, "Though a retest of 19000 cannot be ruled out... bears appear more powerful at this stage." The Sensex traded volatile in a smaller range, tested an upside of about 19000 but closed flat at the end. While the IT Index gained 1.7%, the Realty Index lost 2.3%. The Small-Cap Index shaved off 1.4% with the A/D ratio remaining negative 1:3.

The action formed a High Wave, a candle with a small body and shadows on both sides. It indicates volatile trading in a small range and also indecisiveness. Its high/low of 19019 and 18779 could provide clues today. Above 19019-50, expect some attempt towards the Red falling line. Below 18750-79, however, the weakness may continue.



**Nifty Futures (NIFTY)**

<b>CMP :</b>	5732.40
<b>Comment :</b>	Future premium up from 2 points to 8. Upsides testing the Red falling line at about 5750. Reverse if holds 5713-27 area.
<b>Action :</b>	Sell below 5742
<b>Targets :</b>	5732 / 5700 / lower
<b>Stop-loss :</b>	5744



### JINDAL SAW (SAWPIP)

<b>CMP</b>	223
<b>Comment:</b>	Higher bottom on daily chart and bullish crossover in stochastic oscillator
<b>Action:</b>	Buy above 224
<b>Targets:</b>	229.25/232/Higher
<b>Stop-loss:</b>	221.35



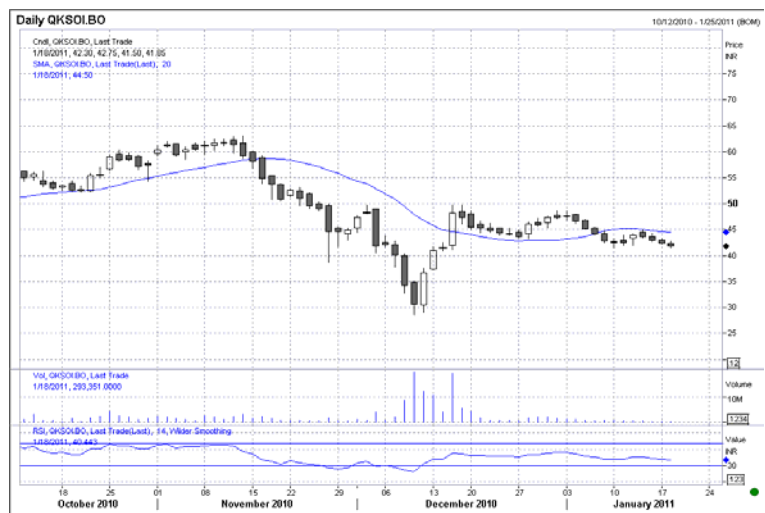
### YES BANK (YESBAN)

<b>CMP :</b>	258.05
<b>Comment:</b>	Bullish hammer candlestick on daily chart and positive divergence in 14 period RSI
<b>Action :</b>	Buy above 259.80
<b>Targets:</b>	265.80/268/Higher
<b>Stop-loss</b>	256.80



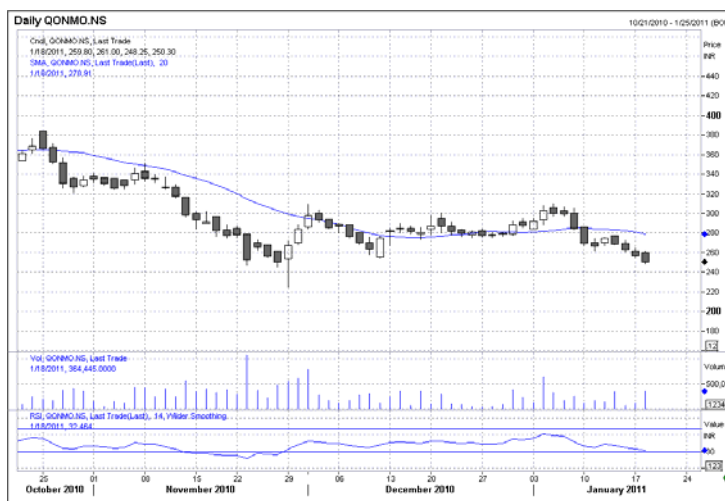
### KSOIL (KSOIL)

<b>CMP :</b>	42
<b>Comment:</b>	Lower top on daily chart and taking resistance at 5 day EMA
<b>Action :</b>	Sell below 41.80
<b>Targets:</b>	40.70/39.90/Lower
<b>Stop-loss</b>	42.35



### ON MOBILE GLOBAL (ONMGLO)

<b>CMP :</b>	251.65
<b>Comment:</b>	Price decline with volume and 14 period RSI in sell mode
<b>Action :</b>	Sell below 250
<b>Targets:</b>	244.80/242/Lower
<b>Stop-loss</b>	252.60



### Previous day's Performance Review

<u>Counter</u>	<u>Action</u>	<u>Targets</u>	<u>Comments</u>	<u>Return opportunity</u>
Nifty	Sell below 5705	5660/5628/-	Stoploss triggered	-2 points
Cipla	Buy above 348.50	356/360/+	Target 1 Achieved	2.15%
Crompton Greaves	Buy above 290	296.5/299/+	Gain:290 to 293.30	1.13%
Chambal Fertilizer	Sell below 74	71.8/70.6/-	Stoploss triggered	-1.48%
ONGC	Sell below 1166	1144/1134/-	Stoploss triggered	-0.99%

Nifty Points gained for the day: -2

Stock profits: Average 0.20 % per trade

Strike Rate for the day: 2/4

Cum. gains over last 203 days: 2644 points

Cum. Profits over last 203 days: 584.06 %

Cum. Strike Rate over 203 days: .417 /623 (67 %)

STOCK	CLOSE	S1	S2	S3	R1	R2	R3	TREND
SENSEX	19092.05	19070.40	19023.60	18976.80	19163.95	19236.65	19309.35	+ve
NIFTY	5724.05	5716.35	5701.50	5686.70	5745.95	5768.10	5790.20	+ve
ACC	1029.15	1026.30	1020.05	1013.80	1038.75	1044.65	1050.60	+ve
ANDHRA BANK	125.65	124.75	123.65	122.45	126.90	127.95	129.15	Neutral
ARVIND	59.95	59.50	58.90	57.85	60.75	61.40	62.40	Neutral
BAJAJ AUTO	1294.70	1290.85	1282.90	1274.95	1306.75	1319.85	1333.00	+ve
BALAJI TELE	36.45	36.45	36.25	36.05	36.80	37.20	37.65	+ve
BOB	812.90	796.10	788.90	781.70	817.45	828.15	838.85	-ve
BOI	437.75	437.85	434.90	431.90	443.80	451.85	459.85	+ve
BEL	1688.95	1678.65	1671.55	1664.50	1691.65	1698.15	1704.65	-ve
BPCL	589.40	586.40	583.55	575.20	592.10	594.95	603.35	Neutral
BHEL	2192.50	2192.75	2188.65	2184.55	2200.95	2208.65	2216.35	+ve
CANARA BANK	536.25	536.00	531.75	527.50	544.50	550.85	557.20	+ve
CENTURY TEXT.	358.65	356.80	353.85	348.90	362.75	365.75	370.65	Neutral
CIPLA	354.60	353.80	351.40	349.00	358.60	361.40	364.20	+ve
DR.REDDY'S LAB.	1671.65	1665.95	1651.75	1637.55	1694.40	1709.65	1724.90	+ve
GAIL	478.25	469.15	463.95	458.75	479.15	484.15	489.15	-ve
GEOMETRIC	75.60	74.45	73.50	72.60	75.85	76.55	77.30	-ve
GRASIM	2419.80	2397.85	2385.35	2372.85	2426.35	2440.60	2454.85	-ve
AMBUJA CEMENT	130.80	129.85	128.00	126.15	133.55	134.20	134.80	+ve
HCL TECH	488.75	488.00	483.75	479.50	496.50	501.00	505.55	+ve
HDFC BANK	2109.35	2100.00	2082.65	2065.35	2134.70	2145.55	2156.40	+ve
HDFC	658.35	649.25	641.85	634.45	658.70	663.45	668.20	-ve
HERO HONDA	1786.85	1773.40	1763.90	1751.40	1792.40	1801.90	1814.40	Neutral
HEXAWARE TECHNOL	121.25	121.10	120.30	119.45	122.75	123.65	124.50	+ve
HINDALCO	229.45	229.00	227.75	226.55	231.50	233.75	236.05	+ve
HINDUSTAN UNILEVER	301.85	301.05	299.95	298.60	303.20	304.25	305.65	Neutral
HPCL	358.35	355.75	353.05	349.05	361.15	363.80	367.85	Neutral
HINDUJA TMT	321.10	302.40	294.95	287.45	328.50	341.50	354.55	-ve
ICICI BANK	1011.45	1011.65	1005.65	999.70	1023.60	1030.30	1037.05	+ve
IDBI	143.75	143.40	142.60	141.80	144.95	146.95	148.95	+ve
I-FLEX SOLUTION	2276.30	2278.45	2259.80	2241.15	2315.75	2353.10	2390.50	+ve
IOC	314.00	309.50	306.55	303.60	313.85	316.05	318.20	-ve
INFOTECH ENT.	170.75	171.20	169.70	168.20	174.15	175.35	176.50	+ve
INFOSYS	3323.00	3312.95	3291.50	3270.10	3355.80	3378.40	3401.00	+ve
ITC	176.15	175.55	174.40	173.25	177.90	179.75	181.60	+ve
JINDAL SAW	223.45	222.65	220.70	218.75	226.60	229.15	231.75	+ve
KPIT CUMMINS	160.25	158.50	154.15	149.80	167.20	168.55	169.90	+ve
LARSEN & TOUBRO	1684.00	1675.00	1666.90	1648.75	1691.10	1699.15	1717.35	Neutral
LIC HOUSING	155.10	154.85	153.70	152.55	157.15	159.70	162.25	+ve

M & M	746.40	745.80	742.20	738.55	753.10	757.00	760.90	+ve
MARUTI SUZUKI	1277.60	1277.25	1273.00	1268.75	1285.75	1292.00	1298.25	+ve
MASTEK	167.80	157.90	155.55	153.20	167.90	172.85	177.85	-ve
MTNL	51.55	51.50	51.35	51.20	51.85	52.10	52.40	+ve
NALCO	380.65	377.25	375.80	374.35	380.60	382.30	383.95	-ve
NTPC	188.60	188.45	187.60	186.80	190.15	191.05	191.95	+ve
ONGC	1170.45	1164.25	1159.40	1152.20	1173.90	1178.75	1185.95	Neutral
OBC	348.05	346.20	343.55	341.20	351.45	354.05	356.40	Neutral
POLARIS	178.50	177.60	175.20	172.85	182.35	183.95	185.60	+ve
PNB	1147.00	1145.35	1138.40	1131.45	1159.25	1170.00	1180.70	+ve
RANBAXY	582.15	580.15	574.20	568.30	592.00	595.70	599.45	+ve
RELIANCE INFRA.	701.45	681.55	660.40	639.25	708.50	721.95	735.40	-ve
RELIANCE	994.85	991.75	987.25	983.25	1000.75	1005.25	1009.20	Neutral
ROLTA INDIA	143.90	143.80	143.05	142.25	145.40	146.35	147.30	+ve
SAIL	162.00	161.40	160.05	158.75	164.00	165.70	167.45	+ve
SATYAM	65.45	65.25	64.85	64.40	65.95	66.30	66.80	Neutral
SCI	117.25	116.60	115.85	114.35	118.10	118.80	120.30	Neutral
SBI	2554.55	2550.05	2539.55	2529.05	2571.05	2583.25	2595.45	+ve
SYNDICATE BANK	100.45	100.20	99.65	99.10	101.30	102.85	104.45	+ve
TATA CHEMICALS	379.10	377.25	375.25	371.55	381.30	383.35	387.00	Neutral
TATA MOTORS	1199.55	1198.15	1191.50	1184.85	1211.45	1220.35	1229.25	+ve
TATA POWER	1332.60	1299.75	1290.30	1280.90	1330.75	1346.25	1361.75	-ve
TATA TEA	104.75	104.35	103.65	102.25	105.70	106.35	107.75	Neutral
TCS	1202.55	1197.25	1186.10	1174.95	1219.50	1232.90	1246.25	+ve
TATA STEEL	632.60	632.70	629.75	626.80	638.60	642.65	646.65	+ve
UBI	315.25	315.35	313.70	312.05	318.60	320.35	322.10	+ve
TATA COMM.	250.65	252.25	249.50	246.80	257.70	259.40	261.10	+ve
WIPRO	478.55	478.25	475.05	471.85	484.65	489.85	495.10	+ve
ZEE	108.05	103.50	100.70	97.95	109.20	112.05	114.90	-ve

## NOTES :

- The Sell below / above price is a key technical level which decides the trend for the day
- Once the call is initiated, an appropriate Stop Loss trigger should be put for the trade
- Once into position, put trailing stops to preserve your profits
- Be careful if the counter achieves the target immediately after opening
- The strategies are valid only for the date mentioned at the top
- Positions should be squared off by the end of the day
- Only stocks in derivatives segment have been considered for daily trading
- Chart shows 50 days on NSE cash market, with 5/8/13/21 day EMAs, volumes & 5-day Slow Stochastics
- The vertical grids show weeks, horizontal grids are price-aligned
- The writer may have position in the stocks discussed
- The strategies are based on intra-day volatility, suggesting a two-way approach intra-day
- Medium to long-term prospects of a stock does not have any bearing on the daily view

**MOST IMP:** The follow-up and performance review table of the strategies indicates the profit opportunity that was available in the strategies. Individual profits may vary, depending upon the entry and exit price and stop losses.

---

**ICICIdirect.com Technical Desk**

**ICICI Securities Limited,**  
7th Floor, Akruiti Centre Point,  
MIDC Main Road, Marol Naka  
Andheri (East), Mumbai – 400 093

**research@icicidirect.com**

---

**DISCLAIMER:** The report and information contained herein is strictly confidential and meant solely for the selected recipient and may not be altered in any way, transmitted to, copied or distributed, in part or in whole, to any other person or to the media or reproduced in any form, without prior written consent of ICICI Securities Limited. "The author of the report does not hold any investment/open position in any of the companies mentioned in this report. ICICI Securities Services Ltd (I-Sec) may be holding a small number of shares/ an open position in the above referred companies as on the date of release of this report." This report is based on information obtained from public sources and sources believed to be reliable, but no independent verification has been made nor is its accuracy or completeness guaranteed. This report and information herein is solely for informational purpose and may not be used or considered as an offer document or solicitation of offer to buy or sell or subscribe for securities or other financial instruments. Nothing in this report constitutes investment, legal, accounting and tax advice or a representation that any investment or strategy is suitable or appropriate to your specific circumstances. The securities discussed and opinions expressed in this report may not be suitable for all investors, who must make their own investment decisions, based on their own investment objectives, financial positions and needs of specific recipient. This may not be taken in substitution for the exercise of independent judgement by any recipient. The recipient should independently evaluate the investment risks. ICICI Securities Ltd and affiliates accept no liabilities for any loss or damage of any kind arising out of the use of this report. Past performance is not necessarily a guide to future performance. Actual results may differ materially from those set forth in projections. ICICI Securities Ltd may have issued other reports that are inconsistent with and reach different conclusion from the information presented in this report. This report is not directed or intended for distribution to, or use by, any person or entity who is a citizen or resident of or located in any locality, state, country or other jurisdiction, where such distribution, publication, availability or use would be contrary to law, regulation or which would subject ICICI Securities Ltd and affiliates to any registration or licensing requirement within such jurisdiction. The securities described herein may or may not be eligible for sale in all jurisdictions or to certain category of investors. Persons in whose possession this document may come are required to inform themselves of and to observe such restriction.

## TECHNICAL PRODUCT BASKET

Research Product	Perspective	Frequency	Time frame	Avg. Returns objective	Location on ICICIdirect.com
<b>Pre-market open view</b>					
<a href="#"><u>Daily Technical</u></a>	Features three stocks with a trading outlook for the day based on short-term technical trends considering key technical indicators & statistical information.	Daily	1 Day	2 – 3 %	Home page-Trading recommendation, Research page-Technical recommendations
<a href="#"><u>Daily Derivative</u></a>	Trading strategy for a day in the futures & options segment based on news events, market trends, technical & other factors governing movements in stocks.	Daily	1 Day	2 - 3%	Home page-Trading recommendation, Research page-Technical recommendations, Trading Page - Scroller
<a href="#"><u>Momentum Pick</u></a>	Provide trading strategy for a day based on technical and derivative outlook.	Daily	1 Day	2- 3%	Internal Mailer
<a href="#"><u>Advanced Derivative Strategies</u></a>	Provides simplified Derivative strategies such as Spreads and Covered calls	Daily			iClick-2-Gain
<b>Intra-day Technical recommendations</b>					
<a href="#"><u>BTST Calls</u></a>	Based on short term technical trends and stock specific news/news expectations.	Daily	1 – 2 Days	1 - 2%	Trading Page - iCLICK-2-GAIN
<a href="#"><u>Margin Calls</u></a>					
<a href="#"><u>Derivative Calls</u></a>					
<b>Weekly recommendations</b>					
<a href="#"><u>Weekly Calls</u></a>	Features stocks with a trading outlook for a week based on short-term technical trends considering key technical indicators & statistical information.	Weekly	1-7 days	4 – 5%	Home Page & Research Page
<a href="#"><u>Weekly Technicals</u></a>	Features market outlook for the coming week with focus on one of the sector which may outperform broader markets.	Weekly	1-7 days	4 – 5%	Internal Mailer
<a href="#"><u>Weekly Derivatives</u></a>	Trading opportunities in futures & options segment based on derivatives data like, overall market trend, volatility & open interest positions of securities.	Weekly	1-7 days	4 – 5%	Home Page, Research Page & Trading page -Scroller
<b>Short -Medium term recommendations</b>					
<a href="#"><u>Stocks on move</u></a>	Covers stocks which are likely to show significant upward movement in the next 15 days due to change in trader sentiment.	Fortnightly – every alternate Wednesday	> 7-15 days	5 – 7%	Home page, Research page & Trading page - Scroller iCLICK-2-GAIN
<a href="#"><u>Monthly Technicals</u></a>	Trading outlook for a month based on medium-term technical trends considering key technical indicators & statistical information.	Monthly	30 days	10%	Home Page & Research Page
<a href="#"><u>Value Pick</u></a>	Short term trading recommendation based on technical set-up and favourable risk/reward.				iClick-2-Gain
<a href="#"><u>Rollover Analysis</u></a>	Features High Dividend Yielding Stocks for assured returns on investment				Internal Mailer