

Daily Calls

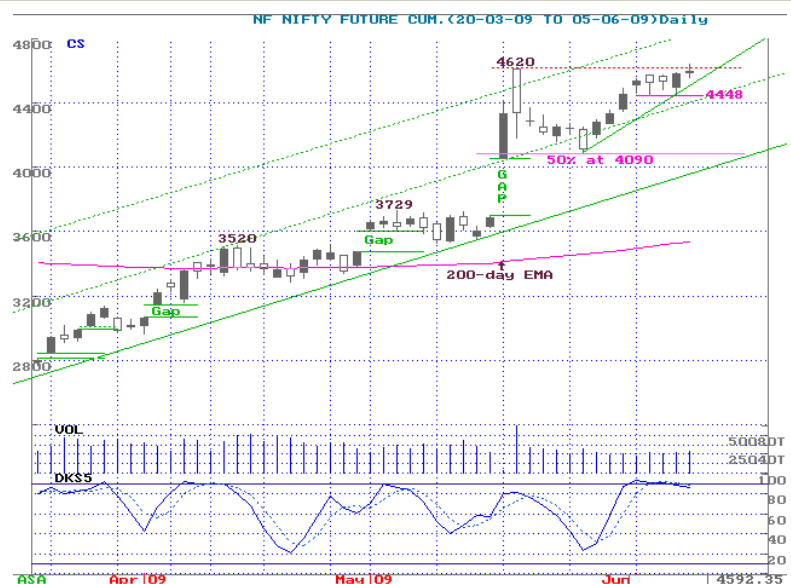
Sensex: We said, "Closing above previous high opens up possibility of further upsides ... Today we may watch if upside up to 15107 can be reached or sustained above." Opening the expected upsides, Index touched 15257, but failed to sustain. While Sensex finished only 0.6% higher, Small-Cap Index had lost 1% on -ve A/D ratio.

The action can be best described as "Shooting Star", which stands for a candle that failed in its attempt to shoot up. Such a candle has certain bearish undertones if we see a follow-up selling below its low, which was at 14993. It may, for the time being, open only limited downsides of 14900-931 or 14600. Positive if 14993 holds.



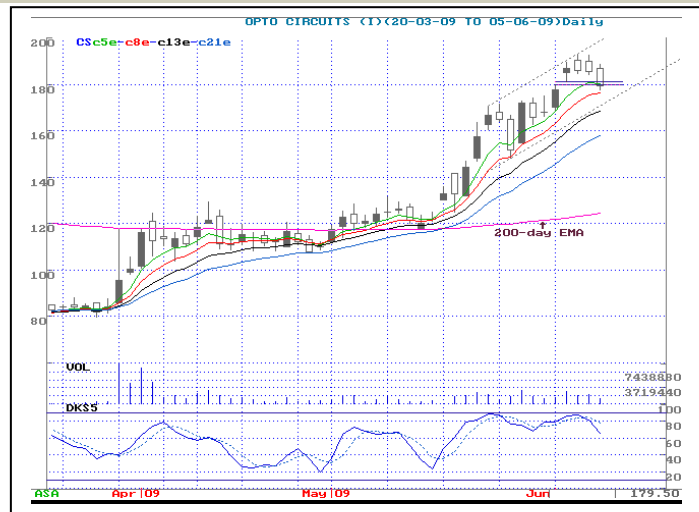
Nifty Futures (NIFTY)

CMP :	4592.35
Comment :	Future premium remains at 5 points. Testing previous high of 4620, forms a Doji-like pattern. Reverse if holds above 4560.
Action :	Sell below 4643
Targets :	4595 / 4560 / lower
Stop-loss :	4645



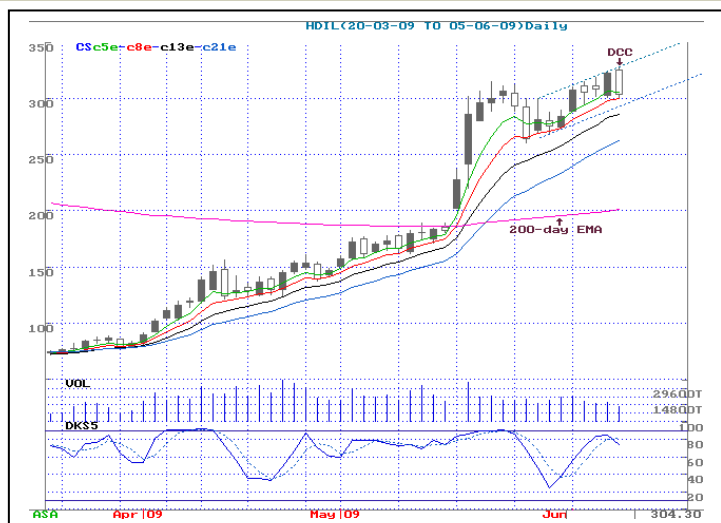
Opto Circuits (OPTCIR)

CMP:	179.50
Comment:	Closes below last Monday's gap-up area.
Action :	Sell below 182
Targets:	179 / 174 / lower
Stop-loss	183



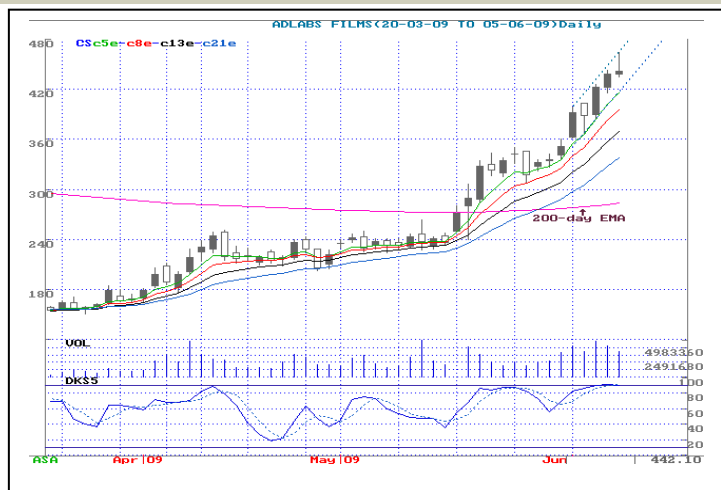
HDIL (HDIL)

CMP:	304.30
Comment:	Channeled rally appear slower than previous rally. Forms a bearish Dark Cloud Cover, sell on rallies.
Action :	Sell below 310.50
Targets:	301 / 297 / lower
Stop-loss	311.50



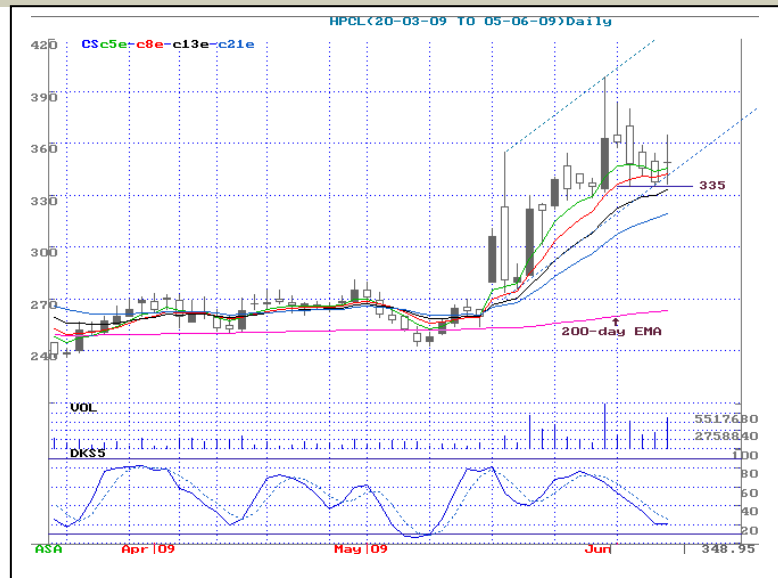
Adlab Films (ADLFIL)

CMP:	442.10
Comment:	Overbought at upper end of the channel, forms a bearish Inverted Hammer.
Action :	Sell below 439.50
Targets:	434 / 425 / Lower
Stop-loss	440.50



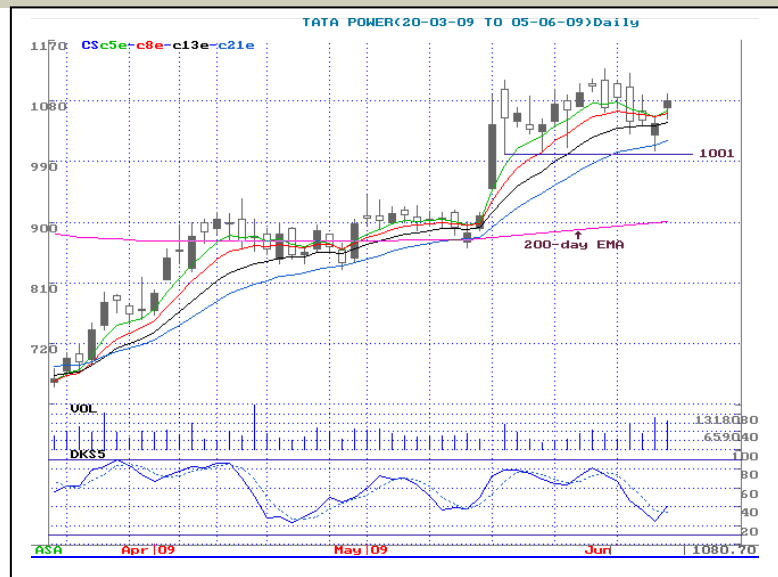
HPCL (HINPET)

CMP:	348.95
Comment:	Oversold at lower end of the rising channel.
Action :	Buy above 355
Targets:	357.50/ 370 / higher
Stop-loss	354



TATA Power (TATPOW)

CMP:	1080.70
Comment:	Holds 1001 for three weeks.
Action :	Buy above 1090
Targets:	1096 / 1110 / higher
Stop-loss	1088



Previous day's Performance Review

(05th June'2009)

Counter	Action	Targets	Comments	Return opportunity
Nifty	Sell below 4578	4550/ 4525/ -	Gained : 4576 to 4643	67 points
Essar Oil	Buy above 189	192 / 195 /+	No Trade	0.00%
Ranbaxy	Buy above 286	290 / 292 /+	Gained: 286 to 292	2.09%
HPCL	Sell below 337.50	333 / 331 /-	No Trade	0.00%
Sesa Goa	Sell below 166	164 / 162 /-	Lost: 166 to 156.30	5.84%

Nifty Points gained for the day: 67

Cum. gains over last 41 days: 3067 points

Stock profits: Average 0.81% per trade

Cum. Profits over last 41 days: 293.65%

Strike Rate for the day: 2/3

Cum. Strike Rate over 41 days: 97/118 (82.50%)

Performance: 2007-08

Nifty Points gained: 16627

Stock Profits: 783.2%

Strike Rate: 90%

Performance: 2008-09

Nifty Points gained: 14524

Stock Profits: 956.46%

Strike Rate: 88.25%

STOCK	CLOSE	S1	S2	S3	R1	R2	R3	TREND
SENSEX	15103.55	15110.85	15044.90	14979.00	15242.70	15349.35	15456.00	+ve
NIFTY	4586.90	4591.05	4572.35	4553.60	4628.50	4660.70	4692.90	+ve
ACC	859.80	859.05	847.80	836.55	881.55	890.65	899.80	+ve
ANDHRA BANK	92.55	92.70	91.80	90.90	94.55	95.55	96.55	+ve
ARVIND	34.05	33.05	32.45	31.85	34.30	34.90	35.50	-ve
BAJAJ HOLDING	445.50	431.50	419.00	406.50	447.90	456.05	464.25	-ve
BALAJI TELE	70.45	68.50	67.45	66.40	71.20	72.55	73.90	-ve
BOB	425.95	424.05	419.20	414.35	433.80	440.35	446.90	+ve
BOI	344.50	342.65	339.45	334.30	349.05	352.20	357.40	Neutral
BEL	1393.45	1390.65	1349.15	1307.65	1473.65	1501.25	1528.85	+ve
BPCL	472.20	471.00	463.90	456.80	485.20	489.45	493.70	+ve
BHEL	2287.50	2269.25	2234.00	2198.75	2339.75	2365.35	2390.95	+ve
CANARA BANK	282.30	283.70	280.60	277.55	289.90	293.50	297.10	+ve
CENTURY TEXT.	478.35	480.45	473.25	466.05	494.85	499.70	504.60	+ve
CIPLA	233.95	231.00	228.95	226.90	233.95	235.45	236.95	-ve
DR.REDDY'S LAB.	686.30	681.20	666.70	652.20	710.20	719.15	728.15	+ve
GAIL	306.45	307.35	304.50	301.60	313.05	314.50	315.90	+ve
GEOMETRIC	33.95	33.70	33.30	32.90	34.50	34.95	35.45	+ve
GRASIM	2513.35	2513.60	2421.55	2329.45	2697.75	2727.25	2756.75	+ve
AMBUJA CEMENT	102.95	101.90	100.50	99.40	104.75	106.15	107.25	Neutral
HCL TECH	174.95	174.95	173.50	172.00	177.90	179.25	180.60	+ve
HDFC BANK	1418.60	1415.10	1403.65	1392.15	1438.00	1449.95	1461.85	+ve
HDFC	2425.70	2432.85	2406.90	2380.95	2484.75	2514.50	2544.25	+ve
HERO HONDA	1453.95	1436.05	1402.20	1368.30	1503.80	1517.05	1530.30	+ve
HEXAWARE TECHNOL	52.05	52.35	51.30	50.25	54.40	55.10	55.80	+ve
HINDALCO	92.95	92.85	92.05	91.25	94.45	95.95	97.45	+ve
HINDUSTAN UNILEVER	252.00	252.00	249.10	246.25	257.75	261.35	265.00	+ve
HPCL	348.95	349.45	342.30	335.15	363.75	368.45	373.20	+ve
HINDUJA TMT	206.10	203.10	201.40	199.65	207.05	209.00	211.00	-ve

ICICI BANK	754.75	754.00	748.00	742.00	765.95	779.00	792.05	+ve
IDBI	99.30	100.50	98.10	95.65	105.30	108.35	111.35	+ve
I-FLEX SOLUTION	1197.10	1179.75	1169.95	1160.15	1199.75	1209.75	1219.75	-ve
IOC	593.95	591.60	578.15	564.65	618.55	625.80	633.05	+ve
INFOTECH ENT.	175.15	169.60	165.70	161.75	176.95	180.60	184.30	-ve
INFOSYS	1698.90	1690.95	1670.95	1650.95	1730.95	1744.30	1757.70	+ve
ITC	191.35	186.25	183.30	180.30	193.00	196.35	199.70	-ve
JINDAL SAW	437.90	427.35	419.85	412.40	440.80	447.50	454.25	-ve
KPIT CUMMINS	57.45	55.75	54.45	53.10	58.15	59.35	60.50	-ve
LARSEN & TOUBRO	1522.60	1517.20	1495.35	1473.50	1560.85	1586.65	1612.45	+ve
LIC HOUSING	540.95	542.60	537.15	531.70	553.50	561.60	569.70	+ve
M & M	709.90	709.10	700.35	691.65	726.55	735.00	743.50	+ve
MARUTI SUZUKI	1087.10	1088.55	1077.90	1067.20	1109.90	1123.55	1137.25	+ve
MASTEK	244.65	243.10	241.20	238.45	247.00	248.95	251.70	Neutral
MTNL	117.65	115.85	113.55	110.30	120.45	122.75	125.95	Neutral
NALCO	348.20	348.45	345.65	342.85	354.05	358.35	362.65	+ve
NTPC	219.60	217.05	214.95	212.85	220.30	221.95	223.55	-ve
ONGC	1181.80	1180.15	1171.70	1163.25	1197.05	1210.15	1223.25	+ve
OBC	187.10	187.85	186.30	184.80	190.95	192.50	194.10	+ve
POLARIS	101.55	101.40	99.45	97.50	105.25	107.40	109.50	+ve
PNB	654.25	645.05	634.60	624.20	655.90	661.30	666.75	-ve
RANBAXY	284.80	284.55	278.70	272.90	296.20	301.95	307.70	+ve
RELIANCE INFRA.	1226.75	1195.35	1177.10	1158.85	1235.40	1255.45	1275.50	-ve
RELIANCE	2212.75	2174.85	2147.60	2120.40	2220.35	2243.10	2265.85	-ve
ROLTA INDIA	140.70	136.70	133.95	131.15	142.00	144.65	147.30	-ve
SAIL	176.05	177.60	174.00	170.35	184.85	186.80	188.75	+ve
SATYAM	66.85	64.25	62.05	59.90	67.50	69.15	70.80	-ve
SCI	144.65	141.45	140.15	138.85	145.70	147.80	149.95	-ve
SBI	1817.65	1785.75	1772.20	1758.60	1829.75	1851.75	1873.75	-ve
SYNDICATE BANK	82.25	79.05	78.15	77.25	83.40	85.55	87.75	-ve
TATA CHEMICALS	236.00	231.40	227.00	222.65	237.30	240.25	243.25	-ve
TATA MOTORS	389.20	388.10	379.15	370.25	405.95	411.25	416.55	+ve
TATA POWER	1080.70	1077.70	1068.60	1059.45	1095.95	1110.70	1125.45	+ve
TATA TEA	793.90	772.65	762.70	752.80	795.10	806.30	817.55	-ve
TCS	721.35	718.40	710.30	702.25	734.60	740.25	745.90	+ve
TATA STEEL	463.90	455.60	449.25	442.90	466.20	471.55	476.85	-ve
UBI	214.95	210.15	208.15	206.15	215.65	218.40	221.10	-ve
TATA COMM.	512.20	500.50	485.55	470.60	514.45	521.45	528.45	-ve
WIPRO	393.45	389.90	386.25	383.40	397.15	400.75	403.65	Neutral
ZEE	192.25	190.05	187.80	185.05	194.55	196.85	199.55	Neutral

RESEARCH BASKET					
Research Product	Perspective	Frequency	Time frame	Avg. Returns objective	Location on ICICIdirect.com
Pre-market open view					
Opening Bell	Daily comprehensive snapshot containing information & in-depth analysis of Indian & US markets, major headlines, technical view on the indices & news events on major frontline stocks.	Pre-market open – Daily	1 Day	1 - 2%	Home Page, Trading Page- Scroller & iCLICK-2-GAIN
Daily Technical	Features three stocks with a trading outlook for the day based on short-term technical trends considering key technical indicators & statistical information.				Home page-Trading recommendation, Research page- Technical recommendations
Daily Derivative	Trading strategy for a day in the futures & options segment based on news events, market trends, technical & other factors governing movements in stocks.				Home page-Trading recommendation, Research page- Technical recommendations, Trading Page - Scroller
Advanced Derivative Strategies	Provides simplified Derivative strategies such as Spreads and Covered calls	Daily			iClick-2-Gain
Intra-day Technical recommendations					
BTST Calls Margin Calls Derivative Calls	Based on short term technical trends and stock specific news/news expectations.	Daily	1 – 2 Days	1 - 2%	Trading Page - iCLICK-2-GAIN
Weekly recommendations					
Weekly Technicals	Features stocks with a trading outlook for a week based on short-term technical trends considering key technical indicators & statistical information.	Weekly	1-7 days	4 – 5%	Home Page & Research Page
Weekly Derivatives	Trading opportunities in futures & options segment based on fundamental & technical analysis also incorporates factors such as overall market trend, volatility & open interest positions of securities.	Weekly			Home Page, Research Page & Trading page -Scroller
Pick of the week	Every week one stock on fundamental and/or technical parameters which have a potential to appreciate by 10% in a 3 month timeframe.	Weekly – every Friday	3 mths	10%	Home Page, Research page, Scroller & Trading page - iClick to Gain
Short -Medium term recommendations					
Stock Picks : Detailed Company Report	Fundamental report understanding the business model and future prospects of the company & valuations.	When published	> 1 yr	> 20% & above	Home page, Research page & Trading page - Scroller, iCLICK-2-GAIN & iClick-2-Invest
Stocks on move	Covers stocks which are likely to show significant upward movement in the next 15 days due to change in trader sentiment.	Fortnightly – every alternate Wednesday	> 7-15 days	5-7%	Home page, Research page & Trading page - Scroller iCLICK-2-GAIN
Monthly Technicals	Trading outlook for a month based on medium-term technical trends considering key technical indicators & statistical information.	Monthly	30 days	10%	Home Page & Research Page
Equity Model Portfolio	A portfolio based on your Risk appetite: Conservative, Moderate and Aggressive				iClick-2-Gain
High Dividend Yield Stocks	Features High Dividend Yielding Stocks for assured returns on investment				iClick-2-Gain

NOTES :

- The Sell below / above price is a key technical level which decides the trend for the day
- Once the call is initiated, an appropriate Stop Loss trigger should be put for the trade
- Once into position, put trailing stops to preserve your profits
- Be careful if the counter achieves the target immediately after opening
- The strategies are valid only for the date mentioned at the top
- Positions should be squared off by the end of the day
- Only stocks in derivatives segment have been considered for daily trading
- Chart shows 50 days on NSE cash market, with 5/8/13/21 day EMAs, volumes & 5-day Slow Stochastics
- The vertical grids show weeks, horizontal grids are price-aligned
- The writer may have position in the stocks discussed
- The strategies are based on intra-day volatility, suggesting a two-way approach intra-day
- Medium to long-term prospects of a stock does not have any bearing on the daily view

MOST IMP: The follow-up and performance review table of the strategies indicates the profit opportunity that was available in the strategies. Individual profits may vary, depending upon the entry and exit price and stop losses.

ICICIdirect.com Technical Desk

ICICI Securities Limited,
7th Floor, Akruiti Centre Point,
MIDC Main Road, Marol Naka
Andheri (East)
Mumbai – 400 093

DISCLAIMER: The report and information contained herein is strictly confidential and meant solely for the selected recipient and may not be altered in any way, transmitted to, copied or distributed, in part or in whole, to any other person or to the media or reproduced in any form, without prior written consent of ICICI Securities Limited. "The author of the report does not hold any investment/open position in any of the companies mentioned in this report. ICICI Securities Services Ltd (I-Sec) may be holding a small number of shares/ an open position in the above referred companies as on the date of release of this report." This report is based on information obtained from public sources and sources believed to be reliable, but no independent verification has been made nor is its accuracy or completeness guaranteed. This report and information herein is solely for informational purpose and may not be used or considered as an offer document or solicitation of offer to buy or sell or subscribe for securities or other financial instruments. Nothing in this report constitutes investment, legal, accounting and tax advice or a representation that any investment or strategy is suitable or appropriate to your specific circumstances. The securities discussed and opinions expressed in this report may not be suitable for all investors, who must make their own investment decisions, based on their own investment objectives, financial positions and needs of specific recipient. This may not be taken in substitution for the exercise of independent judgement by any recipient. The recipient should independently evaluate the investment risks. ICICI Securities Ltd and affiliates accept no liabilities for any loss or damage of any kind arising out of the use of this report. Past performance is not necessarily a guide to future performance. Actual results may differ materially from those set forth in projections. ICICI Securities Ltd may have issued other reports that are inconsistent with and reach different conclusion from the information presented in this report. This report is not directed or intended for distribution to, or use by, any person or entity who is a citizen or resident of or located in any locality, state, country or other jurisdiction, where such distribution, publication, availability or use would be contrary to law, regulation or which would subject ICICI Securities Ltd and affiliates to any registration or licensing requirement within such jurisdiction. The securities described herein may or may not be eligible for sale in all jurisdictions or to certain category of investors. Persons in whose possession this document may come are required to inform themselves of and to observe such restriction.