



## FAIRWEALTH SECURITIES PVT. LTD.

*Wealth Management redefined*

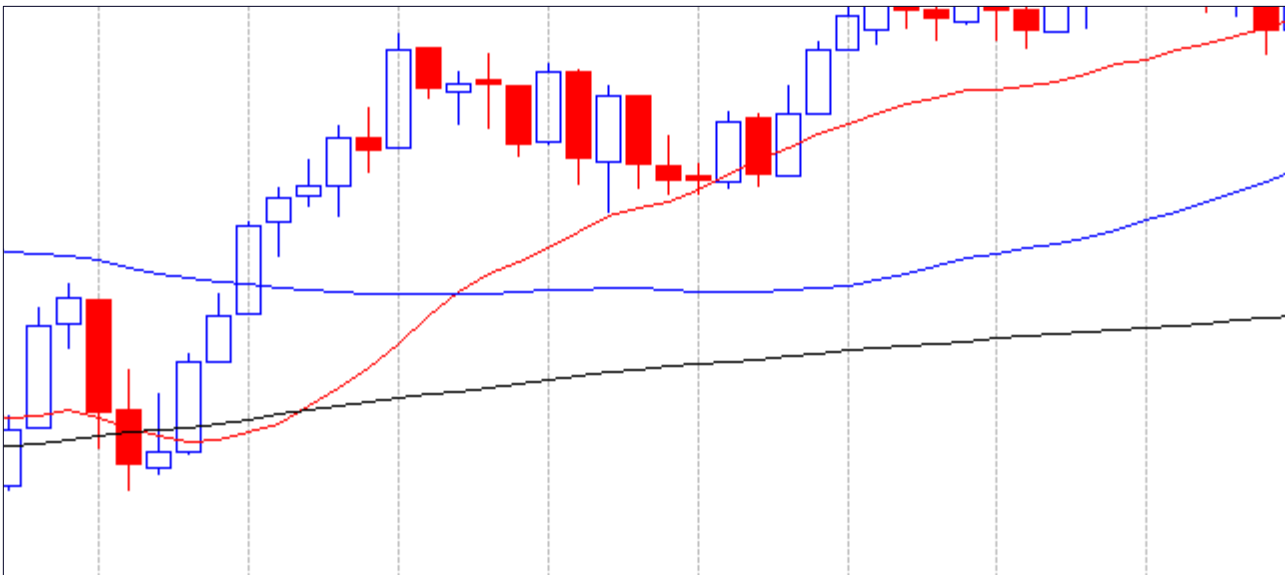
\_\_\_\_\_  
\_\_\_\_\_

**16<sup>th</sup> August , 2010**

**Contact Person:**

Hunny Tarika  
(Sr. Technical Analyst)  
hunny.tarika@fairwealth.in

### NIFTY (Daily)



Nifty for once more held the level of 5350 level well and smartly turned its way up after making a low of 5372 & closed at 5452. Low made on Thursday at 5372 forms a pivotal point here and any closing or intraday break of this level may trigger selling pressure in the markets. Till now Nifty is still in the uptrend and we may see Nifty crossing levels of 5500 and we may even see level of 5600. Support for Nifty is seen at 5372-5350-5210. Resistance is seen at 5500-5545-5600.

### Stock of the Week:

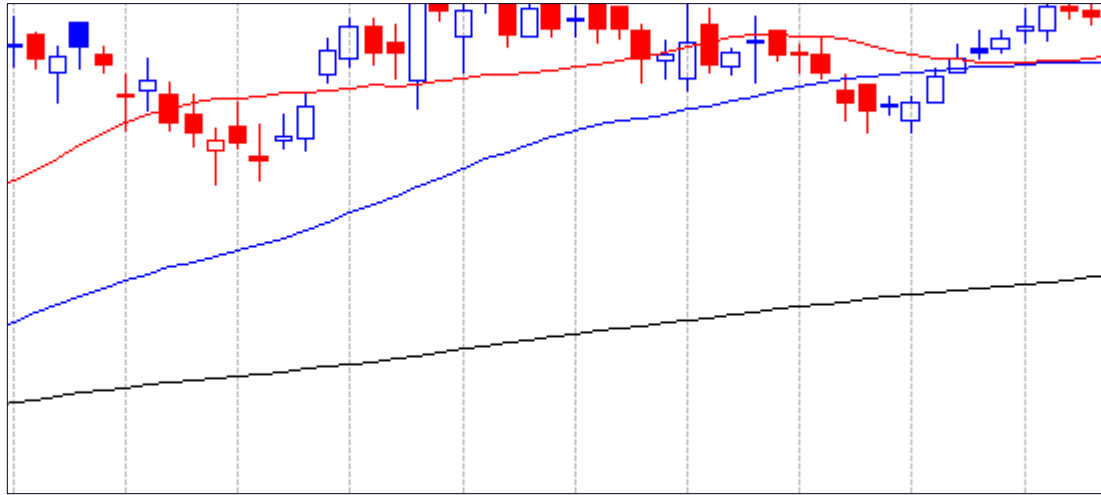
#### **ANDHRA BANK**

Closing price: 151.75

Recommendation: Buy around 150

Target: 160

Stop Loss: Closing below 145



*ANDHRA bank has closed above its resistance level of 151 .So we recommend to buy the stock on dips for a Target of 160 with stop loss placed below 145 on closing basis.*

#### **EQUITIES**

|   | <b>SCRIP NAME</b> | <b>LAST CLOSE</b> | <b>TREND</b> | <b>OUTLOOK</b>                                   |
|---|-------------------|-------------------|--------------|--|
| 1 | GTLINFRA          | 46.30             | <b>DOWN</b>  | Sell around 47 ,Target 44-42,SL 48.50            |
| 2 | CENTURY TEXTILES  | 498               | <b>UP</b>    | Buy around 488,Target 520-550,SL 466.90          |
| 3 | NALCO             | 439               | <b>Up</b>    | Buy on dips ,Target 475,SL 416.90                |
| 4 | ONMOBILE          | 315.80            | <b>UP</b>    | Buy aroud 305,Target 335-350,SL closing beow 289 |

***\*The above stocks are recommended only for the current week***

### **FOLLOW UP OF CALLS:**

| <b>S. N</b> | <b>SCRIP NAME</b> | <b>LAST CLOSE</b> | <b>RECOMMENDATION</b>                        | <b>OUTCOME</b>        |
|-------------|-------------------|-------------------|--|-----------------------|
| 1           | EDELWEISS         | 565(adjusted)     | Buy around 560,Target 620,SL 519.90          | First Target Achieved |
| 2           | EDUCOMP           | 586.45            | Buy if closes above 626,Target 680,SL 604.90 | Target Achieved       |
| 3           | AUROBINDOPHAR     | 950               | Buy around 940,Target 1010,SL 896.90         | High Made 980         |
| 4           | BAJAJAUTO         | 2660              | Sell below 2695,Target 2600-2565,SL 2760     | Both Targets Achieved |
| 5           | BHUSHAN STEEL     | 1610.20           | Buy around 1610,Target 1800,SL 1543.90       | Closed at 1610        |

(Source:All the information and opinions mentioned above are purely based on Technical Analysis)

#### *Disclaimer*

The document is for information purposes only and ought to be construed as an advice on investment or any other subject, neither be construed as an offer or solicitation for the purchase and sale of any other subject, nor be construed as an offer or solicitation for the purchase and sale of any Equity cash & futures. It is based on information available in the public domain and compiled from the sources believed to be reliable, though we have not independently verified its authenticity,accuracy or completeness and as such do not make any representation to effect and opinions given herein based on such information ought to be taken in this background. For the information, statements and opinions given, made or expressed herein or from any omission here from, neither Fairwealth Securities Pvt. Ltd., its directors, officers ,employees,subsidiaries,affiliates and accept any responsibility of whatsoever nature, nor shall they be held liable in any manner for the consequence of any action taken by you based on the information opinion contained herein. You are advised to take informed decisions in consultation with an independent advisor. Fairwealth Securities Pvt. Ltd.,its directors ,officers, employees, subsidiaries ,affiliates and associates may have a position in any of the equities cash & futures mentioned in this report.