

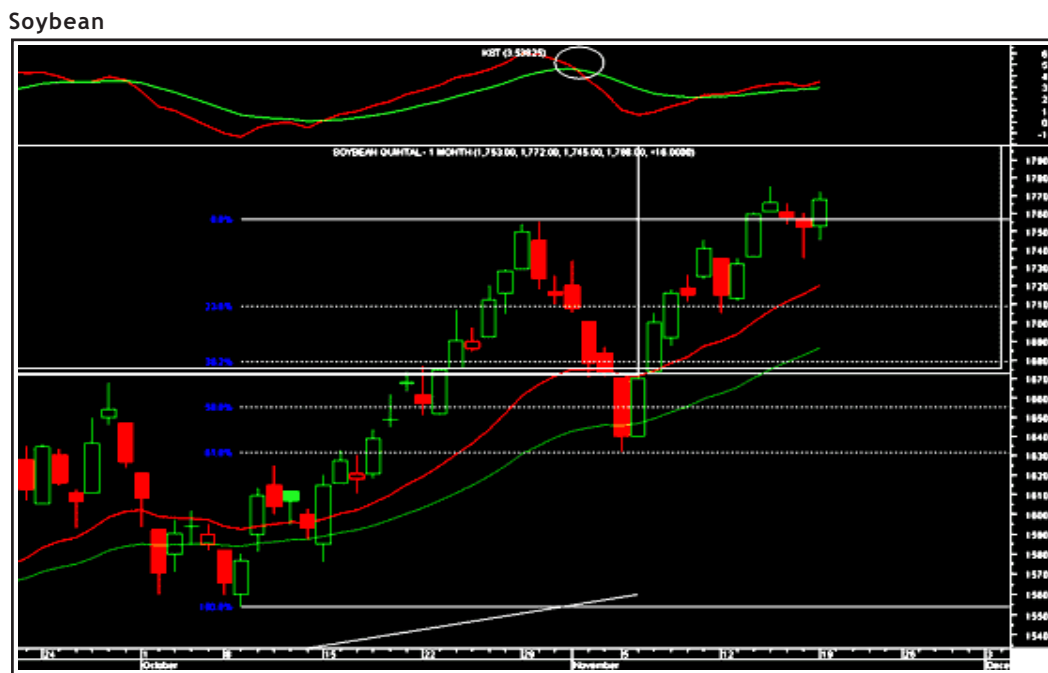


Punter's Call

Soybean faces resistance

Soybean has made an all-time high at Rs1,775 a couple of days back. In yesterday's trade soybean made a high of Rs1,772. Going forward, soybean appears bullish on the

charts and the momentum is also in favour of bulls. Once the Rs1,775 level is surpassed, then Rs1,800 is on the cards.



Short Term Trend

	Target	Trend	Reversal	Support/Resistance
NCDEX Agri	1500	↑	Down below 1425	1430/ 1485

Medium Term Trend

	Target	Trend	Reversal	Support/Resistance
NCDEX Agri	1600	↑	Doen below 1400	1400/ 1500

Icon guide

 Up	 Down	 Downswing matures	 Upswing matures
--	--	---	---

Smart Chart Calls

Date	Recommendation	Stop loss/ Reversal (on closing basis) (Rs)	Price (Rs)	LTP (Rs)	Potential P/L at CMP (%)	Targets (Rs)
26-09-07	Buy Aluminium	DCL-93	98.5	97.6	-0.92%	104-110
24-10-07	Buy Jeera	DCL-10240	10820	10380	-4.24%	11500-12000
12-11-07	Buy Copper	267	279.7	267	-4.76%	290-300

HCL: Hourly closing basis / DCL: Daily closing basis / FMCL: Fifteen minute closing basis

Note: calls are indicative and for record and have been initiated intra-day in the last 24 hours.

Momentum Calls

Date	Recommendation	Stop loss/ Reversal (on closing basis) (Rs)	Price (Rs)	LTP (Rs)	Potential P/L at CMP (%)	Targets (Rs)
12-11-07	Buy Copper	Stopped Out	280	276.5	-1.27%	284-290

HCL: Hourly closing basis / DCL: Daily closing basis / FMCL: Fifteen minute closing basis / TPB: Trailing Profit booked

Note: calls are indicative and for record and have been initiated intra-day in the last 24 hours.

Sharekhan Commodity "ME" Portfolio

Recommendation	Stop loss/ Reversal (on closing basis) (Rs)	Price (Rs)	LTP (Rs)	Potential P/L at CMP (%)	Targets (Rs)
Cash					
Cash					
Cash					
Cash					

HCL: Hourly closing basis / DCL: Daily closing basis / FMCL: Fifteen minute closing basis

Note: calls are indicative and for record and have been initiated intra-day in the last 24 hours.

Day Trader's HIT List (commodities)

For November 20, 2007

Exchange	Contract	Instrument	Support S1	Levels S2	LTP (Rs)	Resistance R2	Levels R1	Mode & Action
MCX	Nov	Cardamom	558.33	569.67	576.33	587.67	594.33	Buy on decline at S2.
NCDEX	Nov	Chili	4268.00	4330.00	4365.00	4427.00	4462.00	Buy above R2.
NCDEX	Nov	Chana	2319.33	2326.67	2333.33	2340.67	2347.33	Sell below S2.
NCDEX	Nov	Guar Seeds	1593.33	1601.67	1610.33	1618.67	1627.33	Sell below S2.
NCDEX	Nov	Jeera	10081.00	10247.00	10366.00	10532.00	10651.00	Sell below S2.
MCX	Nov	Mentha Oil	444.53	447.57	450.03	453.07	455.53	Buy above R2.
NCDEX	Nov	Pepper	13436.33	13615.67	13745.33	13924.67	14054.33	Buy on decline at S2.
MCX	Nov	Potato	487.80	493.20	496.60	502.00	505.40	Buy above R2.
NCDEX	Nov	Refined Soy Oil	516.20	518.50	520.20	522.50	524.20	Buy on decline at S2.
NCDEX	Nov	Soybean	1734.67	1751.33	1761.67	1778.33	1788.67	Buy on decline at S2.
NCDEX	Nov	Turmeric	1947.67	1982.33	2003.67	2038.33	2059.67	Buy above R2/Sell below S2.

[Home](#)

To know more about our [products and services](#) click here.

For Private Circulation only

"This document has been prepared by Sharekhan Commodities Pvt. Ltd. and is intended only for the person or entity to which it is addressed to and may contain confidential and/or privileged material and is not for any type of circulation. Any review, retransmission, or any other use is prohibited. Kindly note that this document does not constitute an offer or solicitation for the purchase or sale of any financial instrument or as an official confirmation of any transaction. If you have received this in error, please contact the sender and delete the material immediately from your computer/mailbox. The information contained herein is from sources believed reliable. We do not represent that it is accurate or complete and it should not be relied upon as such. We may from time to time have positions in, or options on, and buy and sell securities referred to herein. We may from time to time solicit from, or perform investment banking, or other services for, any company mentioned. Any comments or statements made herein do not necessarily reflect those of Sharekhan Commodities Pvt. Ltd."