



Punter's Call

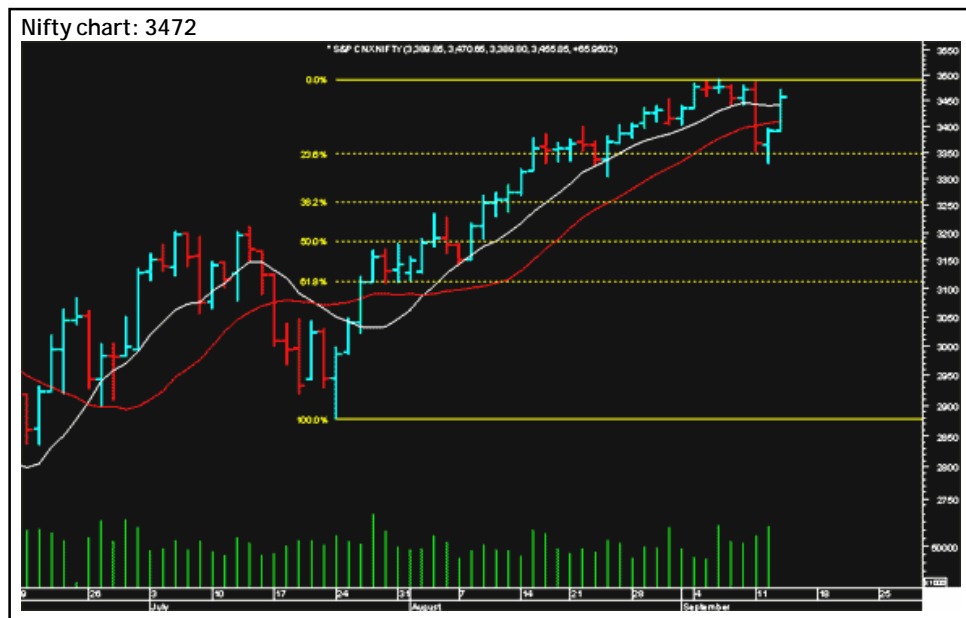
Keep an eye on 3490

The Nifty closed the trading session near its 3490-resistance level. In the short term the index should continue its upmove amid high volatility. On a break above 3490 the Nifty should test 3520, which is the 78% retracement level of the fall from 3774 to 2590. On the downside there are supports at the 10-DMA at 3445 and at the 20-DMA at 3416. As long as the index is above the 20-DMA at 3416, the bias is up.

ONGC could test Rs1,134 and it faces a resistance at Rs1,172. SBI looks good above Rs965 and on the upside it could test Rs1,005. The stock has a support at Rs945. Tata Power could test Rs542 and it has a support at Rs514.

Market Breadth

	BSE	NSE
Advances	1,137	636
Declines	1,367	614
Unchanged	65	30



Short Term Trend

	Target	Trend	Reversal	Support/Resistance
Short term (Nifty)	3490	↑	Down below 3416	3416 / 3490

Icon guide

↑ Up	↓ Down	↘ Downswing matures	↗ Upswing matures
------	--------	---------------------	-------------------

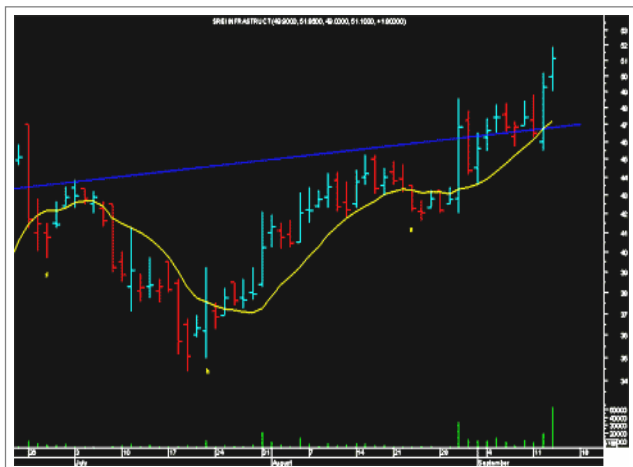
Medium Term Trend

	Target	Trend	Reversal	Support/Resistance
Medium term (Nifty)	3520	↑	Down below 3350	3350 / 3520

Icon guide

↑ Up	↓ Down	↘ Downswing matures	↗ Upswing matures
------	--------	---------------------	-------------------

Smart Charts



SREI International—Buy

CMP: Rs53

Buy SREI International with a stop loss of Rs47 for a target of Rs65. The stock has witnessed a breakout from a head-and-shoulders pattern.



Balrampur Chini—Buy

CMP: Rs98

Go long in Balrampur Chini with a stop loss of Rs90 for a target of Rs115. The stock has witnessed a crossover of the 10-DMA and the 20-DMA.

Smart Charts > Open Long Calls

Date	Recommendation	Stop Loss/ Reversal (Intra-day)	Stop Loss/ Reversal (Closing)	Buy Price	Closing Price	Potential % P/L at CMP	Targets
14-09-06	Balrampur Chini	-	90	98	97	0%	115
14-09-06	SREI International	-	47	53	53	0%	65
14-09-06	Mercator Lines	-	39.4	43	44	1%	50-52
14-09-06	Nocil	-	19.7	24	26	7%	30-33
13-09-06	Bharti	-	389.4	436.6	439	0%	510-540
08-09-06	Jindal Saw	-	294.4	323	310	-4%	379
08-09-06	LIC Housing Finance	-	153.0	166	161	-3%	190
08-09-06	Nalco	-	198.0	214	202	-6%	250
08-09-06	Nirma	-	374.4	391.2	393	0%	424
04-09-06	Praj Industries	159.7	-	183.5	163	-11%	214
18-08-06	Bharat Forge	-	316.8	348	347	0%	409
18-08-06	Aptech Training	-	110.0	123	115	-7%	155
10-08-06	Aftek Infosys	-	56.0	62	63	1%	80

Momentum Calls > Open Long Calls

For the short term—1 to 5 days

Stock	Product type	Action date	Stop loss	Closing Price	Target 1	Target 2
Bank of India	Cash / Future	14-09-06	146.7	151.8	157	162
Nifty Future	Future	14-09-06	3456	3480	3515	3530
Hero Honda	Cash / Future	14-09-06	734.4	761.0	785	810
GE Shipping	Cash / Future	14-09-06	278.4	285.0	293	300
Allahabad Bank	Cash / Future	14-09-06	75.7	79.8	83.5	87.0
Century Textile	Cash / Future	14-09-06	484.4	495.5	505	515

NOTE: Kindly note that all stopl losses in Momentum Calls are on an intra-day basis.

Trendy Levels

Sensex		Nifty	
Support	Resistance	Support	Resistance
11880	12000	3450	3490
11750	12100	3400	3520
11500	12250	3330	3550
20DSMA	40DEMA	20DSMA	40DEMA
11705	11387	3416	3326
BSE Sensex: 11973		Nifty: 3472	

Day Trader's HIT List

For September 15, 2006

Scrip Name	Support Levels		Close (Rs)	Resistance Levels		Action
	S1	S2		R2	R1	
NIFTY Futures	3410	3450	3468	3480	3520	Go long above R2. Go short below S2.
ACC	935	940	944	955	960	Buy with a stop below S2.
Century	480	484	489	500	502	Buy with a stop below S2.
Hindalco	168	170	172	174	178	Buy above R2.
Infosys	1795	1810	1829	1845	1850	Buy with a stop below S2.
M & M	625	633	637	640	650	Go long above R2. Go short below S2.
Maruti	935	945	949	952	962	Go long above R2. Go short below S2.
MTNL	155	157	160	165	170	Buy with a stop below S2.
ONGC	1140	1152	1159	1164	1178	Go long above R2. Go short below S2.
Reliance	1110	1120	1126	1135	1140	Buy with a stop below S2.
Reliance Capital	520	528	532	535	545	Go long above R2. Go short below S2.
Satyam	790	805	810	815	825	Go long above R2. Go short below S2.
SBI	962	972	976	985	988	Buy with a stop below S2.
TCS	995	1005	1012	1020	1025	Buy with a stop below S2.
Tisco	495	498	508	511	513	Go short with a stop above R2.
Tata Motors	850	860	865	871	885	Go long above R2. Go short below S2.
Ranbaxy	405	410	414	416	423	Buy above R2.
VSNL	390	400	407	410	420	Go long above R2. Go short below S2.
Titan	785	790	797	801	810	Buy above R2.
Wipro	505	510	514	521	525	Buy with a stop below S2.
Rcom	318	322	324	330	333	Buy with a stop below S2.

*Note: Closing price of Nifty futures is last traded price of Nifty futures on NSE

For Private Circulation only

[Home](#)

Disclaimer

*This document has been prepared by Sharekhan Ltd. (SHAREKHAN). This Document is subject to changes without prior notice and is intended only for the person or entity to which it is addressed to and may contain confidential and/or privileged material and is not for any type of circulation. Any review, retransmission, or any other use is prohibited. Kindly note that this document does not constitute an offer or solicitation for the purchase or sale of any financial instrument or as an official confirmation of any transaction.

Though disseminated to all the customers simultaneously, not all customers may receive this report at the same time. SHAREKHAN will not treat recipients as customers by virtue of their receiving this report.

The information contained herein is from publicly available data or other sources believed to be reliable. While we would endeavour to update the information herein on reasonable basis, SHAREKHAN, its subsidiaries and associated companies, their directors and employees ("SHAREKHAN and affiliates") are under no obligation to update or keep the information current. Also, there may be regulatory, compliance, or other reasons that may prevent SHAREKHAN and affiliates from doing so. We do not represent that information contained herein is accurate or complete and it should not be relied upon as such. This document is prepared for assistance only and is not intended to be and must not alone be taken as the basis for an investment decision. The user assumes the entire risk of any use made of this information. Each recipient of this document should make such investigations as it deems necessary to arrive at an independent evaluation of an investment in the securities of companies referred to in this document (including the merits and risks involved), and should consult its own advisors to determine the merits and risks of such an investment. The investment discussed or views expressed may not be suitable for all investors. We do not undertake to advise you as to any change of our views. Affiliates of Sharekhan may have issued other reports that are inconsistent with and reach different conclusion from the information presented in this report.

This report is not directed or intended for distribution to, or use by, any person or entity who is a citizen or resident of or located in any locality, state, country or other jurisdiction, where such distribution, publication, availability or use would be contrary to law, regulation or which would subject SHAREKHAN and affiliates to any registration or licensing requirement within such jurisdiction. The securities described herein may or may not be eligible for sale in all jurisdictions or to certain category of investors. Persons in whose possession this document may come are required to inform themselves of and to observe such restriction.

SHAREKHAN & affiliates may have used the information set forth herein before publication and may have positions in, may from time to time purchase or sell or may be materially interested in any of the securities mentioned or related securities. SHAREKHAN may from time to time solicit from, or perform investment banking, or other services for, any company mentioned herein. Without limiting any of the foregoing, in no event shall SHAREKHAN, any of its affiliates or any third party involved in, or related to, computing or compiling the information have any liability for any damages of any kind. Any comments or statements made herein are those of the analyst and do not necessarily reflect those of SHAREKHAN.*