



Punter's Call

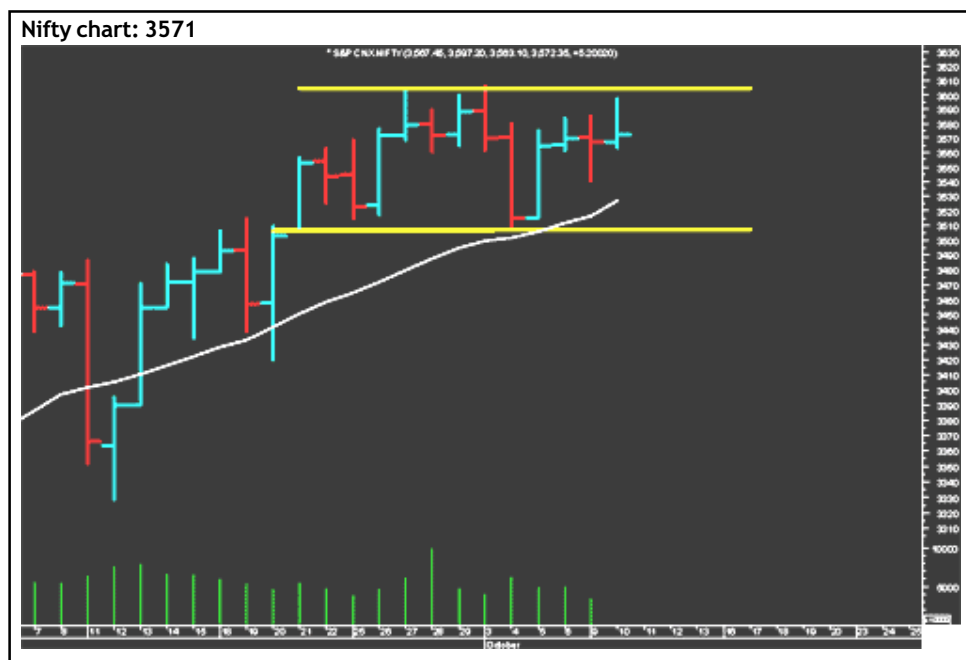
### Stuck in a range

The Nifty opened on a firm note, but could not sustain above the 3585-3595-resistance range and witnessed profit booking. The index ended the trading session on a flat note with marginal gains. In the short-term the Nifty should continue to trade and consolidate in the 3606-3508 range till there is a breakout from the range. On a break above 3606 the index could test higher levels around 3645. On the downside there is an intra-day support at the 10-DMA at 3567 and on a break below 3567 the next support is in the 3527-3508 range. As long as the Nifty closes below 3600, the short-term bias is down.

Tisco looks weak and on the downside it could test Rs510. The stock faces a resistance at Rs532. Tata Motors is exhibiting strength above Rs904 and on the upside it could test Rs925. The stock has a support at Rs890. RCOM has a support at Rs336 and it faces a resistance at Rs352.

#### Market Breadth





	BSE	NSE
Advances	1,362	705
Declines	1,160	609
Unchanged	66	28



## Short Term Trend

	Target	Trend	Reversal	Support/Resistance
Short term (Nifty)	3500	↓	Up above 3600	3545 / 3600





### Icon guide

 Up	 Down	 Downswing matures	 Upswing matures
--	--	---	---

## Medium Term Trend

	Target	Trend	Reversal	Support/Resistance
Medium term (Nifty)	3620	↑	Down below 3400	3400 / 3600

### Icon guide

 Up	 Down	 Downswing matures	 Upswing matures
--	--	---	---

## Smart Charts > Open Long Calls

Date	Recommendation	Stop Loss/ Reversal (Intra-day)	Stop Loss/ Reversal (Closing)	Buy Price	Closing Price	Potential % P/L at CMP	Targets
09-10-06	TV Today	-	69.4	77.0	76.6	-1%	90-92
09-10-06	Henkel	-	26.4	28.6	27.9	-3%	33
09-10-06	Fedders Lloyd	-	106.7	128.0	125.3	-2%	165-170
09-10-06	Clutch Auto	-	114.4	127.5	124.7	-2%	150-155
09-10-06	D-Link	-	89.7	97.8	100.7	3%	112
09-10-06	CEAT	-	115.4	133.0	129.7	-3%	170
09-10-06	Tube Investment	-	78.0	88.0	88.1	0%	110
09-10-06	McDowell	-	594.4	629.5	631.1	0%	700-720
09-10-06	Dewan Housing Finance	-	68.4	75.8	79.9	5%	90-93
09-10-06	Nocil	-	21.7	25.5	27.9	9%	33-35
05-10-06	Hero Honda	-	694.0	757.0	750.4	-1%	860-880
03-10-06	Mahindra & Mahindra	-	629.4	692.0	696.5	1%	749-809
28-09-06	Gateway Distriparks	-	148.4	164.0	173.4	6%	180-195
25-09-06	Satyam	-	396.4	417.0	407.3	-2%	460-490
19-09-06	Tricom India	-	197.4	215.0	206.2	-4%	250
19-09-06	Hindustan Motor	-	37.7	41.8	40.3	-4%	46-50
19-09-06	Exide Industries	-	38.7	41.8	40.1	-4%	46-50
19-09-06	Sterlite Optical	-	158.4	174.0	178.5	3%	200-206
18-09-06	Finlex Industries	-	84.4	99.4	97.2	-2%	129-135
14-09-06	Balrampur Chini	-	90.0	98.0	100.7	3%	115
14-09-06	SREI International	-	47.0	53.0	51.9	-2%	65
14-09-06	Mercator Lines	-	39.4	43.0	42.9	0%	50-52
13-09-06	Bharti	-	449.4	436.6	468.4	7%	510-540
08-09-06	Jindal Saw	-	294.4	323.0	355.6	10%	379
08-09-06	LIC Housing Finance	-	Book Profit	166.0	174.0	5%	190
08-09-06	Nalco	-	198.0	214.0	217.5	2%	250
08-09-06	Nirma	-	374.4	391.2	401.5	3%	424
04-09-06	Praj Industries	159.7	-	183.5	187.6	2%	214
18-08-06	Aptech Training	-	Book Profit	123.0	142.0	15%	155

## Advantage Options

Date	Name	Expiry	Reco Price	Strike Price	CMP (Rs)	Target (Rs)	Stop Loss (Rs)
25-09-06	Buy Satyam Oct Call	26-Oct	12.5	430	7.80	30	4

## Momentum Calls > Open Long Calls

### For the short term—1 to 5 days

Stock	Product type	Action date	Stop loss	Closing Price	Target 1	Target 2
Hindustan Zinc	Cash / Future	10-10-06	649.4	661.0	679	694
Tulip IT	Cash / Future	09-10-06	319.4	324.4	340	350
Hindustan Zinc	Cash / Future	09-10-06	Book Profit	648.0	633	648
NTPC	Cash / Future	03-10-06	128.4	132.0	138	143
IPCL	Cash / Future	21-09-06	Exit	312.6	325	339

NOTE: Kindly note that all stop losses in Momentum Calls are on an intra-day basis.

## Momentum Calls > Open Short Calls

### For the short term—1 to 5 days

Stock	Product type	Action date	Stop loss	Closing Price	Target 1	Target 2
BHEL	Cash / Future	10-10-06	2391.6	2335	2285	2230
Nifty Future	Cash / Future	05-10-06	3595	3571	3520	-
Wipro	Cash / Future	04-10-06	528	520	490	-

NOTE: Kindly note that all stop losses in Momentum Calls are on an intra-day basis.

## Trendy Levels

Sensex		Nifty	
Support	Resistance	Support	Resistance
12250	12440	3567	3585
12178	12555	3527	3600
12070	12676	3500	3620
<b>20DSMA</b>	<b>40DEMA</b>	<b>20DSMA</b>	<b>40DEMA</b>
12198	11902	3527	3453
<b>BSE Sensex: 12364</b>		<b>Nifty: 3571</b>	

## Day Trader's HIT List

For October 11, 2006

Scrip Name	Support Levels		Close (Rs)	Resistance Levels		Action
	S1	S2		R2	R1	
<b>NIFTY Futures</b>	3545	3565	<b>3575</b>	3585	3615	Go long above R2. Go short below S2.
<b>ACC</b>	975	980	<b>988</b>	992	996	Go short with a stop above R2.
<b>Century</b>	505	508	<b>512</b>	518	520	Buy with a stop below S2.
<b>Hindalco</b>	170	173	<b>175</b>	181	185	Buy with a stop below S2.
<b>Infosys</b>	1875	1900	<b>1906</b>	1915	1935	Go long above R2. Go short below S2.
<b>M &amp; M</b>	685	688	<b>696</b>	701	704	Go short with a stop above R2.
<b>Maruti</b>	939	948	<b>952</b>	956	966	Go long above R2. Go short below S2.
<b>MTNL</b>	155	158	<b>160</b>	165	167	Buy with a stop below S2.
<b>ONGC</b>	1125	1132	<b>1145</b>	1151	1160	Go short with a stop above R2.
<b>Reliance</b>	1140	1145	<b>1150</b>	1160	1165	Buy with a stop below S2.
<b>Reliance Capital</b>	562	570	<b>573</b>	577	585	Go long above R2. Go short below S2.
<b>Satyam</b>	396	403	<b>407</b>	410	418	Go long above R2. Go short below S2.
<b>SBI</b>	1010	1018	<b>1026</b>	1032	1038	Go short with a stop above R2.
<b>TCS</b>	995	1005	<b>1011</b>	1015	1025	Go long above R2. Go short below S2.
<b>Tata Steel</b>	505	510	<b>518</b>	522	528	Go short with a stop above R2.
<b>Tata Motors</b>	898	905	<b>912</b>	920	925	Buy with a stop below S2.
<b>Ranbaxy</b>	415	420	<b>423</b>	426	435	Buy above R2.
<b>VSNL</b>	410	418	<b>421</b>	425	435	Go long above R2. Go short below S2.
<b>Titan</b>	780	790	<b>793</b>	798	810	Go long above R2. Go short below S2.
<b>Wipro</b>	506	510	<b>520</b>	524	528	Go short with a stop above R2.
<b>Rcom</b>	338	341	<b>344</b>	348	352	Buy with a stop below S2.

\*Note: Closing price of Nifty futures is last traded price of Nifty futures on NSE

For Private Circulation only

[Home](#)

### Disclaimer

"This document has been prepared by Sharekhan Ltd.(SHAREKHAN) This Document is subject to changes without prior notice and is intended only for the person or entity to which it is addressed to and may contain confidential and/or privileged material and is not for any type of circulation. Any review, retransmission, or any other use is prohibited. Kindly note that this document does not constitute an offer or solicitation for the purchase or sale of any financial instrument or as an official confirmation of any transaction.

Though disseminated to all the customers simultaneously, not all customers may receive this report at the same time. SHAREKHAN will not treat recipients as customers by virtue of their receiving this report.

The information contained herein is from publicly available data or other sources believed to be reliable. While we would endeavour to update the information herein on reasonable basis, SHAREKHAN, its subsidiaries and associated companies, their directors and employees ("SHAREKHAN and affiliates") are under no obligation to update or keep the information current. Also, there may be regulatory, compliance, or other reasons that may prevent SHAREKHAN and affiliates from doing so. We do not represent that information contained herein is accurate or complete and it should not be relied upon as such. This document is prepared for assistance only and is not intended to be and must not alone be taken as the basis for an investment decision. The user assumes the entire risk of any use made of this information. Each recipient of this document should make such investigations as it deems necessary to arrive at an independent evaluation of an investment in the securities of companies referred to in this document (including the merits and risks involved), and should consult its own advisors to determine the merits and risks of such an investment. The investment discussed or views expressed may not be suitable for all investors. We do not undertake to advise you as to any change of our views. Affiliates of Sharekhan may have issued other reports that are inconsistent with and reach different conclusion from the information presented in this report.

This report is not directed or intended for distribution to, or use by, any person or entity who is a citizen or resident of or located in any locality, state, country or other jurisdiction, where such distribution, publication, availability or use would be contrary to law, regulation or which would subject SHAREKHAN and affiliates to any registration or licensing requirement within such jurisdiction. The securities described herein may or may not be eligible for sale in all jurisdictions or to certain category of investors. Persons in whose possession this document may come are required to inform themselves of and to observe such restriction.

SHAREKHAN & affiliates may have used the information set forth herein before publication and may have positions in, may from time to time purchase or sell or may be materially interested in any of the securities mentioned or related securities. SHAREKHAN may from time to time solicit from, or perform investment banking, or other services for, any company mentioned herein. Without limiting any of the foregoing, in no event shall SHAREKHAN, any of its affiliates or any third party involved in, or related to, computing or compiling the information have any liability for any damages of any kind. Any comments or statements made herein are those of the analyst and do not necessarily reflect those of SHAREKHAN."