



**NIFTY- TECHNICAL OUTLOOK:**

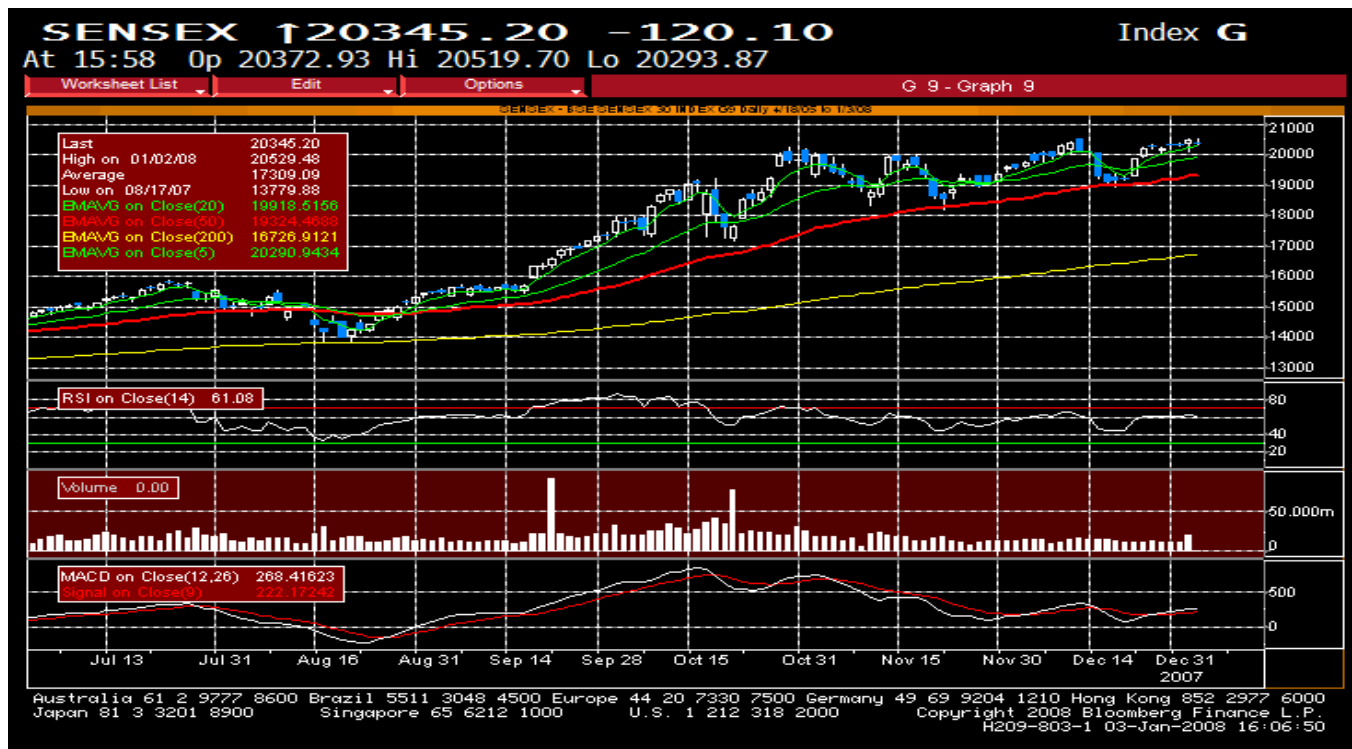


Nifty indicates consolidation pattern in daily charts. Nifty may face buying pressure above 6,200 levels. However below 6,155 levels selling pressure is expected. It may face resistance for intraday at 6,200 levels and 6,240 levels and may face support at 6,155 and 6,130 levels. As per moving averages, Nifty is trading above 20-day moving average, which is at 5,999 levels and above 50-day moving average, which is at 5,786 levels. RSI (14 days) is at 65. Volume is quite normal.

**NIFTY - INTRADAY SUPPORT AND RESISTANCES:**

	NATURE	EXPIRY	RES1	RES2	RES3	SUP1	SUP2	SUP3
NIFTY	CASH		6200	6240	6265	6155	6130	6110
NIFTY	FUTURE	JAN	6190	6235	6280	6165	6140	6120

**SENSEX-TECHNICAL OUTLOOK:**



Sensex indicates consolidation pattern in daily charts. Sensex may face buying pressure above 20,530 levels. However below 20,410 levels selling pressure is expected. However it may face resistance for intraday at 20,530 levels and 20,650 levels and may face support at 20,410 and 20,340 levels. As per moving averages, Sensex is trading above 20-day moving average, which is at 19,919 and above 50-day moving average, which is at 19,324 levels. RSI (14 days) is at 61. Volume is quite normal.

**SENSEX- INTRADAY SUPPORT AND RESISTANCES:**

	NATURE	EXPIRY	RES1	RES2	RES3	SUP1	SUP2	SUP3
SENSEX	CASH		20530	20650	20720	20410	20335	20275
SENSEX	FUTURE	JAN	20580	20680	20795	20355	20155	19955

**MAJOR GLOBAL INDICES AND THEIR TREND: (as on 04th January 9:30 am)**

	%CHG	COMMENTS
<b>AMERICA</b>		
DOW JONES INDUS.AVG	0.10	Likely to be Bounceback
S&P 500 INDEX	-1.44	Likely to be Bounceback
NASDAQ COMPOSITE INDEX	-0.27	Likely to be Bounceback
<b>EUROPE</b>		
FTSE 100 INDEX	0.98	Likely to Consolidate
DAX INDEX	-0.51	Likely to Consolidate
<b>ASIA</b>		
NIKKEI 225	-4.03	Likely to be Bounceback
HANGSENG INDEX	1.21	Likely to be Bounceback

**SECTORAL INDICES AND THEIR TREND:**

**BANKEX: (BSE BANK INDEX)**



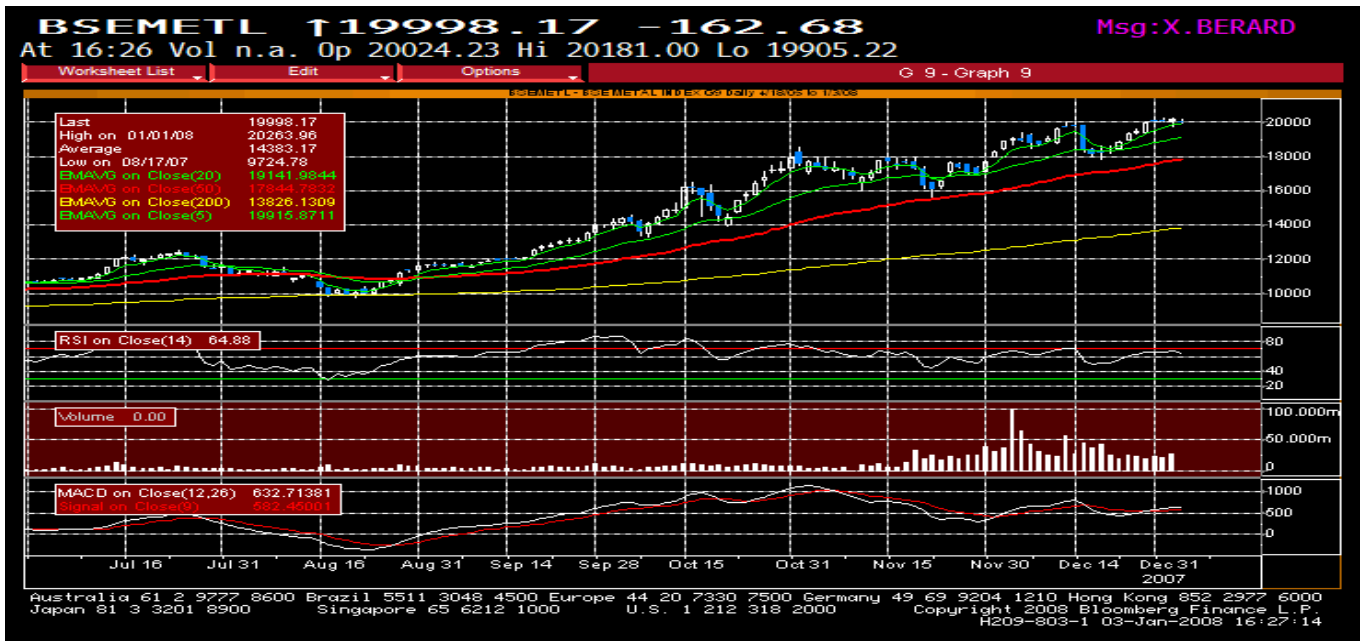
The chart indicates consolidation pattern in the daily chart. It is looking bullish above 11,780 levels. However fresh selling is expected below 11,655. Trend of the index can be correlated to pick up stocks in the banking sector.

**BSE IT INDEXES:**



The chart indicates consolidation pattern in daily chart. The trend of this index can be correlated to pick up stocks in the IT sector.

**BSE METAL INDEX:**



The chart indicates consolidation pattern in the daily chart. Selling pressure is expected below 19,910. However it may face buying pressure above 20,040 levels.

**BSE OIL AND GAS INDEX:**



The chart indicates consolidation pattern in the daily chart. Selling pressure is expected below 13,560 levels.

**BSE CAPITAL GOODS INDEX:**



The chart indicates consolidation pattern in daily chart. Selling pressure is expected below 19,470 levels. However it may face buying pressure above 19,575 levels.

**TECHNICAL OUTLOOK FOR OTHER INDICES:**

	INDICES	RES1	RES2	RES3	SUP1	SUP2	SUP3	COMMENTS
BSE	PSU INDEX	11055	11280	11415	10825	10690	10575	CONSOLIDATION
BSE	FMCG	2395	2440	2485	2365	2345	2320	CONSOLIDATION
BSE	AUTO	5740	5800	5855	5705	5675	5645	CONSOLIDATION
BSE	CONS.DURABLE	6830	6935	7120	6735	6645	6535	BULLISH
BSE	HEALTH CARE	4430	4485	4540	4375	4345	4315	CONSOLIDATION

**SUPPORTS AND RESISTANCES FOR TRADEABLE INDICES:**

INDICES	RES1	RES2	RES3	SUP1	SUP2	SUP3
BANK NIFTY	10165	10335	10500	9980	9895	9790
CNX IT	4665	4700	4730	4600	4540	4505

**STOCK PICK:**



**BUY JSW STEEL FUTURES ABOVE 1360 TARGET 1390 STOPLOSS 1345.**

**(ENTER THE COUNTER ONLY ABOVE 1360 LEVELS)**

## INDICATORS:

NAME	LAST_TRADE	5 DAY MOV AVG	20 DAY MOV AVG	MACD	RSI	DIFF IN OPEN INT
Aban Offshore Ltd Jan08	5120.05	5019	4938	-2	60	-1%
ABB Ltd Jan08	1512.95	1521	1562	-16	43	2%
Alstom Projects Jan08	1072	1032	1037	4	58	0%
Aditya Birla Ltd Jan08	2103	2074	1857	79	74	3%
ACC Limited Jan08	1018	1031	1058	-15	38	6%
Gujarat Ambuga Cem Jan08	145.45	147	149	-1	41	7%
Adlabs Films Ltd Jan08	1600	1498	1367	122	76	2%
AIA Engineering Jan08	1690	1695	1696	39	55	2%
Ashok Leyland Ltd Jan08	53	52	52	2	61	4%
Allahabad Bank Jan08	140	131	122	3	72	3%
Alok Industries Jan08	104.35	105	93	6	69	-3%
AMTEK Auto Ltd Jan08	447.9	439	455	-3	47	19%
Andhra Bank Ltd Jan08	125.5	115	110	3	72	0%
Ansal Property Jan08	410	426	381	39	65	0%
Aptech Ltd Jan08	418.5	421	404	3	56	-2%
Aurobindo Pharma Jan08	544.35	550	541	2	50	3%
Arvind Mills Ltd Jan08	87.4	90	83	3	58	-3%
Axis Bank Jan08	1045	1008	972	6	67	16%
Bata India Jan08	278.25	279	263	6	60	6%
Bombay Dyeing Jan08	933	828	762	11	79	-2%
Bharat Earth Mover Jan08	1755	1742	1726	-2	55	2%
Bharti Airtel Jan08	952.2	972	966	4	48	10%
Bharat Electronics Jan08	2096	2120	1937	20	67	0%
Bharat Hvy Electrc Jan08	2525	2578	2602	-38	44	6%
Bharat Forge Ltd Jan08	375	368	357	3	64	-2%
Bhushan Steel Jan08	1630	1613	1487	79	65	-5%
Ballarpur Ind Jan08	180.55	181	176	6	58	4%
Biocon Ltd Jan08	622	605	591	3	64	-1%
Bajaj Auto Limited Jan08	2605	2633	2735	27	39	5%
Bajaj Hindustan Jan08	289.25	292	269	20	63	1%
Birla Corp Jan08	337	337	338	-2	48	1%
Oswal Chem & Fert Jan08	77.95	75	69	5	74	-2%
Bank of Baroda Jan08	497.3	480	435	19	76	0%
Bank of India Jan08	388.25	380	369	4	65	-6%
Bharat Petroleum Jan08	538	509	455	20	75	6%
Balrampur Chini Jan08	114.5	116	111	5	57	1%
Bombay Rayon Jan08	373	367	353	14	65	0%
Bongaigaon Ref Ltd Jan08	103.6	107	103	4	56	-6%
Cairn India Ltd Jan08	254.65	250	231	6	67	2%
Canara Bank Ltd Jan08	408	361	321	9	83	21%
Central Bank of In Jan08	145.25	143	140	1	59	-1%
Century Textile In Jan08	1221	1214	1145	13	62	-2%
CESC Limited Jan08	687	651	628	5	70	14%
Chambal Fertilizer Jan08	90.5	89	87	6	63	-3%
Cipla Limited Jan08	218.1	217	210	7	63	2%

CMC Ltd Jan08	1435	1433	1214	76	73	2%
Crompton Greaves Jan08	404.2	398	402	-8	50	0%
Corporation Bank Jan08	467.7	455	438	1	61	0%
Dabur India Ltd Jan08	120.35	118	118	1	58	15%
Dena Bank Jan08	94.5	91	88	2	66	-2%
Deccan Aviation Jan08	287	286	283	22	59	1%
Divi's Lab Ltd Jan08	1911.5	1903	1828	43	63	1%
DLF Ltd Jan08	1092	1085	1023	24	69	-3%
Dr Reddy's Labrtry Jan08	718.05	729	707	21	56	12%
Educomp Solutions Jan08	4531	4718	4238	220	62	6%
Everest Kanto Jan08	374	361	343	10	67	-6%
Escorts Limited Jan08	170	164	158	4	63	-2%
Essar Oil Limited Jan08	338	339	306	36	67	-4%
Federal Bank Ltd Jan08	349	345	333	0	59	31%
Gail India Ltd Jan08	541.85	543	515	22	64	-2%
Gujarat Alkalies Jan08	274	258	236	14	73	6%
Gateway Distripark Jan08	169.6	166	154	3	67	1%
Great Eastern Ship Jan08	541.9	557	525	11	56	-1%
GlaxoSmithkline Jan08	1032.9	1042	1024	-1	49	4%
GMR Infrastructure Jan08	253.5	253	248	6	59	0%
Gujarat Narmada Jan08	223.75	221	202	10	68	2%
Grasim Industries Jan08	3639	3732	3698	-24	44	10%
GTS Ltd Jan08	305.35	287	270	1	75	3%
Havell's India Ltd Jan08	706.8	709	678	8	60	4%
Hindustan Construc Jan08	254.2	246	221	3	66	18%
HCL Technologies Jan08	308.5	317	312	1	47	5%
HDFC Bank Limited Jan08	1698	1721	1719	12	50	7%
Housing Dvlmt Finc Jan08	3047	2986	2934	48	60	3%
Housing Devt & Inf Jan08	1164.1	1128	983	72	80	1%
Matrix Laboratory Jan08	249.85	246	234	1	60	1%
HTMT Glob Solution Jan08	594	577	562	3	59	10%
Hero Honda Motors Jan08	703.5	703	703	-4	46	3%
Hindalco Industry Jan08	215.1	217	207	3	58	2%
Hindustan Petrolm Jan08	403.9	376	335	17	76	2%
Hindustan Lever Jan08	220.65	218	212	1	60	9%
India Cements Ltd Jan08	301	309	308	4	47	5%
ICICI Bank Limited Jan08	1238.55	1243	1225	4	53	11%
Indust Devel Bank Jan08	174.65	171	170	1	58	-6%
NIDEA Cellular Ltd Jan08	132.45	135	134	1	49	7%
Infrastructure Dev Jan08	232	232	225	6	61	-1%
IFCI Limited Jan08	91.75	92	99	-1	47	0%
I-Flex Solutions Jan08	1512.5	1532	1543	6	47	0%
Indian Hotels Co Jan08	171.1	169	154	4	67	3%
IndusInd Bank Jan08	128.5	130	129	5	56	0%
India Infoline Jan08	1908	1903	1606	127	77	5%



3i Infotech Ltd Jan08	146.05	147	145	2	55	0%
Indian Bank Jan08	214.7	206	201	6	63	1%
Infosys Technology Jan08	1732	1764	1718	11	51	9%
Indian Overseas Bk Jan08	203.4	194	184	7	69	7%
Indian Oil Corp Jan08	789.9	784	684	45	73	3%
ITC Limited Jan08	217	216	202	5	65	14%
IVR Prime Urban Jan08	455.9	461	457	9	54	7%
IVRCL Infrastructr Jan08	564	555	517	4	65	-3%
Jammu and Kashmir Jan08	934.95	901	861	19	69	-6%
Jindal Stainless Jan08	236	236	233	9	61	0%
Jet Airways India Jan08	1008	1010	970	35	59	-3%
Jaiprakash Hydro Pw Jan08	143	139	128	8	72	2%
Jaiprakash Associa Jan08	479	445	418	24	73	4%
Jindal Steel & Pwr Jan08	16500.7	15824	15277	757	66	0%
JSW Steel Limited Jan08	1340	1332	1266	73	68	-3%
Karnataka Bank Ltd Jan08	257.5	240	226	0	71	1%
Cummins India Ltd Jan08	408.2	415	414	1	46	0%
Kotak Mahindra Bk Jan08	1373	1342	1285	35	63	4%
Kesoram Industries Jan08	604	600	608	3	51	1%
Lanco Infratech Jan08	818	845	763	82	66	5%
Hotel Leela Jan08	75.55	74	69	3	67	3%
LIC Housing Financ Jan08	381	383	379	8	58	1%
Lakshmi Mach Works Jan08	3365	3394	3454	-10	46	2%
Lupin Ltd Jan08	624.5	634	612	15	56	0%
Larsen & Toubro Jan08	4109	4190	4223	-16	44	10%
Moser Baer India Jan08	334.45	309	299	4	69	36%
Maharashtra Ltd Jan08	631.5	633	608	24	64	2%
Mahindra & Mahindra Jan08	838.25	860	815	17	57	3%
Mphasis BFL Ltd Jan08	291.5	300	294	3	48	4%
Chennai Petroleum Jan08	429.95	431	425	10	56	1%
Mangalor Refinery Jan08	142.9	141	138	8	62	0%
Maruti Suzuki Jan08	984.2	1000	1028	-11	35	7%
Hjnduja Ventures Jan08	755	717	667	39	73	8%
Mahanagar Telephon Jan08	212.6	203	190	4	70	3%
National Aluminium Jan08	486	480	424	27	70	7%
NTPC Limited Jan08	274.7	258	247	0	70	6%
Nucleus Software Jan08	394.15	387	368	15	64	-3%
New Delhi Tel Ltd Jan08	472	473	436	22	68	-1%
Nagarjuna Fertiliz Jan08	83.9	84	82	3	57	2%
Nagarjuna Construc Jan08	360.1	363	347	8	59	4%
Neyveli Lignite Jan08	270.85	260	256	14	65	3%
Nicholas Piramal Jan08	354.1	359	350	12	54	3%
OMAXE Ltd Jan08	563	574	553	48	61	0%
Orientl Bnk Comrce Jan08	316.5	294	279	5	75	3%
Orchid Chemicals Jan08	296	298	267	7	66	7%

Oil & Nat Gas Corp Jan08	1303.5	1259	1210	5	64	5%
Parsvnath Dev Jan08	485.1	472	423	20	71	-1%
Patni Computer Sys Jan08	331	335	333	-5	43	1%
Patel Engineering Jan08	996	998	895	38	70	4%
Peninsula Land Ltd Jan08	155.7	147	146	3	61	17%
Pantaloon Retail Jan08	846	851	737	29	70	4%
Petronet LNG Ltd Jan08	119.25	112	110	2	68	1%
Punjab Natl Bank Jan08	710.2	692	669	20	66	2%
Polaris Software Jan08	126.5	127	124	3	59	1%
Power Finance Corp Jan08	278.7	270	265	1	62	7%
Praj Industries Jan08	247.8	248	241	10	57	0%
Punj Lloyd Limited Jan08	583.25	574	545	15	65	-3%
Puravankara Proj Jan08	439.2	451	457	5	47	5%
Ranbaxy Laboratory Jan08	428.75	429	417	1	57	1%
Reliance Capital Jan08	2708	2654	2530	90	66	8%
Reliance Comm Jan08	737	746	743	2	49	4%
Reliance Energy Jan08	2540	2320	2062	77	82	-3%
Reliance Industry Jan08	2930	2917	2887	9	55	1%
Rajesh Exports Jan08	883	901	917	3	44	-3%
Rolta India Ltd Jan08	767.7	742	729	2	62	2%
Rel Nat Resource Jan08	203.4	190	179	6	70	0%
RELIANCE PETROLEUM Jan08	234.6	230	226	1	60	3%
Sasken Comm Tech Jan08	345.85	342	322	10	67	-1%
Steel Authority Jan08	272.6	282	278	3	48	12%
State Bank India Jan08	2414.8	2420	2407	27	56	4%
Shipping Co India Jan08	319	318	278	8	69	-3%
Satyam Computr Srv Jan08	430.55	445	439	-1	43	7%
Sesa GOA Ltd Jan08	3830	3877	3762	60	56	-2%
Shree Renuka Sugar Jan08	1023.5	1031	933	61	67	1%
Siemens India Ltd Jan08	1929	1923	1926	3	53	9%
S Kumar Nationwide Jan08	162.6	165	160	4	56	1%
Sterling Biotech Jan08	178	178	169	2	63	2%
Syndicate Bank Jan08	126.5	122	117	4	67	-4%
Sobha Developers Jan08	968	943	925	5	61	4%
Sterlite Tech Jan08	335.7	339	349	9	50	2%
Shree Cement Ltd Jan08	1380	1374	1430	-13	42	0%
SRF Limited Jan08	200	191	186	9	67	4%
Sterlite Industry Jan08	1019	1043	1049	8	49	2%
Strides Arcolab Jan08	292.5	292	295	7	53	10%
Suzlon Energy Ltd Jan08	2014.05	1956	1935	-12	58	0%
Sun Pharmaceutical Jan08	1149.55	1200	1159	21	49	8%
Sun TV Ltd Jan08	408.2	412	402	17	59	6%
Tata Steel Limited Jan08	930.5	941	884	9	61	1%
Tata Consultancy Jan08	1021.55	1059	1054	10	43	17%
Tata Power Company Jan08	1614	1521	1370	40	79	17%

Triveni Engg & Ind Jan08	179.25	181	176	10	56	1%
Tata Tea Ltd Jan08	980	952	905	27	67	8%
Titan Industries Jan08	1558.05	1572	1535	-15	51	0%
Tata Chemicals Ltd Jan08	421.2	419	389	18	73	0%
Tata Teleservices Jan08	62.6	63	60	3	65	3%
Tata Motors Ltd Jan08	802.3	773	755	-1	62	7%
TVS Motor Company Jan08	72.3	73	72	2	54	6%
Union Bank India Jan08	230	221	206	6	73	-1%
United Spirits Ltd Jan08	2017	2012	1975	2	55	-1%
United Phosphorus Jan08	378.05	364	358	1	65	-11%
Unitech Ltd Jan08	524.65	512	469	24	73	9%
Ultra Tech Cement Jan08	993.05	1003	1001	-4	46	-2%
Vijaya Bank Jan08	94.1	91	88	3	64	-4%
Voltas Limited Jan08	255	251	250	7	58	-3%
Videsh Sanchar Nig Jan08	726.6	753	689	39	59	15%
Welspun Guj Jan08	460.5	463	456	17	60	0%
Wockhardt LTD Jan08	432	427	416	1	59	0%
Wipro Limited Jan08	494.05	517	508	9	46	17%
Financial Techno Jan08	2633	2653	2534	14	58	-3%
Yes Bank Ltd Jan08	263.5	259	253	4	62	-1%
Zee Telefilms Jan08	323.1	325	314	0	54	-2%

- IF THE SHORT-TERM MOVING AVERAGE (5-DAY) MOVES ABOVE THE LONG-TERM MOVING AVERAGE (20-DAY) THE SCRIP TURNS BULLISH AND IF IT MOVES BELOW THE SCRIP TURNS BEARISH.
- MACD POSITIVE INDICATES BULLISHNESS AND NEGATIVE INDICATES BEARISHNESS
- RSI ABOVE 70 IS OVERBOUGHT AND BELOW 30 IS OVERSOLD
- INCREASE IN OPENINTEREST INDICATES BUYING OR SELLING INTEREST IN THE COUNTER

## CALL TRACK:

No	Scrip Name	Date	Entered/Not access/Failur	Price	Target	Stoploss	Achieved Target	Next Day	%return
1	ABB	8/27/2007	E Success	1040	1070/1090	1020	1090		4.8%
2	HINDALCO	8/28/2007	E Success	150	153/156	148.5	154	156	4.0%
3	GTL	8/29/2007	NE	222	226/229	219.5		229	3.2%
4	HIND LEVER	8/30/2007	E Success	199	203/205	197	201	205	3.0%
5	ALSTOM PROJECTS	8/30/2007	E Success	750	800	735	775		3.3%
6	TATASTEEL	8/31/2007	NE	658	650/644	664			NE
7	DECCAN AVAITION	8/31/2007	E Success	138	140/142	137	142		2.9%
8	SIEMENS	9/3/2007	E sLtriggered	1266	1290/1315	1250	sLtriggered		-1.3%
9	UNITECH	9/3/2007	NE	235.5	230/227	237.5			NE
10	DLF	9/4/2007	E Success	617	625/634	611	629	634	2.8%
11	CAIRN	9/4/2007	E sLtriggered	152.5	156	151	sLtriggered		-1.0%
12	DLF	9/5/2007	E Success	630	639/649	624	639		1.4%
13	MARUTI	9/6/2007	NE	868	855/845	875			NE
14	MTNL	9/6/2007	E Success	145	148	144	147	148	2.1%
15	CAIRN	9/7/2007	E Success	153.5	158	152	155.5	158	2.9%
16	GTL	9/10/2007	E	242	248	240	248		2.5%
17	i-FLEX	9/10/2007	NE	1965	1940	1980			NE
18	GRASIM	9/11/2007	E Oncourse	3200	3265/3300	3170	3224		0.8%
19	ZEE TELE	9/11/2007	E SLtriggered	307	311/313	305			-0.7%
20	JINDAL STAINLESS	9/12/2007	E Success	162	165/168	160	164		1.2%
21	DLF	9/13/2007	E Success	640	650/660	634		660	3.1%
22	GDL	9/14/2007	Gapup	136	138/140	134.5			NE
23	HDFCBANK	9/17/2007	NE	1250	1280/1300	1230			NE
24	PENINSULA LAND	9/18/2007	E SLtriggered	552	570/580	545	sLtriggered		-1.27%
25	PATNI COMPUTERS	9/19/2007	E Success	455	460/470	450	470		3.30%
26	CAIRN	9/20/2007	E Success	169	173/176	167	176		4.14%
27	GTL	9/21/2007	E sLtriggered	243	246/250	241	sLtriggered		-0.82%
28	CUMMINS	9/24/2007	E Success	430	437/443	425	437	440	1.63%
29	GE SHIPPING	9/25/2007	E sLtriggered	339	347	336	sLtriggered		-0.88%
30	BALRAMPUR CHINI	9/26/2007	E Success	83	87/90	81	86.35		4.04%
31	ICICI BANK	9/27/2007	NE	1045	1070	1032			NE
32	TATASTEEL	9/28/2007	E Success	803	820	795	820		2.12%
33	DLF	10/1/2007	E sLtriggered	772	790	763	sLtriggered		-1.17%
34	RELIANCE PETROLEUM	10/3/2007	E Success	163	170	160	167		2.45%
35	BHEL	10/4/2007	E Success	2090	2170	2060	2125	2170	3.83%
36	SIEMENS	10/5/2007	E Success	1450	1475/1500	1435	1474		1.66%
37	SATYAM	10/9/2007	E Success	460	465/470	455	470		2.17%
38	INFOSYS	10/10/2007	E Success	2060	2100	2040	2100		1.94%
39	TCS	10/11/2007	NE	1133	1165	1120			NE
40	M & M	10/12/2007	E Success	833	860	820	850		2.04%
41	ABB	10/15/2007	NE	1375	1349	1387			NE
42	ICICI BANK	10/16/2007	E Success	1105	1130	993	1130		2.26%
43	SUZLON	10/18/2007	E sLtriggered	1820	1880	1790	sLtriggered		-1.65%
44	ABAN OFFSHORE	10/19/2007	E Success	3950	3800	3990	3800		3.80%
45	ABB	10/22/2007	E Success	1380	1340	1400	1340		2.90%
46	RAJESH EXPORTS	10/23/2007	E Success	900	920/935	890	935		3.89%
47	INFOSYS	10/25/2007	E sLtriggered	1840	1800/1785	1865	sLtriggered		-1.36%
48	AIA ENGINEERING	10/26/2007	E Success	1300	1350/1370	1270	1370		5.38%
49	INFOSYS	10/29/2007	E Success	415	435	410	424		2.90%
50	ABB	10/30/2007	E Success	1500	1550	1475	1550		3.33%

51	DLF	31 10 2007	E	Success	980	1000/1025	965	995.7	2.90%	
52	HDIL	01 11 2007	E	Success	680	700/720	665	715	5.15%	
53	ACC	02 11 2007	E	Success	1049	1018/990	1060	1012.6	3.47%	
54	PETRONET LNG	05 11 2007	E	Success	91	93/95	89.5	95	4.40%	
55	BIRLA CORPORATION	06 11 2007	NE		308	302/299	312		NE	
56	RELIANCE CAPITAL	07 11 2007	E	Success	1845	1810/1790	1865	1794	2.76%	
57	ABB	12 11 2007	E	Success	1560	1510	1585	1511	3.14%	
58	ROLTA	13 11 2007	E	Success	675	655	685	661.5	2.00%	
59	ABB	14 11 2007	E	Success	1620	1670	1595	1650	1.85%	
60	GAIL	15 11 2007	E	Success	455	470	449	467.35	2.71%	
61	TATA POWER	16 11 2007	E	sl.triggered	1240	1200	1260	sl.triggered	-1.36%	
62	ABAN OFFSHORE	21 11 2007	E	Success	5090	4875	5200	4875	4.22%	
63	HCL TECHNOLOGIES	22 11 2007	E	Success	286	292/295	283	292	2.10%	
64	GMR INFRA	23 11 2007	E	Success	239	245	236	244	2.09%	
65	ORCHID CHEMICALS	26 11 2007	E	sl.triggered	245	250	242	sl.triggered	-1.22%	
66	INDIA CEMENTS	27 11 2007	NE		306	312	303		NE	
67	BATA INDIA	28 11 2007	E	Success	235	230	237	230	2.13%	
68	ZEE TELE	29 11 2007	E	Success	295	289	298	289	2.03%	
69	STERLITE INDUSTRIES	30 11 2007	E	Success	945	995	937	995	5.29%	
70	YES BANK	03 12 2007	E	Oncourse	236	242	233	242	242	2.54%
71	DENA BANK	03 12 2007	E	Success	83	85	82	85	2.41%	
72	IDEA	04 12 2007	E	Oncourse	127	133/135	125	129.5	1.97%	
73	NAGARJUNA CONSTRUCTION	05 12 2007	E	Success	335	350/360	330	354	5.67%	
74	TRIVENI ENGINEERING	05 12 2007	E	Success	142	150	140	149.3	5.14%	
75	RELIANCE PETROLEUM	06 12 2007	E	Success	230	245	225	239.65	4.20%	
76	PATNI COMPUTERS	06 12 2007	E	Success	334	360	327	340	1.80%	
77	ACC	07 12 2007	E	Success	1080	1045	1095	1062	1.67%	
78	ACC	10 12 2007	E	sl.triggered	1070	1035	1085	sl.triggered	1.40%	
79	BAJAJ HINDUSTAN	10 12 2007	E	Oncourse	243	255	240	sl.triggered	-1.23%	
80	ABB	11 12 2007	NE		1600	1550	1620		NE	
81	TATA STEEL	12 12 2007	E	Success	855	885	845	875	2.34%	
82	NTPC	13 12 2007	NE		254	265	250		NE	
83	KARNATAKA BANK	13 12 2007	E	Success	230	240	227	237.65	3.33%	
84	TITAN	14 12 2007	NE	Success	1475	1445	1490		NE	
85	AMBUJA CEMENTS	17 12 2007	E	sl.triggered	151.5	158	150		-0.99%	
86	ADLABS FILM	19 12 2007	E	Success	1355	1430	1335	1430	5.54%	
87	ARVIND MILLS	20 12 2007	NE		82.5	86/88	81		NE	
88	SAIL	24/12/2007	E	Success	270	276/280	267	273.3	1%	
89	CAIRN INDIA	26 12 2007	E	Success	234	244	229	243	4%	
90	CROMPTON GREAVES	27 12 2007	E	Success	396	405	392	401	1.26%	
91	IDEA	28 12 2007	NE		134	139	132		NE	
92	ABAN OFFSHORE	31 12 2007	E	Success	4900	5000	4850	5000	2.04%	
93	GAIL	01 01 2008	E	Success	550	565	544	561	2.00%	
94	DECCAN AVIATION	02 01 2008	E	Success	290	297/300	286	293.4	1.17%	
95	HINDALCO	03 01 2008	NE		223	230	220		NE	

**Total return till date=172.60%.**

**Disclaimer** The information contained in this report has been obtained from sources believed to be reliable. While utmost care has been taken to create this report, the author or the organization does not take any responsibility for the consequences of this report. Investors who invest on the basis of recommendations mentioned in this report do so at their own risk.