

June 14, 2007
FOR PRIVATE CIRCULATION ONLY
Sundar Parasuraman
 sundar.parasuraman@kotak.com
 +91 22 6610 6625

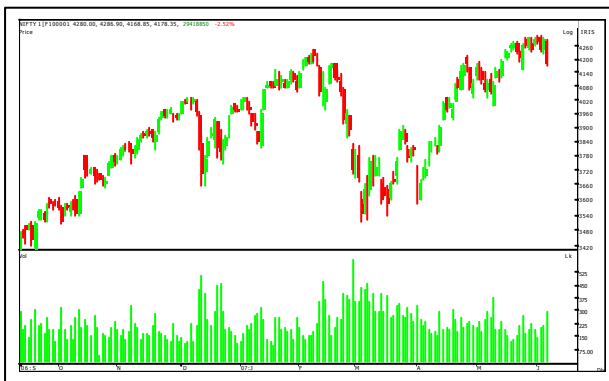
Brief overview

- Global Markets induced our index downwards to close with a loss of 1.23%. Nifty opened flat and kept losing ground gradually. The discount in nifty is seen at 22 points indicating a bearish sentiment still remains. Maximum activity was seen in the June 4100 Call and Put options.
- Heavy weights witnessed selling at higher levels. Reliance, RCOM, SAIL, SBI and LT closed with significant losses. Technology has not participated in the volatility and continues to be rather stable.
- Midcap index has not witnessed volatility as was seen in the past. Leveraged positions in the same are at comfortable levels. Aban offshore and Divis Lab have outperformed the market and continued to gain in today's trading session. On the other hand stocks like ABNuvo and IDFC dragged were also seen in the red.

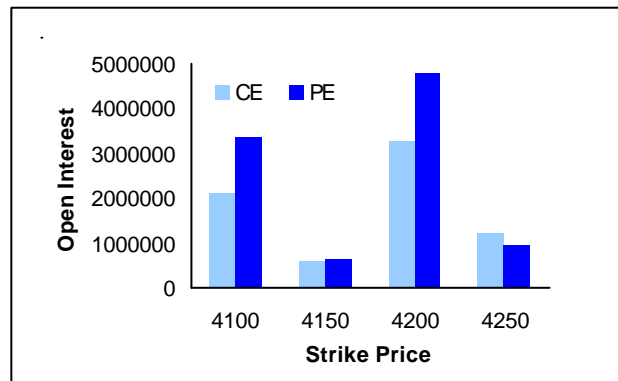
Nifty analysis

- The open interest was seen crossing 4cr during the day's trade, the COC remaining in a discount. It is likely to keep the volatility high.
- On the downside support for nifty is seen at 4030/4000 while a move past 4200 is necessary to lend stability to the market.

Nifty price chart



Nifty options OI chart



TRADING CALL

STOCK NAME	CMP	STOP LOSS	TARGET	COMMENT
NIL				

Future statistics

TOP OI RISES

SCRIP	% OI	OI	PRICE CHANGE (%)
CROMPGREAV	18.09	679,000	-0.71
ANSALINFRA	15.70	1,255,150	-2.67
ABAN	15.16	776,200	3.05
MARUTI	14.77	2,915,600	-0.09
ICICIBANK	12.03	8,372,000	-0.81
ABB	11.52	311,700	-2.89
BRFL	11.50	7,000,050	-3.51
BALRAMCHIN	11.08	13,238,400	-1.38
WIPRO	10.96	6,723,000	-1.58

TOP OI FALLS

SCRIP	% OI	OI	PRICE CHANGE (%)
PATELENG	-8.68	510,500	0.33
UNIPHOS	-7.91	668,500	1.07
KESORAMIND	-6.75	780,000	-3.30
PARSVNATH	-6.16	6,486,900	1.48
LITL	-4.71	3,165,400	3.07
ACC	-3.34	2,062,500	-1.26
INDIAINFO	-3.01	1,191,000	-0.11
TITAN	-2.49	1,178,526	5.85
ROLTA	-2.36	1,339,200	1.75

Option statistics

MOST ACTIVE CALLS

SCRIP	NO OF TRADES	FUTURES PRICE	OI	STRIKE
RELIANCE	2,313	1,670	373,050	1,710
RELIANCE	914	1,670	211,800	1,680
TATASTEEL	764	594	429,300	600
RELIANCE	749	1,670	310,050	1,740
RELIANCE	695	1,670	549,600	1,800
TATASTEEL	682	594	564,300	620
IDBI	673	97	2,558,400	100
SBIN	643	1,281	194,750	1,350

MOST ACTIVE PUTS

SCRIP	NO OF TRADES	FUTURES PRICE	OI	STRIKE
RELIANCE	443	1,670	78,900	1,710
RELIANCE	356	1,670	68,400	1,680
RELIANCE	312	1,670	136,500	1,650
TATASTEEL	268	594	189,675	600
SBIN	228	1,281	80,000	1,320
INFOSYSTCH	172	1,990	54,900	1,920
TATASTEEL	148	594	162,675	580
IDBI	125	97	470,400	95

Cash statistics

MOST ACTIVELY TRADED

SCRIP	TOTAL TRADED QUANTITY	TRADED VALUE	LTP
RELIANCE	2,240,665	37,837	1,675
TATASTEEL	4,438,253	26,868	597
SATYAMCOMP	4,845,524	23,495	487
SBIN	1,537,559	20,106	1,290
LT	1,050,836	19,842	1,868
RELCAPITAL	1,795,608	17,496	971
UNITECH	3,347,741	16,714	493
RCOM	3,315,857	16,276	486
INFOSYSTCH	767,901	15,255	1,989
ICICIBANK	1,264,751	11,659	914

TOP PRICE CHANGES

SCRIP	PRICE CHANGE (%)	OI CHANGE (%)	OI
TITAN	5.85	-2.49	1,178,526
GTL	3.71	6.20	7,651,500
ORCHIDCHEM	3.13	1.11	7,716,450
LITL	3.07	-4.71	3,165,400
ABAN	3.05	15.16	776,200
BINDALAGRO	2.45	0.30	16,780,500
GNFC	2.30	0.37	4,003,150
DRREDDY	2.23	-1.91	5,462,000
AIRDECCAN	2.13	5.99	4,783,800
NICOLASPIR	2.11	5.83	777,480

FII data

DERIVATIVES (VALUE IN CRS)

	BUY	SELL	OPEN INTEREST
IndexFutures	1,298.19	2,146.77	16,859.33
Index Options	297.40	160.31	6,807.34
Stock Futures	422.00	871.07	19,471.08
Stock Options	0.02	0.10	36.55

EQUITY

REPORTING DATE	DEBT/EQUITY	GROSS PURCHASES	GROSS SALES	NET INVESTMENT
13-Jun-07	Equity	1,706.7	2,000.9	(294.2)

TRADERS GUIDE

STOCK NAME	CMP	SUPPORT	RESISTANCE	COMMENT
NIL				

Derivatives Research team

Name	Sector	Tel No	E-mail id
Sundar Parasuraman	Quantitative analysis	+91 22 6610 6625	sundar.parasuraman@kotak.com
Sahaj Agrawal	Derivative analysis	+91 22 6610 6625	sahaj.agrawal@kotak.com
K. Kathirvelu	Production	+91 22 6634 1557	k.kathirvelu@kotak.com

Disclaimer

This document is not for public distribution and has been furnished to you solely for your information and must not be reproduced or redistributed to any other person. Persons into whose possession this document may come are required to observe these restrictions.

This material is for the personal information of the authorized recipient, and we are not soliciting any action based upon it. This report is not to be construed as an offer to sell or the solicitation of an offer to buy any security in any jurisdiction where such an offer or solicitation would be illegal. It is for the general information of clients of Kotak Securities Ltd. It does not constitute a personal recommendation or take into account the particular investment objectives, financial situations, or needs of individual clients.

We have reviewed the report, and in so far as it includes current or historical information, it is believed to be reliable though its accuracy or completeness cannot be guaranteed. Neither Kotak Securities Limited, nor any person connected with it, accepts any liability arising from the use of this document. The recipients of this material should rely on their own investigations and take their own professional advice. Price and value of the investments referred to in this material may go up or down. Past performance is not a guide for future performance. Transactions involving futures, options and other derivatives involve substantial risk and are not suitable for all investors. Reports based on technical analysis centers on studying charts of a stock's price movement and trading volume, as opposed to focusing on a company's fundamentals.

Opinions expressed are our current opinions as of the date appearing on this material only. While we endeavor to update on a reasonable basis the information discussed in this material, there may be regulatory, compliance, or other reasons that prevent us from doing so. Prospective investors and others are cautioned that any forward-looking statements are not predictions and may be subject to change without notice. Our proprietary trading and investment businesses may make investment decisions that are inconsistent with the recommendations expressed herein. Kotak Securities has two independent equity research groups: Institutional Equities and Private Client Group. This report has been prepared by the Private Client Group. The views and opinions expressed in this document may or may not match or may be contrary with the views, estimates, ratings, and target price of the Institutional Equity Research Group of Kotak Securities Limited.

We and our affiliates, officers, directors, and employees world wide may: (a) from time to time, have long or short positions in, and buy or sell the securities thereof, of company (ies) mentioned herein or (b) be engaged in any other transaction involving such securities and earn brokerage or other compensation or act as a market maker in the financial instruments of the company (ies) discussed herein or act as advisor or lender or borrower to such company (ies) or have other potential conflict of interest with respect to any recommendation and related information and opinions. Kotak Securities Limited generally prohibits its analysts from maintaining financial interest in the securities or derivatives of any of the companies that the analysts cover. The analyst for this report certifies that all of the views expressed in this report accurately reflect his or her personal views about the subject company or companies and its or their securities, and no part of his or her compensation was, is or will be, directly or indirectly related to specific recommendations or views expressed in this report.

No part of this material may be duplicated in any form and/or redistributed without Kotak Securities' prior written consent.

Registered Office: Kotak Securities Limited, Bakhtawar, 1st floor, 229 Nariman Point, Mumbai 400021 India.