

WEEKLY | TECHNICAL



OUR REPORTS

Fundamental

Company Report
Sector Report
Theme Based Report

Daily & Weekly

Fundamental Market Update
Technical Market Update
Derivative Market Update

Fortnightly

Banking Sector Report
Currency Report

Monthly

India Strategy Report
IIP Report
Auto Sector Update
Cement Sector Update
Metal Sector Update
Telecom Sector Update
Insurance and Mutual Fund Report
Inflation Report
Exports-Imports Report

Quarterly

India and Global Strategy Report
India Economy Report

Others

Event Based Report
RBI Monetary Review Report
Annual Budget Review Report

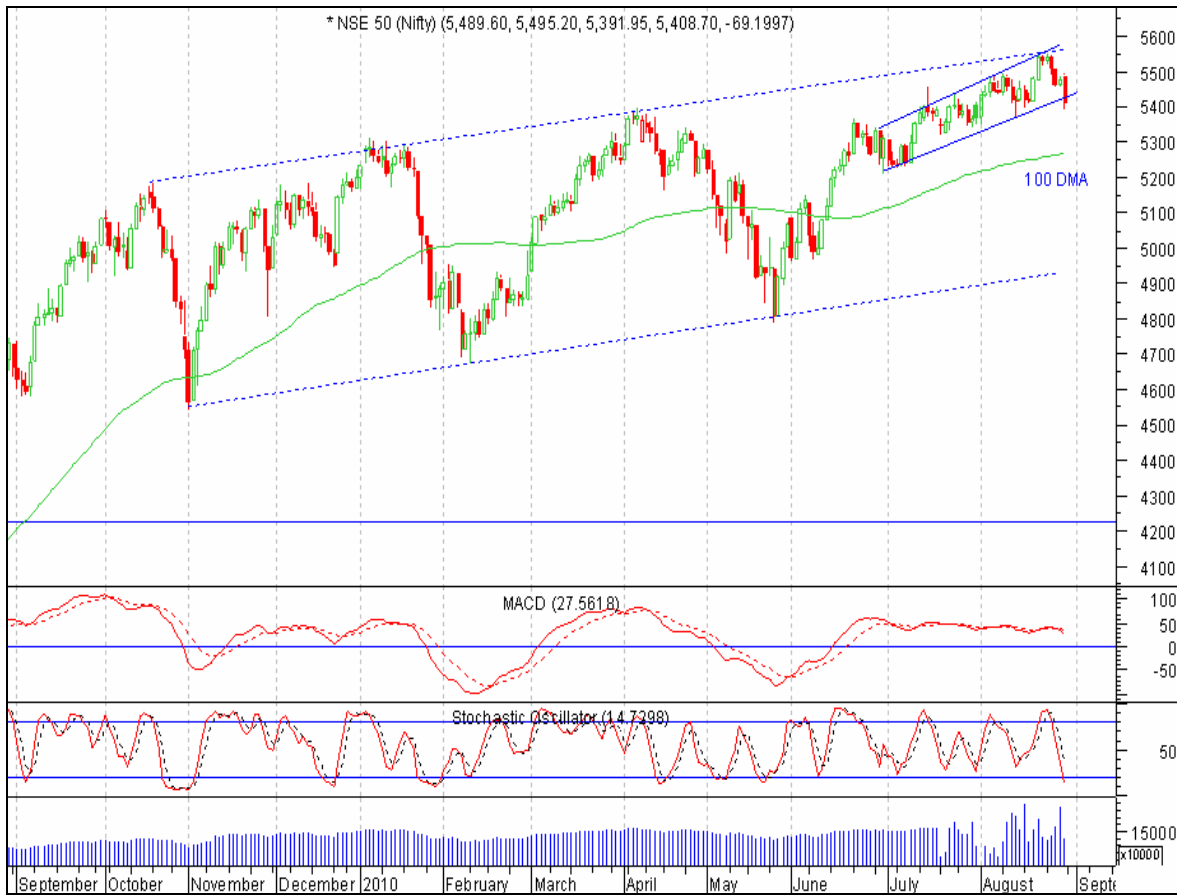
August 28, 2010

Vinit Pagaria, ACA, FRM
Ranjit Kumar Saha

E-mail: vpagaria@microsec.in
E-mail: rksaha@microsec.in

Weekly Report

NIFTY DAILY CHART



Nifty(5408.70)

Resistance levels

Resistance 1: 5450

Resistance 2: 5490

Resistance 3: 5550

Support levels

Support 1: 5350

Support 2: 5300

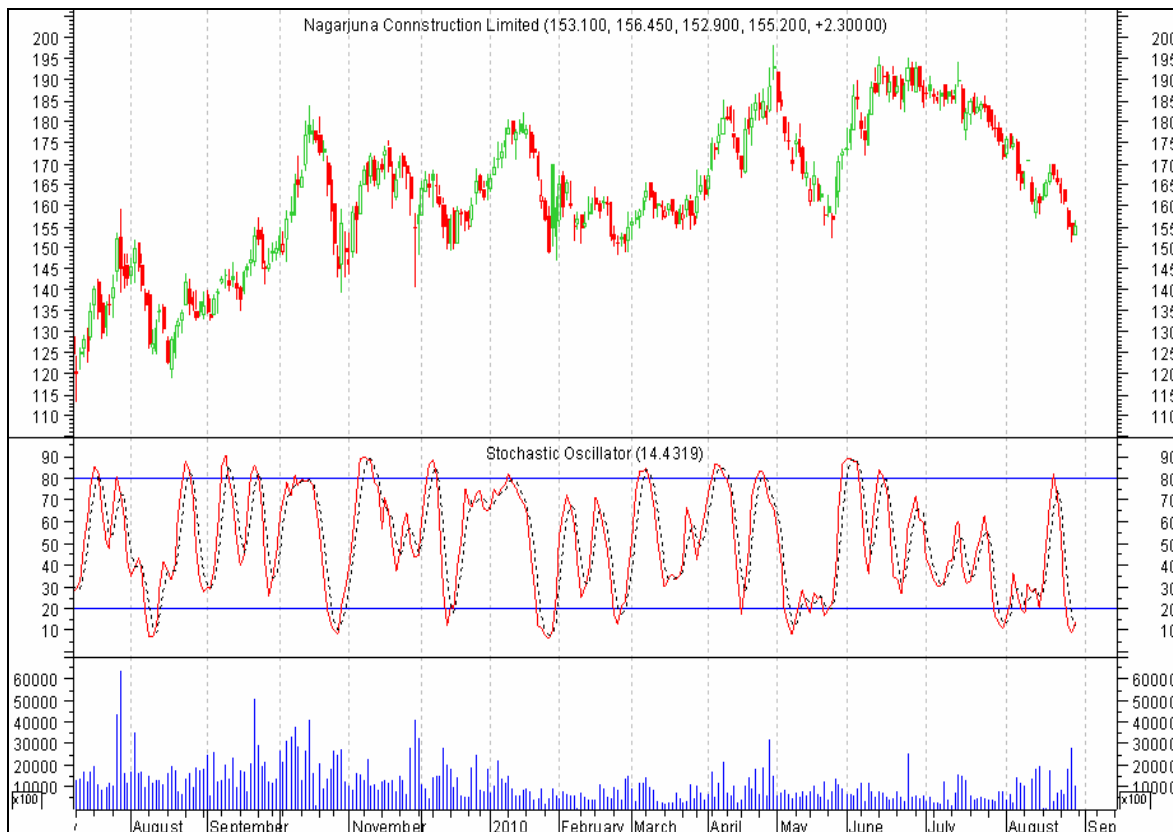
Support 3: 5260

NIFTY LIKELY TO MOVE IN THE RANGE OF 5300-5550

Last week Nifty started with a green session. However, from the second day of the week it continuously fell to make a low of 5391.95. At last Nifty ended the week with a loss of 2.20% over the previous week's close. In the coming week Nifty is likely to move in the range of 5300 and 5550.

PICK OF THE WEEK

NAGARJUNA CONSTRUCTION LIMITED (CMP: RS. 155.20)



ACCUMATION LEVEL	TARGET 1	TARGET 2	STOP LOSS	TIME FRAME
152-155	145	166	173	1 to 2 weeks

BSE SECTORAL INDICES		
WEEKLY TOP FIVE GAINERS		
SECTORS	CURRENT VALUE	% CHANGE
CD	5772.48	1.42
-	-	-
-	-	-
-	-	-
-	-	-

BSE SECTORAL INDICES		
WEEKLY TOP FIVE LOSERS		
SECTORS	CURRENT VALUE	% CHANGE
REALTY	3379.98	(8.53)
METAL	14910.82	(3.34)
BANKEX	12216.07	(2.49)
IT	5408.36	(1.97)
AUTO	8710.05	(1.86)

MARKET MOVERS		
WEEKLY NIFTY GAINERS		
COMPANY	CLOSE	% CHANGE
BPCL	776.40	11.12
ONGC	1318.20	4.70
BHARTIARTL	316.10	1.87
NTPC	196.45	1.66
POWERGRID	104.35	1.11

MARKET MOVERS		
WEEKLY NIFTY LOSERS		
COMPANY	CLOSE	% CHANGE
UNITECH	77.05	(9.46)
HINDALCO	164.00	(8.15)
RELINFRA	983.15	(8.14)
DLF	306.85	(8.07)
HEROHONDA	1785.75	(6.79)

WORLD MARKETS WEEKLY PERFORMANCE		
INDEX	CLOSE	% CHANGE
NIFTY	5408.70	(2.20)
SENSEX	17998.41	(2.19)
DOW JONES	10150.65	(0.62)
S&P 500 INDEX	1064.59	(0.66)
NASDAQ COMPOSITE	2153.63	(1.20)
FTSE 100 INDEX	5201.56	0.12
CAC 40 INDEX	3507.44	(0.53)
DAX INDEX	5951.17	(0.90)
NIKKEI 225	8991.06	(2.05)
HANG SENG INDEX	20597.35	(1.83)
SHANGHAI SE COMPOSITE	2610.74	(1.19)
KOSPI INDEX	1729.56	(2.59)

After opening on a positive note, Nifty rose to make 30 months' high of 5549.80 on the same day. However from the last Tuesday it continuously fell to make a low of 5391.95. At last Nifty closed at 5408.70. It had a net loss of 121.95 points or 2.20% over the previous week's close. The selling was witnessed across the board. However, Realty, Metal and Banking sectors lead to a decline.

The daily chart of Nifty is showing that it has broken its curtail support of 5410 on last Friday. So we expect the downward movement will continue to 5350 and then 5300. However if Nifty is able to sustain above 550, it may test the level of 5680 in the short term.

For the coming week, first support of Nifty lies at 5350 and the resistance is 5450. If Nifty breaks 5350, it may further go down to 5300 and then 5260. However, if Nifty is able to sustain above 5450, the level of 5490-5550 would become the next target.

Intra-day calls - 16th August to 27th August

Total Number of Calls: 54

Target Achieved: 24 S/L Triggered: 16 No Result: 14

Date	SI	Scrip	B/S	Price	S/L	Target1	Target2	Closed at	Result	Profit
8/16/2010	1	DABUR	BUY	201.75	199	204	207	201.25	Closing Price	-248
8/16/2010	2	LITL	BUY	69.7	67	72	74	71.8	Target1 Achieved	3013
8/16/2010	3	PFC	BUY	338.5	334	343	347	338.95	Closing Price	133
8/17/2010	4	PFC	BUY	340	335	345	348	335	S/L Triggered	-1471
8/17/2010	5	SIEMENS	BUY	712	703	719	728	707.95	Closing Price	-569
8/17/2010	6	GAIL	BUY	556	550	561	567	550	S/L Triggered	-1079
8/17/2010	7	YES BANK	BUY	325.5	322	328	331	328	Target1 Achieved	768
8/17/2010	8	JUBLFOOD	SELL	450.5	456	445	440	449.8	Closing Price	155
8/18/2010	9	ABAN	BUY	803	795	813	820	795	S/L Triggered	-996
8/18/2010	10	HDIL	BUY	290.5	286	294	297	294	Target1 Achieved	1205
8/18/2010	11	GATI	BUY	81.25	77	85	89	85	Target1 Achieved	4615
8/18/2010	12	APOLLOTYRE	BUY	67.8	66	69.5	71	69.4	Target1 Achieved	2360
8/18/2010	13	IDFC	BUY	183	181	185	187	183.05	Closing Price	27
8/18/2010	14	SKFINDIA	BUY	590	580	598	604	580	S/L Triggered	-1695
8/18/2010	15	INDUSIND BANK	BUY	227.5	224	230	233	228.05	Closing Price	242
8/18/2010	16	TCS	BUY	863	854	872	884	872	Target1 Achieved	1043
8/19/2010	17	WIPRO	BUY	422.5	418	427	432	418	S/L Triggered	-1065
8/19/2010	18	VIDEOIND	BUY	247	244	250	253	249.85	Target1 Achieved	1154
8/19/2010	19	IRB INFRA	BUY	296	293	299	302	293	S/L Triggered	-1014
8/19/2010	20	VOLTAS	BUY	208	205	210	213	205	S/L Triggered	-1442
8/19/2010	21	PIRHEALTH	BUY	505	498	511	518	499.85	Closing Price	-1020
8/20/2010	22	CIPLA	BUY	308	304	311	314	311	Target1 Achieved	974
8/20/2010	23	M&M	BUY	617	608	624	630	617.7	Closing Price	113
8/20/2010	24	GMDC	BUY	125	122	128	131	124.7	Closing Price	-240
8/20/2010	25	DLF	BUY	329	324	334	339	334	Target1 Achieved	1520
8/20/2010	26	STER	BUY	161	158	163.5	166	159.8	Closing Price	-745
8/23/2010	27	CIPLA	BUY	314	310	317	321	317	Target1 Achieved	955
8/23/2010	28	HDIL	BUY	299	294	302	306	294	S/L Triggered	-1672
8/23/2010	29	LAKSHMIVILAS BANK	BUY	127.5	125	130	132	132	Both Targets Achieved	3529
8/23/2010	30	SUNTV	BUY	502	496	508	513	496	S/L Triggered	-1195
8/23/2010	31	BHARTI AIRTEL	BUY	312.5	309	316	320	320	Both Targets Achieved	2400
8/23/2010	32	VIDEOIND	BUY	252	249	255	258	258	Both Targets Achieved	2381
8/23/2010	34	LICHSGFIN	BUY	1260	1250	1270	1278	1250	S/L Triggered	-794
8/24/2010	35	PFC	BUY	346	342	349.5	354	342	S/L Triggered	-1156
8/24/2010	36	ABIRLANUVO	BUY	848	840	856	863	856	Target1 Achieved	943
8/24/2010	37	TCS	BUY	876	868	883	891	881.9	Target1 Achieved	674
8/24/2010	38	IVRCLINFRA	BUY	164.5	162	166.5	169	162	S/L Triggered	-1520
8/25/2010	39	CENTURY TEXTILES	SELL	505.5	511	501	495	495	Both Targets Achieved	2077
8/25/2010	40	OPTOCIRCUIT	BUY	281	278	284	287	280	Lower exit	-356
8/25/2010	41	Central Bank	BUY	181.5	179	184	186	179	S/L Triggered	-1377
8/25/2010	42	BHUSHAN STEEL	SELL	1818	1832	1804	1795	1832	S/L Triggered	-770
8/25/2010	43	SESAGOA	BUY	324	320	327	331	327	Target1 Achieved	926

8/25/2010	44	UCOBANK	BUY	111.5	109	113.5	116	110.45	Closing Price	-942
8/26/2010	45	GLENMARK	BUY	289	286	292	295	292	Target1 Achieved	1038
8/26/2010	46	HCLTECH	BUY	418	413	422	427	421.65	Target1 Achieved	873
8/26/2010	47	UNIONBANK	BUY	348	343	353	357	353	Target1 Achieved	1437
8/26/2010	48	ORCHIDCHEM	BUY	189	186	192	195	192	Target1 Achieved	1587
8/27/2010	49	TATAMOTORS	BUY	1001.5	994	1010	1016	1010	Target1 Achieved	849
8/27/2010	50	ITC	BUY	163	161	165	167	165	Target1 Achieved	1227
8/27/2010	51	DENA BANK	BUY	105.7	103.5	108	109.5	103.85	Closing Price	-1750
8/27/2010	52	OPTOCIRCUIT	BUY	286	283	289	292	289	Target1 Achieved	1049
8/27/2010	53	FORTIS	BUY	157.5	155	160	162	155	S/L Triggered	-1587
8/27/2010	54	NIFTY SEPT. FUT	BUY	5464	5438	5488	5508	5438	S/L Triggered	-476

Total Profit → 14089/-

Note: 1. The profit is calculating assuming that each trade is worth Rs 1 lac

*Past Performance is no guarantee of future returns

Disclaimer

The investments discussed or recommended in this report may not be suitable for all investors. Investors should use this research as one input into formulating an investment opinion. Additional inputs should include, but are not limited to, the review of other. This is not an offer (or solicitation of an offer) to buy/sell the securities/instruments mentioned or an official confirmation. Microsec Capital Limited is not responsible for any error or inaccuracy or for any losses suffered on account of information contained in this report. This report does not purport to be offer for purchase and sale of share/ units. We and our affiliates, officers, directors, and employees, including persons involved in the preparation or issuance of this material may: (a) from time to time, have long or short positions in, and buy or sell the securities thereof, of company (ies) mentioned herein or (b) be engaged in any other transaction involving such securities and earn brokerage or other compensation discussed herein or act as advisor or lender / borrower to such company (ies) or have other potential conflict of interest with respect to any recommendation and related information and opinions. The same persons may have acted upon the information contained here. No part of this material may be duplicated in any form and/or redistributed without Microsec Capital Limited' prior written consent.