

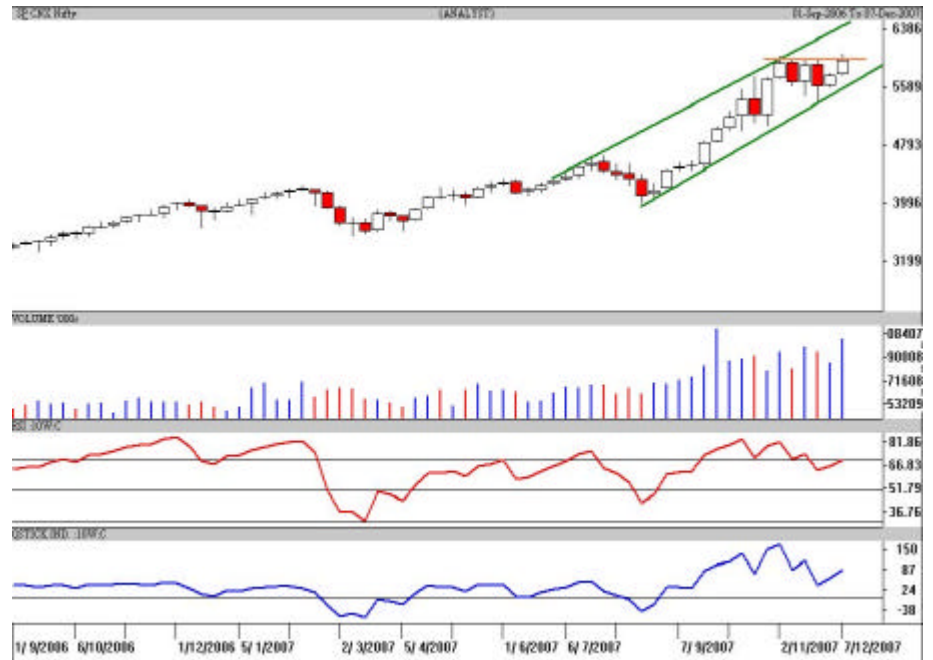
NIFTY	5974.30
Intra Week	
Volatility	331 pts
S1	5864.45
S2	5665.77
R1	6092.73
R2	6151.95

SENSEX	1996.00
Intra Week	
Volatility	900 pts
S1	19576.94
S2	19187.87
R1	20224.81
R2	20483.63

TREND	Direction
Short Term	SW
Medium Term	UP
Long Term	UP

AVERAGES	
Weekly	
05 sma	5783.15
08 sma	5720.72
13 sma	5442.83

NIFTY Monthly	
S1	5434.04
S2	5269.75
R1	5976.00
R2	6258.45



Source: Analyst

S&P Nifty (5974.30 points)

(+211.55 pts)

Last week, the Bulls were in control as the Heavy weights supported the Indices in rotation. On the backdrop of which the Nifty scaled a new all time high but the BSE Sensex is struggling near its intermediate top at 19987 points. Yesterday, Infosys, HDFC were moving up as they have more weightages in the BSE Sensex. The rise should be a smooth with everybody moving in tandem. As this did not happen it leaves an element of doubt to the previous week's gain of 3.67%.

The 6037 and 6088 points are the hurdles in the Nifty the Bulls need to negotiate during its up move. Immediate trend line support (daily charts) is pegged at 5857 points while the support line in green is at 5723 points. The Nifty has closed near the crucial level of 5976 points. Henceforth, it has to sustain above it otherwise chances of some Bull liquidation is likely.

Immediate resistance is pegged in the 6080-6119 points' area with an intermediate bottleneck at 6037 points. The pivot is at 5964 points with support at 5905-5920 points. As anticipated, the movement in the IT and Healthcare sector was overwhelming. Banking and Metals continue to lead from the front. Despite of all this, the Indices are failing to cross their previous high's decisively. Traders need to be cautious keeping in mind the above levels. With the Bears hunting for an opportunity, the Bulls have to rejuvenate themselves quickly to prove their supremacy.

Technical recommendations

Binani Ind (500059)

Buy for Short term

CMP:236.60

Tgt:253 & 270



The weekly candlestick chart of Binani Ind shows that it is facing resistance from the trendline in pink. The oscillators are above the median line and the volumes have also picked up hence one more attempt to break above is likely. Buy in declines around Rs230-233 with a strict stop loss at Rs220 in close for a target of Rs253 in the next 4-5 trading sessions and Rs.270-275 in the coming 3-4 weeks.

**Avoid gap openings and trade in small quantities.*

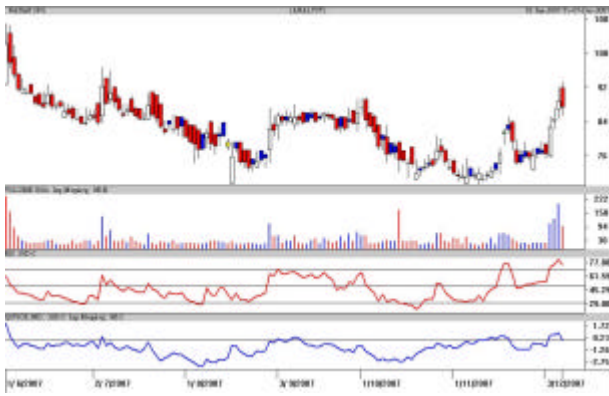
Source: Analyst

Nahar Spg (500296)

Buy in Declines

CMP: 88.25

Tgt: 97-98 & 105



The daily candlestick chart of Nahar Spg shows that after a breakout above Rs.85-88 it has given a pullback. The rise is on higher volumes which indicate that it has the potential for upsides. Buy in declines around Rs.86 with a strict stop loss below Rs.82 in close for a target of Rs.97-98 in the next 7-8 days which if sustained Rs.105-108 in the coming 3-4 weeks.

Avoid gap openings and trade in small quantities.

Source: Analyst

Intra-Week Range for 10-Dec-2007 to 14-Dec-2007

Scrip	Close	R1	R2	S/R	S2	S1
A.C.C.	1064.70	1117.45	1170.25	1066.20	962.15	1013.40
ABB LTD.	1606.05	1644.80	1683.50	1601.40	1519.30	1562.70
BHARTI TELE	959.65	1000.10	1040.55	955.05	869.55	914.60
BHEL	2743.05	2844.40	2945.70	2768.70	2591.70	2667.40
BOM DYEING	725.00	777.10	829.25	745.05	660.85	692.90
CENTURY TEXT	1106.45	1148.30	1190.15	1122.15	1054.15	1080.30
HIND.LEVER	208.35	213.15	217.95	206.70	195.45	201.90
ICICI BANK	1247.50	1287.90	1328.35	1209.45	1090.55	1169.00
INFOSYS TECH	1718.15	1766.80	1815.40	1678.40	1541.40	1629.80
ITC LTD.	188.90	196.25	203.55	190.90	178.25	183.60
LARSEN & TOU	4261.35	4385.75	4510.10	4260.65	4011.20	4136.30
MAHA.TELE	177.35	185.70	194.10	178.60	163.10	170.20
MARUTIUDYOG	1042.25	1067.80	1093.30	1036.40	979.50	1010.90
ONGC CORPN	1190.15	1243.40	1296.70	1196.70	1096.70	1143.40
PUNJ LLOYD	504.10	530.00	555.85	511.10	466.35	485.25
RANBAXY LAB.	407.25	416.10	424.95	400.55	376.15	391.70
REL COM LTD	734.30	766.70	799.05	722.65	646.25	690.30
REL.CAP.	2398.95	2508.65	2618.40	2415.25	2212.10	2305.50
RELIANCE	2841.65	2932.40	3023.20	2869.20	2715.20	2778.40
SATYAM COM	443.75	451.60	459.50	443.05	426.60	435.15
SIEMENS LTD.	1933.90	1998.50	2063.15	1914.25	1765.35	1849.60
STATE BANK	2436.60	2493.70	2550.85	2397.85	2244.85	2340.70
STEEL AUTH.	274.20	291.10	307.95	275.55	243.15	258.70
STERLITE IN	1095.85	1144.90	1193.90	1091.00	988.10	1042.00
SUZLONENERGY	1935.60	2001.00	2066.45	1929.50	1792.55	1864.05
TATA MOTORS	771.10	796.30	821.50	762.80	704.10	737.60
TATA STEEL	833.40	869.55	905.65	847.90	790.15	811.80
TCS LTD.	1061.25	1084.05	1106.90	1047.15	987.40	1024.30
TITAN IND.	1532.95	1602.60	1672.30	1560.30	1448.30	1490.60
VIDESH SANCH	646.65	674.45	702.20	647.25	592.30	619.50
WIPRO	502.55	517.40	532.20	489.20	446.20	474.40

Intraday Range for 10-Dec-2007

Scrip	Close	R1	R2	S/R	S2	S1
A.C.C.	1064.70	1091.50	1118.25	1071.75	1025.25	1045.00
ABB LTD.	1606.05	1623.95	1641.90	1602.05	1562.20	1584.10
BHARTI TELE	959.65	988.10	1016.55	967.05	917.55	938.60
BHEL	2743.05	2807.00	2871.00	2771.00	2671.00	2707.00
BOM DYEING	725.00	763.70	802.35	738.35	674.35	699.70
CENTURY TEXT	1106.45	1131.00	1155.50	1113.50	1071.50	1089.00
HIND.LEVER	208.35	211.30	214.20	208.60	203.00	205.70
ICICI BANK	1247.50	1263.60	1279.70	1233.80	1187.90	1217.70
INFOSYS TECH	1718.15	1753.10	1788.05	1692.05	1596.05	1657.10
ITC LTD.	188.90	194.05	199.25	189.80	180.35	184.60
LARSEN & TOU	4261.35	4339.10	4416.80	4282.30	4147.80	4204.60
MAHA.TELE	177.35	183.65	189.90	178.75	167.60	172.50
MARUTIUDYOG	1042.25	1053.80	1065.30	1043.40	1021.50	1031.90
ONGC CORPN	1190.15	1210.95	1231.75	1188.10	1144.45	1167.30
PUNJ LLOYD	504.10	518.50	532.95	505.35	477.75	490.90
RANBAXY LAB.	407.25	411.05	414.85	405.60	396.35	401.80
REL COM LTD	734.30	752.15	770.05	737.10	704.15	719.20
REL.CAP.	2398.95	2485.35	2571.75	2403.60	2235.45	2317.20
RELIANCE	2841.65	2902.40	2963.20	2854.20	2745.20	2793.40
SATYAM COM	443.75	448.70	453.60	441.60	429.60	436.70
SIEMENS LTD.	1933.90	1968.50	2003.15	1944.25	1885.35	1909.60
STATE BANK	2436.60	2464.40	2492.15	2427.25	2362.35	2399.50
STEEL AUTH.	274.20	284.30	294.40	274.65	254.90	264.55
STERLITE IN	1095.85	1134.90	1173.95	1100.95	1027.95	1061.90
SUZLONENERGY	1935.60	1982.05	2028.45	1948.55	1868.65	1902.15
TATA MOTORS	771.10	780.30	789.45	772.65	755.85	763.50
TATA STEEL	833.40	854.85	876.30	840.55	804.80	819.10
TCS LTD.	1061.25	1077.50	1093.75	1053.75	1013.75	1037.50
TITAN IND.	1532.95	1585.50	1638.00	1551.75	1465.50	1499.25
VIDESH SANCH	646.65	671.40	696.15	650.25	604.35	625.50
WIPRO	502.55	509.30	516.10	497.20	478.30	490.40

Intra-Week Range for 10-Dec-2007 to 14-Dec-2007

Scrip	Close	R1	R2	S/R	S2	S1
BANKNIFTY	9814.80	10098.70	10240.65	9757.05	9273.45	9615.10
CNXIT	4720.35	4880.10	4959.95	4660.05	4360.15	4580.20
JUNIOR	11974.20	12869.25	13316.80	12224.65	11132.50	11777.10
NIFTY	5989.10	6135.50	6208.75	5975.75	5742.75	5902.50

Intraday Range for 10-Dec-2007

Scrip	Close	R1	R2	S/R	S2	S1
BANKNIFTY	9814.80	9993.40	10082.70	9809.70	9536.70	9720.40
CNXIT	4720.35	4820.10	4869.95	4690.05	4510.15	4640.20
JUNIOR	11974.20	11991.10	12153.55	11845.55	11537.55	11683.10
NIFTY	5989.10	6010.00	6085.45	5955.55	5825.65	5880.10

Amit A. Shitut

(91-20) 3024 0376

amit.shitut@religare.in

RELIGARE RESEARCH

Fundamental Research

Amitabh Chakraborty, CFA, FRM	President - Equity	amitabh.chakraborty@religare.in	(91-22) 6612 4603
Piyush Parag	Auto, Auto Ancillaries, Shipping	piyush.parag@religare.in	(91-22) 6612 4730
Abhishek Agarwal	Banking, Agri-Commodities	abhishek.a@religare.in	(91-22) 6612 4753
Dinesh Shukla	Banking, Agri-Commodities	dinesh.shukla@religare.in	(91-22) 6612 4739
Vinod Nair	Capital Goods, Engineering	nair.vinod@religare.in	(91-22) 6612 4600
Ashish Kila	Capital Goods, Engineering, Power	ashish.kila@religare.in	(91-22) 6612 4768
Ronald Siyoni	Capital Goods, Engineering, Power	ronald.siyoni@religare.in	(91-22) 6612 4615
Dalpat Mehta	Cement, Textiles	dalpat.mehta@religare.in	(91-22) 6612 4696
Anurag Purohit	Information Technology, Telecom	anurag.purohit@religare.in	(91-22) 6612 4795
Hitesh Punjabi	Information Technology, Telecom	hitesh.punjabi@religare.in	(91-22) 6612 4769
Ram Patnaik	Media, FMCG	ram.patnaik@religare.in	(91-22) 6612 4752
Reema Deshkar	Media, FMCG	reema.deshkar@religare.in	(91-22) 6612 4764
Suman Memani	Mid-caps, Construction, Realty	suman.memani@religare.in	(91-22) 6612 4736
Sudeep Anand	Oil & Gas, Chemicals	sudeep.anand@religare.in	(91-22) 6612 4670
Bhawana Verma	Oil & Gas, Chemicals	bhawana.verma@religare.in	(91-22) 6612 4713
Alok Dalal	Pharmaceuticals	alok.dalal@religare.in	(91-22) 6612 4750

Technical Research

Birendrakumar Singh	birendrakumar.singh@religare.in	(91-22) 6612 4657
Vasant Joshi	vasant.joshi@religare.in	(91-22) 6612 4614
Amit Shitut	amit.shitut@religare.in	(91-20) 3024 0376
Kalpana Kabra	kalpana.kabra@religare.in	(91-33) 3051 0947

Derivatives Research

Anil Gupta	anil.g@religare.in	(91-22) 6612 4661
Samir Badami	samir.badami@religare.in	(91-22) 6612 4637
Somendra Agarwal	somendra.agarwal@religare.in	(91-22) 6612 4767

Production

Anisha deSa	anisha.desa@religare.in	(91-22) 6612 4729
R Murali	r.murali@religare.in	(91-22) 6612 4674
Rajesh Mhatre	rajesh.mhatre@religare.in	(91-22) 6612 4728

Administration

Shraddha Hosalkar	shraddha.hosalkar@religare.in	(91-22) 6612 4680
-------------------	-------------------------------	-------------------

Religare Securities

Mumbai: 3rd Floor, Dheeraj Arma, Anant Kanekar Marg, Bandra (East), Mumbai-400 051. Phone: +91 22 66124600 Fax- 66124781

New Delhi: 19, Nehru Place, New Delhi - 110019, Phone: +91 11 30815100.

Disclaimer

Religare Securities Limited (Religare) has two independent equity research groups: Institutional Equities (Institutional Equity Research) and Priority Client Group (Religare Research). Religare Institutional Equity Research is aimed to service the institutional clients of Religare Securities Limited including the Portfolio Management Services of Religare whereas Religare Research is published with a view to service all segments of clients including Retail, HNIs and Institutional clients and PMS.

This document has been prepared by Religare Securities Limited – Priority Client Group. Affiliates of Religare-PCG may have issued other reports that are contrary with and reach different conclusion from the information presented in this report. The views and opinions expressed in this document may or may not match or may be contrary with the views, estimates, rating and target price of the Institutional Equities Research Group of Religare Securities Limited.

We are not soliciting any action based upon this material. This report is not to be construed as an offer to sell or the solicitation of an offer to buy any security in any jurisdiction where such an offer or solicitation would be illegal. It is for the general information of clients of Religare-PCG. It does not constitute a personal recommendation or take into account the particular investment objectives, financial situations, or needs of individual clients. Though disseminated to all the customers simultaneously, not all customers may receive this report at the same time. Religare-PCG will not treat recipients as customers by virtue of their receiving this report. We have reviewed the report, and in so far as it includes current or historical information, it is believed to be reliable. It should be noted that the information contained herein is from publicly available data or other sources believed to be reliable. Neither Religare, nor any person connected with it, accepts any liability arising from the use of this document.

This document is prepared for assistance only and is not intended to be and must not alone be taken as the basis for any investment decision. The investment discussed or views expressed may not be suitable for all investors. The user assumes the entire risk of any use made of this information. The recipients of this material should rely on their own investigations and take their own professional advice. Each recipient of this document should make such investigations as it deems necessary to arrive at an independent evaluation of an investment in the securities of companies referred to in this document (including the merits and risks involved), and should consult its own advisors to determine the merits and risks of such an investment. Price and value of the investments referred to in this material may go up or down. Past performance is not a guide for future performance. Certain transactions -including those involving futures, options and other derivatives as well as non investment grade securities - involve substantial risk and are not suitable for all investors. Reports based on technical analysis centers on studying charts of a stock's price movement and trading volume, as opposed to focusing on a company's fundamentals and as such, may not match with a report on a company's fundamentals.

Opinions expressed are our current opinions as of the date appearing on this material only. We do not undertake to advise you as to any change of our views expressed in this document. While we would endeavor to update the information herein on a reasonable basis, Religare, its subsidiaries and associated companies, their directors and employees are under no obligation to update or keep the information current. Also there may be regulatory, compliance, or other reasons that may prevent Religare and affiliates from doing so. Prospective investors and others are cautioned that any forward-looking statements are not predictions and may be subject to change without notice.

This report is not directed or intended for distribution to, or use by, any person or entity who is a citizen or resident of or located in any locality, state, country or other jurisdiction, where such distribution, publication, availability or use would be contrary to law, regulation or which would subject Religare and affiliates to any registration or licensing requirement within such jurisdiction. The securities described herein may or may not be eligible for sale in all jurisdictions or to certain category of investors. Persons in whose possession this document may come are required to inform themselves of and to observe such restriction.

Religare and its affiliates, officers, directors, and employees may: (a) from time to time, have long or short positions in, and buy or sell the securities thereof, of company (ies) mentioned herein or (b) be engaged in any other transaction involving such securities and earn brokerage or other compensation or act as a market maker in the financial instruments of the company (ies) discussed herein or act as advisor or lender / borrower to such company (ies) or have other potential conflict of interest with respect to any recommendation and related information and opinions. Without limiting any of the foregoing, in no event shall Religare, any of its affiliates or any third party involved in, or related to, computing or compiling the information have any liability for any damages of any kind.

Copy right in this document vests exclusively with Religare. This information should not be reproduced or redistributed or passed on directly or indirectly in any form to any other person or published, copied, in whole or in part, for any purpose, without prior written permission from Religare. We do not guarantee the integrity of any e-mails or attached files and are not responsible for any changes made to them by any other person.

The analyst for this report certifies that all of the views expressed in this report accurately reflect his or her personal views about the subject company or companies and its or their securities, and no part of his or her compensation was, is or will be, directly or indirectly related to specific recommendations or views expressed in this report. Analyst's holding in the stocks mentioned in the report: **NIL**.