

Sensex ends flat amid volatility

Overlooking favorable cues from the global markets, the Sensex opened with a marginal positive gap of 9.34 points at 16,686.38. Subsequently, the gauge touched a 16-month high of 16,820.02 due to buying support in the IT, Auto and Banking stocks. However, in the early afternoon deals, the gauge soon pared all its gains and slipped in to the red zone as higher than expected inflation figure weighed on investors' sentiments. The market, nevertheless, recovered due to bargain-hunting at lower levels. The bourse gained further ground in the last session of trade helped by positive European markets. The Sensex finally ended the choppy session flat with a marginal gain of 34.07 points or 0.20%, at 16,711.11.

The Nifty closed the day above the 4,900 mark with a gain of 7.15 points or 0.14%, at 4,965.55.

Negative Market Breadth

Market breadth was negative with an advance-decline ratio of 0.78:1 on the BSE. Out of the 2,888 stocks traded, 1,223 advanced, 1,574 declined, and 91 remain unchanged.

IT surges, Oil & Gas Plunges

IT led the gainers' list as it rose 1.91% on reports of impressive economic data from the US. Auto advanced 1.46% on hopes of strong sales in the upcoming festive season. Among other gainers, Banking, Consumer Durable and Capital Goods gained 0.78%, 0.66%, and 0.55%, respectively. On the other hand, Oil and Gas slipped 2.86%, while Realty slipped 0.91% on profit-booking. Among other laggards, Metal, Power, and FMCG fell by close to 0.25% each, while Pharma declined 0.14%.

US markets decline and European markets advance

- US stocks slipped after a three-day run-up on concern that recent gains were overextended despite the latest round of solid economic data.
- European shares advanced for a second straight session, powered by energy and financial stocks, on expectations the global economy was on a recovery path.

Index	Latest	1D Chg	YTD
Sensex (17-Sep-09)	16,711.11	0.20%	73.22%
Nifty (17-Sep-09)	4,965.55	0.14%	67.80%
Nasdaq (17-Sep-09)	1,721.09	(0.15)%	42.05%
DJIA (17-Sep-09)	9,783.92	(0.08)%	11.48%
S&P 500 (17-Sep-09)	1,065.49	(0.31)%	17.96%
FTSE (17-Sep-09)	5,163.95	0.78%	16.46%
CAC 40 (17-Sep-09)	3,835.27	0.56%	19.18%
Nikkei 225 (17-Sep-09)	10,443.80	1.68%	17.88%
Hang Seng (17-Sep-09)	21,768.51	1.71%	51.30%

SENSEX		
Top Gainers	Close	1DGain
ACC Limited	827.95	3.65%
Hindalco	136.05	3.62%
JaiPrakash Associates	247.40	3.28%
Bharti Airtel	433.15	3.13%
Maruti Suzuki	1,559.35	3.08%
Top Losers	Close	1DLoss
RIL	2,086.35	(4.45)%
Tata Steel	521.15	(1.97)%
ITC	228.60	(1.02)%
NTPC	208.40	(0.71)%
Hero Honda	1,663.15	(0.65)%

NIFTY		
Top Gainers	Close	1DGain
HCL Technologies Ltd	340.00	5.74%
ACC Limited	830.00	3.60%
Hindalco	135.75	3.55%
Grasim Industries	2,750.00	2.56%
Maruti Suzuki	1,554.20	2.43%
Top Losers	Close	1DLoss
BPCL	535.05	(5.07)%
RIL	2,074.70	(5.00)%
Unitech	109.50	(3.48)%
Reliance Capital	905.90	(2.19)%
Tata Steel	519.05	(2.08)%
Market Stats	BSE	NSE
Advance-Decline ratio	0.78	0.74
Volume (in'000)	593,200	1,159,082

SENSEX



NIFTY



Corporate Announcements:



- **Aban Offshore** will raise Rs. 44.22 bn from international markets and by issuing shares to qualified institutional buyers. (BS)
- **Alstom Projects**, has bagged Rs. 5.63 bn contract in consortium with global players for providing signaling system to the Bangalore Metro Rail Corporation Ltd. (BS)
- **Reliance Industries** held Petroleum Trust has sold 10.5 million equity shares of the company. The Trust will realize approximately Rs. 31.88 bn, at an average price of about Rs 2,125 per share. (BS)

Economic and Political Headlines:

- Inflation turned positive for the first time in three months, rising to 0.12% during the week ended September 5 as foodstuff became costlier. During the week, food items in raw form became dearer by 2.2%, as prices of some of items like bajra rose by 2%. Fruit and vegetable turned expensive by 24%. Sugar, khandsari and gur became dearer by 40.3%, pulses by 21.5% and cereals by 12.6%. At the same time, prices of milk went up by 10.2%. Among manufactured items, polyester staple fiber moved up by 5%, lead ingots by 4 %, electrical relays by 3% and other iron steel and zinc ingots by 1% each. However, prices of plastic containers declined by 6%, enamels by 4% and basic pig iron and foundry pig iron by 2% each. (BS)

International News Headlines:

- Household wealth in the US increased by USD 2 tn in the second quarter, bringing an end to the biggest slump on record. Net worth for households and non-profit groups climbed to USD 53.1 tn from USD 51.1 tn in the first quarter, according to the Federal Reserve's Flow of Funds report. (Bloomberg)
- Housing starts in the US rose to the highest level in nine months adding to evidence an economic recovery is taking hold. Housing starts rose 1.5% last month to an annual rate of 598,000, the Commerce Department said in Washington. (Bloomberg)
- The number of US workers filing new claims for jobless benefits unexpectedly fell last week. Initial claims for state unemployment insurance declined to 545,000 in the week ended Sept 12 from 557,000 the week before, the Labor Department said. (Reuters)

Most Active Stocks by Value (in Cr)

BSE	Close	%Chg	Value	Volume
RIL	2,086.35	(4.45)%	2,746	12,949,210
Tata Steel	521.15	(1.97)%	190	3,612,173
JaiPrakash Asso	247.40	3.28%	170	6,943,041
Aban Offshore	1,611.35	(0.53)%	165	1,016,429
Unitech	109.90	(3.04)%	142	12,716,705

NSE	Close	%Chg	Value	Volume
RIL	2,074.70	(5.00)%	3,509	16,579,451
SBI	2,097.00	0.49%	666	3,146,790
Tata Steel	519.05	(2.08)%	656	12,448,005
Unitech	109.50	(3.48)%	590	52,818,047
ICICI Bank	871.00	0.75%	569	6,531,591

Most Active Calls by Contract Value (in Cr)

	Value	Price	% Chg
Nifty 5000 Call Sep-09	5,968	39.00	(8.34)%
Nifty 4900 Call Sep-09	3,325	95.00	(2.61)%

Most Active Puts by Contract Value (in Cr)

Nifty 5000 Put Sep-09	6,121	78.00	(2.44)%
Nifty 4900 Put Sep-09	5,522	38.50	(4.94)%

Most Active Future Contracts by Value (in Cr)

Nifty Sep-09	12,959	4,961.50	(0.01)%
RELIANCE Sep-09	2,580	2,084.80	(4.50)%

Top Contracts by Change in Open Interest

Contract	Change in OI	Price	% Chg
UNITECH Oct-09	3,622,500	110.60	(2.98)%
JPASSOCIAT Sep-09	3,580,875	247.50	3.25%

Fill open positions in Derivatives (NSE)

	Idx Fut	Ind Opt	Stk Fut	Stk Opt
No of Contracts	668,696	1,499,322	834,922	85,457
Amt (in cr.)	16,013	37,089	27,737	2,924

Fls (Rs. Cr.)*	17-Sep-09	MTD	YTD
Equity inflows	6,123	37,640	398,170
Equity outflows	3,363	31,898	386,888
Net	2,759	5,742	11,282

DlIs (Rs. Cr.)*	17-Sep-09	MTD	YTD
Equity inflows	1,820	18,791	214,113
Equity outflows	1,634	17,339	189,644
Net	186	1,452	24,469

* Fill & DII data is provisional in nature

Commodities	Latest	1DChg
Brent (USD/bbl) (Sep 17, 2009)	70.06	3.95%
Gold (USD/oz) (Sep 17, 2009)	1018.50	0.27%
Cu (USD/lb) (Sep 17, 2009)	2.88	(1.39)%

X-rate	17-Sep-09	1DChg	1MChg
USD/Rs.	48.0	(0.81)%	(1.46)%
GBP/Rs.	79.3	(0.48)%	(0.64)%
EUR/Rs.	70.8	(0.37)%	2.89%
JPY/Rs.	52.7	(1.25)%	2.39%

ADR/GDR (USD)	17-Sep-09	1DChg
Dr Reddy's	17.47	0.58%
HDFC Bank	108.79	(0.51)%
ICICI Bank	35.75	(2.99)%
Infosys	49.16	1.26%
Wipro	17.08	1.91%
Tata Communications	20.36	1.34%
Tata Motors	13.31	(0.15)%
MTNL	3.76	0.80%
Patni	18.52	2.83%
Sterlite	15.74	(2.54)%

Macro Economic Indicators

GDP Growth*	6.70%
Inflation (week ended Sep 05, 2009)	0.12%
Index of Industrial Production (IIP) growth (June)	6.80%
CRR (Sep 17, 2009)	5.00%
SLR (Sep 17, 2009)	24.00%

* As per CSO Estimate for 2008-09

MORNING BRIEF *India*

Daily Market Update

September 18, 2009

BSE Bulk Deals

COMPANY	CLIENT	TRAN	QTY	TRADED PRICE
20 MICRONS	HITESH SHASHIKANT JHAVERI	BUY	81,537	45.72
A K CAPITAL	DIPCO LTD	BUY	235,000	226.77
A K CAPITAL	FIRSTRAND (IRELAND) PUBLIC LIMITED COMPANY	SELL	343,316	226.64
A K CAPITAL	LIKHAMI LEASING LIMITED	BUY	100,000	226.68
AVAYA GLOBAL	BHAVIN Y MEHTA	BUY	76,718	187.55
BENGAL TEA F	SANDIP PRAVINCHANDRA VORA	BUY	62,401	37.78
CAMLIN LIMIT	COMGEST GROWTH INDIA	SELL	300,000	30.21
COMP-U-LEARN	DECHAMNA M B	SELL	200,000	15.78
FILAT FASH	AADESH COMMODITIES PRIVATE LTD	BUY	53,190	43.07
FILAT FASH	AMRUT SECURITIES LTD.	SELL	78,503	42.23
FILMCIT MEDI	BALDEVSINH VIJAYSINH ZALA	BUY	1,762,300	1.04
FILMCIT MEDI	WELLNESS COMMUNICATION (P) LTD	SELL	1,800,000	1.04
GMR FERRO	ARCADIA SHARE & STOCK BROKERS PVT. LTD	SELL	69,374	37.62
KAMAN HSG	NISHA SUMANJAIN	BUY	110,000	40.41
KAY POW PAP	GIRRAJ PRASAD GUPTA	SELL	70,000	6.53
KAY POW PAP	NARENDER GUPTA	SELL	68,400	6.55
LANCOR HOLDS	SHEKAR VISWANATH RAJAMANI	BUY	110,000	84.78
LKP FIN	SUNITA BANSAL	BUY	84,553	144.64
MAARS SOFTWR	SPM FINANCIAL ADVISORY SERVICES PVT LTD	BUY	860,000	3.70
MAARS SOFTWR	SPM FINANCIAL ADVISORY SERVICES PVT LTD	SELL	960,000	3.66
MOVING PICTU-PMS	ANAND KUMAR DAGA	SELL	50,000	5.72
MOVING PICTU-PMS	MUPPA VENKAIAH	BUY	50,000	5.91
MOVING PICTU-PMS	SAMBA SIVARAO CINAGANTI	BUY	50,000	5.94
NEXXOFT INFO	PRAVIN DEEPSINH CHAVDA	SELL	58,052	17.14
PREM EXPLOSI	WEALTH BRIDGE CAPITAL ADVISORS P LTD	BUY	50,000	68.46
SANGHVI MOV	MINA CHANDRAKANT SANGHAVI	SELL	800,000	181.50
SANGHVI MOV	RISHI CHANDRAKANT SANGHVI	BUY	800,000	181.50
SEL MANUF	RITU SALUJA	SELL	161,050	70.98
SPICEJET LTD	CITIGROUP GLOBAL MARKETS MAURITIUS PRIVATE LIMITED	BUY	3,680,000	34.41
SPICEJET LTD	JMP SECURITIES PVT LTD	BUY	1,902,532	36.13
SPICEJET LTD	JMP SECURITIES PVT LTD	SELL	1,702,354	36.21
VEER ENERGY	AANGI SHARES & SERVICES PVT. LTD.	BUY	1,518,789	22.85
VEER ENERGY	AANGI SHARES & SERVICES PVT. LTD.	SELL	1,302,217	22.40
VEER ENERGY	JIGAR SHAH	BUY	265,000	22.69
VEER ENERGY	YOGESH JAISUKHLAL SANGHVI	SELL	1,000,000	22.58

Note: Bulk Deals over and above 50,000 shares are only considered

NSE Bulk Deals

COMPANY	CLIENT	TRAN	QTY	TRADED PRICE
ABAN	SMC GLOBAL SECURITIES LTD.	BUY	97,850	1,619.14
ABAN	SMC GLOBAL SECURITIES LTD.	SELL	195,850	1,625.59
CAMLIN	COMGEST GROWTH PLC A/C COMGEST GROWTH INDIA	SELL	300,000	30.35
CLASSIC	J V STOCK BROKING PRIVATE LIMITED	BUY	275,013	24.65
CLASSIC	J V STOCK BROKING PRIVATE LIMITED	SELL	308,678	24.67
CLASSIC	RAJ KUMAR GUPTA MR (C46)	SELL	300,000	23.53
FSL	PRAKASH K SHAH SHARES & SECURITIES PVT. LTD	BUY	2,147,767	35.12
FSL	PRAKASH K SHAH SHARES & SECURITIES PVT. LTD	SELL	2,085,767	35.07
GMRFER	YOGESH R JADHAV	SELL	77,523	38.00
GOKUL	GRANITE H. C. VENTURES LLC	SELL	242,000	283.00
ISPATIND	JAYPEE CAPITAL SERVICES LTD.	BUY	11,113,959	23.63
ISPATIND	JAYPEE CAPITAL SERVICES LTD.	SELL	10,903,777	23.65
KFA	TRANSGLOBAL SECURITIES LTD.	BUY	1,423,919	51.78
KFA	TRANSGLOBAL SECURITIES LTD.	SELL	1,450,537	51.83
ORCHIDCHEM	RATNABALI CAPITAL MARKETS LTD.	BUY	203,331	164.33
ORCHIDCHEM	RATNABALI CAPITAL MARKETS LTD.	SELL	1,214,331	165.14
RAJESHEXPO	LTD JOIS INVESTMENTS P	BUY	873,420	76.71
RAJESHEXPO	LTD JOIS INVESTMENTS P	SELL	1,673,274	76.93
SELAN	EQUITY INTELLIGENCE INDIA PRIVATE LIMITED [P M S]	BUY	82,130	306.72
SELMCL	RITU SALUJA	SELL	241,026	71.00

Note: Bulk Deals over and above 50,000 shares are only considered

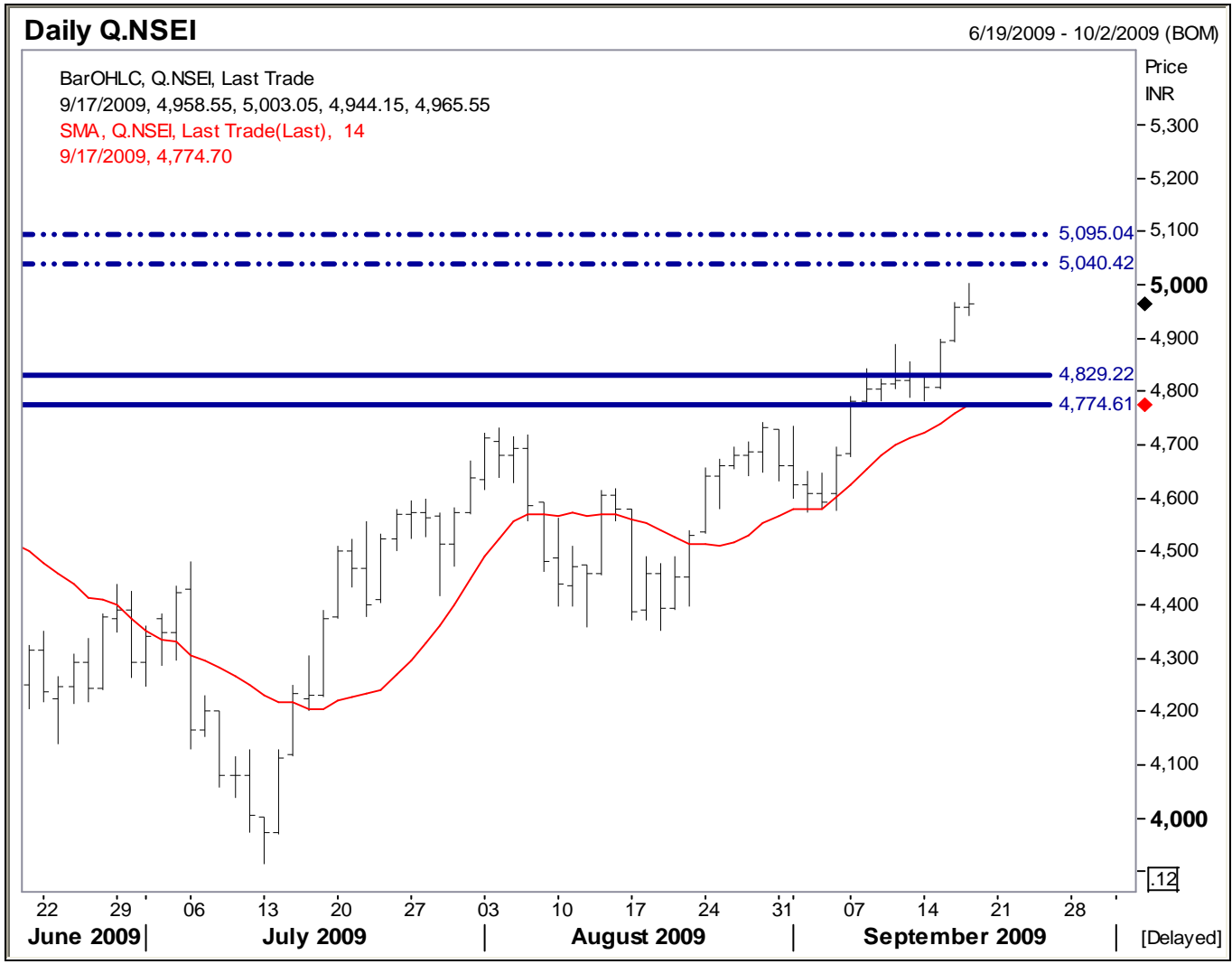
MORNING BRIEF *India*

Daily Market Update

September 18, 2009

Technical Analysis

NIFTY: 4,965.55



MORNING BRIEF *India*

Daily Market Update

September 18, 2009

Name	LTP	Support 1	Support 2	Resistance 1	Resistance 2
NIFTY	4,965.55	4,829.22	4,774.61	5,040.42	5,095.04
ABAN Offshore Ltd	1,611.45	1,574.23	1,502.69	1,667.32	1,709.63
ABB Ltd India	797.00	770.10	746.32	823.55	862.32
ACC Limited	828.80	801.50	769.85	861.23	881.30
Aditya Birla Nuvo	973.60	951.26	910.63	1,005.63	1,047.65
Ambuja Cements	99.40	97.15	95.00	102.50	104.56
Asian Paints Ltd	1,364.45	1,313.90	1,258.50	1,407.00	1,469.63
Axis Bank	911.85	887.60	850.90	937.00	948.33
Bajaj Auto Ltd	1,413.70	1,368.52	1,310.29	1,452.63	1,495.87
Bank Of Baroda	482.85	470.10	453.90	500.80	518.40
BF Utilities Ltd	910.95	891.96	865.42	935.43	985.11
Bharat Electronics	1,383.20	1,343.70	1,311.90	1,424.00	1,470.90
Bharat Forge Co	254.35	244.55	239.85	260.10	267.85
Bharat Heavy Electricals	2,273.80	2,196.50	2,157.89	2,326.63	2,367.00
Bharat Petroleum	536.00	522.42	503.69	555.00	572.63
Bharti Airtel Ltd	432.80	420.90	406.89	443.90	457.90
Bosch Ltd	4,017.90	3,895.60	3,820.36	4,129.63	4,268.70
Cairn India	268.05	257.80	249.90	277.63	283.45
Canara Bank	319.10	309.63	299.40	329.50	340.00
Cipla Ltd	259.15	253.50	242.00	267.87	280.59
Container Corporation	1,095.70	1,059.07	1,022.41	1,118.28	1,153.56
Crompton Greaves	313.40	302.52	290.00	325.20	340.15
Dabur India Ltd	132.95	128.40	121.50	136.30	142.90
DLF Ltd	420.05	405.12	396.60	429.60	439.55
Dr Reddy's Labs	835.05	804.00	789.63	860.45	879.40
Essar Oil Ltd	163.50	160.20	157.00	169.70	174.60
Financial Technologies	1,382.70	1,350.21	1,298.87	1,429.53	1,494.00
Gail India Ltd	351.40	339.62	324.52	364.45	376.50
Glaxosmithkline	1,469.65	1,429.63	1,390.12	1,522.60	1,612.96
Glenmark Pharma	217.50	211.50	201.30	226.40	232.00
GMR Infrastructure	138.35	134.00	128.50	143.60	152.30
Grasim Inds Ltd	2,768.95	2,721.20	2,646.96	2,855.10	2,963.51
HCL Technologies Ltd	341.70	329.52	319.60	352.96	368.74
HDFC	2,561.30	2,485.00	2,399.94	2,640.19	2,714.31
HDFC Bank Ltd	1,536.45	1,491.20	1,443.60	1,584.60	1,626.30
Hero Honda Motors	1,663.15	1,624.30	1,558.42	1,715.20	1,754.63
Hindalco	136.40	131.26	125.80	142.69	149.60
Hindustan Lever	260.20	250.20	239.85	270.40	281.20
Hindustan Zinc	833.40	804.52	771.23	865.90	886.70
HPCL	379.50	368.00	354.26	393.56	403.52
ICICI Bank Ltd	872.55	839.60	800.20	888.60	906.89
Idea Cellular	76.30	73.44	71.30	78.50	81.24
Indian Hotels Co	77.95	75.59	71.09	80.20	82.69
Indian Oil Corporation	631.50	609.50	585.00	643.00	661.36
Indian Overseas Bank	113.10	108.40	106.01	115.86	118.52
Industrial Dev Bk Ind	116.45	113.63	108.96	119.68	122.90
Infosys Technologies Ltd	2,361.90	2,278.33	2,170.80	2,419.00	2,460.30
Infrastructure Development	142.55	139.02	135.90	148.52	150.20
ITC Ltd	228.80	221.60	214.20	234.60	243.52
Jaiprakash Associates	247.40	239.85	229.30	252.90	257.84

MORNING BRIEF *India*

Daily Market Update

September 18, 2009

Name	LTP	Support 1	Support 2	Resistance 1	Resistance 2
Jet Airways India	315.70	306.96	289.63	327.62	345.96
Jindal Steel & Power	626.95	613.00	598.60	643.96	670.00
JSW Steel Ltd	799.30	783.50	746.50	825.96	856.96
Kotak Mahindra Bank	735.80	719.63	687.96	761.20	789.60
Larsen & Toubro	1,645.60	1,581.03	1,532.44	1,675.88	1,722.69
MMTC Ltd	34,082.55	33,412.00	33,060.42	35,270.92	36,109.00
MTNL	92.10	90.05	86.30	95.90	99.00
Mahindra & Mahindra	869.30	836.59	800.00	885.00	909.30
Mangalore Refineries	86.35	83.99	79.20	89.50	93.10
Maruti Udyog Ltd	1,559.35	1,477.30	1,425.00	1,616.85	1,671.63
Mundra Port and SEZ Ltd	534.95	522.30	502.63	550.10	586.42
National Aluminum Co	353.10	341.95	325.40	365.85	377.98
Nati Mineral Development	359.60	351.10	337.20	370.50	383.12
Nestle India Ltd	2,218.85	2,168.65	2,120.36	2,293.00	2,356.99
Neyveli Lignite	134.35	130.00	128.45	137.50	144.96
NTPC Limited	208.45	202.56	195.36	214.50	217.91
Oil & Natural Gas Corp	1,159.10	1,123.24	1,079.02	1,190.38	1,223.34
Oracle Financial Services	1,782.90	1,741.40	1,692.00	1,836.00	1,882.77
Patni Computers	459.05	442.63	429.50	469.63	482.99
Power Finance Corporation	229.90	221.45	216.30	238.45	245.86
Power Grid Corporation	108.05	104.30	100.23	111.45	114.69
Punjab Natl Bank	774.10	749.90	709.63	789.63	806.96
Ranbaxy Labs Ltd	351.25	340.00	322.00	363.00	375.00
Reliance Capital	910.70	881.26	858.13	945.70	966.00
Reliance Communication	312.65	300.52	289.60	324.96	331.00
Reliance Infrastructure	1,191.50	1,160.20	1,123.59	1,219.00	1,278.63
Reliance Industries	2,086.15	2,012.00	1,935.85	2,166.00	2,266.30
Reliance Petroleum	129.90	126.45	119.00	134.60	141.22
Sesa Goa Ltd	269.65	261.53	249.60	279.56	286.50
Siemens India	561.45	539.69	515.60	568.90	579.60
Sobha Developers	256.30	247.96	234.96	268.96	279.99
State Bank of India	2,106.70	2,046.00	1,942.63	2,177.86	2,256.45
Steel Authority of India Ltd	177.90	169.85	164.30	185.63	195.64
Sterlite Industries	771.75	752.63	718.45	789.95	805.26
Sun Pharmaceutical	1,220.45	1,185.60	1,154.55	1,254.22	1,349.86
Sun TV Network	309.90	296.40	285.60	319.50	327.00
Suzlon Energy Ltd	97.95	95.50	92.90	101.30	104.50
Tata Communications	485.05	466.15	440.30	496.59	512.60
Tata Consultancy	582.95	561.42	543.63	596.86	612.45
Tata Motors Ltd	606.15	581.42	564.36	625.86	641.96
Tata Power Co	1,313.35	1,267.60	1,217.24	1,336.90	1,367.88
Tata Steel Limit	520.95	500.10	485.60	541.63	568.90
Tech Mahindra Ltd	910.45	884.51	859.90	929.00	945.00
Union Bank of India	250.35	241.50	234.78	261.42	269.50
Unitech Limited	110.15	107.20	105.01	114.50	119.00
United Breweries	149.00	145.40	142.30	155.00	164.77
United Spirits	887.20	861.20	845.60	921.60	935.69
Videocon Industries	237.10	227.85	222.46	242.51	250.33
Wipro Limited	566.25	545.00	532.90	583.40	594.80
Zee Entertainment	212.05	207.40	200.00	219.80	228.41

Disclaimer:

This report is not for public distribution and is only for private circulation and use. The Report should not be reproduced or redistributed to any other person or person(s) in any form. No action is solicited on the basis of the contents of this report.

This material is for the general information of the authorized recipient, and we are not soliciting any action based upon it. This report is not to be considered as an offer to sell or the solicitation of an offer to buy any stock or derivative in any jurisdiction where such an offer or solicitation would be illegal. It is for the general information of clients of Indiabulls Securities Limited. It does not constitute a personal recommendation or take into account the particular investment objectives, financial situations, or needs of individual clients. You are advised to independently evaluate the investments and strategies discussed herein and also seek the advice of your financial adviser.

Past performance is not a guide for future performance. The value of, and income from investments may vary because of changes in the macro and micro economic conditions. Past performance is not necessarily a guide to future performance.

This report is based upon information that we consider reliable, but we do not represent that it is accurate or complete, and it should not be relied upon as such. Any opinions expressed here in reflect judgments at this date and are subject to change without notice. Indiabulls Securities Limited (ISL) and any/all of its group companies or directors or employees reserves its right to suspend the publication of this Report and are not under any obligation to tell you when opinions or information in this report change. In addition, ISL has no obligation to continue to publish reports on all the stocks currently under its coverage or to notify you in the event it terminates its coverage. Neither Indiabulls Securities Limited nor any of its affiliates, associates, directors or employees shall in any way be responsible for any loss or damage that may arise to any person from any error in the information contained in this report.

The analyst for this report certifies that all of the views expressed in this report accurately reflect his or her personal views about the subject stock and no part of his or her compensation was, is or will be, directly or indirectly related to specific recommendations or views expressed in this report. No part of this material may be duplicated in any form and/or redistributed without Indiabulls Securities Limited prior written consent.

The information given herein should be treated as only factor, while making investment decision. The report does not provide individually tailor-made investment advice. Indiabulls Securities Limited recommends that investors independently evaluate particular investments and strategies, and encourages investors to seek the advice of a financial adviser. Indiabulls Securities Limited shall not be responsible for any transaction conducted based on the information given in this report, which is in violation of rules and regulations of National Stock Exchange or Bombay Stock Exchange.