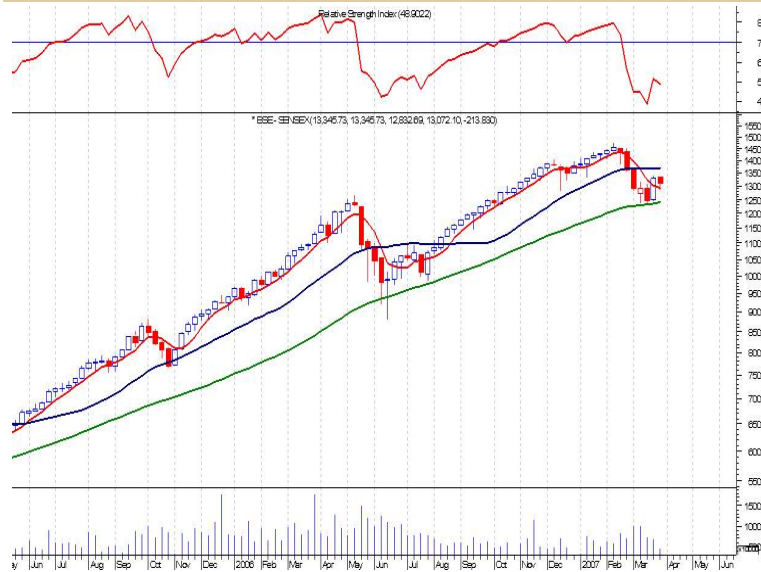
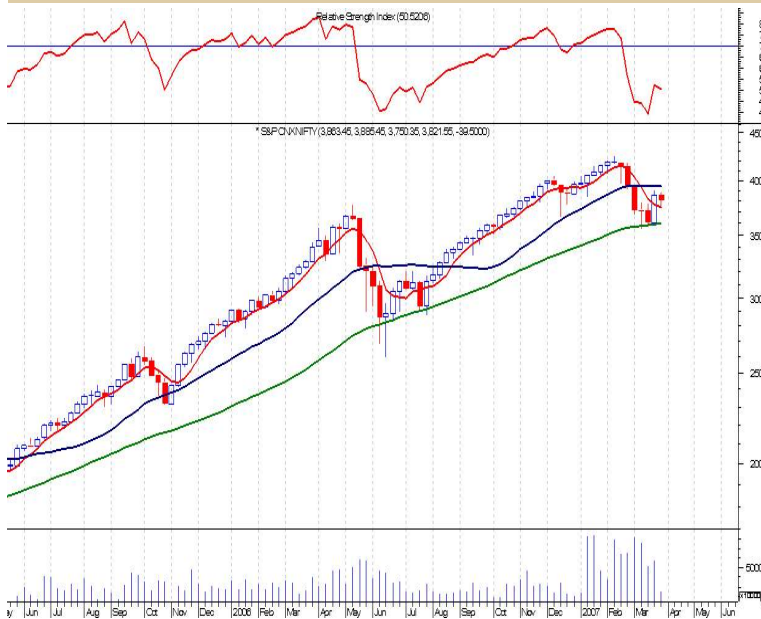


### BSE Sensex



### Nifty



**Note:**

- 1 Short-term trading on the basis of technical is a high risk and skill oriented venture and may result in huge losses also. Traders doing so are doing at their own risk. We are not responsible for any damages.
2. Mostly it is not advisable to buy/sell a stock if it touches the target price first and then comes within recommended range of buy/sell.
3. Never wait for actual target to be reached book profits slightly before target price.

Particulars	BSE Sensex	CNX Nifty
<b>Open</b>	13345.73	3863.45
<b>High</b>	13345.73	3885.45
<b>Low</b>	12832.69	3750.35
<b>Close</b>	13072.10	3821.55
<b>Previous Close</b>	13285.93	3861.05
<b>5-Week Avg.</b>	12911.91	3747.18
<b>20-Week Avg.</b>	13676.15	3947.75
<b>50-Week Avg.</b>	12395.44	3603.56
<b>RSI (14 Week)</b>	48.90	50.52
<b>Pivot</b>	13083.51	3819.12
<b>S1</b>	12821.28	3752.78
<b>S2</b>	12570.47	3684.02
<b>R1</b>	13334.32	3887.88
<b>R2</b>	13596.55	3954.22

### Technical View :

During the week-ended 30.03.07, Nifty and Sensex have exhibited a harami candlestick. Here the high of the candlestick is lower than the previous candlestick's high and low of the candlestick is higher than the previous candlestick's low. This candlestick indicates a sideways bias.

However, based on the chart pattern developed todate, the current trend has a negative bias and hence, caution is still advised in the market for the time being.

On the average front, the indices have rebounded from the vicinity of the 50-week simple moving averages. However as the 5-week simple moving average is trading below the 20-week simple moving averages, the trend still has a negative bias.

On the support front, the immediate support for nifty is around 3750 level and for the Sensex the support is around 12,800 level. Breach of these support levels may lead to a deeper correction and hence, one may use these levels as the stop loss levels for long positions for the time being.

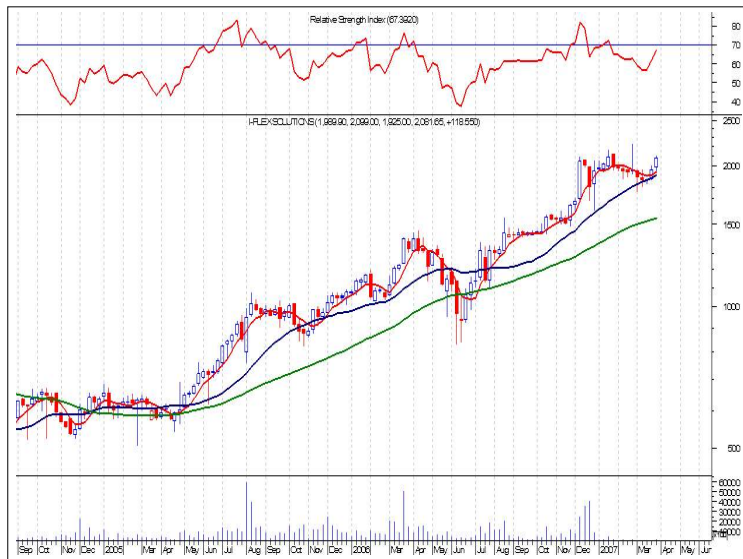
On the resistance front, the Nifty faces resistance at around 3950-4050 level and the Sensex at around 13,500-13,800

### Individual Scrips

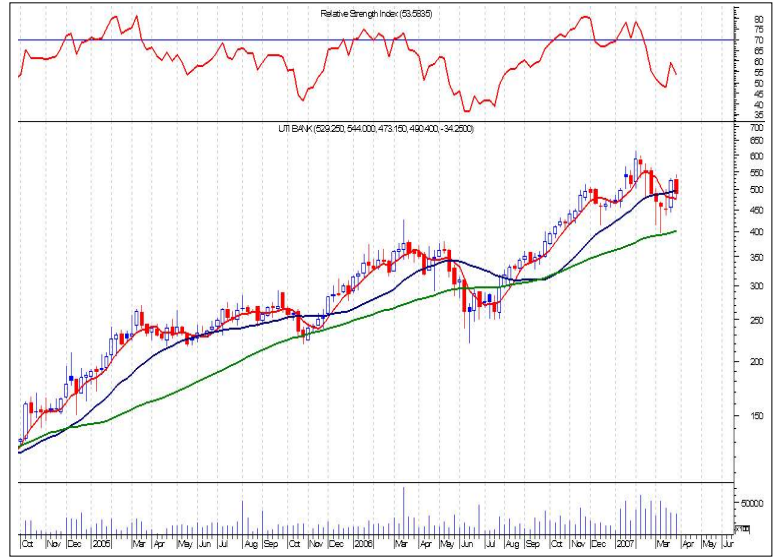
Recommendation validity Period: 4 weeks. Stop Loss is on weekly closing price basis.

Scrip	Price	Recommendation	Stop Loss	Target
I-Flex	Rs.2081.65.	Buy between Rs2070 and Rs. 2080.	Rs.2050.	Rs. 2140.
UTI Bank.	Rs.490.40.	Sell between Rs.480 and Rs.490.	Rs.515.	Rs.410.
ICICI Bank.	Rs.853.35.	Sell between Rs.850 and Rs.840.	Rs.890.	Rs.740.
TCS	Rs.1233.85.	Sell between Rs.1230 and Rs.1240.	Rs.1285.	Rs.1125.

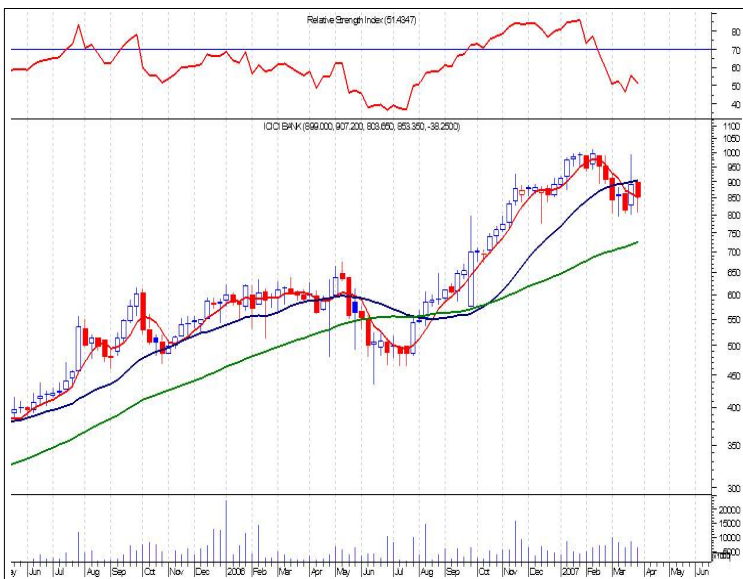
### I-FLEX



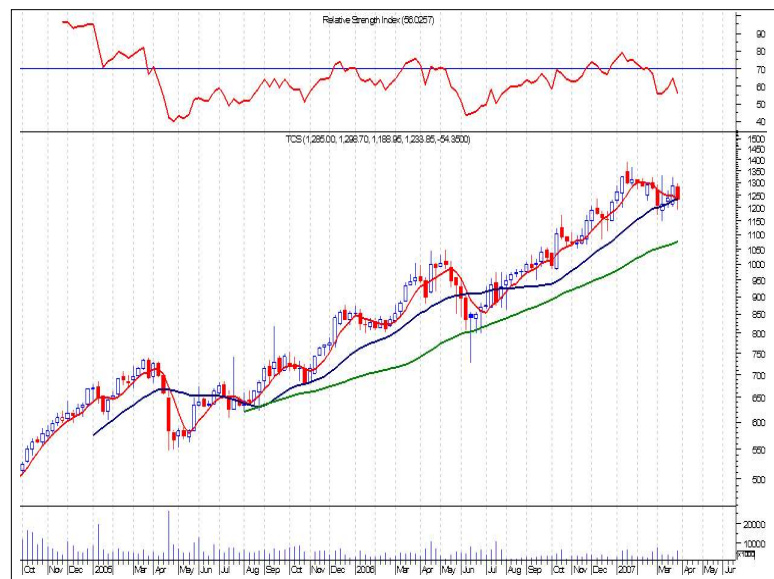
### UTI Bank.



### ICICI Bank.



### TCS.



**Note:**

4. Short-term trading on the basis of technical is a high risk and skill oriented venture and may result in huge losses also. Traders doing so are doing at their own risk. We are not responsible for any damages.
5. Mostly it is not advisable to buy/sell a stock if it touches the target price first and then comes within recommended range of buy/sell.
6. Never wait for actual target to be reached book profits slightly before target price.

### Call Tracker:

Scrip	Original Call	Change in Call	Amount Profit/(Loss)	% Gain Loss
HTMT	Buy between Rs.710 and Rs.720. SL-Rs.700. TGT-RS.755.			
Moser Baer	Buy between Rs.335 and Rs.345. SL-Rs.325. TGT-Rs.370.	Target Reached.	+Rs.30.	+8.82%
Dr Reddy	Buy between Rs.750 and Rs.760. SL-Rs.740. TGT-Rs.800.	SL Hit.	-Rs.15.	-1.98%
ACC	Buy between Rs.1030 and Rs.1040. SL-Rs.1020. TGT-Rs.1080.	SL Hit.	-Rs.15.	-1.45%
GAIL.	Buy between Rs.285 and Rs.290. SL.280. TGT-Rs.310.	Target reached.	+Rs.22.50.	+7.82%
Glaxo	Buy between Rs.1175 and Rs.1185. SL-Rs.1165. TGT-Rs.1235.	Target Reached.	+Rs.55	+4.66%
IVRCL INFRA.	Buy between Rs.430 and Rs.435. SL-Rs.420. TGT-Rs.475.	SL Hit.	-Rs.12.50.	-2.89%.
JET Airways.	Buy between Rs.770 and Rs.780. SL-Rs.750. TGT-Rs.845.	SL Hit.	-Rs.25.	-3.22%
ITC	Buy above the level of Rs.177.50 upto the level of Rs.178. SL-Rs.174. TGT-Rs.189.		Not triggered.	--
REL	Buy between Rs.540 and Rs.550. SL-Rs.530. Rs. 590.	SL hit	-Rs.15	-2.75%
SBIN	Buy between Rs.1180 and Rs.1190. SL-Rs.1170. Rs.1230.	SL Hit.	-Rs.15.	-1.26%
LIC Hous. Fin.	Buy between Rs.165 and Rs.170. SL-Rs.160. Rs.190.	SL Hit.	-Rs.7.50.	-4.4%
Britannia Inds.	Buy between Rs.1250 and Rs.1275. SL-Rs.1200. TGT-Rs.1425.	Close Trade.	-	-
Hcl-Tech.	Buy between Rs.664 and Rs.674. SL-Rs.654. TGT.Rs.700.	Target reached.	+Rs.31	+4.63%
Dr.Reddy's	Buy between Rs.728 and Rs.738. SL-Rs.718. TGT-Rs.778.	SL Hit	-Rs.15.	-2.04%
Biocon.	Buy between Rs.430 and Rs.439. SL-Rs.420. TGT.Rs.478.	Not Triggered.	-	-
Bharti Airtel	Buy between Rs.720 and Rs.740. SL-700. TGT-Rs.790.	Book Profits.	-	-
ABB	Sell between Rs.3700 and Rs.3750. SL-Rs.3800. TGT-Rs.3500.	Target Reached.	+Rs.225	+6.04%
Bharat Forge	Sell between Rs.330 and Rs.335. SL-Rs.345. TGT-Rs.300.	Target Reached.	+Rs.32.50.	+9.77%
CIPLA	Sell between Rs.245 and Rs.250. SL-Rs.265. TGT-Rs.205.	Lower SL to Rs.250.		
Grasim	Buy between Rs. 2000 and Rs. 2050. SI- Rs. 1900. TGT-Rs.2400.	Close Trade.		
Satyam Comp.	Sell between Rs.425 and Rs. 435. SL-Rs.445. TGT-Rs.385.	SL Hit.	-Rs.15.	-3.48%
Bajaj Hind.	Sell between Rs.190 and Rs.200. SL-Rs.210. TGT-Rs.160.	Target Reached.	+35.	+17.95%
Rel. Comm.	Buy between Rs.370 and Rs.390. SL-Rs.360. TGT-Rs.430.	Target reached.	+Rs.45.	+11.68%
BHEL	Sell between Rs.2100 and Rs.2120. SL-Rs.2150. TGT-Rs.1950.	Target Reacged.	+Rs.160.	+7.58%
Tisco	Sell between Rs.430 and Rs.440. SL-Rs.450. TGT-Rs.390.	Close trade.	-	-
IDBI	Buy between Rs.70 and Rs.74. SL-Rs.65. TGT-Rs.95.	Close trade.	-	-
Century Text.	Buy between Rs.520 and Rs.525. SL-Rs.500. TGT-Rs.575.	Book Profits.	-	-
ACC	Buy between Rs.710 and Rs.718. SL-Rs.690. TGT-Rs.785.	Not Triggered.	-	-
Dabur	Sell between Rs.85 and Rs.87. SL-Rs.92. TGT-Rs.74.	SL Hit.	-Rs.6.	-6.97%
HDFC Bank.	Sell on breach of Rs.885 upto Rs.880. SL-Rs.925. TGT-Rs.800.	Not Triggered.	-	-
ICICI Bank	Sell between Rs.835 and Rs.845. SL-Rs.875. TGT-Rs.760.	SL Hit.	-Rs.35.	-4.16%
Balaji Tele	Buy between Rs.115 and Rs.118. SL-Rs.110. TGT-Rs.135.	Book Profits.		
IFCI	Buy between Rs.28 and Rs.30. SL-Rs.25. TGT-Rs.40.	Not Triggered.		
VSNL	Buy between Rs.405 and Rs.410. SL-Rs.380. TGT-Rs.465.	-	-	-
HLL	Buy between Rs.185 and Rs.195. SL-Rs.180. TGT-Rs.210.	Book Profits.	-	-

### Call Tracker:

Scrip	Original Call Details	Fresh Call
Hind. Lever	Buy between Rs.200 and Rs.203. SL-Rs.198. TGT-Rs.210.	-
ITC	Buy between Rs.143 and Rs.146. SL-Rs.140. TGT-Rs.158.	-
IDEA	Sell between Rs.97 and Rs.99. SL-Rs.101. TGT-Rs.89.	-

#### Note:

- Short-term trading on the basis of technical is a high risk and skill oriented venture and may result in huge losses also. Traders doing so are doing at their own risk. We are not responsible for any damages.
- Mostly it is not advisable to buy/sell a stock if it touches the target price first and then comes within recommended range of buy/sell.
- Never wait for actual target to be reached book profits slightly before target price, if prices show sluggishness. Always follow stop losses to avoid larger losses.

### Support Resistance – Nifty 50

Name	Close	R 2	R1	Pivot Point	S 1	S 2
ABB	3549.70	3606.57	3578.13	3546.57	3518.13	3486.57
ACC	735.25	752.35	743.80	737.40	728.85	722.45
BAJAJAUTO	2427.60	2471.20	2449.40	2427.20	2405.40	2383.20
BHARTIARTL	763.90	775.97	769.93	762.97	756.93	749.97
BHEL	2261.35	2320.05	2290.70	2270.35	2241.00	2220.65
BPCL	302.75	327.25	315.00	308.05	295.80	288.85
CIPLA	236.80	240.80	238.80	236.45	234.45	232.10
DABUR	95.00	99.53	97.27	93.28	91.02	87.03
DRREDDY	728.25	748.62	738.43	724.22	714.03	699.82
GAIL	264.55	277.52	271.03	266.32	259.83	255.12
GLAXO	1119.90	1171.30	1145.60	1114.30	1088.60	1057.30
GRASIM	2092.90	2142.97	2117.93	2079.97	2054.93	2016.97
GUJAMBCEM	106.70	111.37	109.03	105.57	103.23	99.77
HCLTECH	291.40	311.53	301.47	292.73	282.67	273.93
HDFC	1519.80	1559.03	1539.42	1520.33	1500.72	1481.63
HDFCBANK	954.15	985.92	970.03	954.02	938.13	922.12
HEROHONDA	688.75	721.45	705.10	683.15	666.80	644.85
HINDALCO	130.30	132.43	131.37	129.93	128.87	127.43
HINDLEVER	205.20	211.07	208.13	203.57	200.63	196.07
HINDPETRO	247.80	257.43	252.62	248.43	243.62	239.43
ICICIBANK	853.35	900.08	876.72	840.18	816.82	780.28
INFOSYSTCH	2018.65	2049.15	2033.90	2014.45	1999.20	1979.75
IPCL	270.80	286.23	278.52	272.28	264.57	258.33
ITC	151.15	157.95	154.55	149.85	146.45	141.75
JETAIRWAYS	633.20	676.40	654.80	641.40	619.80	606.40
LT	1620.10	1653.90	1637.00	1619.10	1602.20	1584.30
M&M	780.40	806.70	793.55	772.55	759.40	738.40
MARUTI	820.20	853.40	836.80	813.40	796.80	773.40
MTNL	146.75	151.78	149.27	146.73	144.22	141.68
NATIONALUM	233.65	240.08	236.87	231.78	228.57	223.48
ONGC	880.80	892.50	886.65	879.15	873.30	865.80
ORIENTBANK	187.65	193.48	190.57	188.78	185.87	184.08
PNB	474.20	485.73	479.97	474.23	468.47	462.73
RANBAXY	351.90	361.53	356.72	350.18	345.37	338.83
RCOM	420.90	428.70	424.80	421.50	417.60	414.30
REL	494.20	507.40	500.80	493.40	486.80	479.40
RELIANCE	1370.30	1387.83	1379.07	1366.13	1357.37	1344.43
SAIL	114.30	118.73	116.52	113.28	111.07	107.83
SATYAMCOMP	470.35	482.12	476.23	466.12	460.23	450.12
SBIN	994.45	1011.25	1002.85	994.60	986.20	977.95
SIEMENS	1090.70	1107.57	1099.13	1088.57	1080.13	1069.57
SUNPHARMA	1056.45	1111.48	1083.97	1036.98	1009.47	962.48
SUZLON	1001.50	1027.70	1014.60	1004.80	991.70	981.90
TATAMOTORS	728.20	742.40	735.30	725.90	718.80	709.40
TATASTEEL	449.65	459.48	454.57	446.08	441.17	432.68
TATAPOWER	509.30	531.73	520.52	511.28	500.07	490.83
TCS	1233.85	1270.85	1252.35	1236.30	1217.80	1201.75
VSNL	402.30	413.20	407.75	403.95	398.50	394.70
WIPRO	559.40	588.40	573.90	565.20	550.70	542.00
ZEETELE	250.70	256.87	253.78	249.92	246.83	242.97

### Research Team

**D. D. Sharma - Head**  
[ddsharma@rathi.com](mailto:ddsharma@rathi.com)

**Mayur Shah**  
Head Technical Analyst  
[mayurshah@rathi.com](mailto:mayurshah@rathi.com)

**Pramit Sabharwal**  
Sr. Technical Analyst /  
Sr. Derivative Analyst  
[pramitsabharwal@rathi.com](mailto:pramitsabharwal@rathi.com)

**A. K. Prabhakar**  
Sr. Technical Analyst  
[Prabhakar@rathi.com](mailto:Prabhakar@rathi.com)

**Shishir Kedia**  
Technical Analyst  
[shishirkedia@rathi.com](mailto:shishirkedia@rathi.com)

P.S. In case of clarification, please feel free to email at [response@rathi.com](mailto:response@rathi.com)

Pivot Point: An Intra- Day Trading tool. PP: Pivot Point: This is trigger point for Intra Day buy/sell based on the price range of the previous day. R1: Resistance one: 1st Resistance over PP. R2: Resistance two: 2nd Resistance over R1. S1: Support one: 1st support after PP. S2: Support Two: 2nd support after S1. As per the tool, the trader should take BUY position just above PP and keep the stop loss of PP and the first target would be R1. If R1 is crossed then R2 becomes the next target with the stop loss at R1. Similarly if price goes below PP, the trader should SELL and keep the PP as Stop loss and the first target would be S1. If S1 is crossed then S2 becomes the next target with the stop loss at S1. This is an intra-day tool. The key to use of this tool is the - use of suggested STOP LOSS.

**DISCLAIMER:** This report has been issued by Anand Rathi Securities Limited (ARSL), which is regulated by SEBI. The information herein was obtained from various sources; we do not guarantee its accuracy or completeness. Neither the information nor any opinion expressed constitutes an offer, or an invitation to make an offer, to buy or sell any securities, options, future or other derivatives related to such securities ("related investment"). ARS and its affiliated may trade for their own accounts as market maker/ jobber and /or arbitrageur in any securities of this issuer(s) or in related investments, and may be on the opposite side of public orders. ARS, its affiliates, directors, officers, and employees may have a long or short position in any securities of this issuer(s) or in related investment banking or other business from, any entity mentioned in this report. This research report is prepared for private circulation. It does not have regard to the specific investment objectives, financial situation and the particular needs of any specific person who may receive this report. Investors should seek financial situation and the particular needs of any specific investing in any securities or investment strategies discussed or recommended in this report and should understand that statements regarding future prospects may not be realized. Investors should note that income from such securities, if any, may fluctuate and that each security's price or value may rise or fall. Past performance is not necessarily a guide to future performance. Foreign currency rates of exchange may adversely affect the value, price or income of any security or related investment mentioned in this report.