

Trace & Track Report

FOR PRIVATE CIRCULATION ONLY

28 January 2008

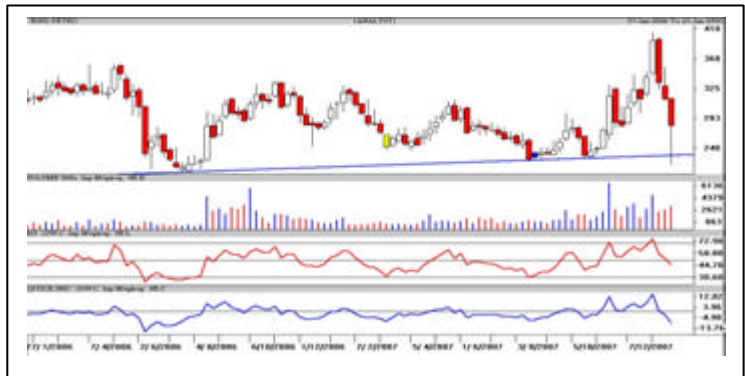


Hind Petro (272.75)

The weekly chart of Hind Petro shows a vertical decline from Rs.405.90 to Rs.218. In the excess fall it has hit the support line in blue. Short term trend has turned down, immediate support is pegged at Rs.252 while crucial support is at Rs.218-225. A sustained move above Rs.280 (in close) may test Rs.312 and Rs.335 in the short to medium term.

Resistance: 292, 312, 335.

Support : 258, 239, 225.

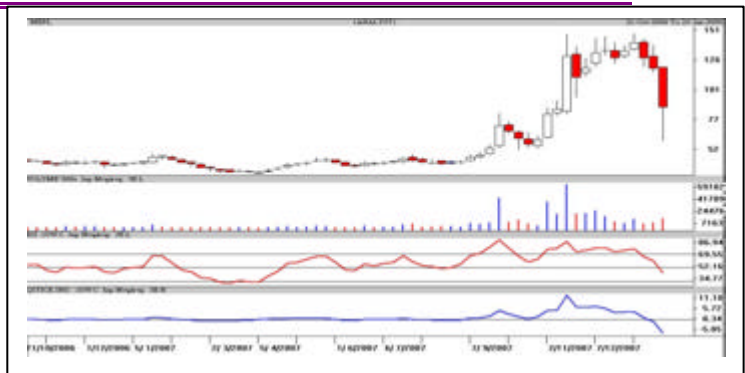


MRPL (87.85)

MRPL has declined vertically from Rs.149 to Rs.60. Short term and medium term supports have been breached; one can expect a pullback. If it holds Rs.81 one could expect a bounce up to Rs.93 and Rs.105 in an optimistic scenario.

Resistance: 90.50, 93, 105.

Support : 83.15, 81, 78.60.



Note: All the scrips mentioned are meant for High risk momentum players as the risk to reward is even. One should keep booking profits and stop loss is must to quantify the risk involved.

Intra Week Range for Momentum stocks 28/01/2008 – 01/02/2008

Scrip	Close	R1	R2	S/R	S2	S1
ADLABS FILMS	1214.55	1330.80	1779.50	998.40	217.30	549.70
ALSTOM POWER	749.70	819.80	1024.90	684.90	344.90	479.80
AXIS BANK	1098.30	1125.10	1264.55	1012.55	760.55	873.10
BIOCON LTD.	417.55	466.00	575.00	405.50	236.00	296.50
DECCAN AVIAT	192.75	217.90	285.85	175.05	64.25	107.10
DIVI'S LAB.	1467.60	1534.75	1819.20	1317.55	815.90	1033.10
EDUCOMP SOLN	4149.80	4474.70	5437.05	3837.35	2237.65	2875.00
IDEA CELL	118.90	127.40	150.20	113.20	76.20	90.40
IVRCL INFRAS	470.05	492.50	581.25	426.25	271.25	337.50
JAIPRA	386.10	405.50	490.75	339.75	188.75	254.50
KOTAK MAH.BK	1087.85	1118.95	1309.50	959.45	609.40	768.90
PRAJ IND.LTD	165.80	182.90	234.45	148.45	62.45	96.90
REL PET	173.00	191.50	251.50	150.00	48.50	90.00
RIL NAT RES	144.35	174.70	254.85	124.85	-5.15	44.70
UNITD SPR	1719.15	1787.10	2063.55	1578.55	1093.55	1302.10
UNITECH LTD	439.00	454.45	546.20	378.25	210.30	286.50

Disclaimer Attached:

This document has been prepared by Religare Securities Limited (Technical Research Department). This is not an offer to buy or sell or the solicitation of an offer to buy or sell any security or to participate in any particular trading strategy or as an official confirmation of any transaction. The views expressed are those of analyst. The information contained herein is from publicly available data or other sources believed to be reliable or developed through analysis. No representation or warranty, express or implied, is made as to the accuracy, completeness or fairness of the information and opinions contained in this document. Religare accepts no obligation to correct or update the information or opinions in it. Religare may discontinue research coverage of a subject company or change the opinion(s) without notice. The investment discussed or views expressed may not be suitable for all investors and certain investors may not be eligible to purchase or participate in some or all of them. Religare recommends that investors independently evaluate particular investments and strategies. The user assumes the entire risk of any use made of this information. Neither Religare nor any of its affiliates, directors, employees, agents or representatives shall be liable for any damages whether direct, indirect, special or consequential including lost revenue or lost profits that may arise from or in connection with the use of the information. Religare and its affiliates, officers, directors, and employees may from time to time, effect or have effected an own account transaction in, or deal as principal or agent in or for the securities mentioned in this document. They may perform or seek to perform investment banking or other services for, or solicit investment banking or act as advisor or lender / borrower to such company (ies) or have other potential conflict or interest with respect to any recommendation and related information and opinions. The recipient should take this into account before interpreting the document. This report is not directed or intended for distribution, publication, availability or use by, any person or entity who is a citizen or resident of or located in any locality, state, country or other jurisdiction, where such distribution, publication availability or use would be contrary to law regulation or which would subject Religare and affiliates to any registration or licensing requirements within such jurisdiction, persons in whose possession this document comes, should inform themselves about and observes, any such restrictions. **Copy right in this document vests exclusively with Religare.** This information should not be reproduced or redistributed or passed on directly or indirectly in any form to any other person or published, copied, in whole or in part, for any purpose, without prior written permission from Religare. We do not guarantee the integrity of any e-mails or attached files and are not responsible for any changes made to them by any other person.