

NIFTY 6159.30

Intra Day	
Volatility	152 pts
S1	6082.38
S2	5958.81
R1	6221.28
R2	6283.00

SENSEX 20375.87

Intra Day	
Volatility	344 pts
S1	20280.13
S2	20141.16
R1	20514.86
R2	20653.86

TREND Direction

Short Term	UP
Medium Term	UP
Long Term	UP

AVERAGES

Daily	
13 sma	5865.71
34 sma	5813.40
89 sma	5172.50

NIFTY Intra Week

Volatility	331 pts
S1	5864.45
S2	5665.77
R1	6092.73
R2	6151.95



Source: Analyst

S&P Nifty (6159.30 points)

(+62.05 pts)

The Nifty surged another 60 points in close as the mighty Bulls firing from all cylinders. The Bears had very little to cherish from the morning dip. The Bulls remained closely knit and quickly launched a strong assault. The Telecom & Media scrips steered the limelight while the Oil, Realty and Metals sector continue to lead the rally. Heavy weights were rock steady on the back of which the Midcaps are galloping. Volumes were higher than previous session with a strong A/D ratio in favour of the Bulls.

In this process the Nifty has crossed the weekly R2 in just 3 days. This reflects the strength of an upside breakout above 5976 points. Yesterday the Nifty bounced from the trendline in black (5995 points). The Bears have to decisively break below 6053 points to threaten the Bulls while as long as the trendline in blue (5905) holds the Bulls need not worry.

The Nifty touched the 6175 points resistance as mentioned in the previous report. Intraday, pivot in the Nifty is pegged at 6111 points and resistance in rallies is pegged at 6220 points and up at 6258 points. Crucial support is pegged at 6082 points. A super human effort is needed on the part of the Bears to overcome the mighty Bulls.

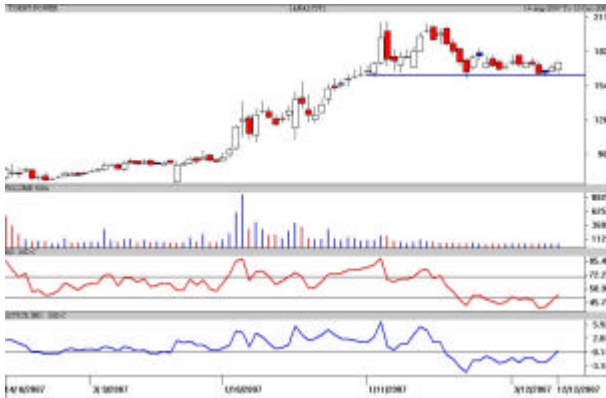
Technical recommendations

Torrent Power

Buy for Short term

CMP:174.70

Tgt:185 & 198



The daily candlestick chart of Torrent Power shows that it is holding on to the trendline support in blue at Rs.162. One can buy in small quantities at current levels as well as in declines around Rs.168 with a strict stop loss below Rs.163 in close for a target of Rs.185 and Rs.198 in the next 7-8 trading sessions which if sustained can attempt new highs in the short term

Avoid gap openings and trade in small quantities only in spot.

Source: Analyst

Himat.Siede (514043)

Buy for Short term

CMP:103.90

Tgt:113-116 & 122



The daily candlestick chart of Himat Siede shows a bullish candle on extremely high volumes. It has broken above the trendline resistance in pink. Support is pegged at Rs.97. Buy in small quantities at current levels as well as in declines around Rs.100 with a strict stop loss below Rs.97 in close for a target of Rs.113-116 which if decisively crossed then Rs.113 in the coming 2-3 weeks.

Avoid gap openings and strictly trade in small quantities.

Source: Analyst

Intraday Range for 13-Dec-2007

Scrip	Close	R1	R2	S/R	S2	S1
A.C.C.	1071.95	1089.30	1106.65	1065.65	1024.65	1048.30
ABB LTD.	1619.15	1643.10	1667.10	1612.55	1558.00	1588.55
BHARTI TELE	1053.50	1073.70	1093.85	1039.85	985.85	1019.70
BHEL	2648.35	2679.60	2710.80	2650.80	2590.80	2619.60
BOM DYEING	757.45	777.60	797.80	749.80	701.80	729.60
CENTURY TEXT	1129.35	1147.90	1166.50	1116.50	1066.50	1097.90
HIND.LEVER	210.40	212.30	214.15	209.65	205.15	207.80
ICICI BANK	1290.30	1313.00	1335.70	1292.10	1248.50	1269.40
INFOSYS TECH	1684.80	1723.70	1762.55	1690.85	1619.15	1652.00
LARSEN & TOU	4283.85	4329.90	4375.95	4264.95	4153.95	4218.90
MAHA.TELE	192.90	198.55	204.25	193.30	182.35	187.60
MARUTIUDYOG	1075.40	1095.90	1116.45	1078.45	1040.45	1057.90
ONGC CORPN	1255.75	1273.90	1292.05	1247.95	1203.85	1229.80
PUNJ LLOYD	556.45	574.30	592.15	540.65	489.15	522.80
RANBAXY LAB.	407.70	411.75	415.80	406.90	398.00	402.85
REL.CAP.	2511.50	2569.00	2626.50	2474.50	2322.50	2417.00
RELIANCE	2886.90	2917.45	2947.95	2881.50	2815.05	2851.00
RENUKA SUGAR	899.25	926.95	954.60	879.50	804.40	851.85
RIL COM VEN	765.75	780.80	795.90	754.40	712.90	739.30
SATYAM COM	431.15	444.50	457.80	436.50	415.20	423.20
SIEMENS LTD.	1963.70	1978.50	1993.25	1955.25	1917.25	1940.50
STATE BANK	2440.40	2463.40	2486.40	2431.70	2377.00	2408.70
STERLITE IND	1102.80	1132.60	1162.45	1102.30	1042.15	1072.45
SUZLONENERGY	2010.15	2037.40	2064.70	2006.70	1948.70	1979.40
TATA MOTORS	769.65	779.80	789.90	768.90	747.90	758.80
TATA STEEL	864.45	885.00	905.50	848.00	790.50	827.50
TCS LTD.	1049.00	1060.30	1071.65	1042.65	1013.65	1031.30
TITAN IND.	1506.45	1521.00	1535.50	1505.50	1475.50	1491.00
VIDESH SANCH	650.90	677.00	703.10	639.00	574.90	612.90
WIPRO LTD.	505.55	512.20	518.85	501.35	483.85	494.70

Intraday Range for 13-Dec-2007

Scrip	Close	R1	R2	S/R	S2	S1
BANKNIFTY	10140.20	10260.00	10319.95	10110.05	9900.15	10050.10
CNXIT	4662.75	4755.30	4801.55	4627.65	4453.75	4581.40
JUNIOR	12251.45	12420.70	12505.35	12185.35	11865.35	12100.70
NIFTY	6189.05	6285.20	6333.25	6153.60	5973.95	6105.55

Amit A. Shitut
(91-20) 3024 0376
amit.shitut@religare.in

RELIGARE RESEARCH

Fundamental Research

Amitabh Chakraborty, CFA, FRM	President - Equity	amitabh.chakraborty@religare.in	(91-22) 6612 4602
Piyush Parag	Auto, Auto Ancillaries, Shipping	piyush.parag@religare.in	(91-22) 6612 4730
Abhishek Banerjee	Auto, Auto Ancillaries, Shipping	abhishek.banerjee@religare.in	(91-22) 6612 4764
Abhishek Agarwal	Agri-commodities, Banking	abhishek.a@religare.in	(91-22) 6612 4753
Dinesh Shukla	Agri-commodities, Banking	dinesh.shukla@religare.in	(91-22) 6612 4739
Ram Patnaik	Agri-commodities, Media, FMCG	ram.patnaik@religare.in	(91-22) 6612 4752
Vinod Nair	Capital Goods, Engineering, Media, Power	nair.vinod@religare.in	(91-22) 6612 4731
Ronald Siyoni	Capital Goods, Engineering	ronald.siyoni@religare.in	(91-22) 6612 4615
Dalpat Mehta	Cement, Textiles	dalpat.mehta@religare.in	(91-22) 6612 4696
Anurag Purohit	Information Technology, Telecom, Power	anurag.purohit@religare.in	(91-22) 6612 4795
Hitesh Punjabi	Information Technology, Telecom	hitesh.punjabi@religare.in	(91-22) 6612 4769
Rahul Singhvi	Metals	rahul.singhvi@religare.in	(91-22) 6612 4749
Rahul Gajare	Power	rahul.gajare@religare.in	(91-22) 6612 4749
Suman Memani	Mid-caps, Construction, Realty	suman.memani@religare.in	(91-22) 6612 4736
Sudeep Anand	Oil & Gas, Chemicals	sudeep.anand@religare.in	(91-22) 6612 4670
Alok Dalal	Pharmaceuticals	alok.dalal@religare.in	(91-22) 6612 4750

Technical Research

Birendrakumar Singh	birendrakumar.singh@religare.in	(91-22) 6612 4657
Vasant Joshi	vasant.joshi@religare.in	(91-22) 6612 4614
Amit Shitut	amit.shitut@religare.in	(91-20) 3024 0376
Kalpana Kabra	kalpana.kabra@religare.in	(91-33) 3051 0947

Derivatives Research

Anil Gupta	anil.g@religare.in	(91-22) 6612 4661
Samir Badami	samir.badami@religare.in	(91-22) 6612 4637
Somendra Agarwal	somendra.agarwal@religare.in	(91-22) 6612 4767

Production

Anisha deSa	anisha.desa@religare.in	(91-22) 6612 4729
R Murali	r.murali@religare.in	(91-22) 6612 4674
Rajesh Mhatre	rajesh.mhatre@religare.in	(91-22) 6612 4728

Administration

Shraddha Hosalkar	shraddha.hosalkar@religare.in	(91-22) 6612 4680
-------------------	-------------------------------	-------------------

Religare Securities

Mumbai: 3rd Floor, Dheeraj Arma, Anant Kanekar Marg, Bandra (East), Mumbai-400 051. Phone: +91 22 66124600 Fax- 66124781

New Delhi: 19, Nehru Place, New Delhi - 110019, Phone: +91 11 30815100.

Disclaimer

Religare Securities Limited (Religare) has two independent equity research groups: Institutional Equities (Institutional Equity Research) and Priority Client Group (Religare Research). Religare Institutional Equity Research is aimed to service the institutional clients of Religare Securities Limited including the Portfolio Management Services of Religare whereas Religare Research is published with a view to service all segments of clients including Retail, HNIs and Institutional clients and PMS.

This document has been prepared by Religare Securities Limited – Priority Client Group. Affiliates of Religare-PCG may have issued other reports that are contrary with and reach different conclusion from the information presented in this report. The views and opinions expressed in this document may or may not match or may be contrary with the views, estimates, rating and target price of the Institutional Equities Research Group of Religare Securities Limited.

We are not soliciting any action based upon this material. This report is not to be construed as an offer to sell or the solicitation of an offer to buy any security in any jurisdiction where such an offer or solicitation would be illegal. It is for the general information of clients of Religare-PCG. It does not constitute a personal recommendation or take into account the particular investment objectives, financial situations, or needs of individual clients. Though disseminated to all the customers simultaneously, not all customers may receive this report at the same time. Religare-PCG will not treat recipients as customers by virtue of their receiving this report. We have reviewed the report, and in so far as it includes current or historical information, it is believed to be reliable. It should be noted that the information contained herein is from publicly available data or other sources believed to be reliable. Neither Religare, nor any person connected with it, accepts any liability arising from the use of this document.

This document is prepared for assistance only and is not intended to be and must not alone be taken as the basis for any investment decision. The investment discussed or views expressed may not be suitable for all investors. The user assumes the entire risk of any use made of this information. The recipients of this material should rely on their own investigations and take their own professional advice. Each recipient of this document should make such investigations as it deems necessary to arrive at an independent evaluation of an investment in the securities of companies referred to in this document (including the merits and risks involved), and should consult its own advisors to determine the merits and risks of such an investment. Price and value of the investments referred to in this material may go up or down. Past performance is not a guide for future performance. Certain transactions -including those involving futures, options and other derivatives as well as non investment grade securities - involve substantial risk and are not suitable for all investors. Reports based on technical analysis centers on studying charts of a stock's price movement and trading volume, as opposed to focusing on a company's fundamentals and as such, may not match with a report on a company's fundamentals.

Opinions expressed are our current opinions as of the date appearing on this material only. We do not undertake to advise you as to any change of our views expressed in this document. While we would endeavor to update the information herein on a reasonable basis, Religare, its subsidiaries and associated companies, their directors and employees are under no obligation to update or keep the information current. Also there may be regulatory, compliance, or other reasons that may prevent Religare and affiliates from doing so. Prospective investors and others are cautioned that any forward-looking statements are not predictions and may be subject to change without notice.

This report is not directed or intended for distribution to, or use by, any person or entity who is a citizen or resident of or located in any locality, state, country or other jurisdiction, where such distribution, publication, availability or use would be contrary to law, regulation or which would subject Religare and affiliates to any registration or licensing requirement within such jurisdiction. The securities described herein may or may not be eligible for sale in all jurisdictions or to certain category of investors. Persons in whose possession this document may come are required to inform themselves of and to observe such restriction.

Religare and its affiliates, officers, directors, and employees may: (a) from time to time, have long or short positions in, and buy or sell the securities thereof, of company (ies) mentioned herein or (b) be engaged in any other transaction involving such securities and earn brokerage or other compensation or act as a market maker in the financial instruments of the company (ies) discussed herein or act as advisor or lender / borrower to such company (ies) or have other potential conflict of interest with respect to any recommendation and related information and opinions. Without limiting any of the foregoing, in no event shall Religare, any of its affiliates or any third party involved in, or related to, computing or compiling the information have any liability for any damages of any kind.

Copyright in this document vests exclusively with Religare. This information should not be reproduced or redistributed or passed on directly or indirectly in any form to any other person or published, copied, in whole or in part, for any purpose, without prior written permission from Religare. We do not guarantee the integrity of any e-mails or attached files and are not responsible for any changes made to them by any other person.

The analyst for this report certifies that all of the views expressed in this report accurately reflect his or her personal views about the subject company or companies and its or their securities, and no part of his or her compensation was, is or will be, directly or indirectly related to specific recommendations or views expressed in this report. Analyst's holding in the stocks mentioned in the report: **NIL**.