

Digital Library Assessment

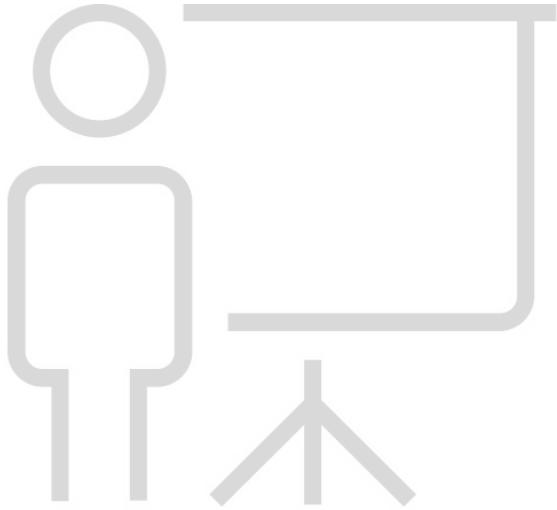
Brainstorming the Year Ahead

DLF Assessment Interest Group
2022 DLF Forum

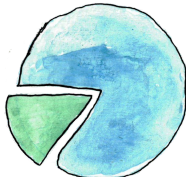
Community Notes: [\[link here\]](#)

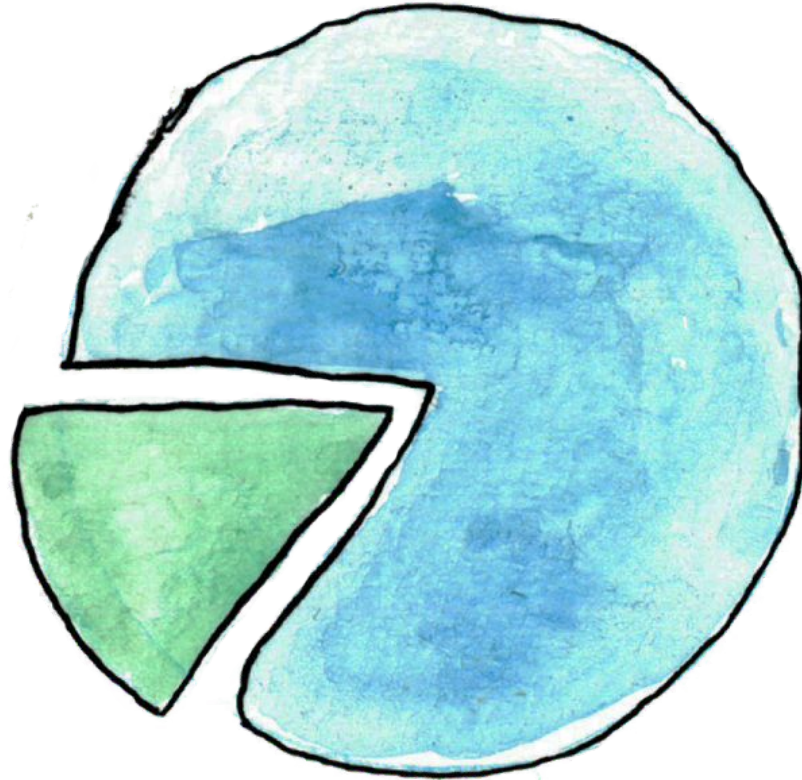


Session Agenda



1. Introduction to AIG (8 minutes)
2. Next thing (time)
3. Next thing (time)





ASSESSMENT

At this session: working groups & representatives

Hannah Scates Kettler and Jennifer

Bradshaw: Cultural

Iowa State University, University of Iowa

Hannah Tarver and Rachel White:

Metadata

University of North Texas, Colgate University

Jess Spencer Waggoner: User

Experience

UC

Santi Thompson: Content Reuse

University of Houston

Julia Simic and Suzanne Preate: Cost

University of Oregon, Syracuse University

AIG session facilitators

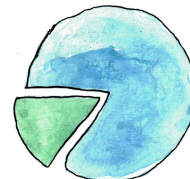
Santi Thompson

University of Houston

Kate Flynn

University of Illinois Chicago/Chicago
Collections Consortium

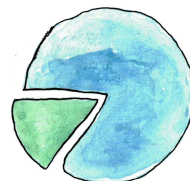
 DIGITAL LIBRARY



ASSESSMENT

Important DLF AIG links

- AIG's Open Science Framework page:
<https://osf.io/7bawc/>
- AIG's DLF webpage:
<https://www.diglib.org/groups/assessment/>
- AIG's wiki:
<https://wiki.diglib.org/Assessment>
- Slack channel:



Questions

- Can you talk about the type of assessment your group does?
- What projects from the past year do you want to highlight?
- What would someone new joining your group need to know?



Metadata Working Group

We explore all aspects of doing or supporting metadata evaluation/assessment activities, such as:

- Providing public-facing information & documentation of work
- Compiling literature, tools, skill-building resources, etc.
- Research around metadata quality benchmarking

Metadata Working Group

For new participants:

- All are welcome
- No active participation or commitment required
- No experience required
- Passion for metadata is encouraged :)

Cultural Assessment Working Group (CAWG)

Assess our institutions' digital collections and their cultural impact

Surface underlying assumptions within our data & practices to better understand the social structures that both influence our work & result from it

Develop rubrics for institutional measurement and analysis of cultural biases and assumptions

Develop tools for identifying and mitigating cultural biases

Cultural Assessment Working Group (CAWG)

For 2023:

Inclusive Metadata Toolkit – in progress

Digitization Workflow Visualization and Interventions

Begin Discovery/UX investigation

Speaker Series

New members welcome: Visit our wiki and join our Google Group

https://wiki.diglib.org/Assessment:Cultural_Assessment

 DIGITAL LIBRARY



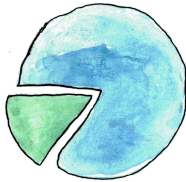
Cost Working Group

-

Cost Working Group

<https://wiki.diglib.org/Assessment:Costs>

 DIGITAL LIBRARY



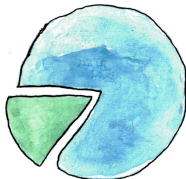
UX Working Group



UX Working Group

<https://osf.io/zfqc3/>

 DIGITAL LIBRARY



ASSESSMENT

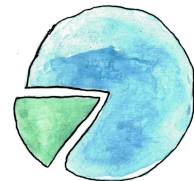
Content Reuse Working Group

- Digital Content Reuse Assessment Framework Toolkit (D-CRAFT): <https://reuse.diglib.org/home/d-craft/>
- IMLS National Leadership Grants for Libraries - **LG-36-19-0036-19**
- Started in July 2019
- Ethical guidelines, recommended practices, and assessment training



<https://wiki.diglib.org/Assessment:User/Reuse>

DLF DIGITAL LIBRARY

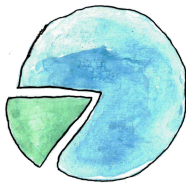


Questions

1. What did you expect to find out about but didn't
2. What questions do you have for the AIG or other attendees?

THANK YOU

All CAWG Participants, especially Alexandra Provo and Morgan McKeehan



Contact information

1. **Hannah Tarver and Rachel White**, Metadata:
hannah.tarver@unt.edu, rwhite@colgate.edu
2. **Jess Spencer Waggoner**, User Experience:
jspencer@ucsc.edu
3. **Hannah Scates Kettler and Jennifer Bradshaw**,
Cultural: hannahsk@iastate.edu, jennifer-bradshaw@uiowa.edu
4. **Julia Simic and Suzanne Preate**, Cost:
jsimic@uoregon.edu, smpreate@syr.edu
5. **Kate Flynn**, DLF AIG: kef@uic.edu
6. **Santi Thompson**, Content Reuse/DLF AIG:
sathompson3@uh.edu

