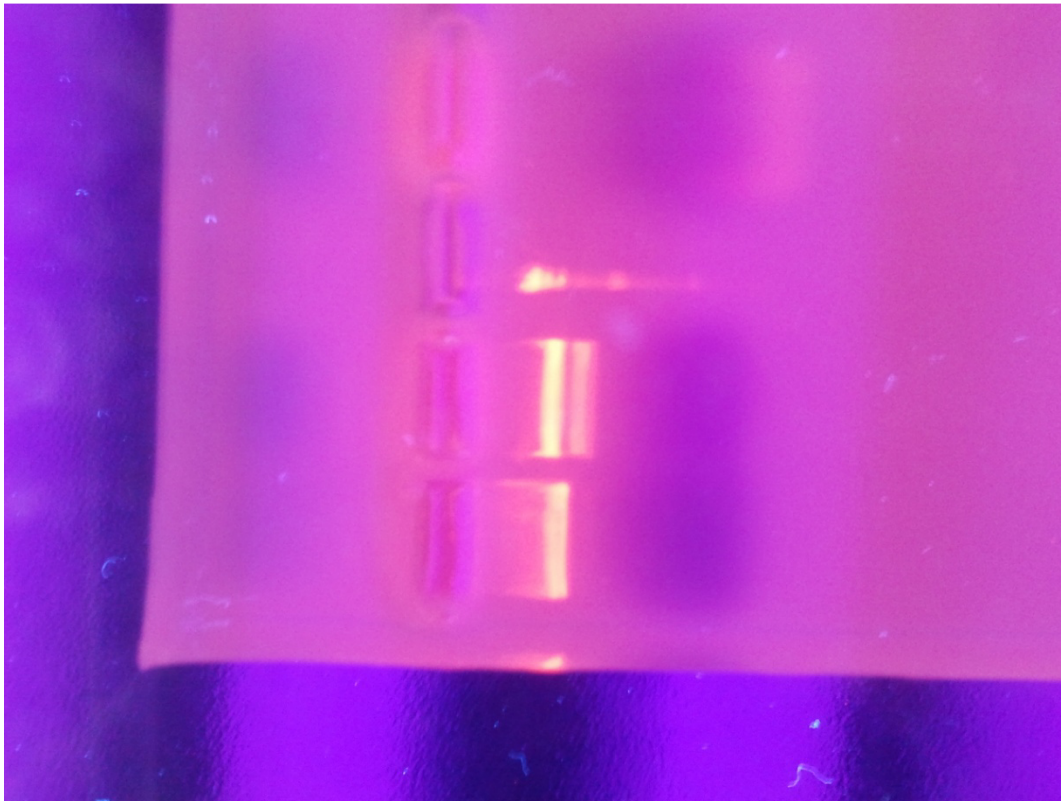




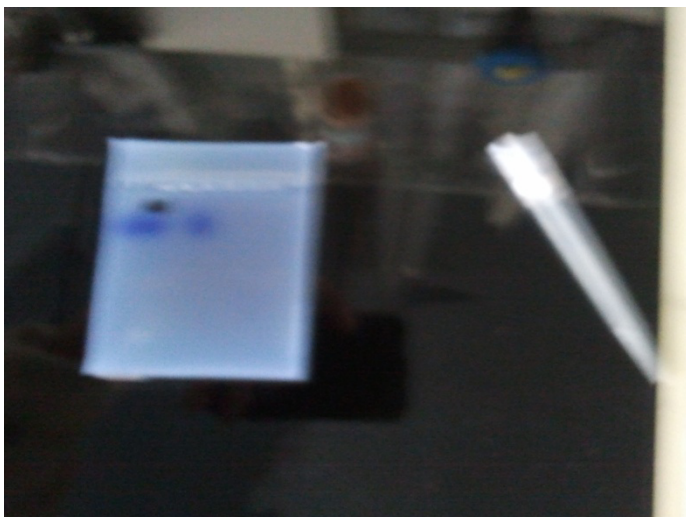
Cheap Gel Extraction using large filter pipette tips



Slots:

- 1 Plasmid pVIB uncut (10 uL; 60ng/uL)
- 2 Plasmid cut (Sall)
- 3 Lambda Hind

Gel Fragment excised and loaded into pipette tip





Cheap Gel Extraction using large filter pipette tips

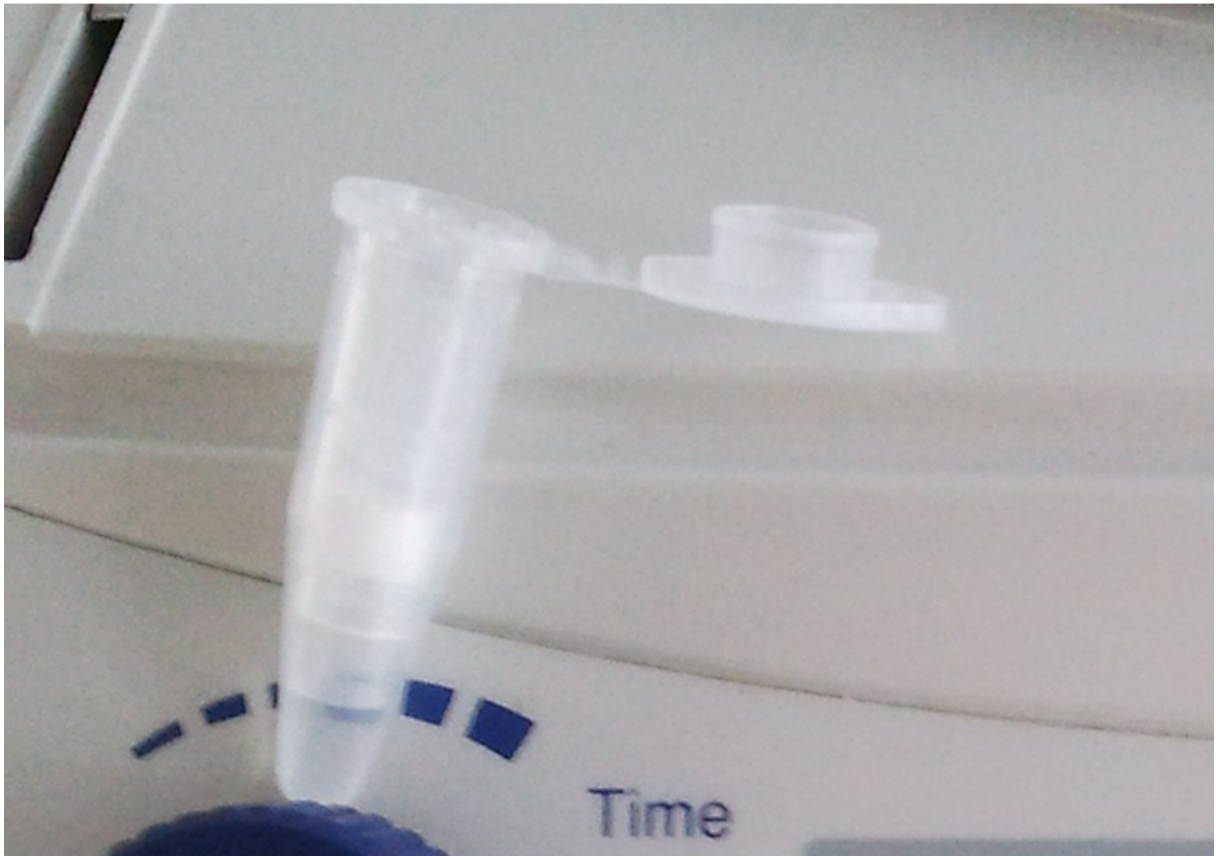
Top of pipette tip cut off; put into eppi



Zentrifuged @ 10.000g, 4 mins

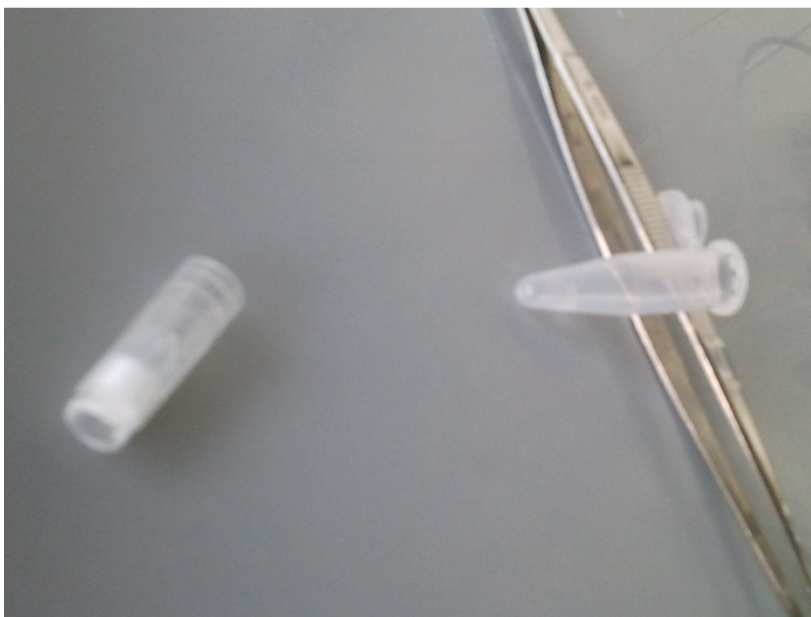


Cheap Gel Extraction using large filter pipette tips



Yield \sim 50 μ L plasmid in TAE buffer

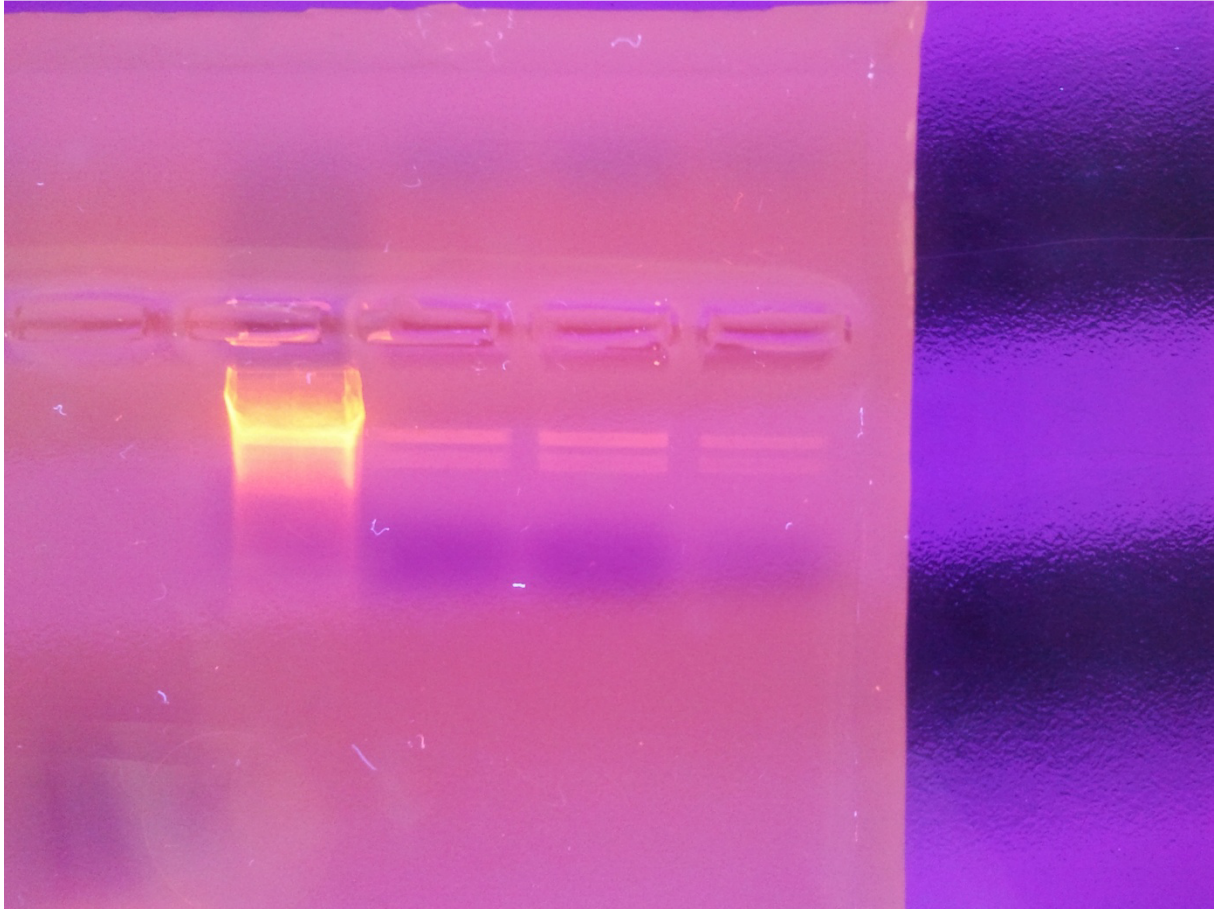
Filter tip, extracted





Cheap Gel Extraction using large filter pipette tips

Result, Lambda Hind Ladder. Blurred Lambda hind due to saving of Loading Buffer?



➔ Fair yield. DNA is less concentrated afterwards. Still, workable concentrations! & Clear bands.