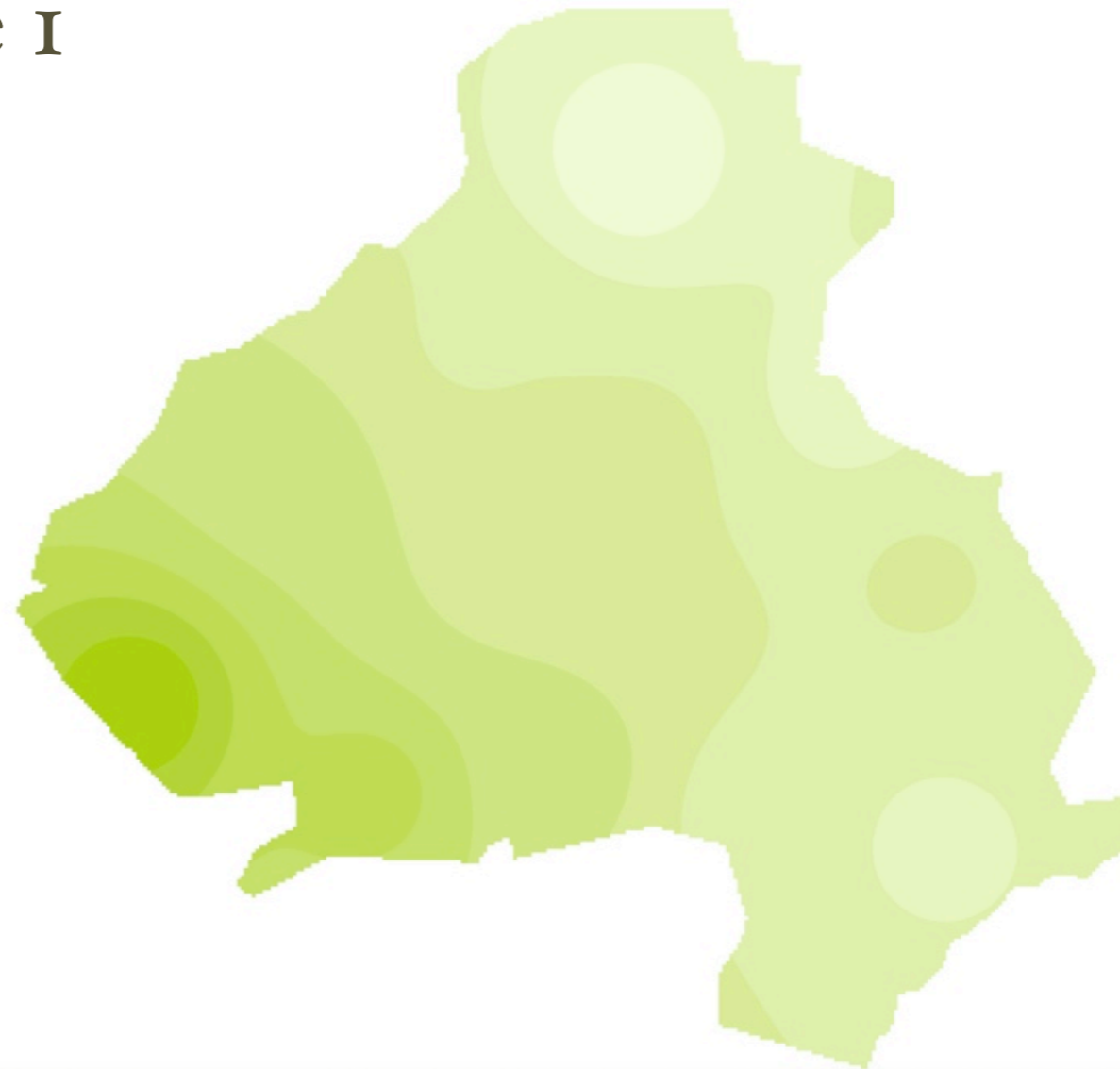
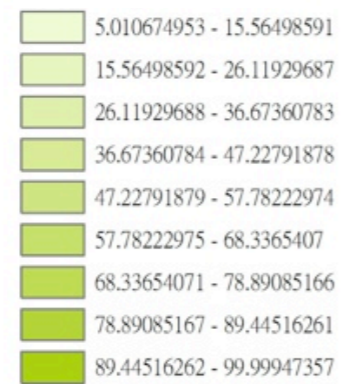


# Habitat Data

Time 1

Legend

habitat value



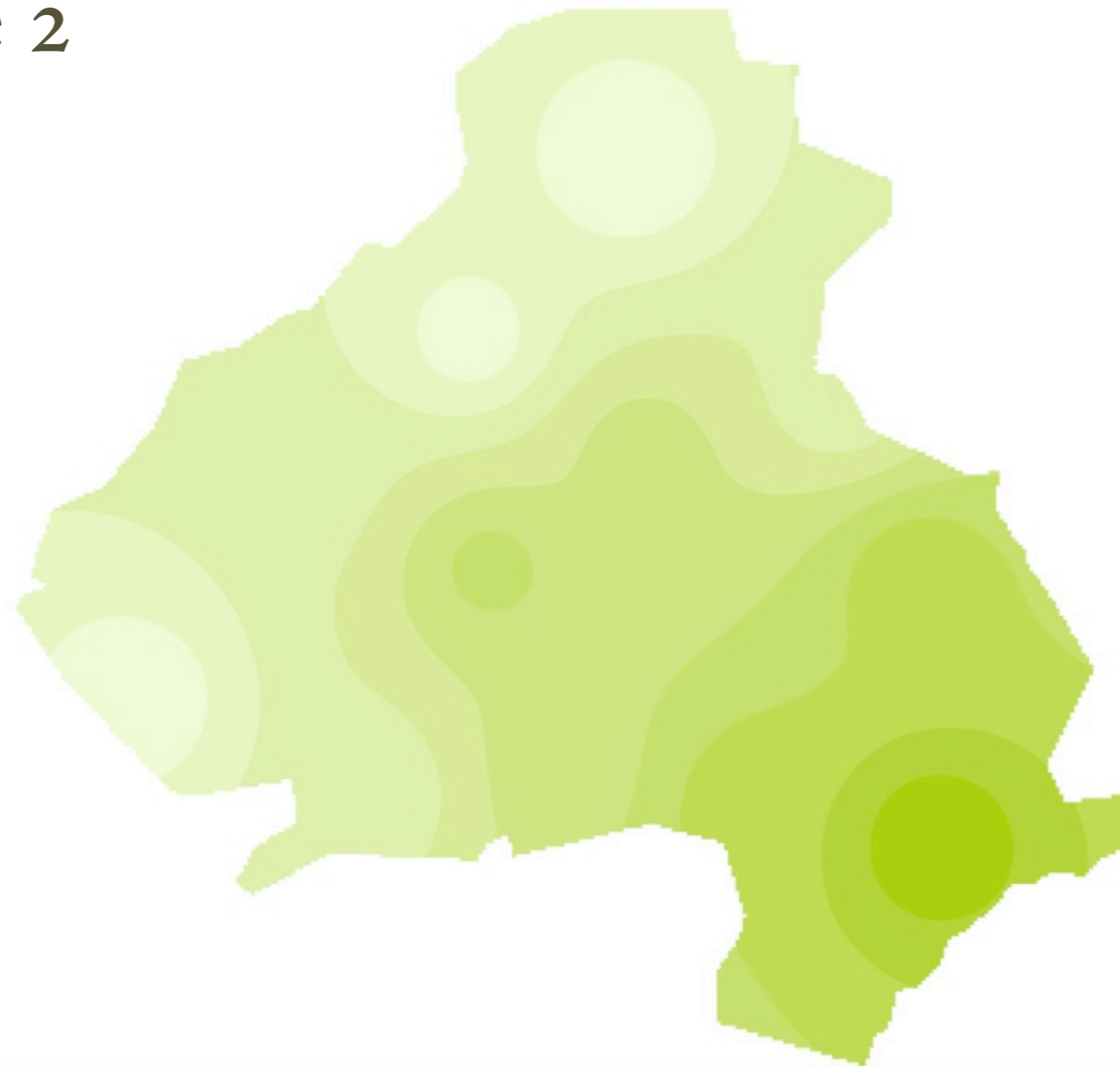
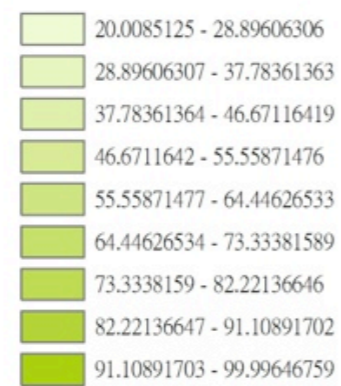


# Habitat Data

Time 2

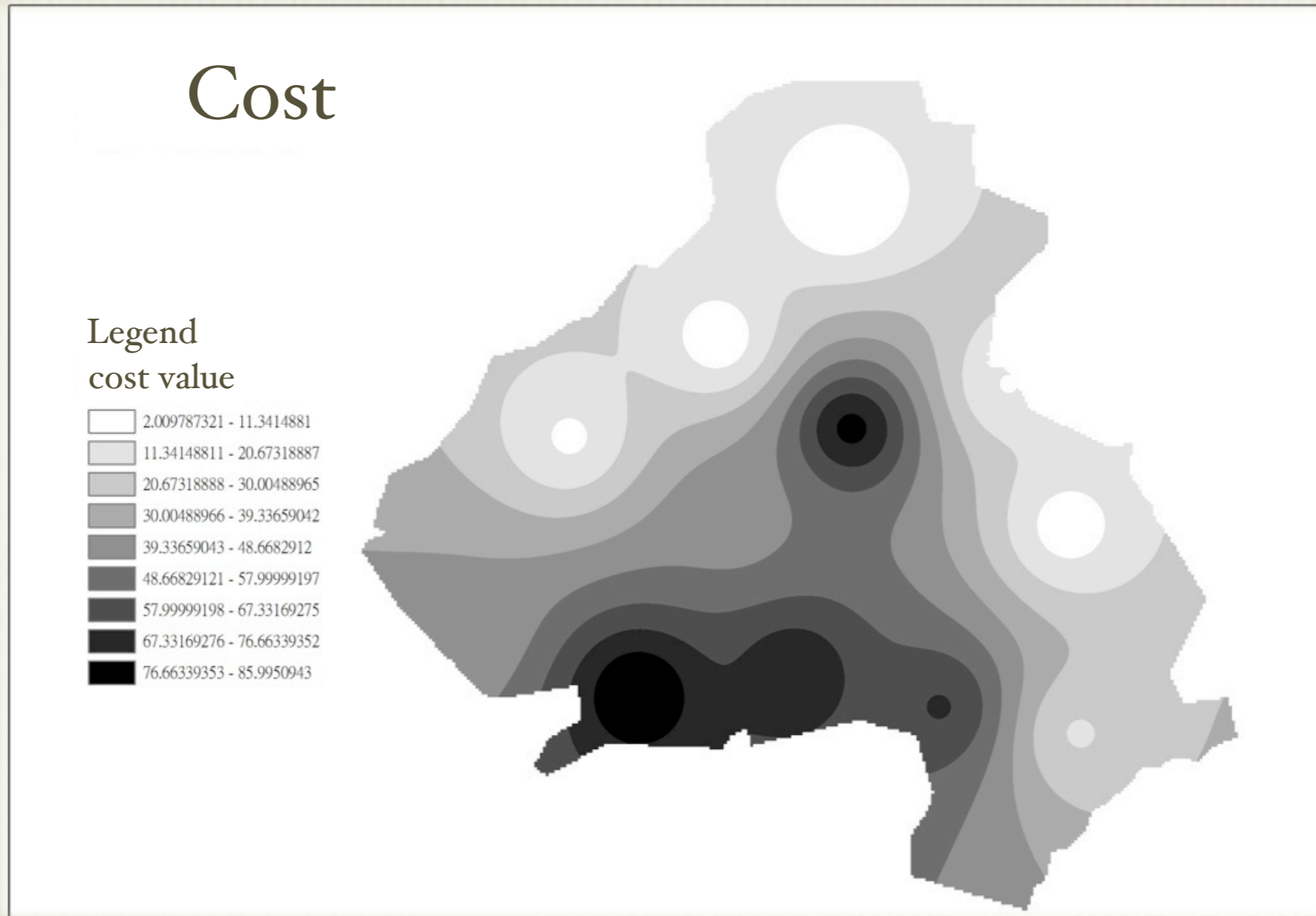
Legend

habitat value





# Cost Data

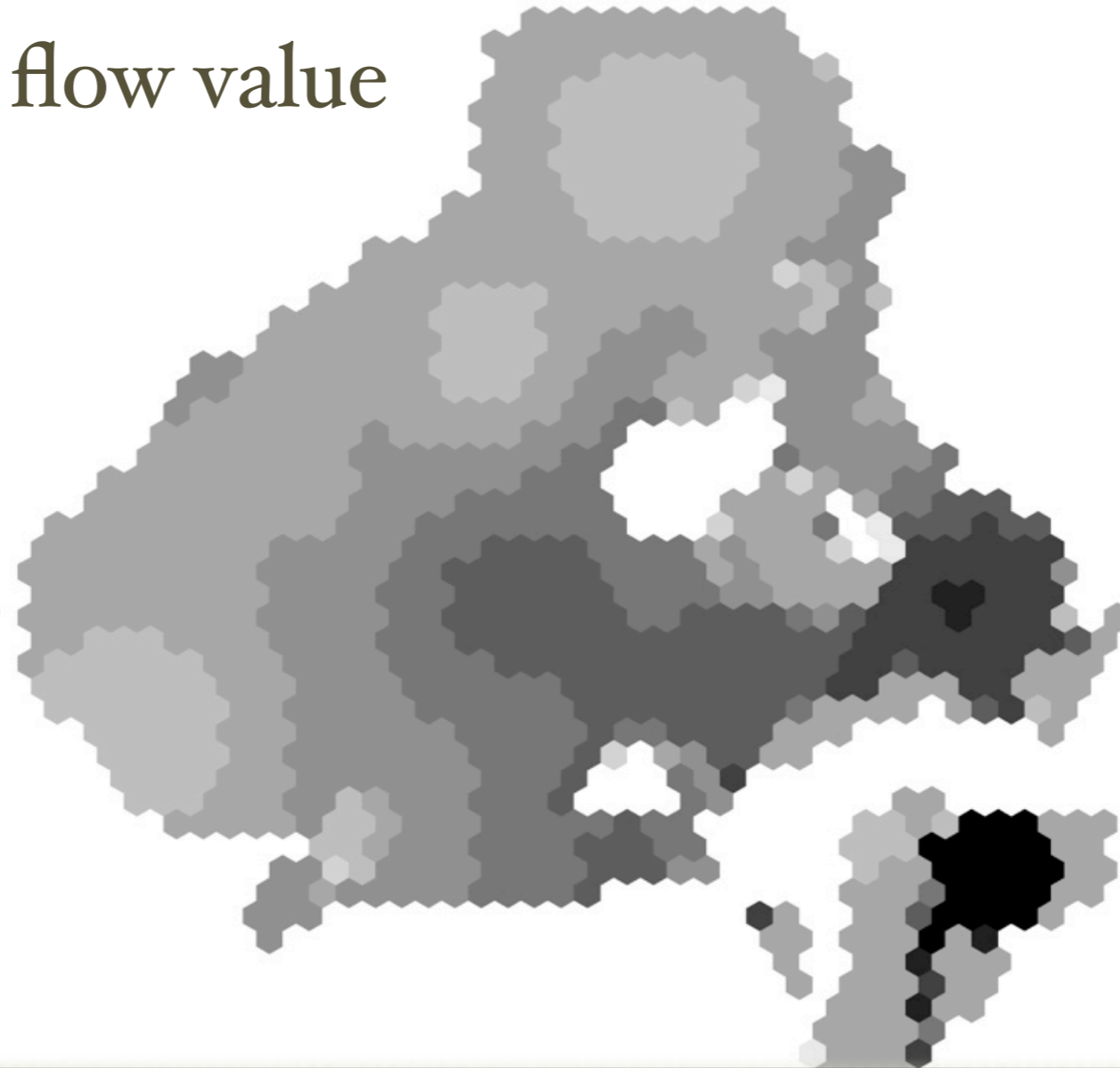
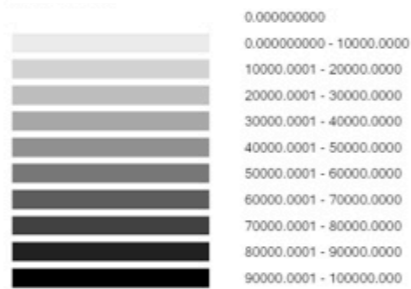




# Result

Outgoing flow value

Legend  
value





# My Question

- What does outgoing flow value mean?
- If it means **the value of flow out of the hexagon**, why those hexagons with high habitat value have a high outgoing flow value?  
(i.e. if the hexagon is a good habitat, why do animals move out?)
- I think 'outgoing flow value' should mean **the value of flow into the hexagon**. Am I right?