

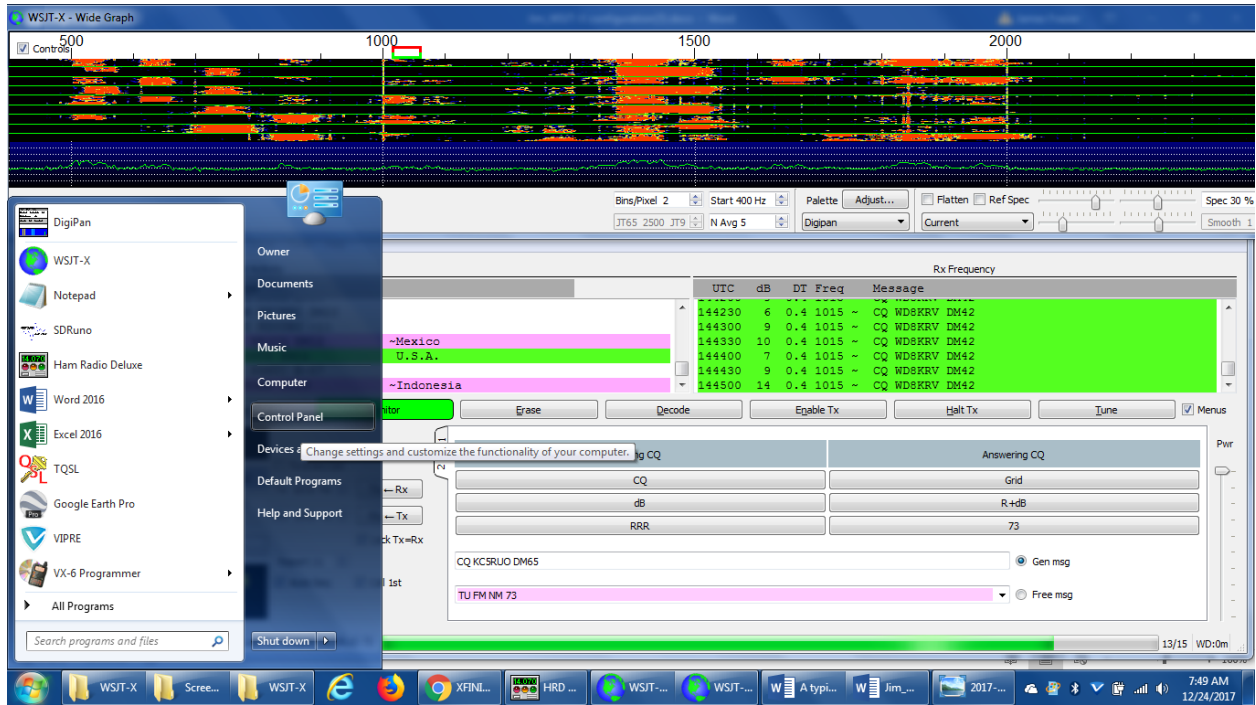
Lockstep Frequency and Time Synchronization

Accurate time and frequency synchronization is critical to successful JT9, JT65, and FT8 communications

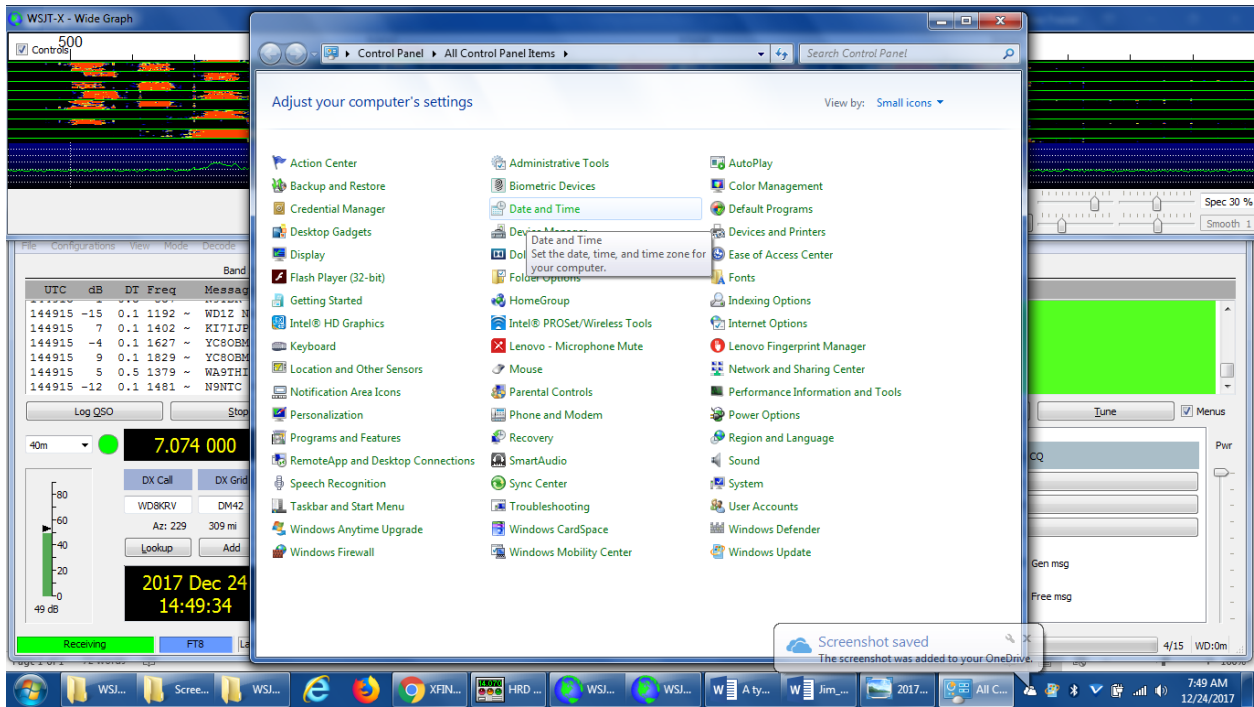
This is how I achieve tight time synchronization

1. Using Verizon Time, smart phone time, cell phone time, Atomic Clock Time or WWV time, set your PC Date and Time to be in step with accurate world time. This the first thing I do on every WSJT-X session before attempting to work QSOs.

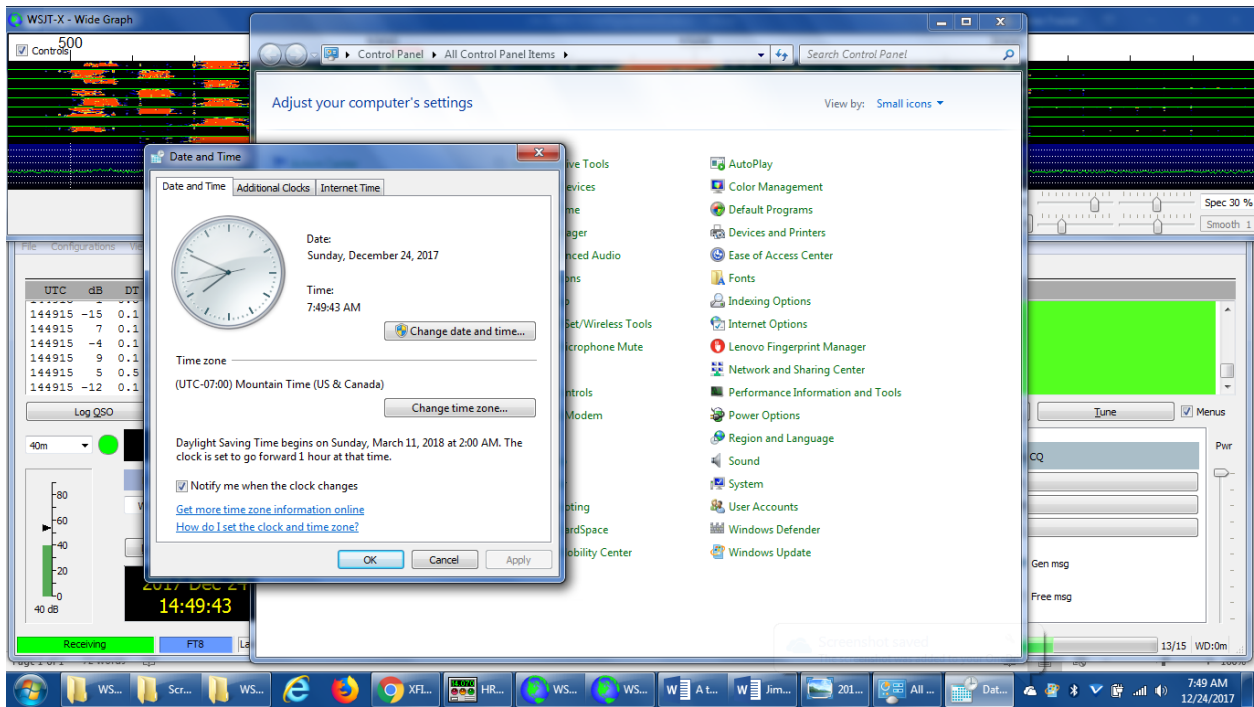
PrtSc1



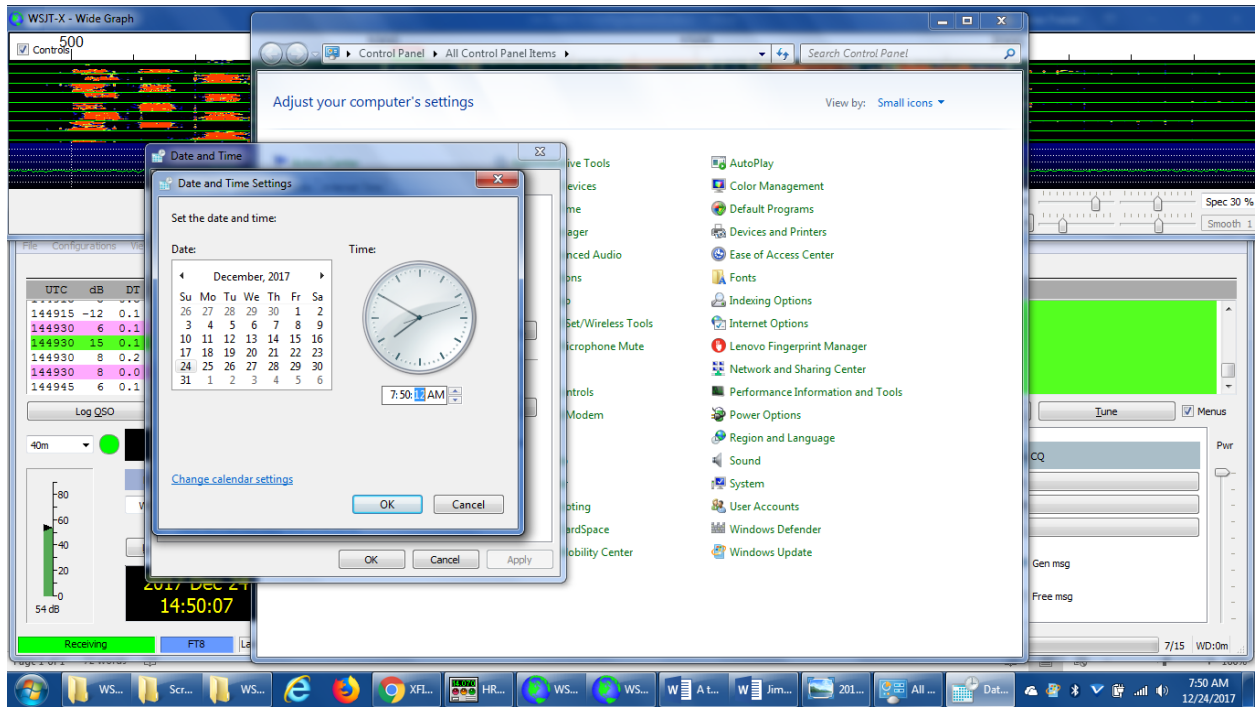
PrtSc2



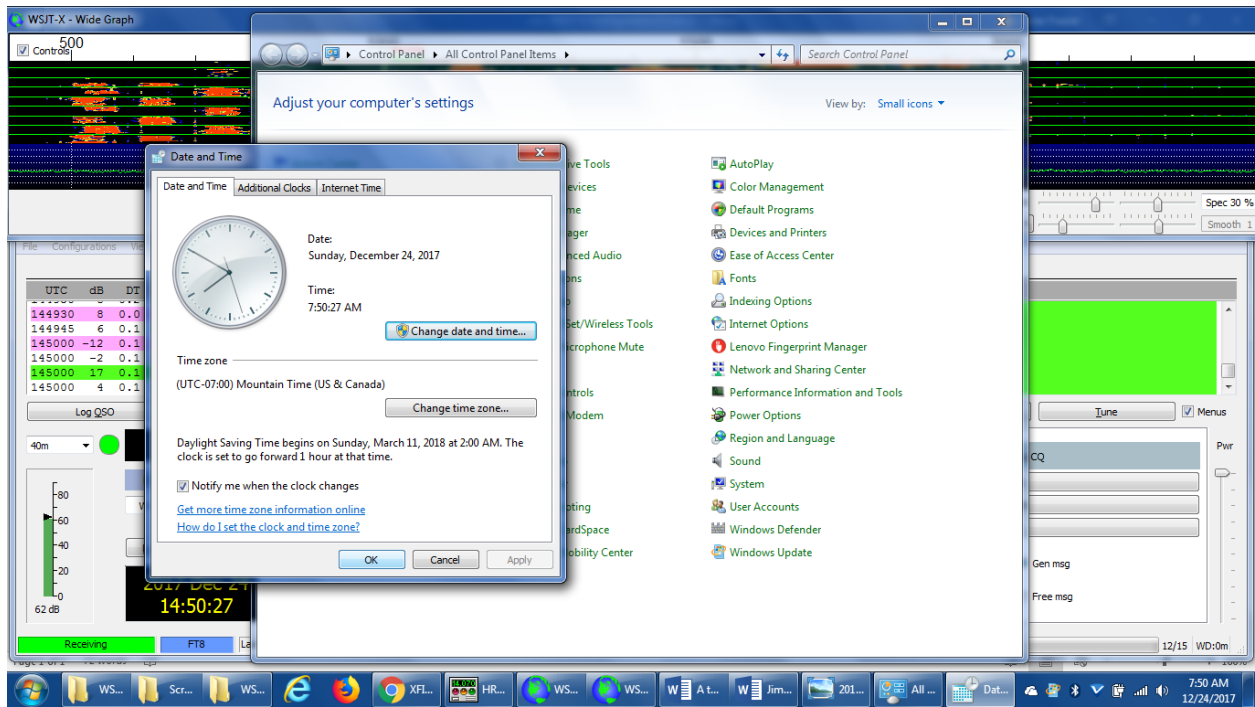
PrtSc3



PrtSc4



PrtSc5



PrtSc6: Done

The screenshot displays the WSJT-X software interface. At the top, a 'Wide Graph' shows a spectrum plot with frequency markers at 500, 1000, 1500, and 2000. Below the graph are various control options like 'Bin/Pxel 2', 'Start 400 Hz', and 'Palette Adjust...'. The main window is divided into two tables: 'Band Activity' and 'Rx Frequency'. The 'Rx Frequency' table is highlighted in green and shows a list of received messages. Below these tables is a control panel with buttons for 'Log QSO', 'Stop', 'Monitor', 'Erase', 'Decode', 'Enable Tx', 'Halt Tx', and 'Tune'. A central display shows the frequency '7.074 000' and a signal strength of '59 dB'. To the right, there are fields for 'Calling CQ', 'Answering CQ', 'CQ', 'Grid', 'dB', 'R+dB', and 'RRR'. A dropdown menu shows 'TU FM NM 73'. At the bottom, a status bar indicates 'Receiving', 'FT8', and 'Last Tx: WD8KRV KC8RUO 73'. The Windows taskbar at the very bottom shows the system clock as 7:51 AM on 12/24/2017.

Band Activity				Rx Frequency					
UTC	dB	DT	Freq	Message	UTC	dB	DT	Freq	Message
145045	-3	-0.4	1889	YCSOBM W6PQL 73	144290	6	0.4	1015	CQ WD8KRV DM42
145100	3	-0.5	720	PSE SPLIT UP	144300	9	0.4	1015	CQ WD8KRV DM42
145100	-5	-0.3	1110	CQ KOTAZ EM09 -U.S.A.	144300	10	0.4	1015	CQ WD8KRV DM42
145100	16	-0.4	1427	TI2RCJ KGSHTH EM02	144400	7	0.4	1015	CQ WD8KRV DM42
145100	7	0.2	1547	KF4IXM KESPYF -10	144430	9	0.4	1015	CQ WD8KRV DM42
145100	5	-0.5	1402	KA8JMW KI7IJP -04	144500	14	0.4	1015	CQ WD8KRV DM42