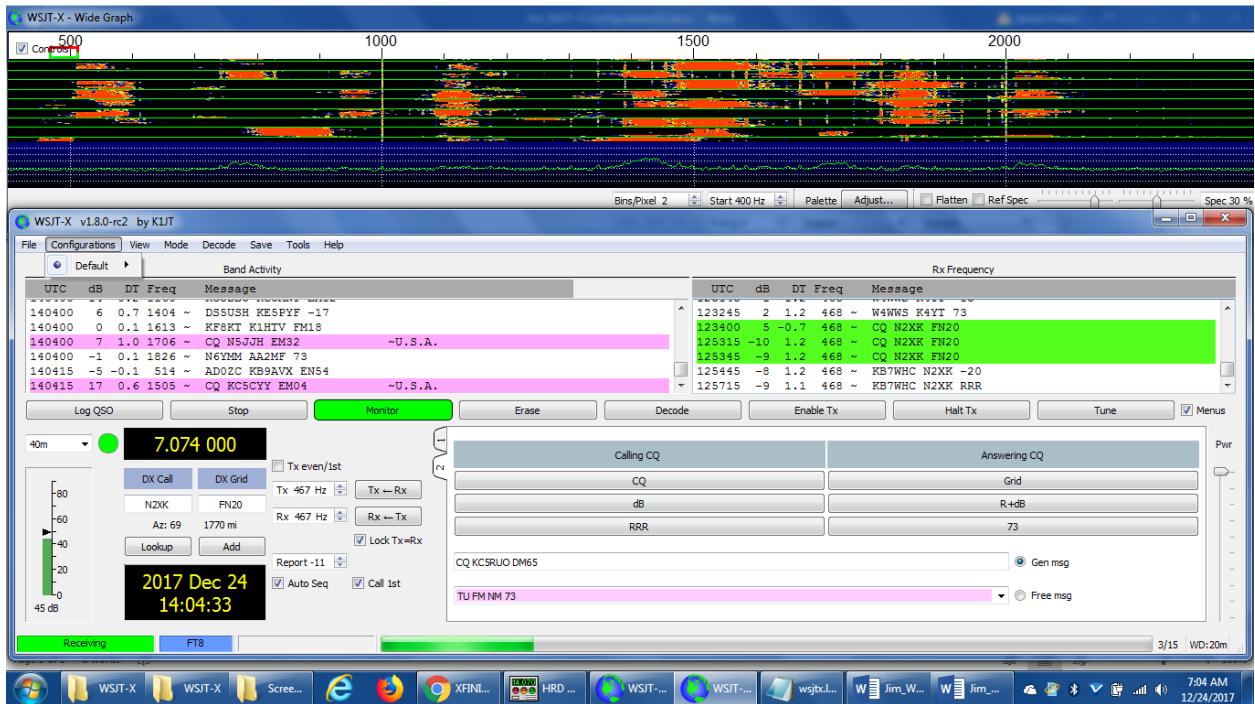
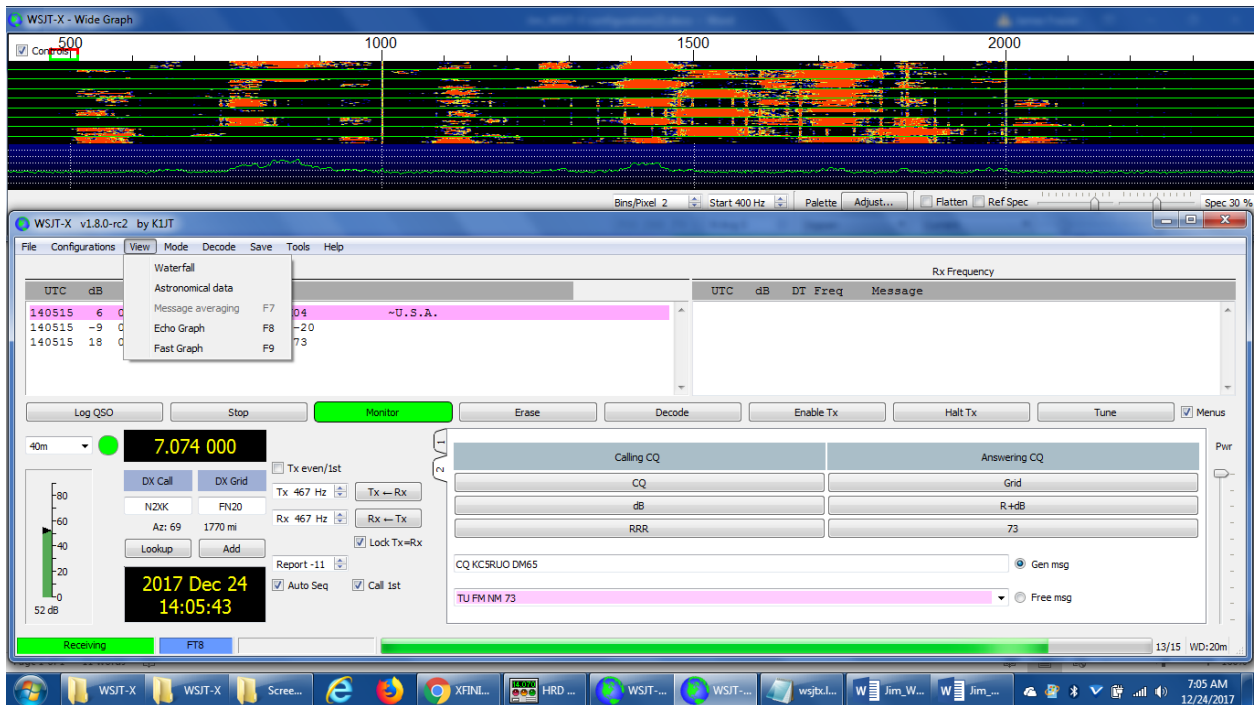


# Jim's WSJT-X Configuration, *the other title bar selections*

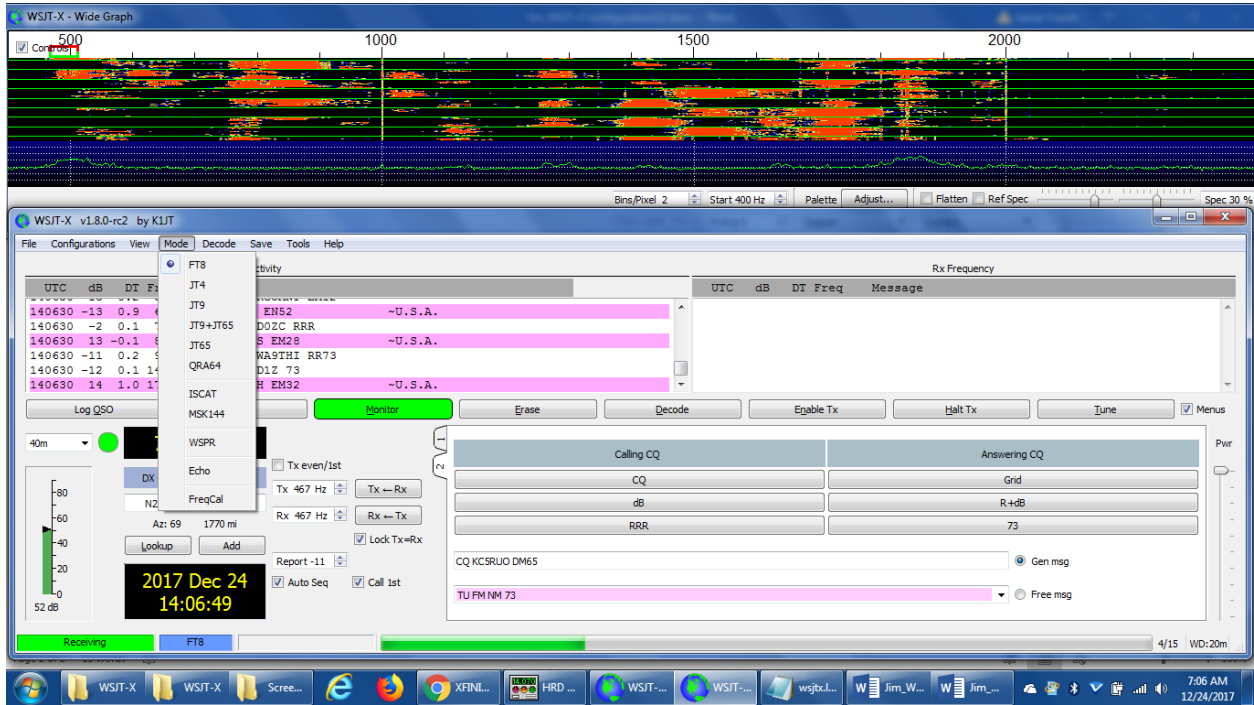
## PrtSc1: Configurations



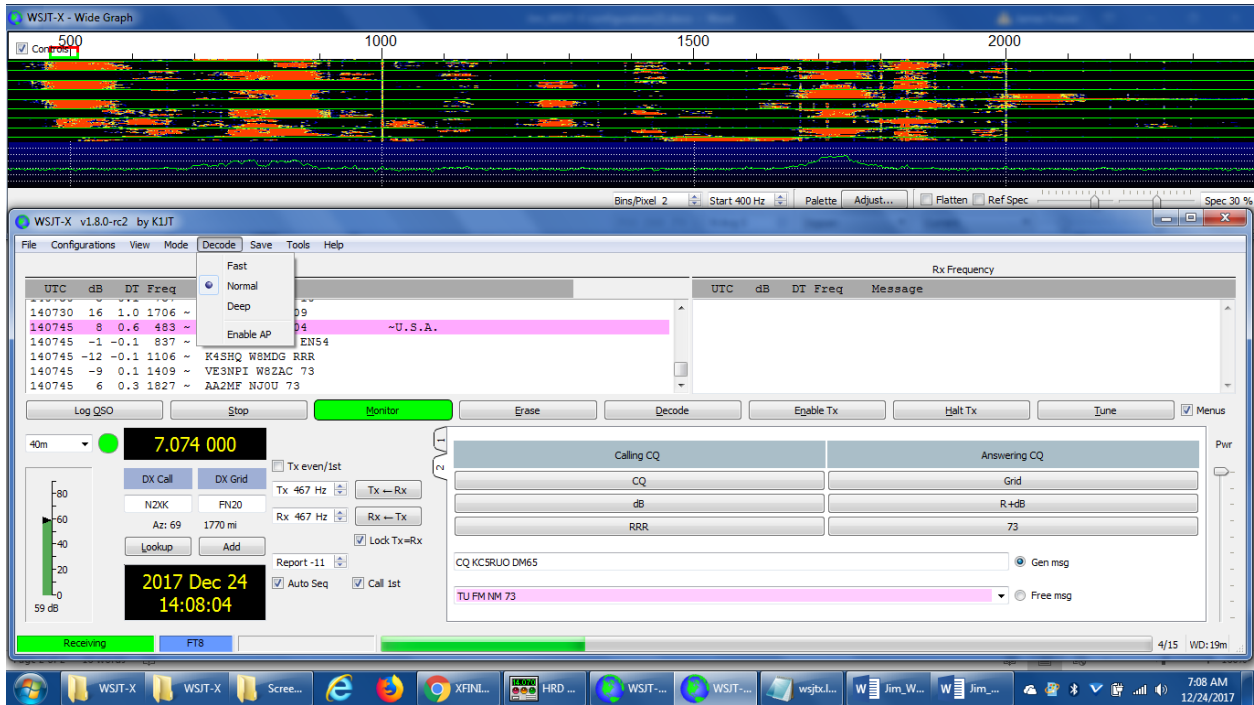
## PrtSc2: View



### PrtSc3: Mode selection



### PrtSc4: Decode



## PrtSc5: Save

WSJT-X v1.8.0-rc2 by K1JT

File Configurations View Mode Decode **Save** Tools Help

Band: None  
 Save decoded  
 Save all

UTC	dB	DT	Freq	Message	Rx Frequency
141215	10	0.2	1093	FM41TY	
141215	3	0.1	1921	AE1T AIOY EN34	
141230	13	0.2	910	WA9NCN AD0ZC -15	
141230	-2	0.1	1254	TI2RCJ K7FB R=21	
141230	1	0.1	1322	CQ WA9THI EM69 U.S.A.	
141230	13	1.0	1706	CQ N5JZH EM32 ~U.S.A.	

Log QSO Stop Monitor Erase Decode Enable Tx Halt Tx Tune  Menus

40m 7.074 000  
 DX Call: N2XK, DX Grid: FN20  
 Az: 69, 1770 mi  
 Lookup Add

2017 Dec 24 14:12:44

Calling CQ: CQ, Answering CQ: Grid  
 dB: R+dB, RRR: 73  
 CQ KC5RUO DM65 (Gen msg)  
 TU FM NM 73 (Free msg)

Receiving FT8 14/15 WD:20m

## PrtSc6: Tools

WSJT-X v1.8.0-rc2 by K1JT

File Configurations View Mode Decode Save **Tools** Help

Band Activity: Erase reference spectrum  
 Measure reference spectrum  
 Measure phase response  
 Equalization tools ...  
 Execute frequency calibration cycle

UTC	dB	DT	Freq	Message	Rx Frequency
141300	-12	1.2	1494	YQ2CTE YB8I	
141300	6	0.1	1641	W0M5C W9YB	
141300	12	1.0	1706	CQ N5JZH E	
141300	-6	-0.2	2021	CQ N8DOD E	
141300	7	0.1	2490	JH1FNS W9X	
141300	-6	0.2	1597	K0RKS K4SHQ EM64	

Log QSO Stop Monitor Erase Decode Enable Tx Halt Tx Tune  Menus

40m 7.074 000  
 DX Call: N2XK, DX Grid: FN20  
 Az: 69, 1770 mi  
 Lookup Add

2017 Dec 24 14:13:26

Calling CQ: CQ, Answering CQ: Grid  
 dB: R+dB, RRR: 73  
 CQ KC5RUO DM65 (Gen msg)  
 TU FM NM 73 (Free msg)

Receiving FT8 11/15 WD:20m

