

## Take Your Own Trail Walk: Minuteman Bikeway Extension, by Clem Larson, Bedford Trails Committee

The **Minuteman Bikeway Extension** (MBE), which becomes the Reformatory Branch Trail in Concord, follows the abandoned Boston & Maine railroad bed from Depot Park to Concord, MA. Most of the MBE is part of the Bay Circuit Trail. On the way to Concord, you can take a scenic and peaceful detour through the **Great Meadows National Wildlife Refuge**. Along the way you may observe a variety of wildlife and a wide range of vegetation types. This dirt trail goes 5 mi. past Great Meadows National Wildlife Refuge, North Bridge and the Concord Battlefield to Lowell Rd. in Concord. The Bedford portion of the MBE is scheduled to be paved in 2023.

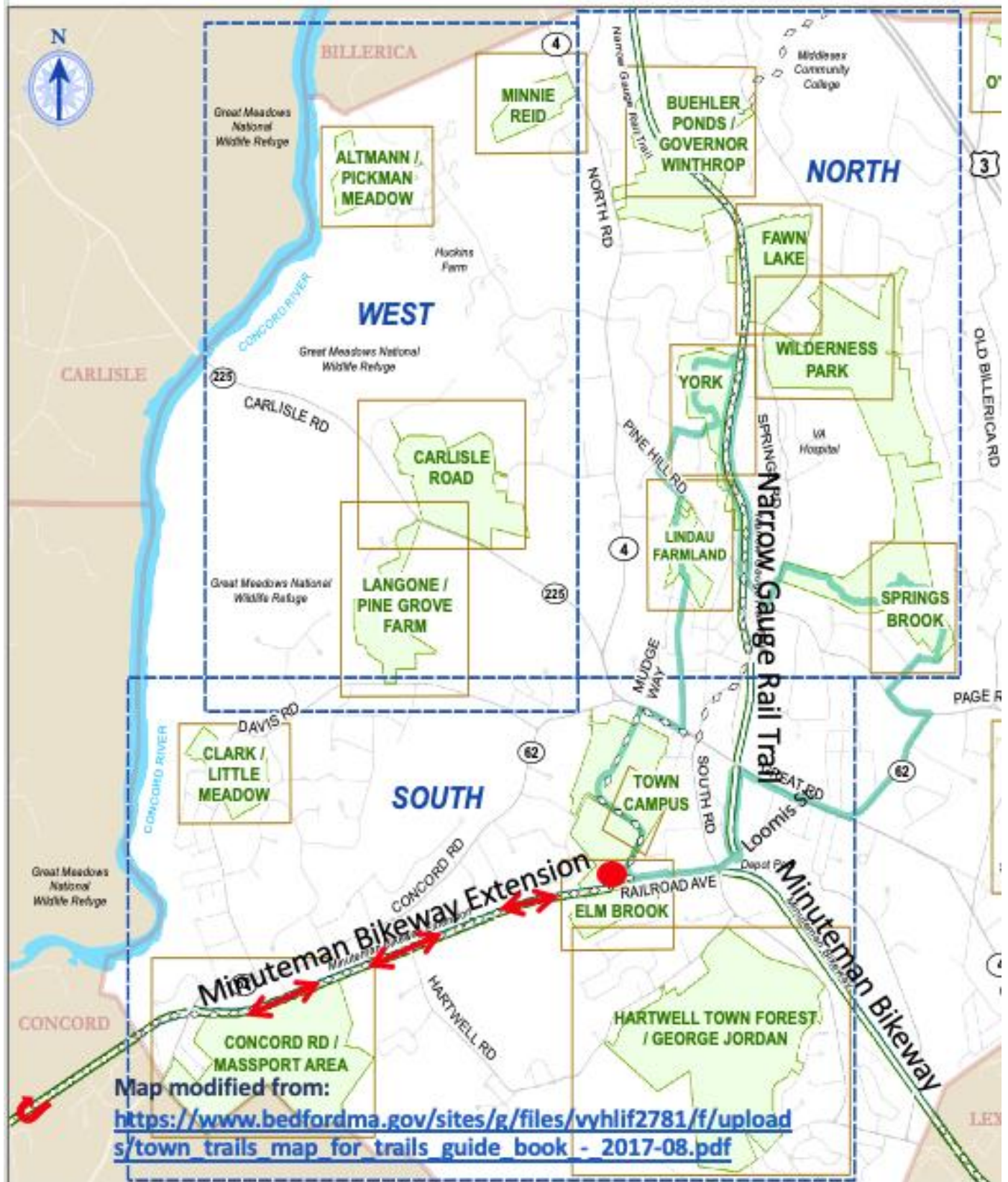


**Difficulty Level:** **Low-Moderate**: The dirt trail is flat, mostly dry terrain with some rocks, man holes, and tree roots. The full walk is about 5 miles each way and takes about 3.5h.

**Driving Directions:** From the Bedford Pubic Library at 7 Mudge Way, turn right on The Great Road (Routes 4/225/62) and continue 0.2 miles. Turn right on South Road and continue 0.4 miles. Turn right on Railroad Av. The parking area will be 0.3 miles on the left, at the sharp bend, just south of John Glenn Middle School.

**Parking:** Please park at the parking area on Railroad Av. (*near Google Maps address 25 Railroad Av., Bedford*)

**Walking Directions:** (*see map*) This trail walk is basically just an “out-and-back.” From the Railroad Av. parking area, follow the map directions.



**Note:** Note that all walks are at your own risk. Depending on the time of the year, ticks may be out, and poison ivy may be active. Please wear comfortable, closed-toe walking shoes or boots that can handle wet or mud, and ice and snow in the winter. Children and dogs on leash are welcome.

**Click Here for:** [Prior “Take Your Own” Trail Walks](#)

**To Join:** Go to the [Bedford Trails page](#)

If you already have a Google account, click “Join Group to Post”

If you don't have a Google account, please send an email to BedfordMA.trailwalks@gmail.com and you'll be added to the Group.

*Bedford MA Trails is on **Facebook**, just click here*

