

Take-Your-Own Trail Walk: Burlington Mill Pond, by Mark Levine, Bedford Trails Committee

This walk circumnavigates the large reservoir at Burlington Mill Pond (*see picture below*). There are a number of unblazed very hilly connecting trails to the north worth exploring too.

“The **Mill Pond Conservation Area** is our [Burlington’s] largest and most visited property. The 140 acre property surrounds the Mill Pond Reservoir and offers beautiful views of the landscape. The property contains numerous trails that wander through dry woodlands and near healthy wetlands and vernal pools. Visitors can park at the Water Treatment Plant on Winter Street or at the access point off of Town Line Road. . . [from Burlington website] . . . Bird sightings around Mill Pond can be read here: <https://ebird.org/ebird/hotspot/L3081341>.”

Difficulty Level: Moderate: due to hills, tree roots, and uneven terrain around the reservoir. The trail is approximately 2 miles long, and takes about an hour to walk.

Driving Directions: From the Bedford Library at 7 Mudge Way, turn right on The Great Road (Routes 4/225/62), and after 0.8 miles turn left on Rt. 62. Follow Rt. 62 for 3.1 miles past Rt. 3 into Burlington, where the road becomes Bedford St. Follow Bedford St. for 1.5 miles past the Burlington Town Common, where the road becomes Center St. Follow Center St. for 0.6 mile, and make a slight right onto Winn St. Take the first left onto Peach Orchard Rd. After 0.6 miles turn left onto Wellesley Av., and continue 0.2 mi. to the small Reservoir Trail parking area.

Parking: Please park at the Reservoir Trail parking area (Google address 99 Wellesley Av., Burlington) (*see map*).

Walking Directions: (*see map*) From the Reservoir Trail parking area, follow the access trail until you reach the main loop trail, and follow the loop trail around the reservoir.





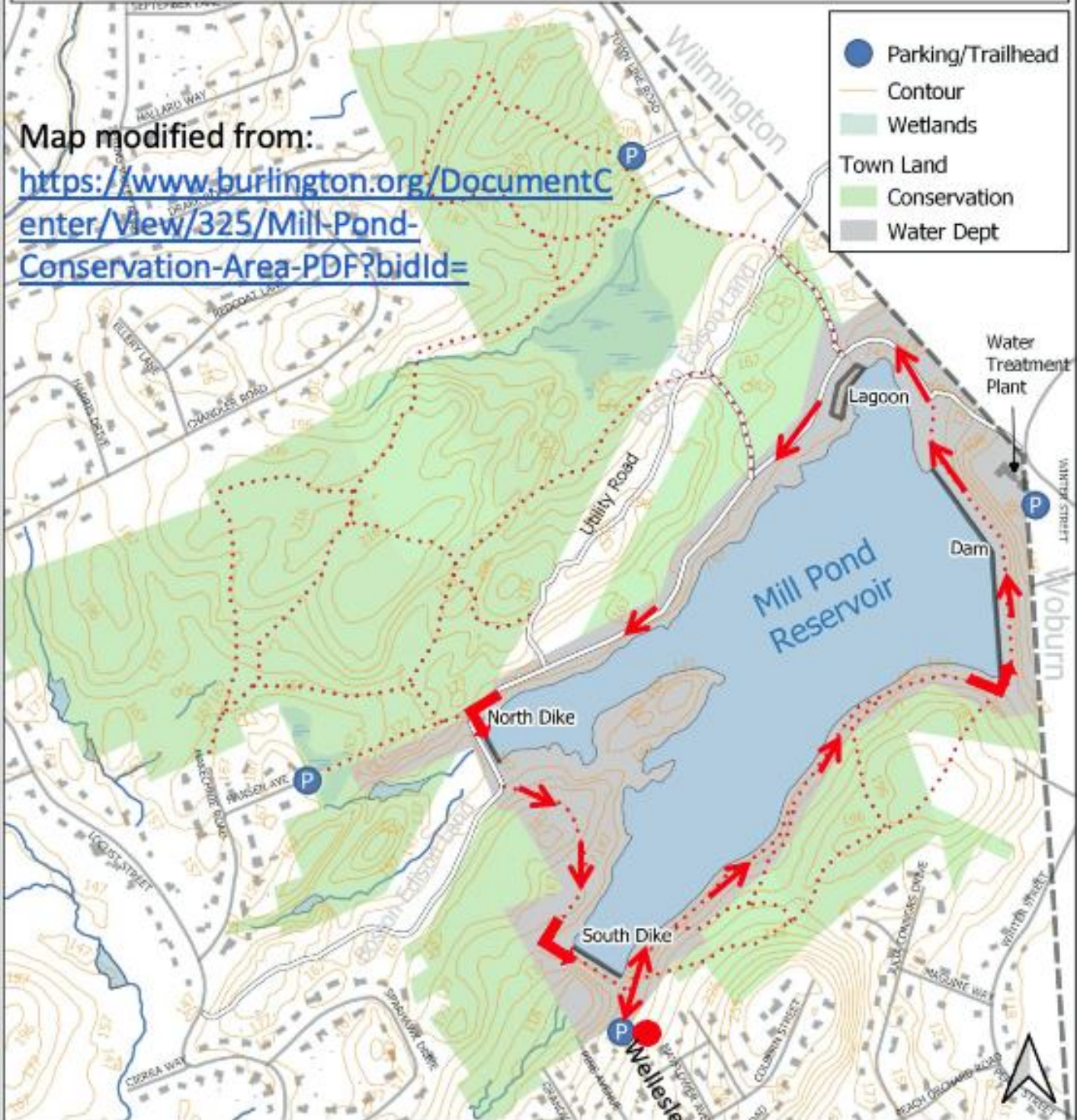
Mill Pond Conservation Area

TOWN OF BURLINGTON
29 CENTER STREET
BURLINGTON, MASSACHUSETTS 01803

Burlington Conservation Department
781-270-1655
conservation@burlington.org

Map modified from:
<https://www.burlington.org/DocumentCenter/View/325/Mill-Pond-Conservation-Area-PDF?bidl=>

- Parking/Trailhead
- Contour
- Wetlands
- Town Land
- Conservation
- Water Dept



Disclaimer:
This map, and the information herein is intended to be a reasonably accurate representation, but is not guaranteed. The Town of Burlington shall not be held responsible for the accuracy or misuse of this data.

Note: Note that all walks are at your own risk. Depending on the time of the year, ticks may be out, and poison ivy may be active. Please wear comfortable, closed-toe walking shoes or boots that can handle wet or mud, and ice and snow in the winter. Children and dogs on leash are welcome.

Please follow the latest [Bedford COVID-19 Data, News and Announcements](#)

Please observe [Massachusetts "Governor's COVID-19 Order . . . requiring all persons to wear face-coverings in all public places, even where they are able to maintain 6 feet of distance from others"](#)

Click Here for: [Prior "Take Your Own" Trail Walks](#)

To Join: Go to the [Bedford Trails page](#)

If you already have a Google account, click "Join Group to Post"

If you don't have a Google account, please send an email to BedfordMA.trailwalks@gmail.com and you'll be added to the Group.

*Bedford MA Trails is on **Facebook**, just click here*

