

**Eastern Star/Santos Narrabri Coal Seam Gas Exploration Project, Dewhurst sites.**

**Pictures taken 1<sup>st</sup> January, 2010 after seasonal rains (a 'normal' rain event).**

**Picture 1. Environmental damage caused by poor construction of gas exploration drilling ponds after rain at site Dewhurst 17.**

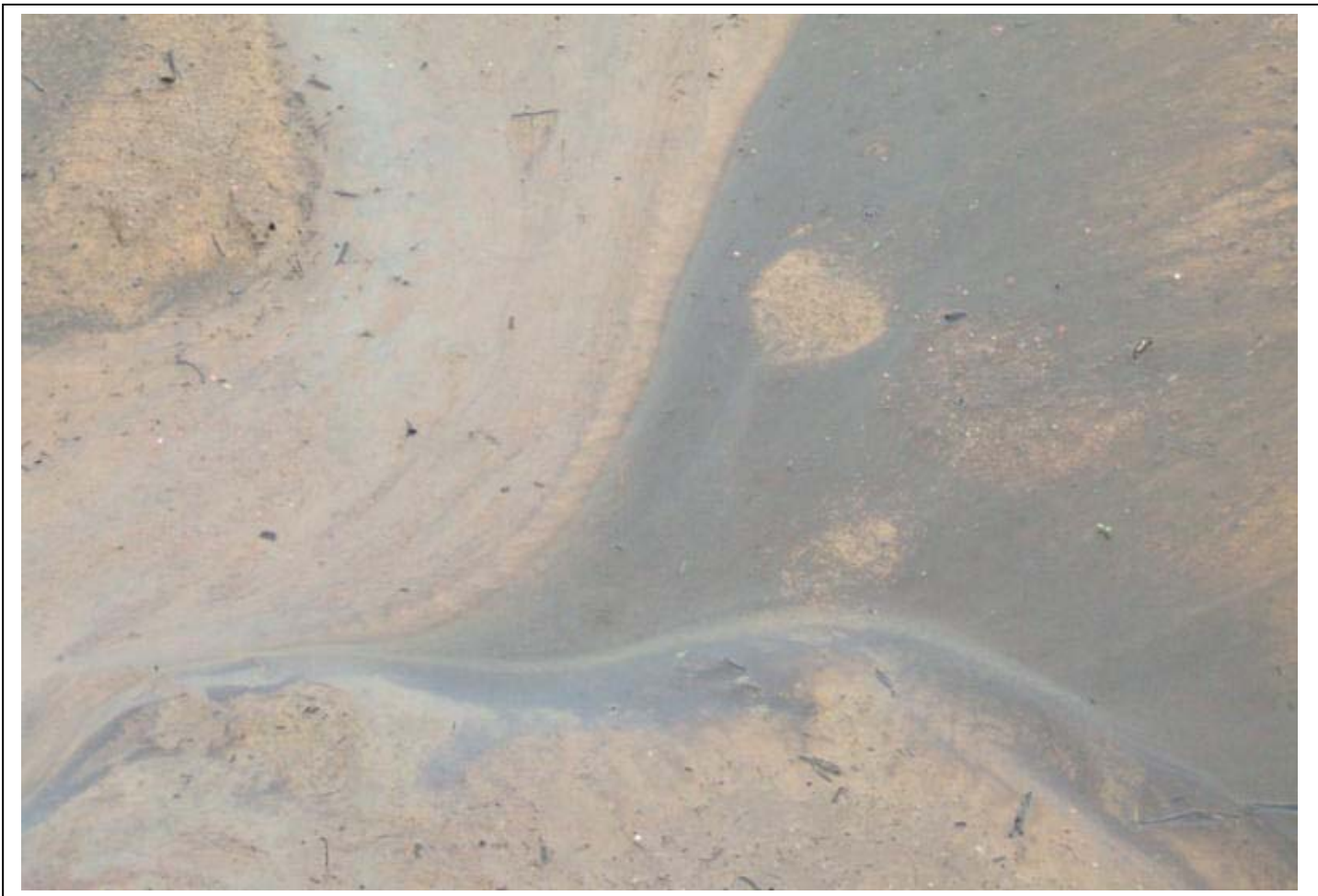
**Note contaminated water overflowing from the sump pond.**



**Picture 2. Site Dewhurst 16H. Sump pond overflowing. Note also the waste from the well head also contaminating and leaking over the site and ultimately into the East Pilliga State Forest.**



**Picture 3. Site Dewhurst 17. Unknown material escaping from pit including waste drilling fluids and tailings from the bore hole.**



**Picture 4. Site Dewhurst 16H. Contaminated water escaping into the East Pilliga State Forest. This water linked up with water from the overflow at Dewhurst 17H. Water from here runs into Jacks Creek and ultimately into the Namoi Catchment which feeds into the Murray-Darling Basin.**

**Note also that this site is unfenced – only steel posts with one very low wire was put around this site to protect native animals – inappropriate containment for what is really an industrial site.**



**Picture 5. Site Dewhurst 17H. Accumulated water from pits overflowing into the East Pilliga State Forest.**



**Picture 6. Contaminated water from both Dewhurst 16H and 17H sites flowing down to Jacks Creek and thence into the Namoi Catchment and into the Murray Darling Basin.**

