

Public Meeting #2

# MASTER PLAN FOR SMITH FIELD PLAYGROUND

ALLSTON, MA



Monday September 21<sup>st</sup>, 2015 @ 6:30-8:00 pm  
Charlesview Community Room, 123 Antwerp Street

# Agenda

- 1.** Welcoming Remarks
- 2.** Master Plan Overview and Project Process
- 3.** City Goals and Objectives
- 4.** Meeting# 1 Recap
- 5.** Facility Usage Summary
- 6.** Concept Alternatives
- 7.** Listening Session/Discussion
- 8.** Next Meeting-Late Fall 2015

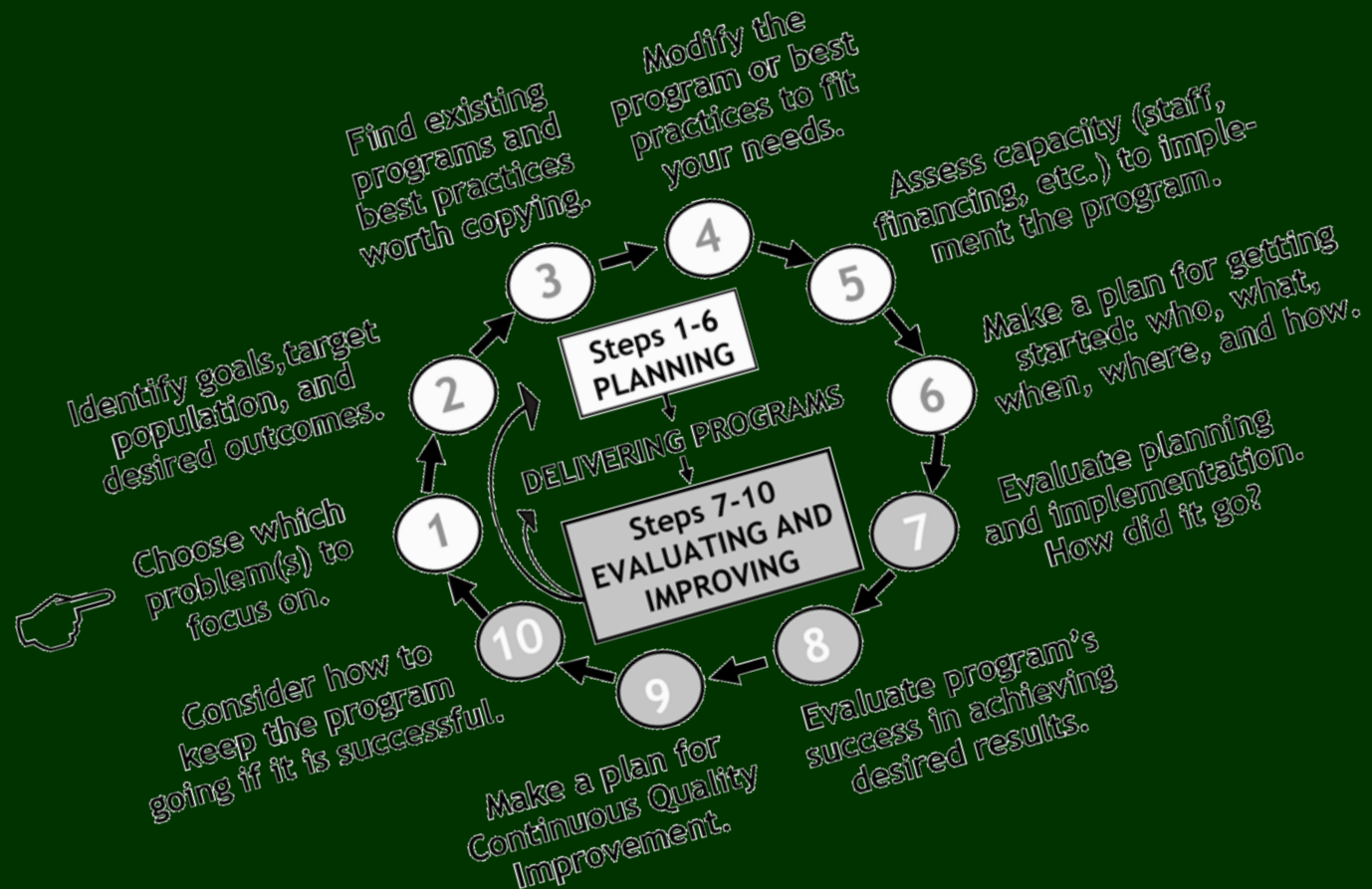
# 1. Welcoming Remarks

## WELCOME TO ALL!

- Proponent is Boston Parks and Recreation Dept.
- This is the second of a series of stakeholder meetings
- Goal is to develop a master plan for Smith Field Playground



# 2. Master Plan Overview & Project Process



## WHAT IS A MASTER PLAN?

- Preserves and protects
- Re-assesses what a park offers / lacks
- Directs change
- Allows a wholistic design approach
- Establishes a vision
- Guides capital dollars
- Sets 10-15 yr. course



## WHY NOW?

- Area undergoing significant growth and change
- Community has advocated for a master plan
- Opportunity to preserve and enhance



# 3. City Goals & Objectives



## CITY-WIDE PARK GOALS

- Preserve and protect existing trees
- Expand usable park area
- Improve universal access
- Enhance park visibility
- Increase park access
- Preserve and enhance existing active recreation spaces
- Serve park users of all ages



# 4. Meeting#1 Recap

## MEETING RECAP

- First meeting held on 6/23/2015 at the Harvard Ed Portal.
- Approx. 40+ people attended.
- Topics discussed included
  - Project Context
  - Allston Initiatives
  - Existing Conditions



## PROJECT LOCUS

### Smith Field

- Located in the NW quadrant of North Allston
- Entry off Western Ave. and Soldiers Field Rd.



# 5. Facility Usage Summary

# PERMIT HOLDERS

## ■ Email Blast to Permit Holders

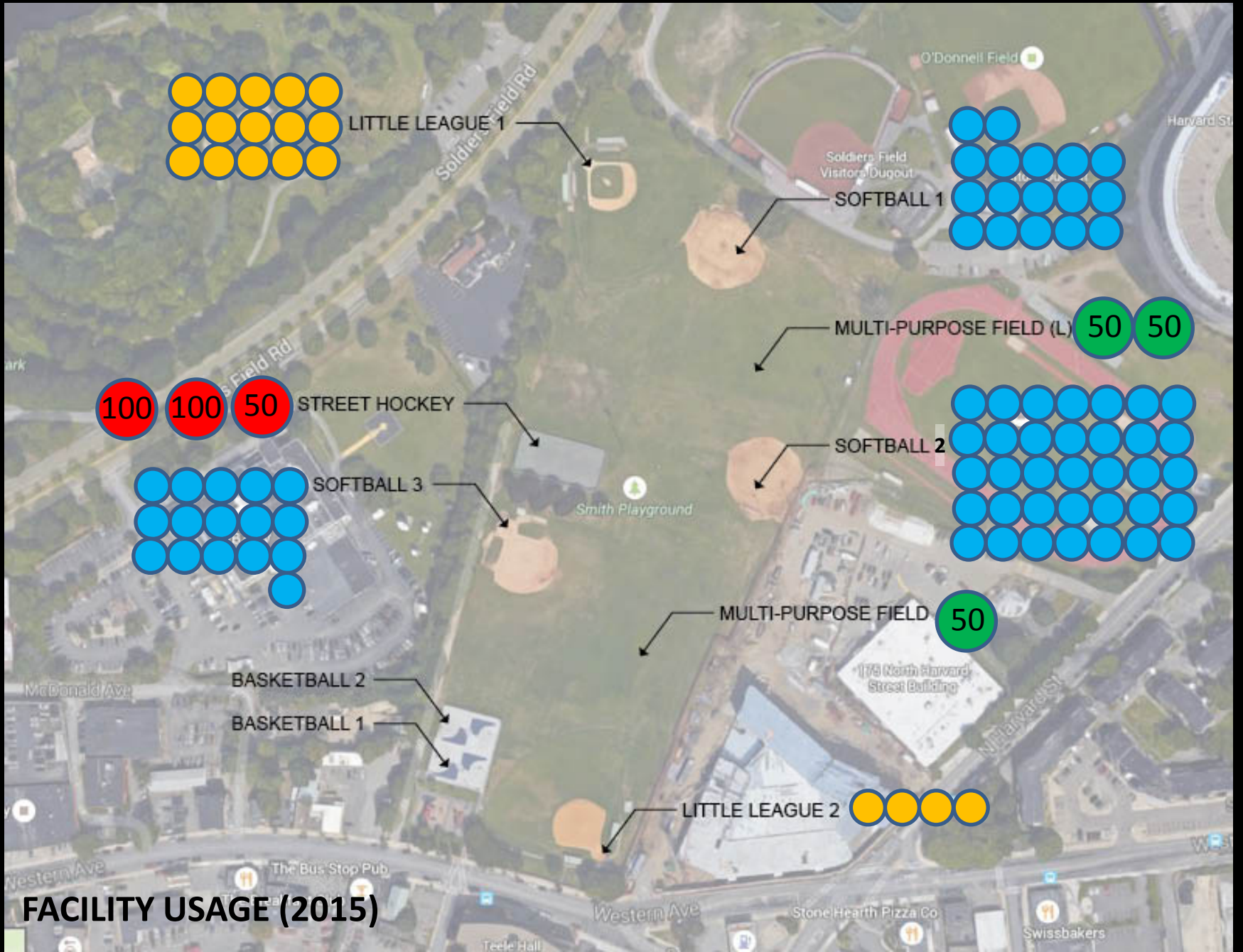
We are working on the development of a Master Plan for improvements to Smith Playground in Allston. To achieve the most successful representation of Smith Playground, our accuracy in studying facility usage within the park is crucial. We have been provided a list of recent permit holders for facility usage and we have a few simple questions for you concerning the hours you reserved at the park in the past to help guide our design. The following questions below have been generated to help understand where and when the most activity within Smith Playground occurs throughout the year.

1. Which league, group, or club do you represent?
2. Are you the official permit holder for booked facility time at Smith Playground?
3. Attached is an aerial photograph of Smith Playground. Referring to the labels on the image, which facilities do the majority of your booked times relate to?
4. Throughout your season or leagues, how many hours or games do you spend within these facilities? Providing us with current or past league schedules will also help our design.
5. As a common user of Smith Playground, are there any general design concerns that you may have about the future of the park?
6. Are there any additional program elements you would like to see as a common park user?

Thank you for your time and please do not hesitate to contact me at the phone number below for any questions you may have.







**FACILITY USAGE (2015)**



# 6. Concept Alternatives

## BASELINE IMPROVEMENTS

- Incorporate accessible internal pedestrian circulation network.
- Increase park visibility and provide external links to community.
- Preserve active recreational uses and add additional as feasible (i.e. tennis).
- Incorporate active/passive community gathering spaces.
- Upgrade lighting
- Enhance and define spatial use w/ trees



# EXISTING PARK



Basketball Court  
2-5 & 5-12 Yr Old  
Playground  
Little League

Hockey Court  
Softball  
Multi-Purpose  
Fields

# **E**XISTING PARK

## **PROS**

- Known entity to users.
- Maximizes ball fields with 5 total
- Provides for little league and softball.
- Includes playground, 2 basketball, and hockey court.

## **CONS**

- Very disorganized layout
- Location of multiuse fields means use is either/or (i.e. no dedicated sports turf)
- Playground squeezed between basketball court and street noise.
- Playground subject to fly balls from ball field.

# ALTERNATIVE # 1



Softball

Hockey Court

Multi-Purpose Fields

Concept 1



Basketball Courts  
2-5 Yr Old Playground  
Open Space / Community Activities  
Little League  
5-12 Yr Old Playground

N. Harvard Street

Western Ave

Soldiers Field Road

# ALTERNATIVE # 1

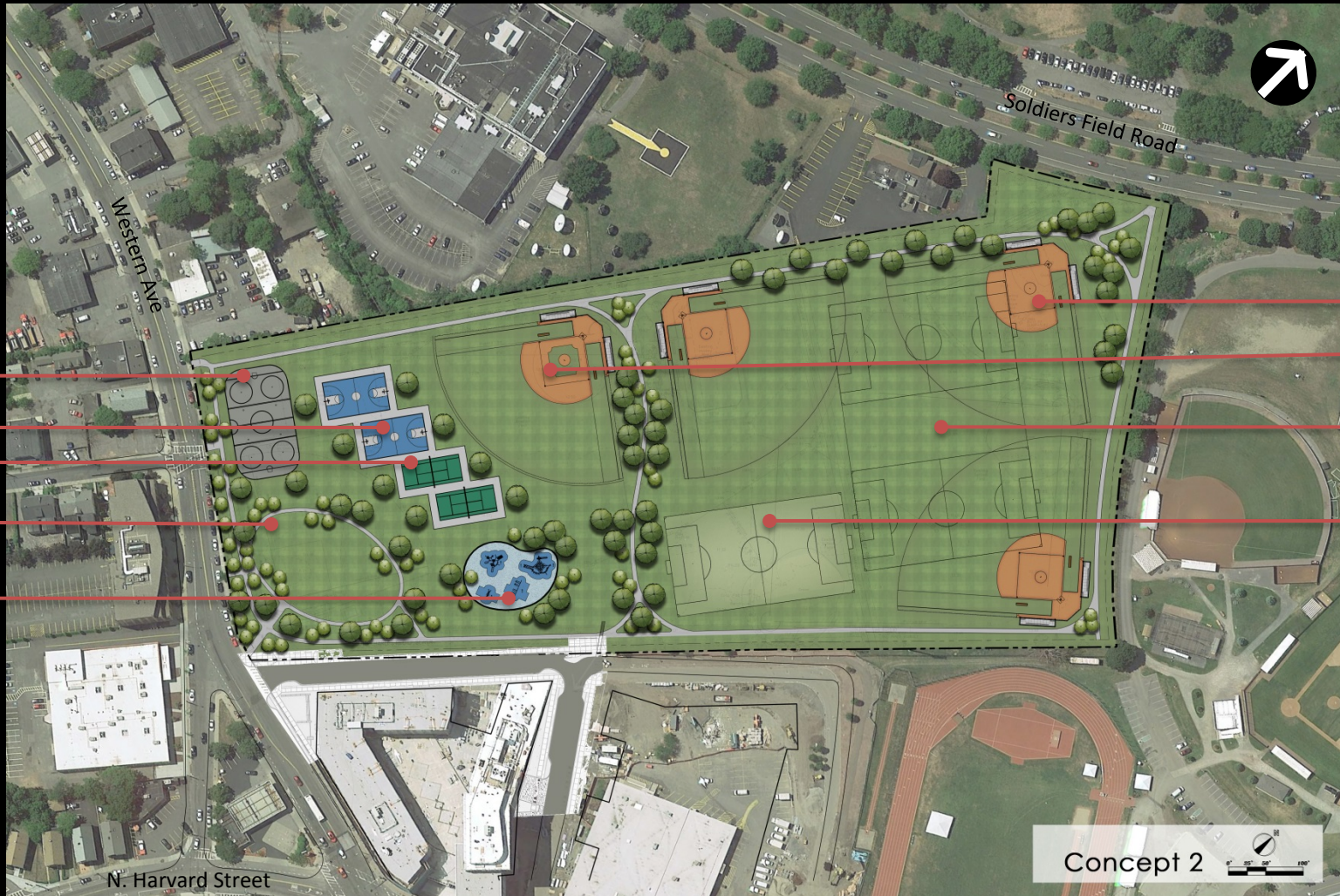
## PROS

- Provides 4 softball fields and 1 little league field.
- Adds second hockey court
- Enlarges and separates younger and older play areas.
- Greater sense of spatial organization.
- Retains 2 basketball courts.

## CONS

- Location of multiuse fields means use is either/or (i.e. no dedicated sports turf).
- Solar orientation of one ball field not ideal.

# ALTERNATIVE #2



- Hockey Court
- Basketball Courts
- Tennis Courts
- Open Space / Community Activities
- 2-12 Yr Old Playground

- Softball
- Little League
- Multi-Purpose Field
- Dedicated Turf Field

Concept 2

# ALTERNATIVE #2

## PROS

- Includes 3 softball fields and 1 little league field.
- Maintains multi-use turf fields.
- Relocates hockey court
- Relocates playground away from basketball and street noise.
- Improved spatial organization.
- Retains 2 basketball courts and adds 2 tennis courts.

## CONS

- Solar orientation of one ball field not ideal.
- Location of multiuse fields means use is either/or (i.e. no dedicated sports turf).



# ALTERNATIVE #3



- Basketball Courts
- 2-12 Yr Old Playground
- Open Space / Community Activities
- Little League

- Dedicated Turf Field
- Hockey Court
- Softball

Concept 3

# ALTERNATIVE #3

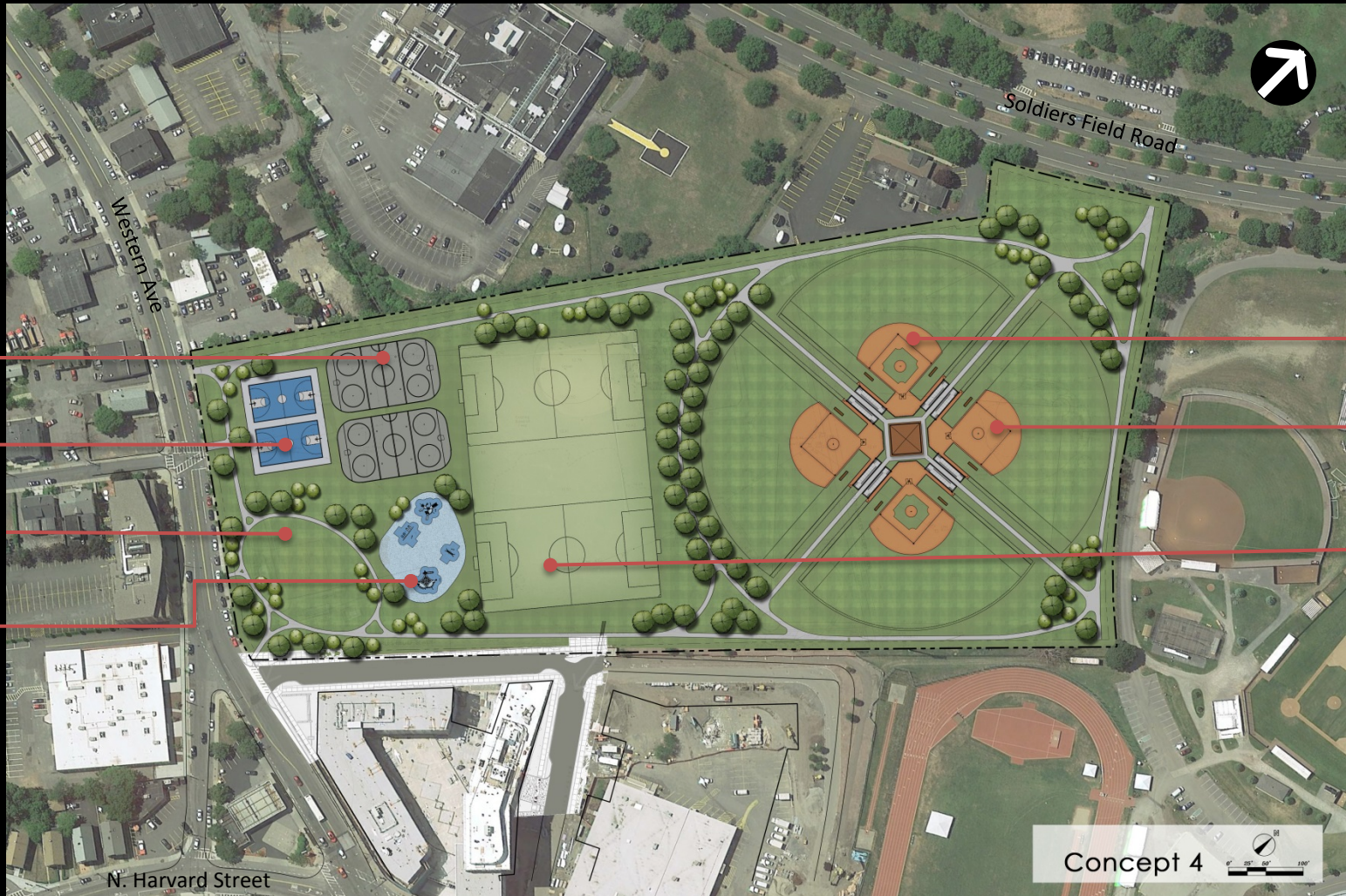
## PROS

- Includes 2 little league and 2 softball fields.
- Provides 1 dedicated 8 v. 8 field and 1 dedicated multi-use turf field.
- Provides 1 hockey court
- Enlarges playground area.
- Improved spatial organization.
- Retains 2 basketball courts.

## CONS

- Solar orientation of two ball fields not ideal.
- No baseball.
- Playground remains near street noise.

# ALTERNATIVE #4



Hockey Court  
Basketball Courts

Open Space /  
Community  
Activities  
2-12 Yr Old  
Playground

Little  
League

Softball

Dedicated  
Turf Field

Concept 4



# ALTERNATIVE #4

## PROS

- Includes 2 little league and 2 softball fields.
- Adds dedicated turf field.
- Adds second hockey court.
- Relocates playground away from street and basketball.
- Greater sense of spatial organization.
- Retains 2 basketball courts.
- Consolidated layout improves lighting and amenities.

## CONS

- Solar orientation of fields not ideal.

# **7. Listening Session / Discussion**

## THOUGHTS, IDEAS....

- How much passive recreation would you like to see?
- What type and mix of active recreation?



# **8. Next Meeting – Late Fall 2015**