

Facing Problem?

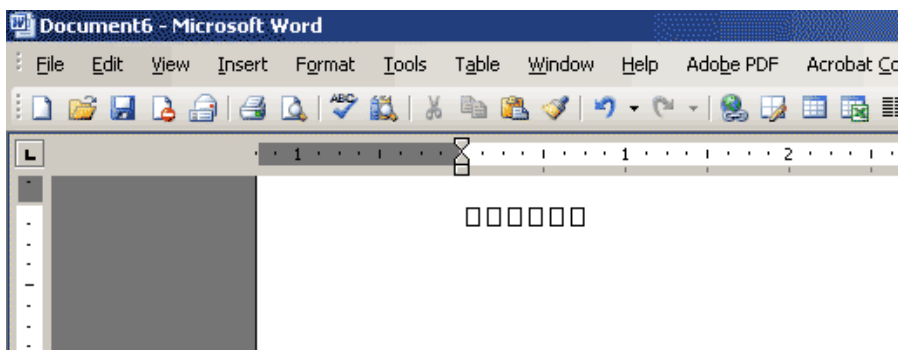
If you are facing any problem, please checkout this page to look for the solution. If you can't find any solution, let me know your problem by visiting my Website (<http://www.vishalon.net>) and then filling out contact form.

Questions

1. In Microsoft Word, I can see squares and/or uneven spacing between two letters
2. In Notepad, I can see squares
3. PramukhIME is working fine in Microsoft Word, Notepad etc but does not work in some application

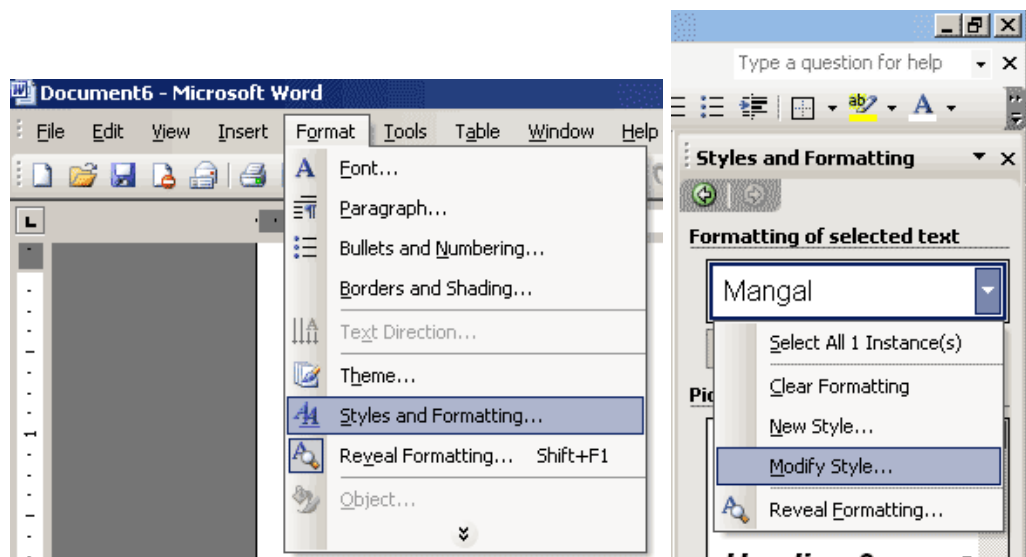
Solution

1. **In Microsoft Word, I can see squares and/or uneven spacing between two letters:** You may face the problem shown in the image below.



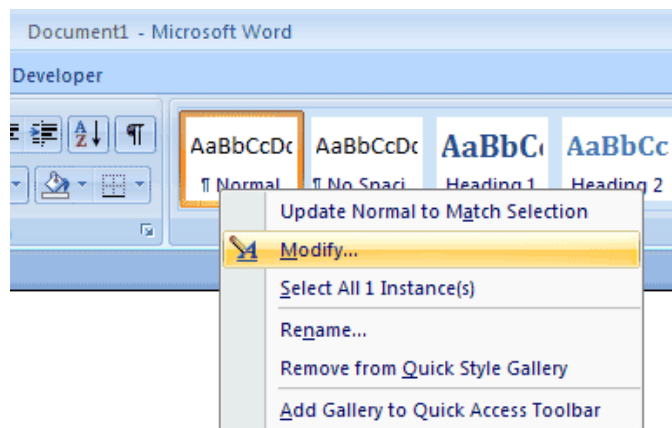
To resolve this problem, select the square text and go to Format Menu > click "Styles and Formatting...". It will open up pane on right hand side as shown in the image

For Word 2000,
2003 ->

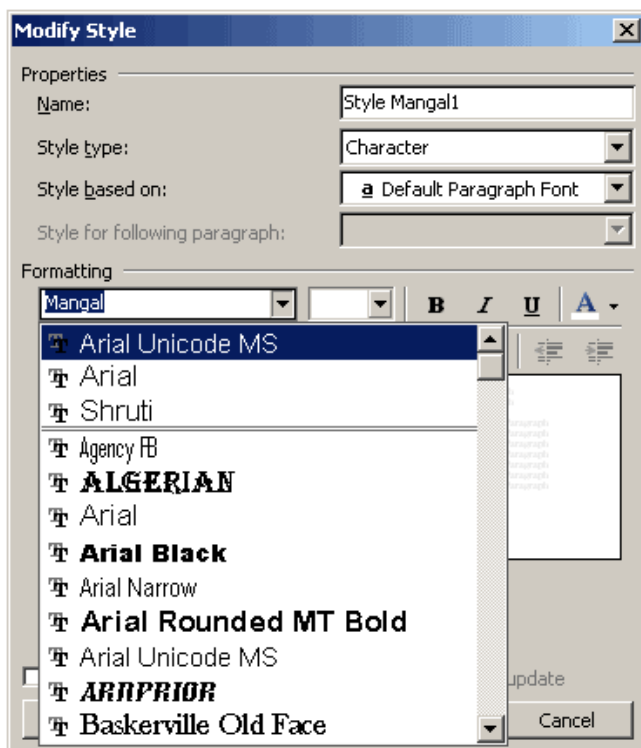


Right click on selected style to get following options.

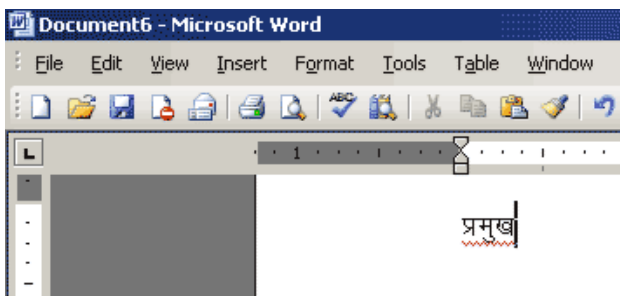
For Word 2007 -
>



Depending on your computer and selected script, selected style can be other than "Mangal". Click on drop down arrow on "Mangal" from pane, click on "Modify Style...". It will open "Modify Style" dialog as shown below.



Select "Arial Unicode MS" for formatting as shown in the image above. Click OK and you will see proper text as shown in the image below.

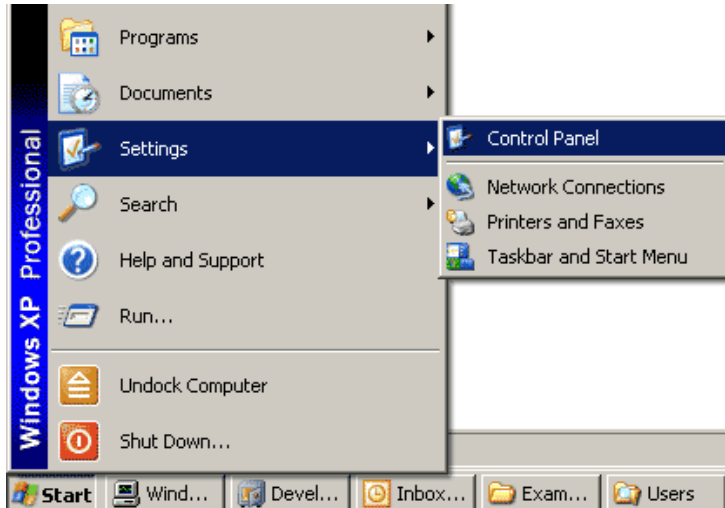


If "Arial Unicode MS" is not in the list, probably you don't have International support enabled for

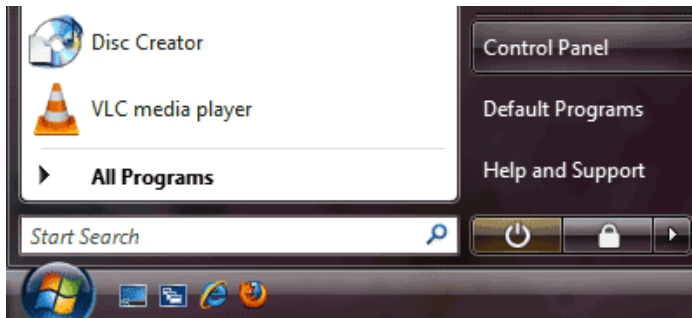
your MS Office installation. Please check your MS Office installation as follows.

Go to Start > Control Panel

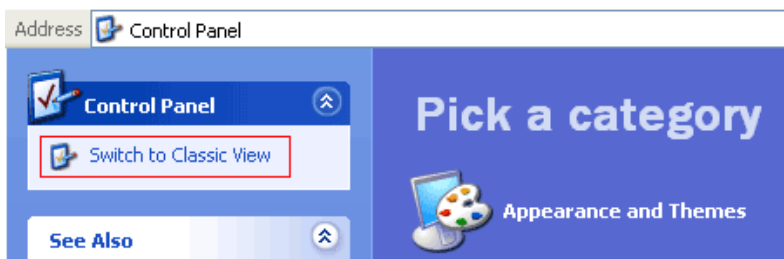
For Windows
2000, XP ->



For Windows
Vista, Windows 7
->

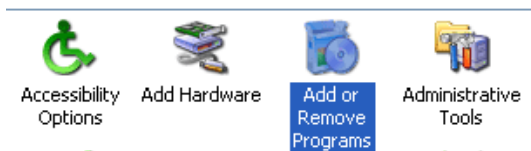


If you have Category View, make sure you change it to Classic View by clicking on the link "Switch to Classic View"

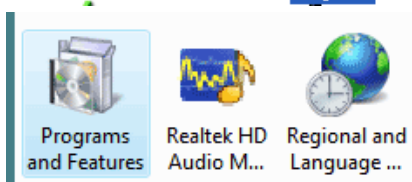


Now open "Add or Remove Programs". For Windows Vista and Windows 7, look for "Programs and Features"

For Windows
2000, XP ->

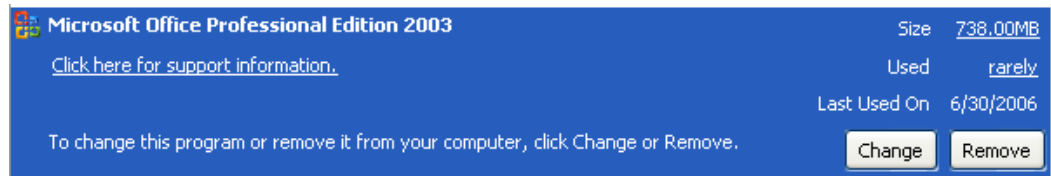


For Windows
Vista, Windows 7
->

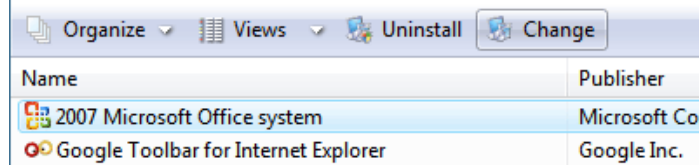


Now look for "Microsoft Office" program name in the list. The actual name of the program may slightly differ depending on versions.

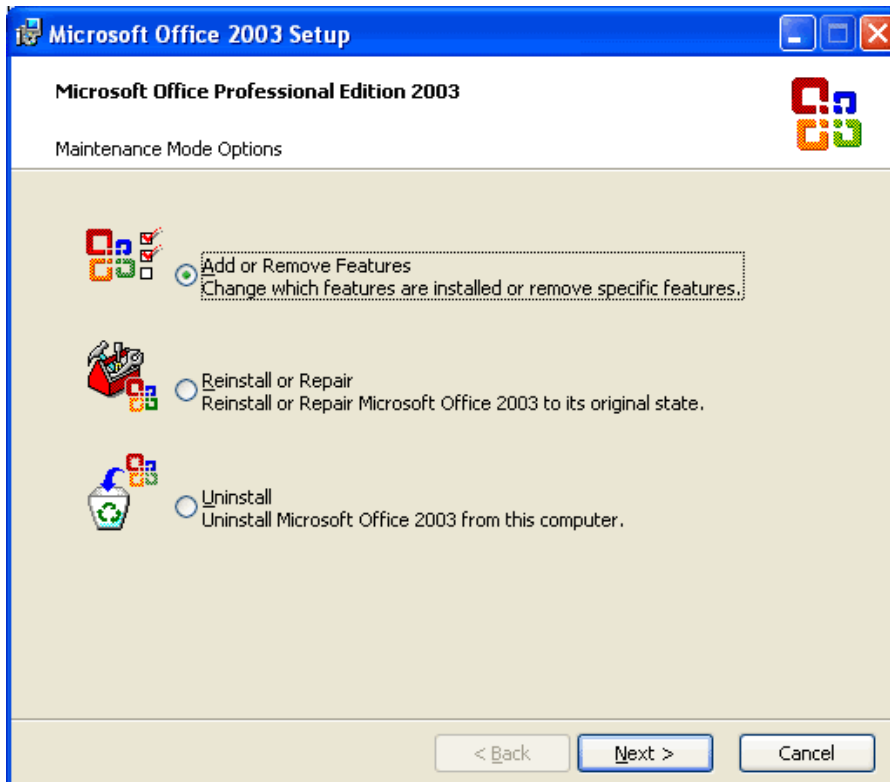
For Windows
2000, XP ->



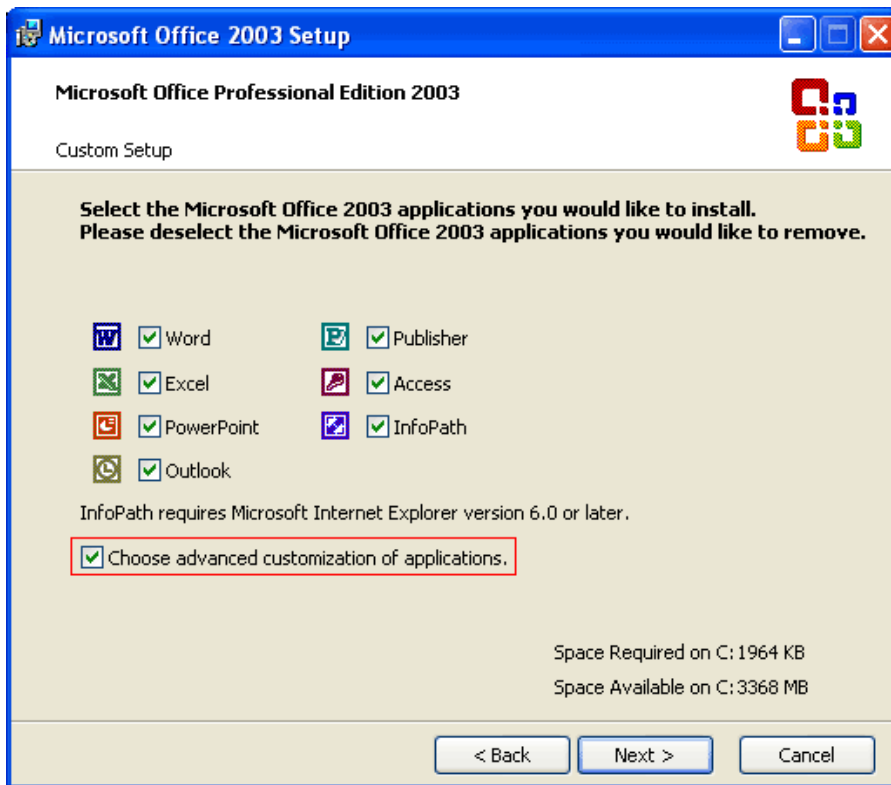
For Windows
Vista, Windows
7 ->



Click on "Change" button. It will open up MS Office setup wizard.
Select "Add or Remove Features" and click Next button.

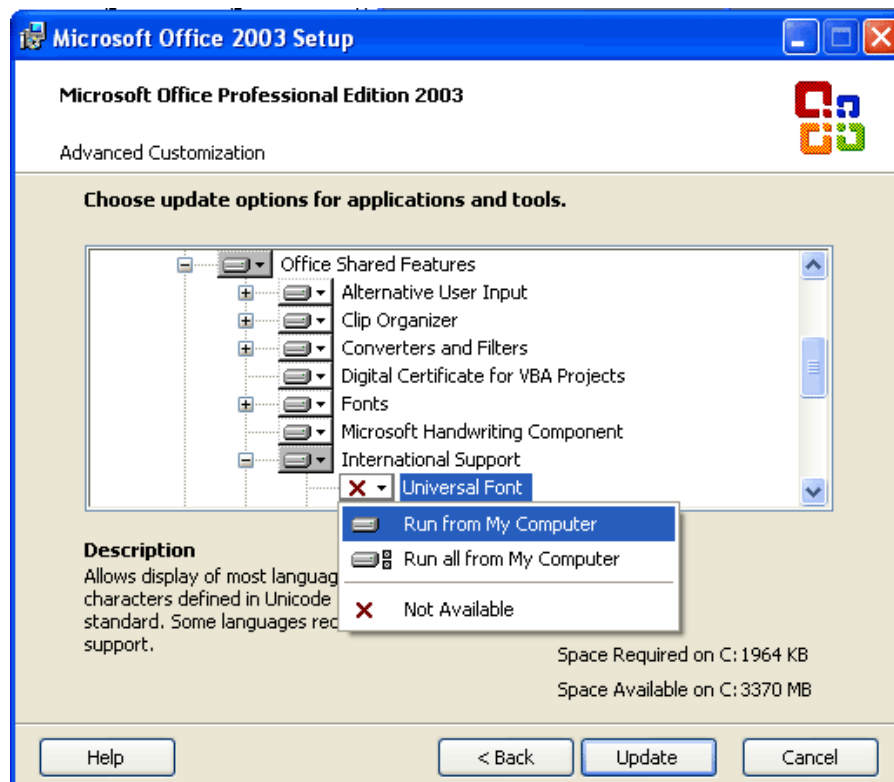


It will show list of all MS Office programs installed on the computer. Please mark "Choose advanced customization of applications". Depending on your Microsoft Office version, you may or may not get following screen. If you get this screen, follow the instruction otherwise move to next screen.

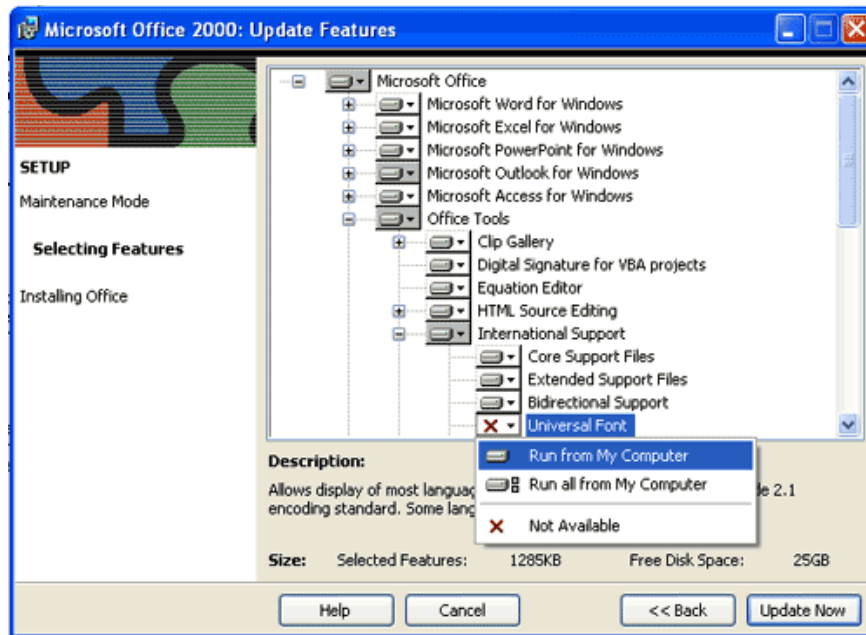


Here you will see a list of all components installed for MS Office. Navigate to "Office Shared Features" > "International Support" > "Universal Font". For MS Office 2000, navigate to "Office Tools" > "International Support" > "Universal Font". If you have cross mark against it, it means it is not installed. Choose "Run from My Computer" and click "Update" to install Universal Font support to your MS Office.

For Word 2003,
2007 ->



For Word 2000 -
>



It may ask your MS Office CD for installation. Once installed, you will get "Arial Unicode MS" font in your MS Word.

2. **In Notepad, I can see squares:** Make sure that you have Indian language enabled on your computer. To enable, please visit [Enable Indian Language](#).
3. **PramukhIME is working fine in Microsoft Word, Notepad etc but does not work in some application:** Some applications like Adobe Photoshop, Corel Draw etc are not supporting Unicode so you will not be able to write in Indian languages in those applications. You have to use traditional TTF font.